

V&V Reference Report

L2 ASCDS Version : 8.4.5

Observation 54260 - L2 Version 1
Chandra X-Ray Center

L2 Processing Date : Oct 11 2012

Contents

1	Front	2
2	OBI	3
2.1	OBI	3
2.1.1	Images	3
2.1.2	Bias	3
2.1.3	Parameters	4
2.1.4	Events	4
2.2	Compared Parameters	5
2.3	Star Slots	6
2.4	FID Slots	6
A	Summary	7
A.1	Status	7
A.2	Comments	7

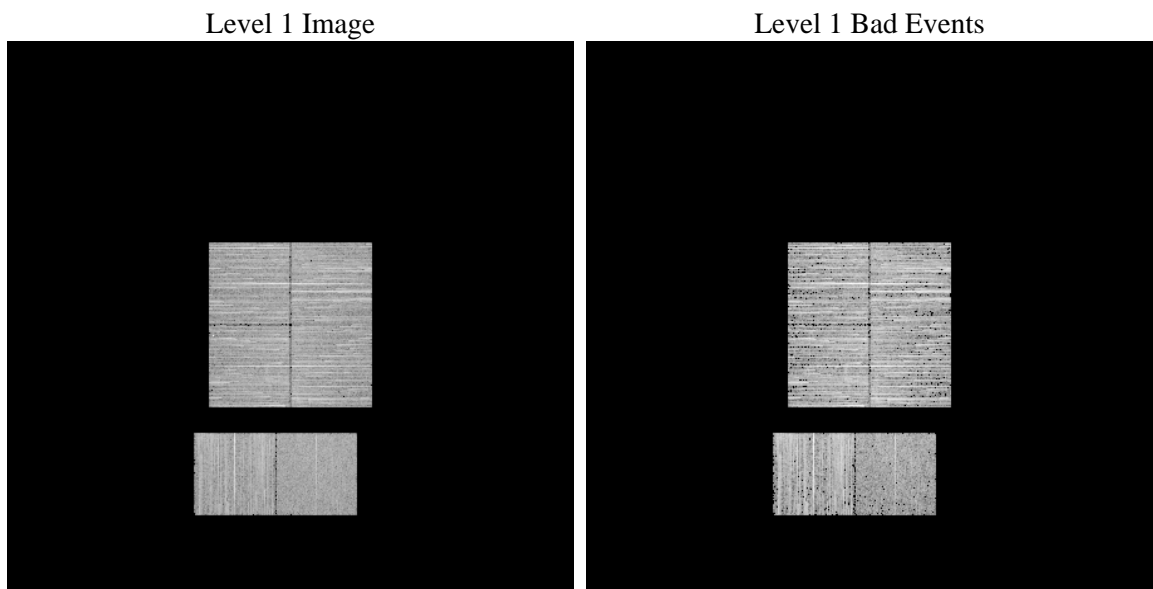
1 Front

seq_num	 	Sequence number
obs_id	54260	Observation id
title	ACIS-012367 diagnostics	Proposal title
observer	CHANDRA engineering request/realtime commanding	Principal investig
object	 	Source name
dtcycle	0	
cycle	P	events from which exps? Prim/Second/Both
ra_targ	0.0	Observer's specified target RA [deg]
dec_targ	0.0	Observer's specified target Dec [deg]
ra_nom	352.01522184202	Nominal RA [deg]
dec_nom	8.9734119600403	Nominal Dec [deg]
roll_nom	267.38037196654	Nominal Roll [deg]
revision	1	Processing version of data
ontime	3289.5999878049	Sum of GTIs [s]
livetime	3247.945092	Livetime [s]
ontime0	3289.5999878049	Sum of GTIs [s]
ontime1	3289.5999878049	Sum of GTIs [s]
ontime2	3289.5999878049	Sum of GTIs [s]
ontime3	3289.5999878049	Sum of GTIs [s]
ontime6	3289.5999878049	Sum of GTIs [s]
ontime7	3289.5999878049	Sum of GTIs [s]
l2events	125797	Number of level 2 events

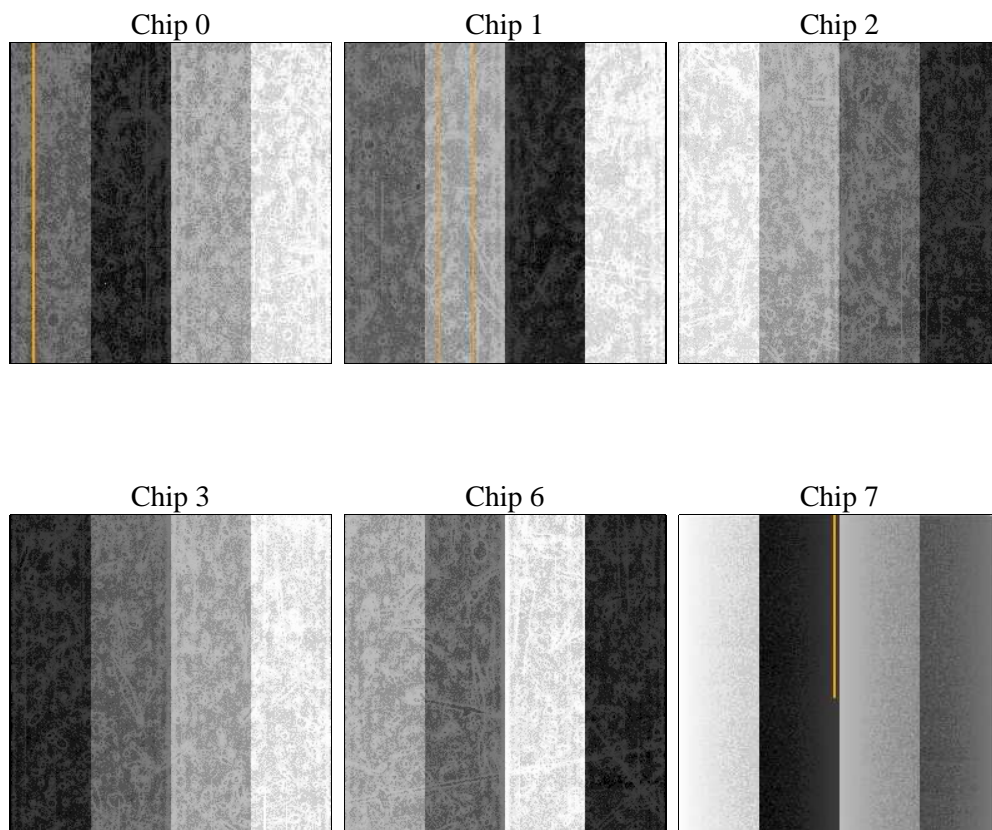
2 OBI

2.1 OBI

2.1.1 Images



2.1.2 Bias



2.1.3 Parameters

obi_num	0	Obi number	sched_exp_time	0.0	[s] Scheduled observation exposure time
ascdsver	8.4.5	Processing system revision	ontime	3289.5999878049	Sum of GTIs [s]
caldsver	4.5.2	 	ontime0	3289.5999878049	Sum of GTIs [s]
date	2012-10-11T18:35:35	Date and time of file creation	ontime1	3289.5999878049	Sum of GTIs [s]
revision	1	Processing version of data	ontime2	3289.5999878049	Sum of GTIs [s]
			ontime3	3289.5999878049	Sum of GTIs [s]
			ontime6	3289.5999878049	Sum of GTIs [s]
			ontime7	3289.5999878049	Sum of GTIs [s]
			l1events	413441	Number of level 1 events

2.1.4 Events

	ccd 0	ccd 1	ccd 2	ccd 3	ccd 6	ccd 7		ccd 0	ccd 1	ccd 2	ccd 3	ccd 6	ccd 7
level 1 events	70438	74259	70656	70754	68646	58688	grade 0 events	10259	9711	10668	10636	10401	5239
rejected events	50077	53910	50303	50072	47300	28568		14%	13%	15%	15%	15%	8%
rejected %	71%	72%	71%	70%	68%	48%	grade 1 events	45	38	70	46	49	42
								0%	0%	0%	0%	0%	0%
							grade 2 events	3934	4317	3662	3818	4124	7370
								5%	5%	5%	5%	6%	12%
							grade 3 events	1306	1256	1287	1355	1346	2481
								1%	1%	1%	1%	1%	4%
							grade 4 events	1250	1310	1347	1353	1318	2325
								1%	1%	1%	1%	1%	3%
							grade 5 events	1170	1212	1089	1300	1282	3151
								1%	1%	1%	1%	1%	5%
							grade 6 events	3638	3783	3413	3550	4180	12731
								5%	5%	4%	5%	6%	21%
							grade 7 events	48836	52632	49120	48696	45946	25349
								69%	70%	69%	68%	66%	43%

2.2 Compared Parameters

Parameter	Planned	Actual	Parameter	Planned	Actual
Instrument	ACIS	ACIS	Obspar format version number	7	7
Detector	ACIS-012367	ACIS-012367	Obspar file type	PREDICTED	ACTUAL
Grating	NONE	NONE	Obspar update status	NONE	UPDATED
Data mode	FAINT	FAINT	Number of optional ACIS chips dropped	0	0
Observation mode	SECONDARY	SECONDARY	On-chip summing requested	N	N
[deg] Pointing RA	0	352.0152218420202	Subarray requested	NONE	NONE
[deg] Pointing Dec	0	8.97341196004035	Alternating exposures requested	N	N
[deg] Pointing Roll	0.0	267.3803719665367	[s] Primary exposure time	3.2	3.2
[mm] SIM focus pos	-1.429586	-1.428180813131781			
[mm] SIM defocus	0.1037507710433287	0.1051558262725154			
[mm] SIM translation stage pos	250.455976	250.466033080201			
[mm] SIM translation stage offset	0	-0.01005468664627074			
[s] Observation start time (MET)	466309270.198209	466309269.17321			
Observation start date	2012-10-11T02:21:10	2012-10-11T02:21:09			
[s] Observation end time (MET)	466321084.348844	466321083.32384			
Observation end date	2012-10-11T05:38:04	2012-10-11T05:38:03			
Read mode	TIMED	TIMED			

2.3 Star Slots

2.4 FID Slots

A Summary

A.1 Status

V&V Scientist	Joy Nichols
V&V Date (YYYY-MM-DD)	2012.10.12
V&V Edition	1
V&V Disposition and Status	OK
V&V Charge Time	3.2895999878049

A.2 Comments