

V&V Reference Report

L2 ASCDS Version : 8.4.5

Observation 54178 - L2 Version 1
Chandra X-Ray Center

L2 Processing Date : Nov 9 2012

Contents

1	Front	2
2	OBI	3
2.1	OBI	3
2.1.1	Images	3
2.1.2	Bias	3
2.1.3	Parameters	4
2.1.4	Events	4
2.2	Compared Parameters	5
2.3	Star Slots	6
2.4	FID Slots	6
A	Summary	7
A.1	Status	7
A.2	Comments	7

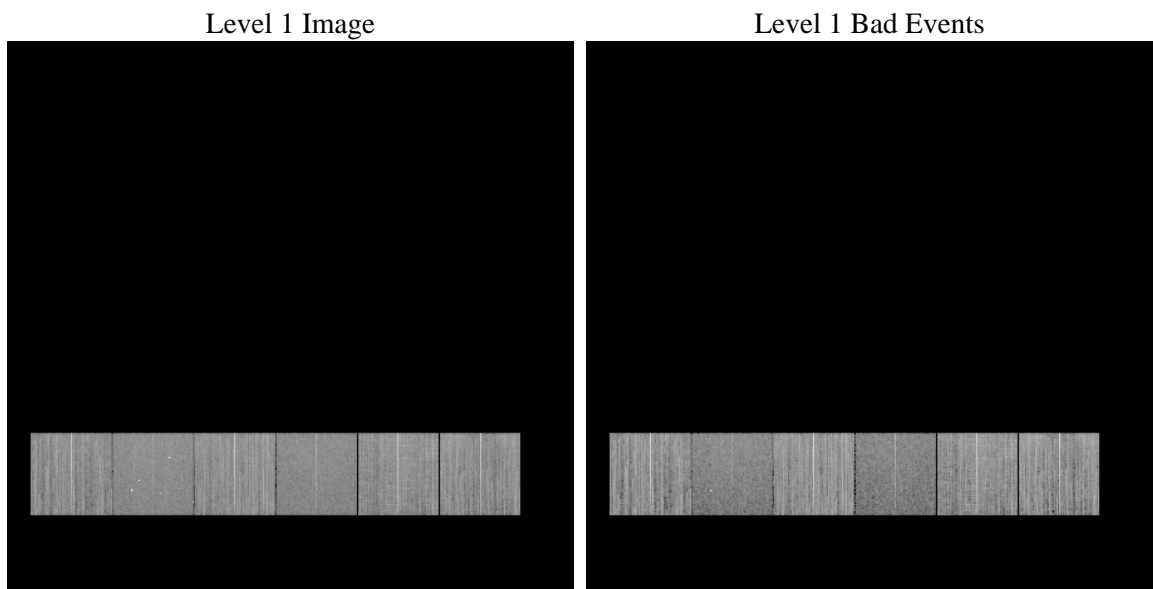
1 Front

seq_num	 	Sequence number
obs_id	54178	Observation id
title	ACIS-456789 diagnostics	Proposal title
observer	CHANDRA engineering request/realtime commanding	Principal investig
object	 	Source name
dtcycle	0	
cycle	P	events from which exps? Prim/Second/Both
ra_targ	0.0	Observer's specified target RA [deg]
dec_targ	0.0	Observer's specified target Dec [deg]
ra_nom	49.018129457634	Nominal RA [deg]
dec_nom	3.522252329747	Nominal Dec [deg]
roll_nom	17.943074493322	Nominal Roll [deg]
revision	1	Processing version of data
ontime	8281.5999692082	Sum of GTIs [s]
livetime	8176.7333638173	Livetime [s]
ontime4	8281.5999692082	Sum of GTIs [s]
ontime5	8281.5999692082	Sum of GTIs [s]
ontime6	8281.5999692082	Sum of GTIs [s]
ontime7	8281.5999692082	Sum of GTIs [s]
ontime8	8281.5999692082	Sum of GTIs [s]
ontime9	8281.5999692082	Sum of GTIs [s]
l2events	268880	Number of level 2 events

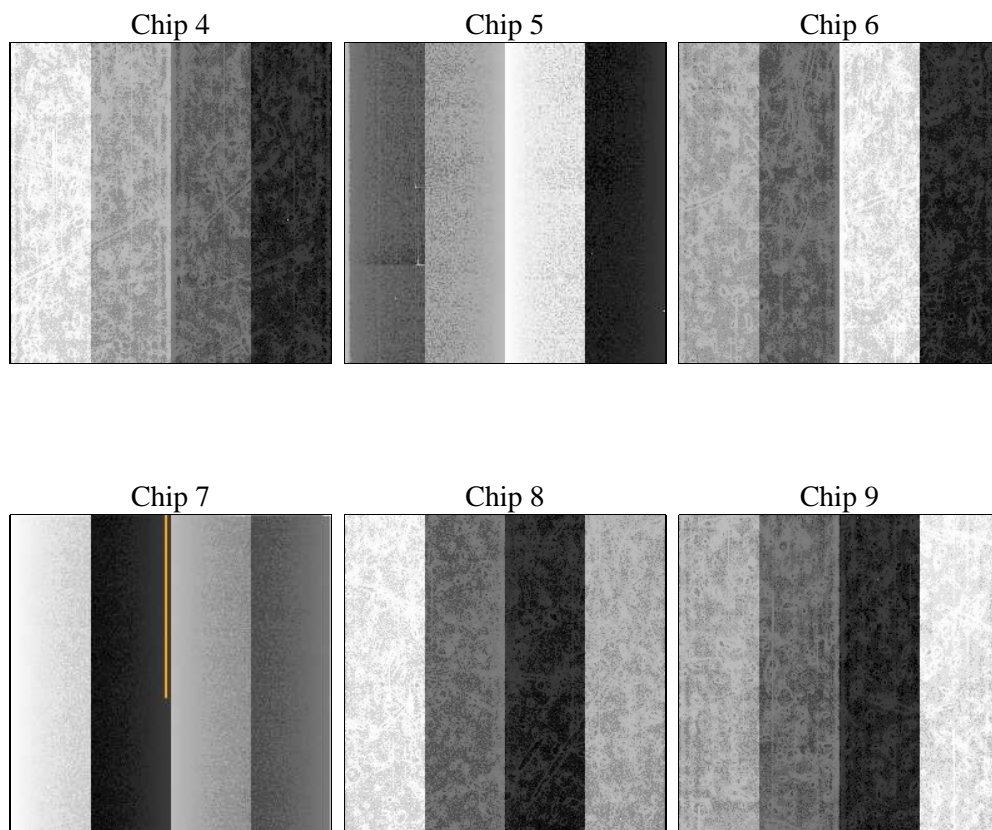
2 OBI

2.1 OBI

2.1.1 Images



2.1.2 Bias



2.1.3 Parameters

obi_num	0	Obi number	sched_exp_time	0.0	[s] Scheduled observation exposure time
ascdsver	8.4.5	Processing system revision	ontime	8281.5999692082	Sum of GTIs [s]
caldsver	4.5.2	 	ontime4	8281.5999692082	Sum of GTIs [s]
date	2012-11-09T20:20:04	Date and time of file creation	ontime5	8281.5999692082	Sum of GTIs [s]
revision	1	Processing version of data	ontime6	8281.5999692082	Sum of GTIs [s]
			ontime7	8281.5999692082	Sum of GTIs [s]
			ontime8	8281.5999692082	Sum of GTIs [s]
			ontime9	8281.5999692082	Sum of GTIs [s]
			l1events	983920	Number of level 1 events

2.1.4 Events

	ccd 4	ccd 5	ccd 6	ccd 7	ccd 8	ccd 9		ccd 4	ccd 5	ccd 6	ccd 7	ccd 8	ccd 9
level 1 events	164830	149996	183696	135637	176473	173288	grade 0 events	19878	10853	19433	9898	22319	19075
rejected events	128046	78542	144949	70218	128209	136105		12%	7%	10%	7%	12%	11%
rejected %	77%	52%	78%	51%	72%	78%	grade 1 events	142	342	94	106	109	121
								0%	0%	0%	0%	0%	0%
							grade 2 events	6882	25393	7658	15911	9739	7097
								4%	16%	4%	11%	5%	4%
							grade 3 events	2574	2834	2550	5645	3593	2482
								1%	1%	1%	4%	2%	1%
							grade 4 events	2541	2726	2549	5585	3713	2615
								1%	1%	1%	4%	2%	1%
							grade 5 events	3329	7566	3343	8151	4395	3675
								2%	5%	1%	6%	2%	2%
							grade 6 events	4909	29648	6557	28380	8900	5914
								2%	19%	3%	20%	5%	3%
							grade 7 events	124575	70634	141512	61961	123705	132309
								75%	47%	77%	45%	70%	76%

2.2 Compared Parameters

Parameter	Planned	Actual	Parameter	Planned	Actual
Instrument	ACIS	ACIS	Obspar format version number	7	7
Detector	ACIS-456789	ACIS-456789	Obspar file type	PREDICTED	ACTUAL
Grating	NONE	NONE	Obspar update status	NONE	UPDATED
Data mode	FAINT	FAINT	Number of optional ACIS chips dropped	0	0
Observation mode	SECONDARY	SECONDARY	On-chip summing requested	N	N
[deg] Pointing RA	0	49.0181294576343	Subarray requested	NONE	NONE
[deg] Pointing Dec	0	3.522252329746967	Alternating exposures requested	N	N
[deg] Pointing Roll	0.0	17.94307449332157	[s] Primary exposure time	3.2	3.2
[mm] SIM focus pos	-1.429586	-1.428180813131781			
[mm] SIM defocus	0.1037507710433287	0.1051558262725154			
[mm] SIM translation stage pos	250.455976	250.466033080201			
[mm] SIM translation stage offset	0	-0.01005468664627074			
[s] Observation start time (MET)	468818724.533031	468818723.50803			
Observation start date	2012-11-09T03:25:25	2012-11-09T03:25:23			
[s] Observation end time (MET)	468832947.433796	468832946.4088			
Observation end date	2012-11-09T07:22:27	2012-11-09T07:22:26			
Read mode	TIMED	TIMED			

2.3 Star Slots

2.4 FID Slots

A Summary

A.1 Status

V&V Scientist	Jen Lauer
V&V Date (YYYY-MM-DD)	2012.11.13
V&V Edition	1
V&V Disposition and Status	OK
V&V Charge Time	8.2815999692082

A.2 Comments