

V&V Reference Report

L2 ASCDS Version : 8.4.5

Observation 54143 - L2 Version 1
Chandra X-Ray Center

L2 Processing Date : Nov 25 2012

Contents

1	Front	2
2	OBI	3
2.1	OBI	3
2.1.1	Images	3
2.1.2	Bias	3
2.1.3	Parameters	4
2.1.4	Events	4
2.2	Compared Parameters	5
2.3	Star Slots	6
2.4	FID Slots	6
A	Summary	7
A.1	Status	7
A.2	Comments	7

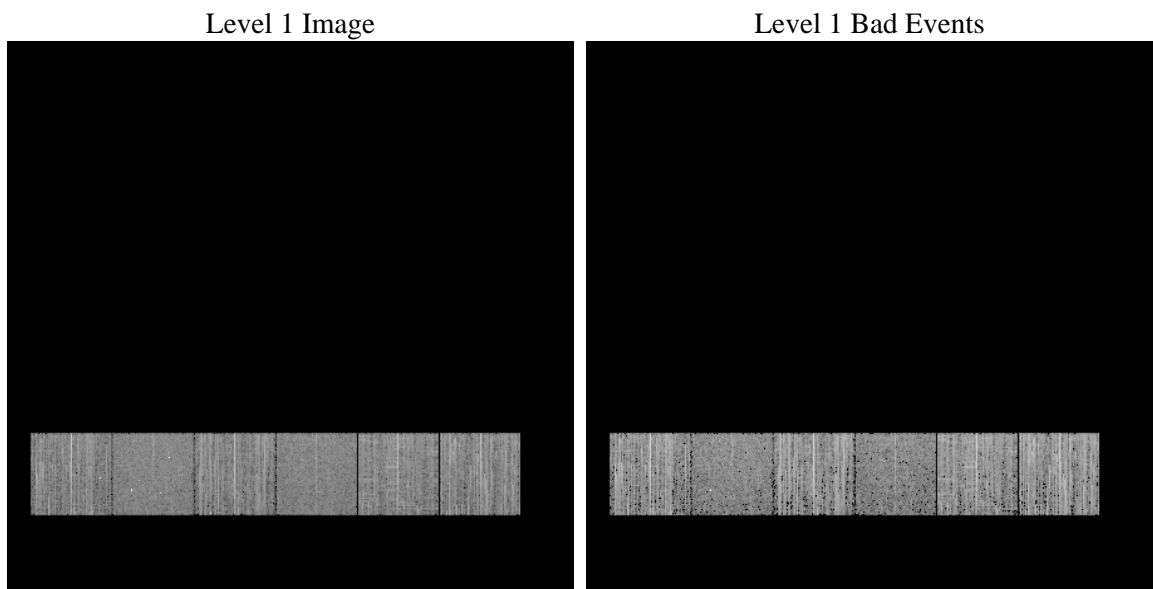
1 Front

seq_num	 	Sequence number
obs_id	54143	Observation id
title	ACIS-456789 diagnostics	Proposal title
observer	CHANDRA engineering request/realtime commanding	Principal investig
object	 	Source name
dtcycle	0	
cycle	P	events from which exps? Prim/Second/Both
ra_targ	0.0	Observer's specified target RA [deg]
dec_targ	0.0	Observer's specified target Dec [deg]
ra_nom	38.926468528556	Nominal RA [deg]
dec_nom	8.5882026973982	Nominal Dec [deg]
roll_nom	302.22838247754	Nominal Roll [deg]
revision	1	Processing version of data
ontime	3279.9999878407	Sum of GTIs [s]
livetime	3238.4666530157	Livetime [s]
ontime4	3279.9999878407	Sum of GTIs [s]
ontime5	3279.9999878407	Sum of GTIs [s]
ontime6	3279.9999878407	Sum of GTIs [s]
ontime7	3279.9999878407	Sum of GTIs [s]
ontime8	3279.9999878407	Sum of GTIs [s]
ontime9	3279.9999878407	Sum of GTIs [s]
l2events	102560	Number of level 2 events

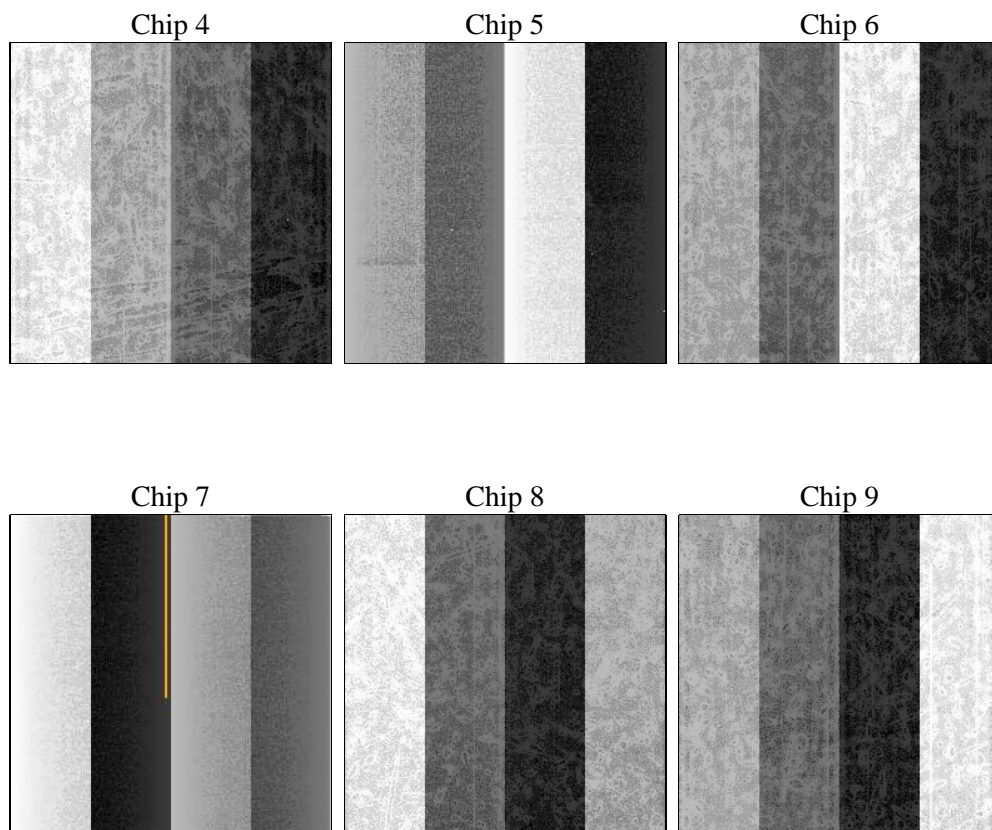
2 OBI

2.1 OBI

2.1.1 Images



2.1.2 Bias



2.1.3 Parameters

obi_num	1	Obi number	sched_exp_time	0.0	[s] Scheduled observation exposure time
ascdsver	8.4.5	Processing system revision	ontime	3279.9999878407	Sum of GTIs [s]
caldsver	4.5.2	 	ontime4	3279.9999878407	Sum of GTIs [s]
date	2012-11-25T20:56:19	Date and time of file creation	ontime5	3279.9999878407	Sum of GTIs [s]
revision	1	Processing version of data	ontime6	3279.9999878407	Sum of GTIs [s]
			ontime7	3279.9999878407	Sum of GTIs [s]
			ontime8	3279.9999878407	Sum of GTIs [s]
			ontime9	3279.9999878407	Sum of GTIs [s]
			l1events	364628	Number of level 1 events

2.1.4 Events

	ccd 4	ccd 5	ccd 6	ccd 7	ccd 8	ccd 9		ccd 4	ccd 5	ccd 6	ccd 7	ccd 8	ccd 9
level 1 events	61030	55352	63979	51167	64614	68486	grade 0 events	8527	3743	8414	3992	8361	7308
rejected events	45909	28816	47961	26101	46449	54127		13%	6%	13%	7%	12%	10%
rejected %	75%	52%	74%	51%	71%	79%	grade 1 events	67	51	44	38	43	41
								0%	0%	0%	0%	0%	0%
							grade 2 events	2624	9869	3045	6055	3667	2769
								4%	17%	4%	11%	5%	4%
							grade 3 events	1003	963	969	2103	1359	1012
								1%	1%	1%	4%	2%	1%
							grade 4 events	1008	898	1039	2092	1332	946
								1%	1%	1%	4%	2%	1%
							grade 5 events	1290	2514	1306	3004	1579	1395
								2%	4%	2%	5%	2%	2%
							grade 6 events	1973	11098	2569	10838	3462	2341
								3%	20%	4%	21%	5%	3%
							grade 7 events	44538	26216	46593	23045	44811	52674
								72%	47%	72%	45%	69%	76%

2.2 Compared Parameters

Parameter	Planned	Actual	Parameter	Planned	Actual
Instrument	ACIS	ACIS	Obspar format version number	7	7
Detector	ACIS-456789	ACIS-456789	Obspar file type	PREDICTED	ACTUAL
Grating	NONE	NONE	Obspar update status	NONE	UPDATED
Data mode	FAINT	FAINT	Number of optional ACIS chips dropped	0	0
Observation mode	SECONDARY	SECONDARY	On-chip summing requested	N	N
[deg] Pointing RA	0	38.92646852855635	Subarray requested	NONE	NONE
[deg] Pointing Dec	0	8.588202697398184	Alternating exposures requested	N	N
[deg] Pointing Roll	0.0	302.2283824775351	[s] Primary exposure time	3.2	3.2
[mm] SIM focus pos	-1.429586	-1.428180813131781			
[mm] SIM defocus	0.1037507710433287	0.1051558262725154			
[mm] SIM translation stage pos	250.455976	250.466033080201			
[mm] SIM translation stage offset	0	-0.01005468664627074			
[s] Observation start time (MET)	470194381.206972	470194380.18197			
Observation start date	2012-11-25T01:33:01	2012-11-25T01:33:00			
[s] Observation end time (MET)	470210344.557831	470210343.53283			
Observation end date	2012-11-25T05:59:05	2012-11-25T05:59:03			
Read mode	TIMED	TIMED			

2.3 Star Slots

2.4 FID Slots

A Summary

A.1 Status

V&V Scientist	Joy Nichols
V&V Date (YYYY-MM-DD)	2012.11.26
V&V Edition	1
V&V Disposition and Status	OK
V&V Charge Time	3.2799999878407

A.2 Comments