

# V&V Reference Report

## L2 ASCDS Version : 8.4.5

Observation 54128 - L2 Version 1  
Chandra X-Ray Center

L2 Processing Date : Dec 1 2012

## Contents

<b>1</b>	<b>Front</b>	<b>2</b>
<b>2</b>	<b>OBI</b>	<b>3</b>
2.1	OBI . . . . .	3
2.1.1	Images . . . . .	3
2.1.2	Bias . . . . .	3
2.1.3	Parameters . . . . .	4
2.1.4	Events . . . . .	4
2.2	Compared Parameters . . . . .	5
2.3	Star Slots . . . . .	6
2.4	FID Slots . . . . .	6
<b>A</b>	<b>Summary</b>	<b>7</b>
A.1	Status . . . . .	7
A.2	Comments . . . . .	7

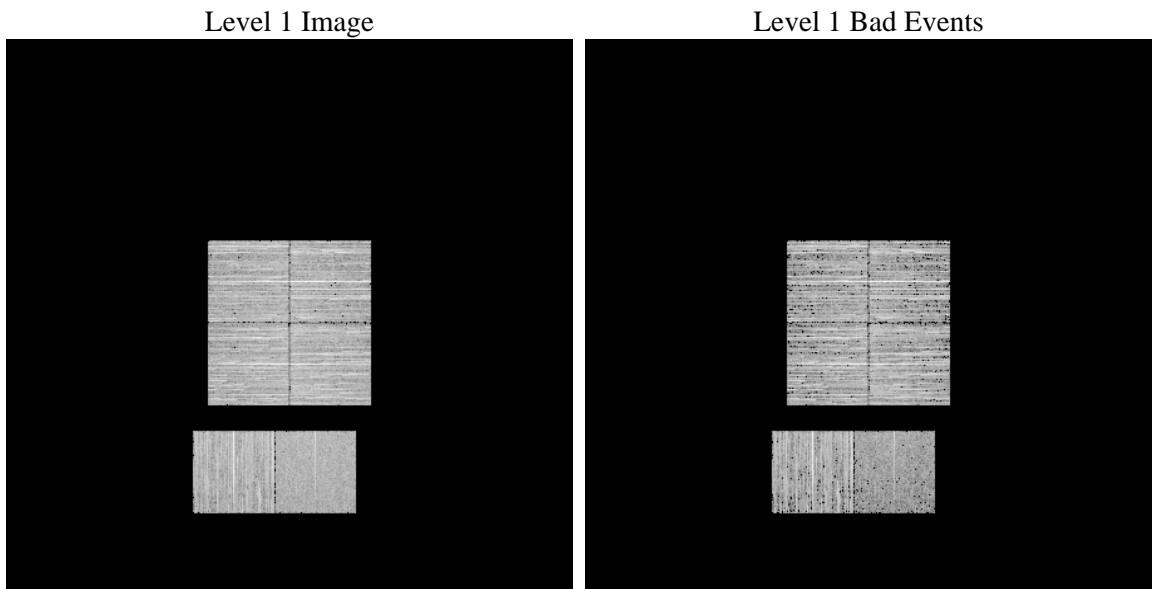
# 1 Front

seq_num	&#160	Sequence number
obs_id	54128	Observation id
title	ACIS-012367 diagnostics	Proposal title
observer	CHANDRA engineering request/realtime commanding	Principal investig
object	&#160	Source name
dtcycle	0	&#160
cycle	P	events from which exps? Prim/Second/Both
ra_targ	0.0	Observer's specified target RA [deg]
dec_targ	0.0	Observer's specified target Dec [deg]
ra_nom	53.729037000803	Nominal RA [deg]
dec_nom	-0.59848408050317	Nominal Dec [deg]
roll_nom	330.77723637093	Nominal Roll [deg]
revision	1	Processing version of data
ontime	3286.3999878168	Sum of GTIs [s]
livetime	3244.7856123386	Livetime [s]
ontime0	3286.3999878168	Sum of GTIs [s]
ontime1	3286.3999878168	Sum of GTIs [s]
ontime2	3286.3999878168	Sum of GTIs [s]
ontime3	3286.3999878168	Sum of GTIs [s]
ontime6	3286.3999878168	Sum of GTIs [s]
ontime7	3286.3999878168	Sum of GTIs [s]
l2events	90040	Number of level 2 events

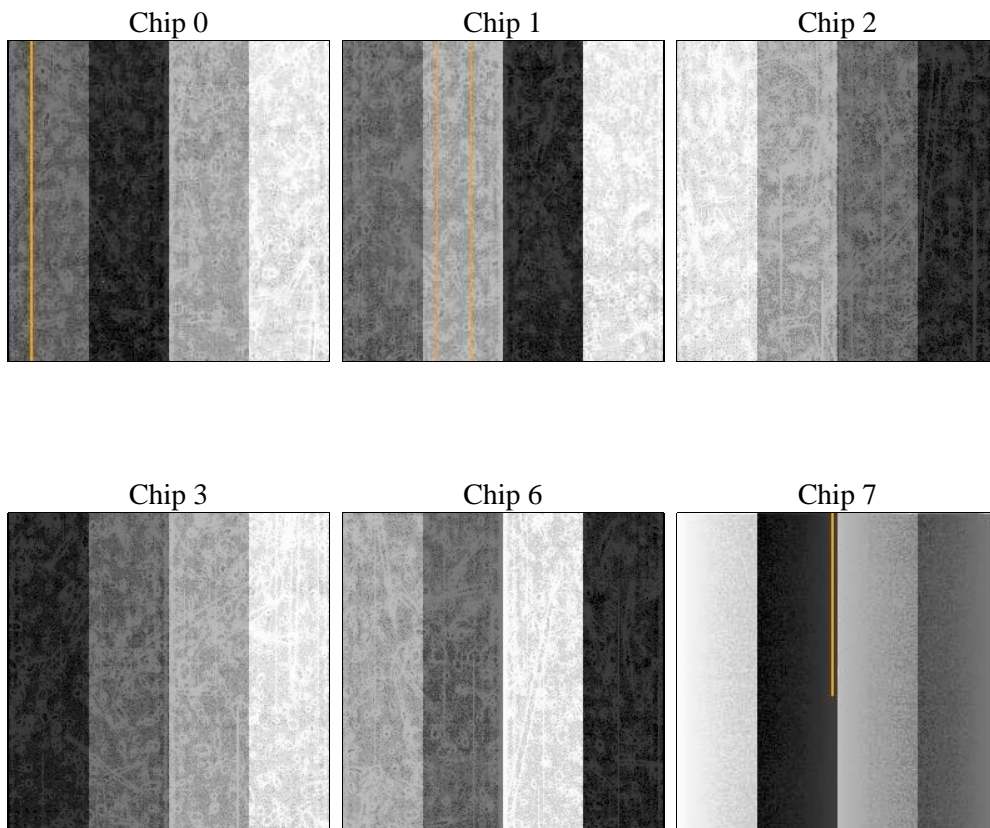
## 2 OBI

### 2.1 OBI

#### 2.1.1 Images



#### 2.1.2 Bias



### 2.1.3 Parameters

obi_num	0	Obi number	sched_exp_time	0.0	[s] Scheduled observation exposure time
ascdsver	8.4.5	Processing system revision	ontime	3286.3999878168	Sum of GTIs [s]
caldbver	4.5.2	&#160	ontime0	3286.3999878168	Sum of GTIs [s]
date	2012-12-01T11:38:15	Date and time of file creation	ontime1	3286.3999878168	Sum of GTIs [s]
revision	1	Processing version of data	ontime2	3286.3999878168	Sum of GTIs [s]
			ontime3	3286.3999878168	Sum of GTIs [s]
			ontime6	3286.3999878168	Sum of GTIs [s]
			ontime7	3286.3999878168	Sum of GTIs [s]
			l1events	382059	Number of level 1 events

### 2.1.4 Events

	ccd 0	ccd 1	ccd 2	ccd 3	ccd 6	ccd 7		ccd 0	ccd 1	ccd 2	ccd 3	ccd 6	ccd 7
level 1 events	63766	65408	67873	68982	64163	51867	grade 0 events	7105	6702	7421	7519	6923	3504
rejected events	49765	51296	53756	54754	49525	27737		11%	10%	10%	10%	10%	6%
rejected %	78%	78%	79%	79%	77%	53%	grade 1 events	38	30	47	41	29	33
								0%	0%	0%	0%	0%	0%
							grade 2 events	2934	3247	2755	2812	3394	6058
								4%	4%	4%	4%	5%	11%
							grade 3 events	901	914	925	974	880	1787
								1%	1%	1%	1%	1%	3%
							grade 4 events	929	936	918	930	893	1897
								1%	1%	1%	1%	1%	3%
							grade 5 events	1173	1093	1086	1247	1104	2890
								1%	1%	1%	1%	1%	5%
							grade 6 events	2145	2326	2114	2015	2565	10899
								3%	3%	3%	2%	3%	21%
							grade 7 events	48541	50160	52607	53444	48375	24799
								76%	76%	77%	77%	75%	47%

## 2.2 Compared Parameters

Parameter	Planned	Actual	Parameter	Planned	Actual
Instrument	ACIS	ACIS	Obspar format version number	7	7
Detector	ACIS-012367	ACIS-012367	Obspar file type	PREDICTED	ACTUAL
Grating	NONE	NONE	Obspar update status	NONE	UPDATED
Data mode	FAINT	FAINT	Number of optional ACIS chips dropped	0	0
Observation mode	SECONDARY	SECONDARY	On-chip summing requested	N	N
[deg] Pointing RA	0	53.72903700080308	Subarray requested	NONE	NONE
[deg] Pointing Dec	0	-0.5984840805031713	Alternating exposures requested	N	N
[deg] Pointing Roll	0.0	330.7772363709295	[s] Primary exposure time	3.2	3.2
[mm] SIM focus pos	-1.429586	-1.428180813131781			
[mm] SIM defocus	0.1037507710433287	0.1051558262725154			
[mm] SIM translation stage pos	250.455976	250.466033080201			
[mm] SIM translation stage offset	0	-0.01005468664627074			
[s] Observation start time (MET)	470678205.832986	470678204.80799			
Observation start date	2012-11-30T15:56:46	2012-11-30T15:56:44			
[s] Observation end time (MET)	470683695.733281	470683694.70828			
Observation end date	2012-11-30T17:28:16	2012-11-30T17:28:14			
Read mode	TIMED	TIMED			

## **2.3 Star Slots**

## **2.4 FID Slots**

## **A Summary**

### **A.1 Status**

V&V Scientist	Jen Lauer
V&V Date (YYYY-MM-DD)	2012.12.02
V&V Edition	1
V&V Disposition and Status	OK
V&V Charge Time	3.2863999878168

### **A.2 Comments**