

V&V Reference Report

L2 ASCDS Version : 8.4.3

Observation 55615 - L2 Version 2
Chandra X-Ray Center

L2 Processing Date : Feb 5 2012

Contents

1	Front	2
2	OBI	3
2.1	OBI	3
2.1.1	Images	3
2.1.2	Bias	3
2.1.3	Parameters	4
2.1.4	Events	4
2.2	Compared Parameters	5
2.3	Star Slots	6
2.4	FID Slots	6
A	Summary	7
A.1	Status	7
A.2	Comments	7

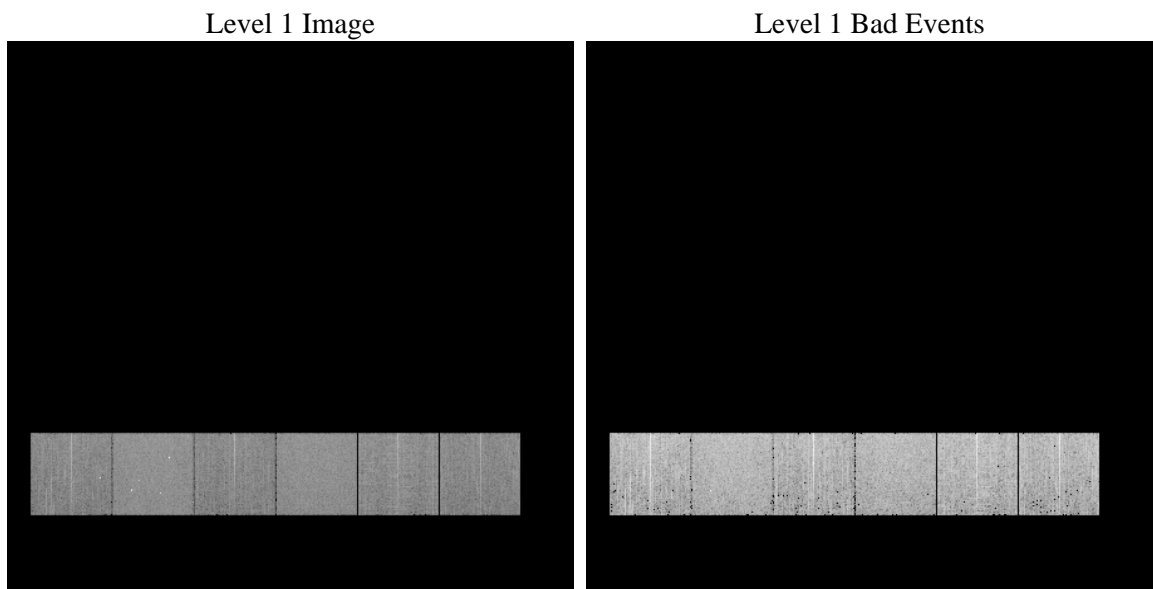
1 Front

seq_num	 	Sequence number
obs_id	55615	Observation id
title	ACIS-456789 diagnostics	Proposal title
observer	CHANDRA engineering request/realtime commanding	Principal investig
object	 	Source name
dtcycle	0	
cycle	P	events from which exps? Prim/Second/Both
ra_targ	0.0	Observer's specified target RA [deg]
dec_targ	0.0	Observer's specified target Dec [deg]
ra_nom	142.99996932049	Nominal RA [deg]
dec_nom	21.971200433534	Nominal Dec [deg]
roll_nom	236.57516442455	Nominal Roll [deg]
revision	2	Processing version of data
ontime	5186.8035883904	Sum of GTIs [s]
livetime	5121.125158236	Livetime [s]
ontime4	5186.6804683805	Sum of GTIs [s]
ontime5	5186.7625483871	Sum of GTIs [s]
ontime6	5186.7215083838	Sum of GTIs [s]
ontime7	5186.8035883904	Sum of GTIs [s]
ontime8	5186.6394283772	Sum of GTIs [s]
ontime9	5186.8446283937	Sum of GTIs [s]
l2events	230267	Number of level 2 events

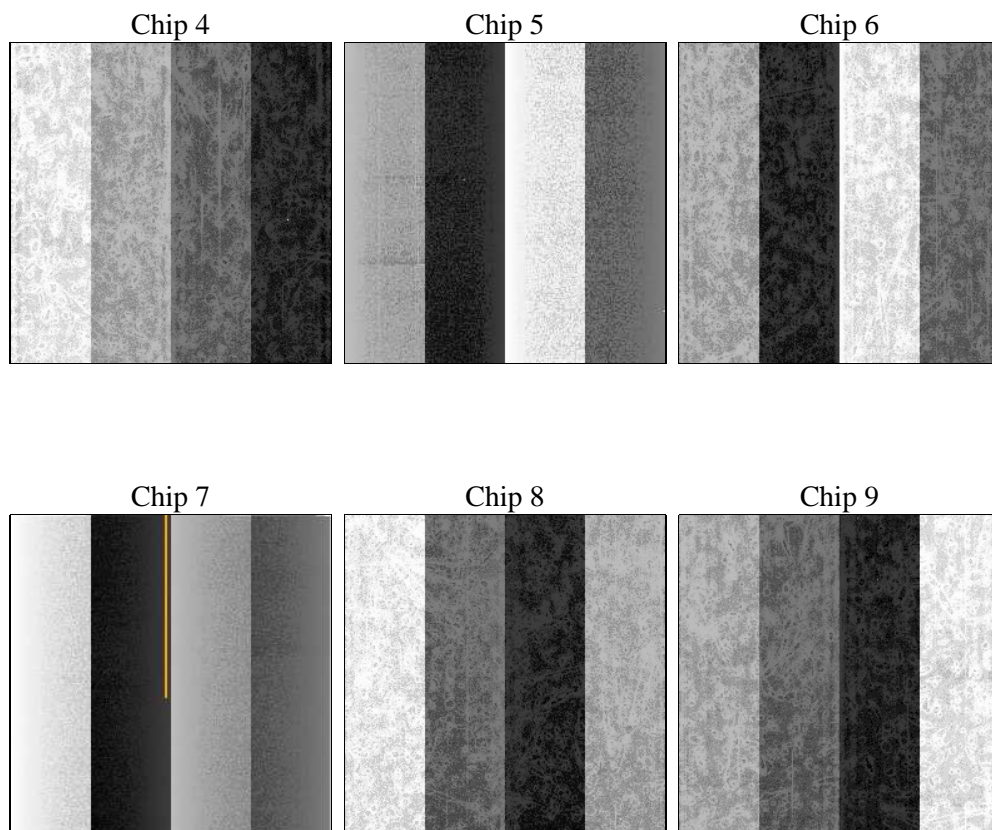
2 OBI

2.1 OBI

2.1.1 Images



2.1.2 Bias



2.1.3 Parameters

obi_num	0	Obi number	sched_exp_time	0.0	[s] Scheduled observation exposure time
ascdsver	8.4.3	Processing system revision	ontime	5186.8035883904	Sum of GTIs [s]
caldsver	4.4.7	 	ontime4	5186.6804683805	Sum of GTIs [s]
date	2012-02-05T15:51:11	Date and time of file creation	ontime5	5186.7625483871	Sum of GTIs [s]
revision	2	Processing version of data	ontime6	5186.7215083838	Sum of GTIs [s]
			ontime7	5186.8035883904	Sum of GTIs [s]
			ontime8	5186.6394283772	Sum of GTIs [s]
			ontime9	5186.8446283937	Sum of GTIs [s]
			l1events	504320	Number of level 1 events

2.1.4 Events

	ccd 4	ccd 5	ccd 6	ccd 7	ccd 8	ccd 9		ccd 4	ccd 5	ccd 6	ccd 7	ccd 8	ccd 9
level 1 events	75867	97924	73685	93966	87412	75466	grade 0 events	19004	8794	17692	9399	20102	17798
rejected events	42682	41401	39406	39626	45193	41876		25%	8%	24%	10%	22%	23%
rejected %	56%	42%	53%	42%	51%	55%	grade 1 events	154	247	94	74	114	122
								0%	0%	0%	0%	0%	0%
							grade 2 events	5196	19422	6259	11820	7943	5796
								6%	19%	8%	12%	9%	7%
							grade 3 events	2334	2394	2299	4771	3304	2224
								3%	2%	3%	5%	3%	2%
							grade 4 events	2308	2326	2227	4888	3145	2318
								3%	2%	3%	5%	3%	3%
							grade 5 events	2502	5351	2551	6245	3275	2839
								3%	5%	3%	6%	3%	3%
							grade 6 events	4364	23631	5821	23490	7747	5477
								5%	24%	7%	24%	8%	7%
							grade 7 events	40005	35759	36742	33279	41782	38892
								52%	36%	49%	35%	47%	51%

2.2 Compared Parameters

Parameter	Planned	Actual	Parameter	Planned	Actual
Instrument	ACIS	ACIS	Obspar format version number	7	7
Detector	ACIS-456789	ACIS-456789	Obspar file type	PREDICTED	ACTUAL
Grating	NONE	NONE	Obspar update status	NONE	UPDATED
Data mode	FAINT	FAINT	Number of optional ACIS chips dropped	0	0
Observation mode	SECONDARY	SECONDARY	On-chip summing requested	N	N
[deg] Pointing RA	0	142.9999693204933	Subarray requested	NONE	NONE
[deg] Pointing Dec	0	21.97120043353416	Alternating exposures requested	N	N
[deg] Pointing Roll	0.0	236.5751644245549	[s] Primary exposure time	3.2	3.2
[mm] SIM focus pos	-1.429586	-1.428180813131781			
[mm] SIM defocus	0.1037507710433287	0.1051558262725154			
[mm] SIM translation stage pos	250.455976	250.466033080201			
[mm] SIM translation stage offset	0	-0.01005468664627074			
[s] Observation start time (MET)	415582004.787051	415582003.76206			
Observation start date	2011-03-03T23:26:45	2011-03-03T23:26:43			
[s] Observation end time (MET)	415601391.638055	415601390.61307			
Observation end date	2011-03-04T04:49:52	2011-03-04T04:49:50			
Read mode	TIMED	TIMED			

2.3 Star Slots

2.4 FID Slots

A Summary

A.1 Status

V&V Scientist	Beth Sundheim
V&V Date (YYYY-MM-DD)	2012.02.08
V&V Edition	1
V&V Disposition and Status	OK
V&V Charge Time	5.1868035883904

A.2 Comments