

V&V Reference Report

L2 ASCDS Version : 8.4.5

Observation 56531 - L2 Version 3
Chandra X-Ray Center

L2 Processing Date : Jun 19 2012

Contents

1	Front	2
2	OBI	3
2.1	OBI	3
2.1.1	Images	3
2.1.2	Bias	3
2.1.3	Parameters	4
2.1.4	Events	4
2.2	Compared Parameters	5
2.3	Star Slots	6
2.4	FID Slots	6
A	Summary	7
A.1	Status	7
A.2	Comments	7

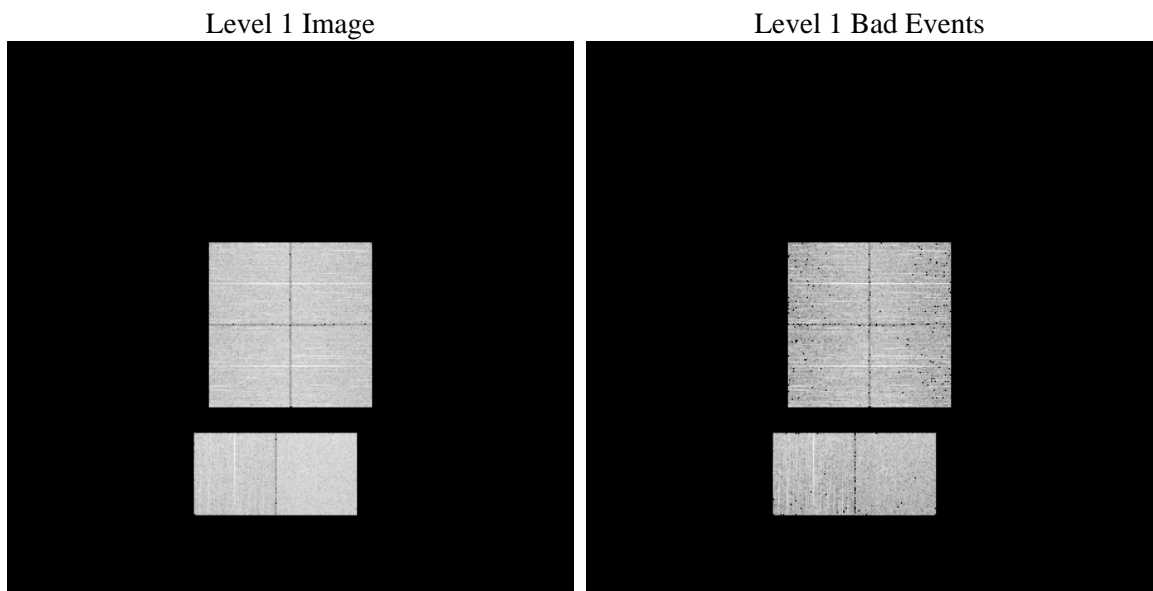
1 Front

seq_num	 	Sequence number
obs_id	56531	Observation id
title	ACIS-012367 diagnostics	Proposal title
observer	CHANDRA engineering request/realtime commanding	Principal investig
object	 	Source name
dtcycle	0	
cycle	P	events from which exps? Prim/Second/Both
ra_targ	0.0	Observer's specified target RA [deg]
dec_targ	0.0	Observer's specified target Dec [deg]
ra_nom	99.528613105274	Nominal RA [deg]
dec_nom	-0.49724481336081	Nominal Dec [deg]
roll_nom	332.85158664527	Nominal Roll [deg]
revision	3	Processing version of data
ontime	4021.6710861325	Sum of GTIs [s]
livetime	3970.7462652803	Livetime [s]
ontime0	4021.6300461292	Sum of GTIs [s]
ontime1	4021.5890061259	Sum of GTIs [s]
ontime2	4021.5479661226	Sum of GTIs [s]
ontime3	4021.7121261358	Sum of GTIs [s]
ontime6	4021.5069261193	Sum of GTIs [s]
ontime7	4021.6710861325	Sum of GTIs [s]
l2events	209239	Number of level 2 events

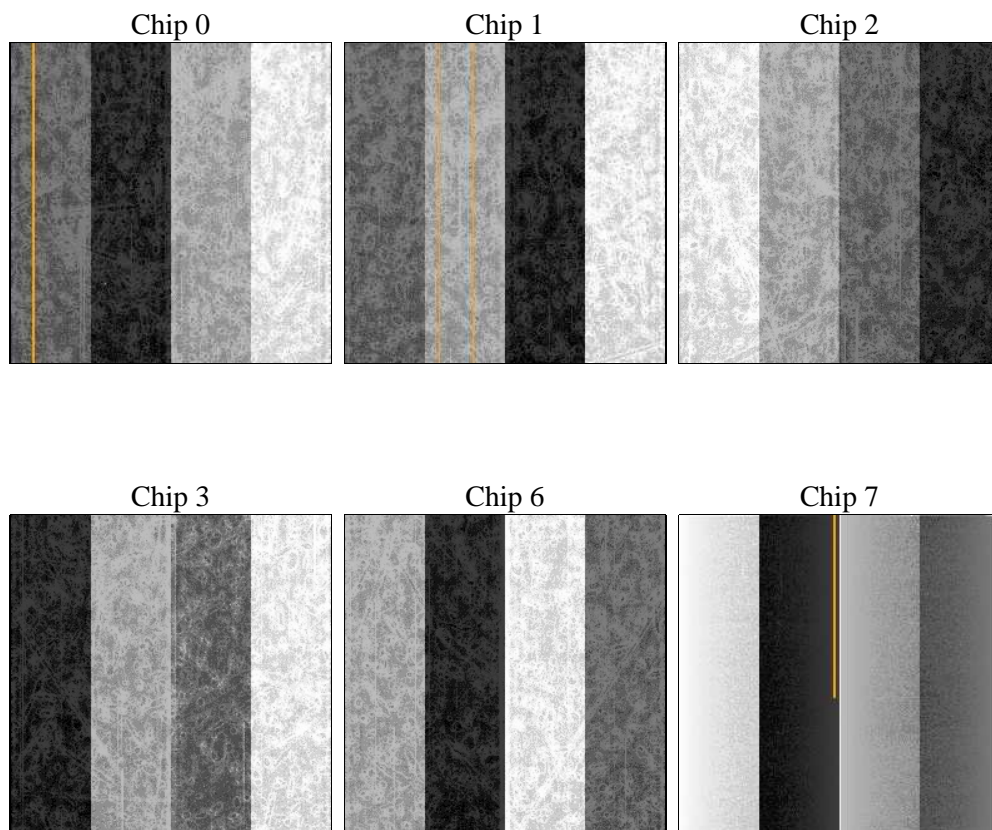
2 OBI

2.1 OBI

2.1.1 Images



2.1.2 Bias



2.1.3 Parameters

obi_num	0	Obi number	sched_exp_time	0.0	[s] Scheduled observation exposure time
ascdsver	8.4.5	Processing system revision	ontime	4021.6710861325	Sum of GTIs [s]
caldbver	4.4.10	 	ontime0	4021.6300461292	Sum of GTIs [s]
date	2012-06-19T10:28:33	Date and time of file creation	ontime1	4021.5890061259	Sum of GTIs [s]
revision	2	Processing version of data	ontime2	4021.5479661226	Sum of GTIs [s]
			ontime3	4021.7121261358	Sum of GTIs [s]
			ontime6	4021.5069261193	Sum of GTIs [s]
			ontime7	4021.6710861325	Sum of GTIs [s]
			l1events	441311	Number of level 1 events

2.1.4 Events

	ccd 0	ccd 1	ccd 2	ccd 3	ccd 6	ccd 7		ccd 0	ccd 1	ccd 2	ccd 3	ccd 6	ccd 7
level 1 events	69503	68393	70415	70817	73862	88321	grade 0 events	17750	17272	17881	18245	18062	9528
rejected events	35837	35156	37423	37344	39134	35263		25%	25%	25%	25%	24%	10%
rejected %	51%	51%	53%	52%	52%	39%	grade 1 events	141	104	132	152	112	63
								0%	0%	0%	0%	0%	0%
							grade 2 events	6204	6307	5701	5791	6202	11523
								8%	9%	8%	8%	8%	13%
							grade 3 events	2328	2142	2256	2253	2286	4882
								3%	3%	3%	3%	3%	5%
							grade 4 events	2264	2212	2287	2291	2284	4782
								3%	3%	3%	3%	3%	5%
							grade 5 events	2060	2089	1930	2262	2188	5617
								2%	3%	2%	3%	2%	6%
							grade 6 events	5120	5304	4867	4893	5894	22343
								7%	7%	6%	6%	7%	25%
							grade 7 events	33636	32963	35361	34930	36834	29583
								48%	48%	50%	49%	49%	33%

2.2 Compared Parameters

Parameter	Planned	Actual	Parameter	Planned	Actual
Instrument	ACIS	ACIS	Obspar format version number	7	7
Detector	ACIS-012367	ACIS-012367	Obspar file type	PREDICTED	ACTUAL
Grating	NONE	NONE	Obspar update status	NONE	UPDATED
Data mode	FAINT	FAINT	Number of optional ACIS chips dropped	0	0
Observation mode	SECONDARY	SECONDARY	On-chip summing requested	N	N
[deg] Pointing RA	0	99.5286131052741	Subarray requested	NONE	NONE
[deg] Pointing Dec	0	-0.4972448133608133	Alternating exposures requested	N	N
[deg] Pointing Roll	0.0	332.8515866452661	[s] Primary exposure time	3.2	3.2
[mm] SIM focus pos	-1.429586	-0.6828225247311905			
[mm] SIM defocus	0.1037507710433287	0.8505141146731063			
[mm] SIM translation stage pos	250.455976	250.466033080201			
[mm] SIM translation stage offset	0	-0.01005468664627074			
[s] Observation start time (MET)	379516769.090949	379516768.06594			
Observation start date	2010-01-10T13:19:29	2010-01-10T13:19:28			
[s] Observation end time (MET)	379525217.141377	379525216.11637			
Observation end date	2010-01-10T15:40:17	2010-01-10T15:40:16			
Read mode	TIMED	TIMED			

2.3 Star Slots

2.4 FID Slots

A Summary

A.1 Status

V&V Scientist	Jen Lauer
V&V Date (YYYY-MM-DD)	2012.06.25
V&V Edition	1
V&V Disposition and Status	OK
V&V Charge Time	4.0216710861325

A.2 Comments