

V&V Reference Report

L2 ASCDS Version : 8.4.5

Observation 56494 - L2 Version 2
Chandra X-Ray Center

L2 Processing Date : Jun 20 2012

Contents

| | | |
|----------|-------------------------------|----------|
| 1 | Front | 2 |
| 2 | OBI | 3 |
| 2.1 | OBI | 3 |
| 2.1.1 | Images | 3 |
| 2.1.2 | Bias | 3 |
| 2.1.3 | Parameters | 4 |
| 2.1.4 | Events | 4 |
| 2.2 | Compared Parameters | 5 |
| 2.3 | Star Slots | 6 |
| 2.4 | FID Slots | 6 |
| A | Summary | 7 |
| A.1 | Status | 7 |
| A.2 | Comments | 7 |

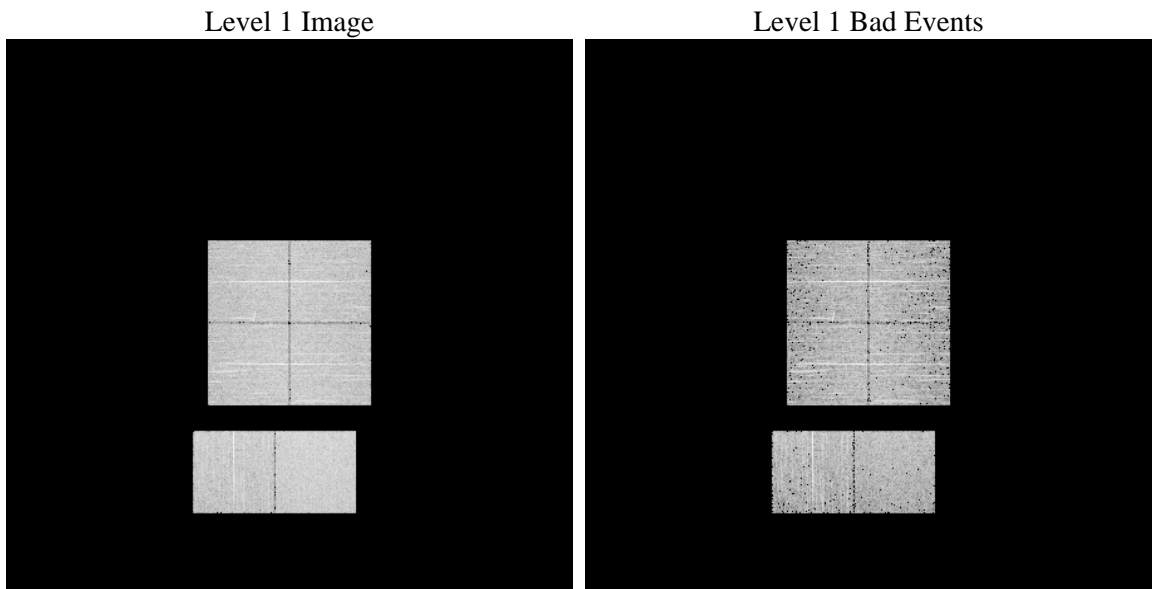
1 Front

| | | |
|----------|---|---|
| seq_num | | Sequence number |
| obs_id | 56494 | Observation id |
| title | ACIS-012367 diagnostics | Proposal title |
| observer | CHANDRA engineering request/realtime commanding | Principal investig |
| object | | Source name |
| dtcycle | 0 | |
| cycle | P | events from which exps? Prim/Second/Both |
| ra_targ | 0.0 | Observer's specified target RA [deg] |
| dec_targ | 0.0 | Observer's specified target Dec [deg] |
| ra_nom | 120.00418458323 | Nominal RA [deg] |
| dec_nom | 5.9939736797883 | Nominal Dec [deg] |
| roll_nom | 339.19008224689 | Nominal Roll [deg] |
| revision | 2 | Processing version of data |
| ontime | 3382.3096048236 | Sum of GTIs [s] |
| livetime | 3339.480764025 | Livetime [s] |
| ontime0 | 3379.1096744537 | Sum of GTIs [s] |
| ontime1 | 3382.3916848302 | Sum of GTIs [s] |
| ontime2 | 3379.1589972377 | Sum of GTIs [s] |
| ontime3 | 3382.2685648203 | Sum of GTIs [s] |
| ontime6 | 3382.3999874592 | Sum of GTIs [s] |
| ontime7 | 3382.3096048236 | Sum of GTIs [s] |
| l2events | 174860 | Number of level 2 events |

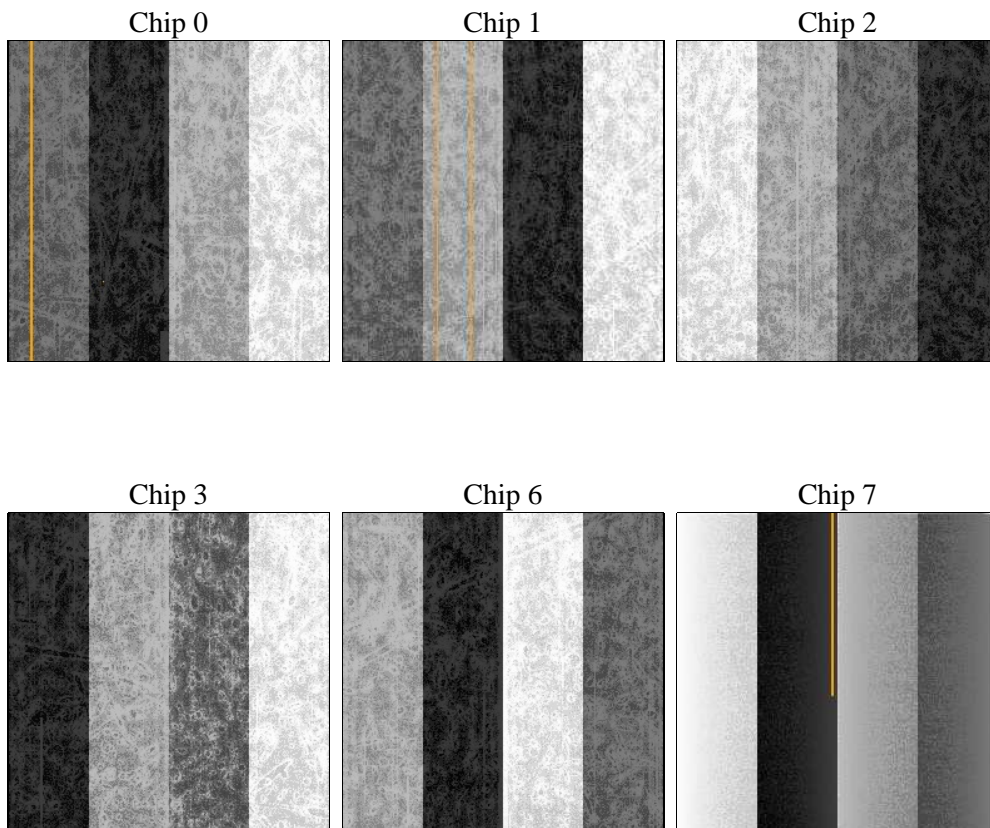
2 OBI

2.1 OBI

2.1.1 Images



2.1.2 Bias



2.1.3 Parameters

| | | | | | |
|----------|---------------------|--------------------------------|----------------|-----------------|---|
| obi_num | 0 | Obi number | sched_exp_time | 0.0 | [s] Scheduled observation exposure time |
| ascdsver | 8.4.5 | Processing system revision | ontime | 3382.3096048236 | Sum of GTIs [s] |
| caldsver | 4.4.10 | | ontime0 | 3379.1096744537 | Sum of GTIs [s] |
| date | 2012-06-20T12:07:42 | Date and time of file creation | ontime1 | 3382.3916848302 | Sum of GTIs [s] |
| revision | 2 | Processing version of data | ontime2 | 3379.1589972377 | Sum of GTIs [s] |
| | | | ontime3 | 3382.2685648203 | Sum of GTIs [s] |
| | | | ontime6 | 3382.3999874592 | Sum of GTIs [s] |
| | | | ontime7 | 3382.3096048236 | Sum of GTIs [s] |
| | | | l1events | 363978 | Number of level 1 events |

2.1.4 Events

| | ccd 0 | ccd 1 | ccd 2 | ccd 3 | ccd 6 | ccd 7 | | ccd 0 | ccd 1 | ccd 2 | ccd 3 | ccd 6 | ccd 7 |
|-----------------|-------|-------|-------|-------|-------|-------|----------------|-------|-------|-------|-------|-------|-------|
| level 1 events | 56156 | 56798 | 59581 | 58884 | 60351 | 72208 | grade 0 events | 14642 | 14667 | 15050 | 15134 | 15295 | 7858 |
| rejected events | 28181 | 28568 | 31712 | 30726 | 31220 | 28401 | | 26% | 25% | 25% | 25% | 25% | 10% |
| rejected % | 50% | 50% | 53% | 52% | 51% | 39% | grade 1 events | 105 | 93 | 133 | 121 | 86 | 71 |
| | | | | | | | | 0% | 0% | 0% | 0% | 0% | 0% |
| | | | | | | | grade 2 events | 5219 | 5378 | 4991 | 4937 | 5311 | 9438 |
| | | | | | | | | 9% | 9% | 8% | 8% | 8% | 13% |
| | | | | | | | grade 3 events | 1953 | 1913 | 1907 | 1902 | 1890 | 4095 |
| | | | | | | | | 3% | 3% | 3% | 3% | 3% | 5% |
| | | | | | | | grade 4 events | 1910 | 1846 | 1996 | 2030 | 1849 | 4109 |
| | | | | | | | | 3% | 3% | 3% | 3% | 3% | 5% |
| | | | | | | | grade 5 events | 1674 | 1693 | 1594 | 1938 | 1855 | 4705 |
| | | | | | | | | 2% | 2% | 2% | 3% | 3% | 6% |
| | | | | | | | grade 6 events | 4251 | 4426 | 3925 | 4155 | 4786 | 18307 |
| | | | | | | | | 7% | 7% | 6% | 7% | 7% | 25% |
| | | | | | | | grade 7 events | 26402 | 26782 | 29985 | 28667 | 29279 | 23625 |
| | | | | | | | | 47% | 47% | 50% | 48% | 48% | 32% |

2.2 Compared Parameters

| Parameter | Planned | Actual | Parameter | Planned | Actual |
|-----------------------------------|---------------------|-----------------------|---------------------------------------|-----------|---------|
| Instrument | ACIS | ACIS | Obspar format version number | 7 | 7 |
| Detector | ACIS-012367 | ACIS-012367 | Obspar file type | PREDICTED | ACTUAL |
| Grating | NONE | NONE | Obspar update status | NONE | UPDATED |
| Data mode | FAINT | FAINT | Number of optional ACIS chips dropped | 0 | 0 |
| Observation mode | SECONDARY | SECONDARY | On-chip summing requested | N | N |
| [deg] Pointing RA | 0 | 120.0041845832294 | Subarray requested | NONE | NONE |
| [deg] Pointing Dec | 0 | 5.993973679788287 | Alternating exposures requested | N | N |
| [deg] Pointing Roll | 0.0 | 339.1900822468876 | [s] Primary exposure time | 3.2 | 3.2 |
| [mm] SIM focus pos | -1.429586 | -0.7809083437167272 | | | |
| [mm] SIM defocus | 0.1037507710433287 | 0.7524282956875696 | | | |
| [mm] SIM translation stage pos | 250.455976 | 250.4635187648994 | | | |
| [mm] SIM translation stage offset | 0 | -0.007540371344731511 | | | |
| [s] Observation start time (MET) | 380623814.246966 | 380623813.22196 | | | |
| Observation start date | 2010-01-23T08:50:14 | 2010-01-23T08:50:13 | | | |
| [s] Observation end time (MET) | 380632545.197408 | 380632544.17241 | | | |
| Observation end date | 2010-01-23T11:15:45 | 2010-01-23T11:15:44 | | | |
| Read mode | TIMED | TIMED | | | |

2.3 Star Slots

2.4 FID Slots

A Summary

A.1 Status

| | |
|----------------------------|-----------------|
| V&V Scientist | Beth Sundheim |
| V&V Date (YYYY-MM-DD) | 2012.06.27 |
| V&V Edition | 1 |
| V&V Disposition and Status | OK |
| V&V Charge Time | 3.3823096048236 |

A.2 Comments