

V&V Reference Report

L2 ASCDS Version : 8.4.5

Observation 56479 - L2 Version 2
Chandra X-Ray Center

L2 Processing Date : Jun 20 2012

Contents

1	Front	2
2	OBI	3
2.1	OBI	3
2.1.1	Images	3
2.1.2	Bias	3
2.1.3	Parameters	4
2.1.4	Events	4
2.2	Compared Parameters	5
2.3	Star Slots	6
2.4	FID Slots	6
A	Summary	7
A.1	Status	7
A.2	Comments	7

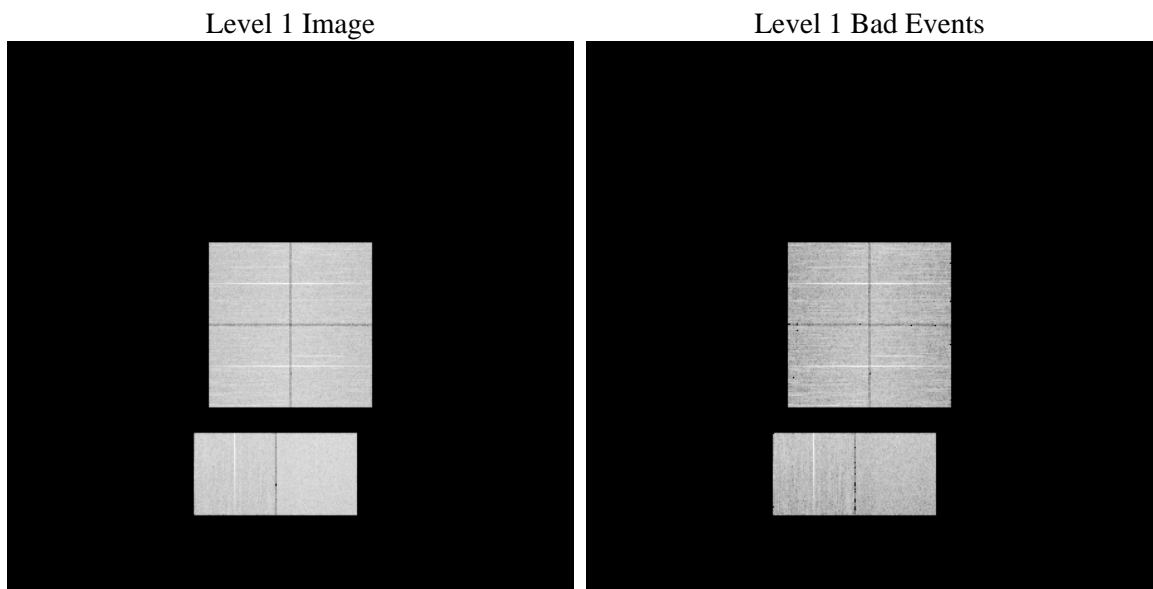
1 Front

seq_num	 	Sequence number
obs_id	56479	Observation id
title	ACIS-012367 diagnostics	Proposal title
observer	CHANDRA engineering request/realtime commanding	Principal investig
object	 	Source name
dtcycle	0	
cycle	P	events from which exps? Prim/Second/Both
ra_targ	0.0	Observer's specified target RA [deg]
dec_targ	0.0	Observer's specified target Dec [deg]
ra_nom	129.97067938158	Nominal RA [deg]
dec_nom	42.481161074873	Nominal Dec [deg]
roll_nom	188.11982902728	Nominal Roll [deg]
revision	2	Processing version of data
ontime	8245.1879284978	Sum of GTIs [s]
livetime	8140.782394291	Livetime [s]
ontime0	8245.1468884945	Sum of GTIs [s]
ontime1	8245.1058484912	Sum of GTIs [s]
ontime2	8245.0648084879	Sum of GTIs [s]
ontime3	8245.2289685011	Sum of GTIs [s]
ontime6	8245.0237684846	Sum of GTIs [s]
ontime7	8245.1879284978	Sum of GTIs [s]
l2events	423742	Number of level 2 events

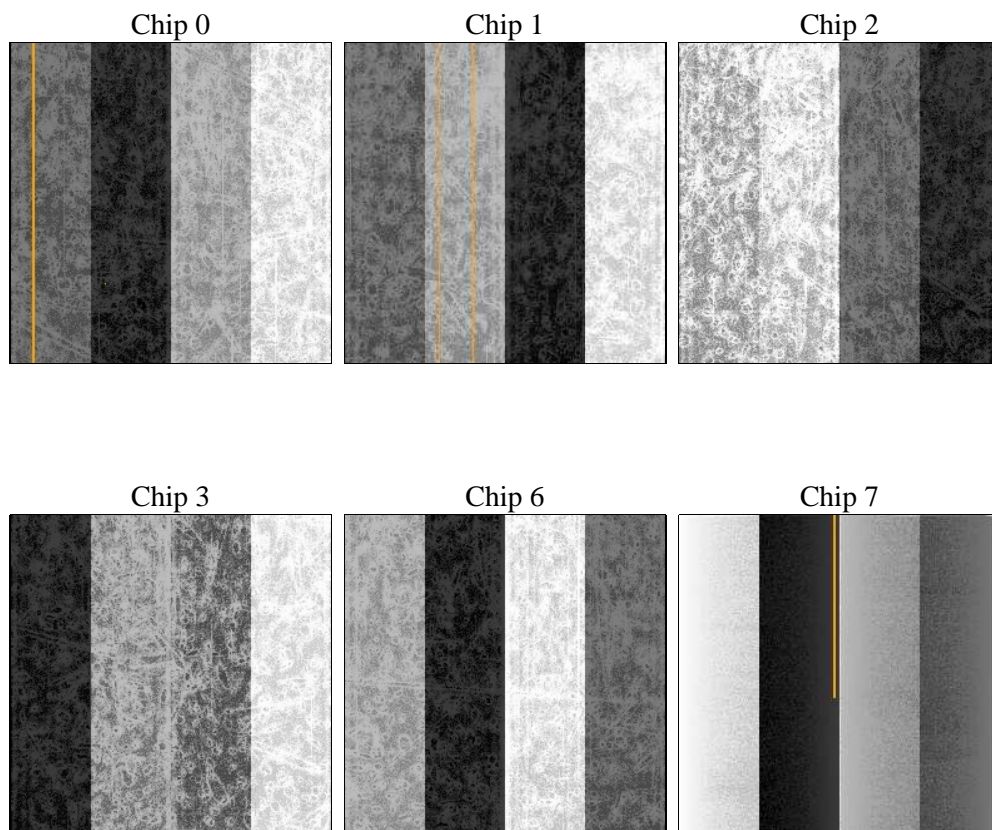
2 OBI

2.1 OBI

2.1.1 Images



2.1.2 Bias



2.1.3 Parameters

obi_num	0	Obi number	sched_exp_time	0.0	[s] Scheduled observation exposure time
ascdsver	8.4.5	Processing system revision	ontime	8245.1879284978	Sum of GTIs [s]
caldsver	4.4.10	 	ontime0	8245.1468884945	Sum of GTIs [s]
date	2012-06-20T15:28:05	Date and time of file creation	ontime1	8245.1058484912	Sum of GTIs [s]
revision	2	Processing version of data	ontime2	8245.0648084879	Sum of GTIs [s]
			ontime3	8245.2289685011	Sum of GTIs [s]
			ontime6	8245.0237684846	Sum of GTIs [s]
			ontime7	8245.1879284978	Sum of GTIs [s]
			l1events	881834	Number of level 1 events

2.1.4 Events

	ccd 0	ccd 1	ccd 2	ccd 3	ccd 6	ccd 7		ccd 0	ccd 1	ccd 2	ccd 3	ccd 6	ccd 7
level 1 events	135560	139307	142729	140846	145324	178068	grade 0 events	35949	35509	36700	37039	36688	19216
rejected events	68084	71263	75224	72611	75294	71093		26%	25%	25%	26%	25%	10%
rejected %	50%	51%	52%	51%	51%	39%	grade 1 events	270	234	297	273	231	152
								0%	0%	0%	0%	0%	0%
							grade 2 events	12323	12976	11956	12020	12804	23383
								9%	9%	8%	8%	8%	13%
							grade 3 events	4650	4678	4726	4757	4464	9889
								3%	3%	3%	3%	3%	5%
							grade 4 events	4608	4530	4639	4791	4678	9778
								3%	3%	3%	3%	3%	5%
							grade 5 events	4201	4296	3886	4584	4394	11467
								3%	3%	2%	3%	3%	6%
							grade 6 events	10268	10681	9765	9926	11712	45160
								7%	7%	6%	7%	8%	25%
							grade 7 events	63291	66403	70760	67456	70353	59023
								46%	47%	49%	47%	48%	33%

2.2 Compared Parameters

Parameter	Planned	Actual	Parameter	Planned	Actual
Instrument	ACIS	ACIS	Obspar format version number	7	7
Detector	ACIS-012367	ACIS-012367	Obspar file type	PREDICTED	ACTUAL
Grating	NONE	NONE	Obspar update status	NONE	UPDATED
Data mode	FAINT	FAINT	Number of optional ACIS chips dropped	0	0
Observation mode	SECONDARY	SECONDARY	On-chip summing requested	N	N
[deg] Pointing RA	0	129.9706793815805	Subarray requested	NONE	NONE
[deg] Pointing Dec	0	42.48116107487252	Alternating exposures requested	N	N
[deg] Pointing Roll	0.0	188.1198290272787	[s] Primary exposure time	3.2	3.2
[mm] SIM focus pos	-1.429586	-0.7809083437167272			
[mm] SIM defocus	0.1037507710433287	0.7524282956875696			
[mm] SIM translation stage pos	250.455976	250.466033080201			
[mm] SIM translation stage offset	0	-0.01005468664627074			
[s] Observation start time (MET)	381304291.281433	381304290.25643			
Observation start date	2010-01-31T05:51:31	2010-01-31T05:51:30			
[s] Observation end time (MET)	381314096.431929	381314095.40693			
Observation end date	2010-01-31T08:34:56	2010-01-31T08:34:55			
Read mode	TIMED	TIMED			

2.3 Star Slots

2.4 FID Slots

A Summary

A.1 Status

V&V Scientist	Jen Lauer
V&V Date (YYYY-MM-DD)	2012.06.26
V&V Edition	1
V&V Disposition and Status	OK
V&V Charge Time	8.2451879284978

A.2 Comments