

# V&V Reference Report

## L2 ASCDS Version : 8.4.5

Observation 56438 - L2 Version 2  
Chandra X-Ray Center

L2 Processing Date : Jun 21 2012

## Contents

<b>1</b>	<b>Front</b>	<b>2</b>
<b>2</b>	<b>OBI</b>	<b>3</b>
2.1	OBI . . . . .	3
2.1.1	Images . . . . .	3
2.1.2	Bias . . . . .	3
2.1.3	Parameters . . . . .	4
2.1.4	Events . . . . .	4
2.2	Compared Parameters . . . . .	5
2.3	Star Slots . . . . .	6
2.4	FID Slots . . . . .	6
<b>A</b>	<b>Summary</b>	<b>7</b>
A.1	Status . . . . .	7
A.2	Comments . . . . .	7

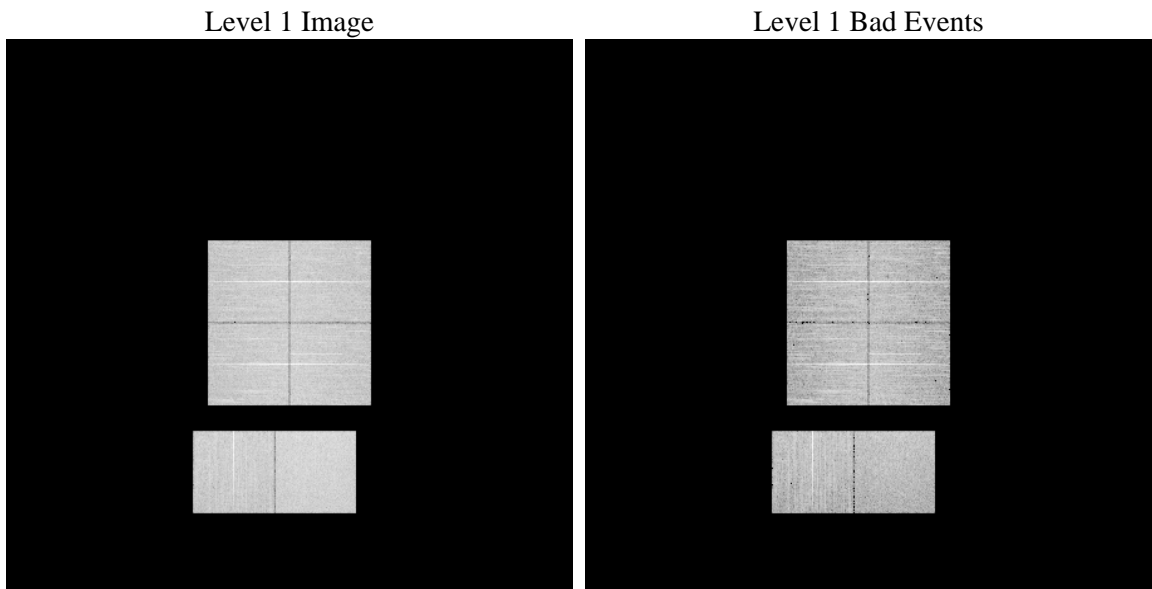
# 1 Front

seq_num	&#160	Sequence number
obs_id	56438	Observation id
title	ACIS-012367 diagnostics	Proposal title
observer	CHANDRA engineering request/realtime commanding	Principal investig
object	&#160	Source name
dtcycle	0	&#160
cycle	P	events from which exps? Prim/Second/Both
ra_targ	0.0	Observer's specified target RA [deg]
dec_targ	0.0	Observer's specified target Dec [deg]
ra_nom	165.70857698523	Nominal RA [deg]
dec_nom	33.205831548215	Nominal Dec [deg]
roll_nom	147.53251367965	Nominal Roll [deg]
revision	2	Processing version of data
ontime	6860.7999745011	Sum of GTIs [s]
livetime	6773.9243941462	Livetime [s]
ontime0	6860.7999745011	Sum of GTIs [s]
ontime1	6860.7999745011	Sum of GTIs [s]
ontime2	6860.7999745011	Sum of GTIs [s]
ontime3	6860.1401184201	Sum of GTIs [s]
ontime6	6857.5589741468	Sum of GTIs [s]
ontime7	6860.7999745011	Sum of GTIs [s]
l2events	338109	Number of level 2 events

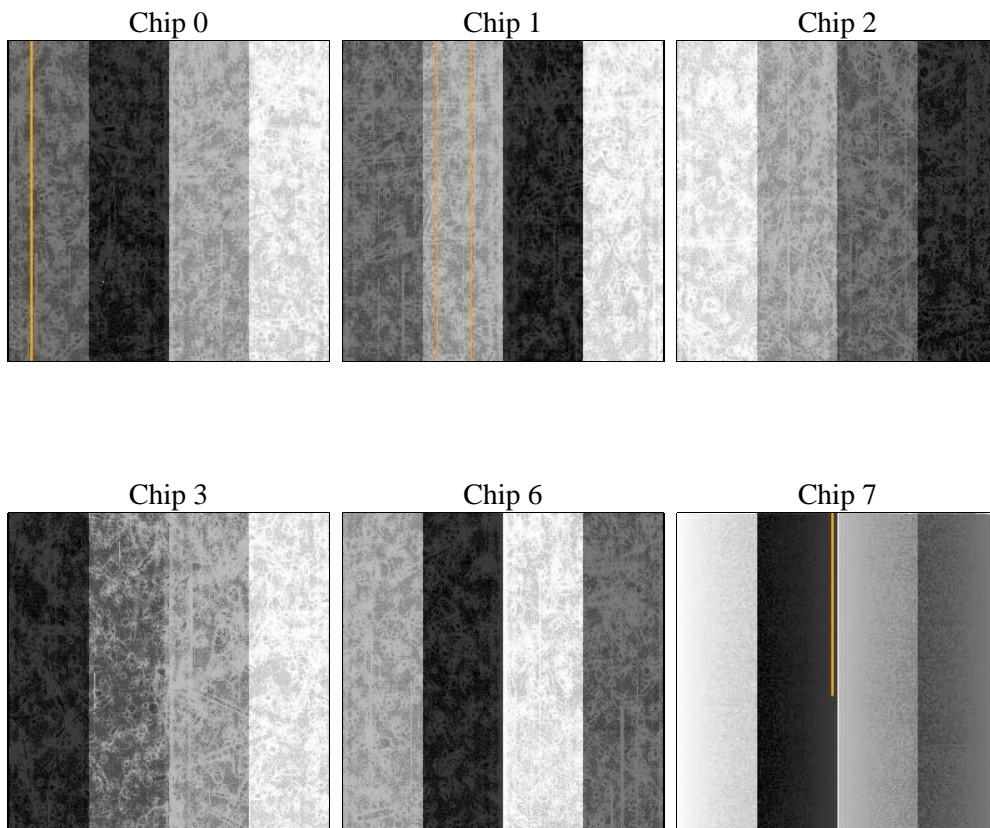
## 2 OBI

### 2.1 OBI

#### 2.1.1 Images



#### 2.1.2 Bias



### 2.1.3 Parameters

obi_num	1	Obi number	sched_exp_time	0.0	[s] Scheduled observation exposure time
ascdsver	8.4.5	Processing system revision	ontime	6860.7999745011	Sum of GTIs [s]
caldsver	4.4.10	&#160	ontime0	6860.7999745011	Sum of GTIs [s]
date	2012-06-21T16:46:09	Date and time of file creation	ontime1	6860.7999745011	Sum of GTIs [s]
revision	2	Processing version of data	ontime2	6860.7999745011	Sum of GTIs [s]
			ontime3	6860.1401184201	Sum of GTIs [s]
			ontime6	6857.5589741468	Sum of GTIs [s]
			ontime7	6860.7999745011	Sum of GTIs [s]
			l1events	727121	Number of level 1 events

### 2.1.4 Events

	ccd 0	ccd 1	ccd 2	ccd 3	ccd 6	ccd 7		ccd 0	ccd 1	ccd 2	ccd 3	ccd 6	ccd 7
level 1 events	113531	113080	118104	117722	120828	143856	grade 0 events	28461	27518	29420	29945	27247	14175
rejected events	59591	58279	64347	63095	65372	59080		25%	24%	24%	25%	22%	9%
rejected %	52%	51%	54%	53%	54%	41%	grade 1 events	165	167	226	249	150	120
								0%	0%	0%	0%	0%	0%
							grade 2 events	9893	11548	9123	9232	11593	18772
								8%	10%	7%	7%	9%	13%
							grade 3 events	3638	3410	3712	3661	3508	7400
								3%	3%	3%	3%	2%	5%
							grade 4 events	3550	3509	3631	3802	3473	7162
								3%	3%	3%	3%	2%	4%
							grade 5 events	3162	3153	3080	3611	3213	8925
								2%	2%	2%	3%	2%	6%
							grade 6 events	8429	8841	7904	7987	9659	37299
								7%	7%	6%	6%	7%	25%
							grade 7 events	56233	54934	61008	59235	61985	50003
								49%	48%	51%	50%	51%	34%

## 2.2 Compared Parameters

Parameter	Planned	Actual	Parameter	Planned	Actual
Instrument	ACIS	ACIS	Obspar format version number	7	7
Detector	ACIS-012367	ACIS-012367	Obspar file type	PREDICTED	ACTUAL
Grating	NONE	NONE	Obspar update status	NONE	UPDATED
Data mode	FAINT	FAINT	Number of optional ACIS chips dropped	0	0
Observation mode	SECONDARY	SECONDARY	On-chip summing requested	N	N
[deg] Pointing RA	0	165.7085769852262	Subarray requested	NONE	NONE
[deg] Pointing Dec	0	33.20583154821528	Alternating exposures requested	N	N
[deg] Pointing Roll	0.0	147.5325136796488	[s] Primary exposure time	3.2	3.2
[mm] SIM focus pos	-1.429586	-0.6828225247311905			
[mm] SIM defocus	0.1037507710433287	0.8505141146731063			
[mm] SIM translation stage pos	250.455976	250.466033080201			
[mm] SIM translation stage offset	0	-0.01005468664627074			
[s] Observation start time (MET)	382944506.614557	382944505.58955			
Observation start date	2010-02-19T05:28:27	2010-02-19T05:28:25			
[s] Observation end time (MET)	382953094.064993	382953093.03998			
Observation end date	2010-02-19T07:51:34	2010-02-19T07:51:33			
Read mode	TIMED	TIMED			

## **2.3 Star Slots**

## **2.4 FID Slots**

## A Summary

### A.1 Status

V&V Scientist	Beth Sundheim
V&V Date (YYYY-MM-DD)	2012.06.28
V&V Edition	1
V&V Disposition and Status	OK
V&V Charge Time	6.8607999745011

### A.2 Comments