

V&V Reference Report

L2 ASCDS Version : 8.4.5

Observation 56355 - L2 Version 2
Chandra X-Ray Center

L2 Processing Date : Jun 23 2012

Contents

1	Front	2
2	OBI	3
2.1	OBI	3
2.1.1	Images	3
2.1.2	Bias	3
2.1.3	Parameters	4
2.1.4	Events	4
2.2	Compared Parameters	5
2.3	Star Slots	6
2.4	FID Slots	6
A	Summary	7
A.1	Status	7
A.2	Comments	7

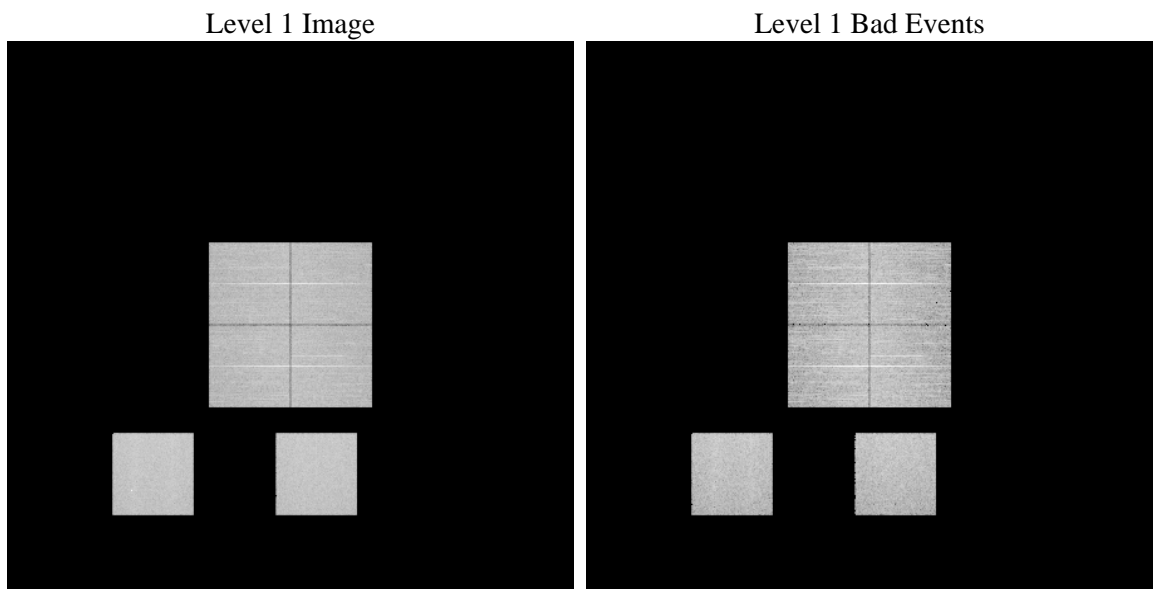
1 Front

seq_num	 	Sequence number
obs_id	56355	Observation id
title	ACIS-012357 diagnostics	Proposal title
observer	CHANDRA engineering request/realtime commanding	Principal investig
object	 	Source name
dtcycle	0	
cycle	P	events from which exps? Prim/Second/Both
ra_targ	0.0	Observer's specified target RA [deg]
dec_targ	0.0	Observer's specified target Dec [deg]
ra_nom	190.52839102465	Nominal RA [deg]
dec_nom	-29.485439080662	Nominal Dec [deg]
roll_nom	357.62949472991	Nominal Roll [deg]
revision	2	Processing version of data
ontime	8382.776329875	Sum of GTIs [s]
livetime	8276.6285684842	Livetime [s]
ontime0	8382.7352898717	Sum of GTIs [s]
ontime1	8382.6942498684	Sum of GTIs [s]
ontime2	8382.6532098651	Sum of GTIs [s]
ontime3	8382.8173698783	Sum of GTIs [s]
ontime5	8382.6121698618	Sum of GTIs [s]
ontime7	8382.776329875	Sum of GTIs [s]
l2events	439874	Number of level 2 events

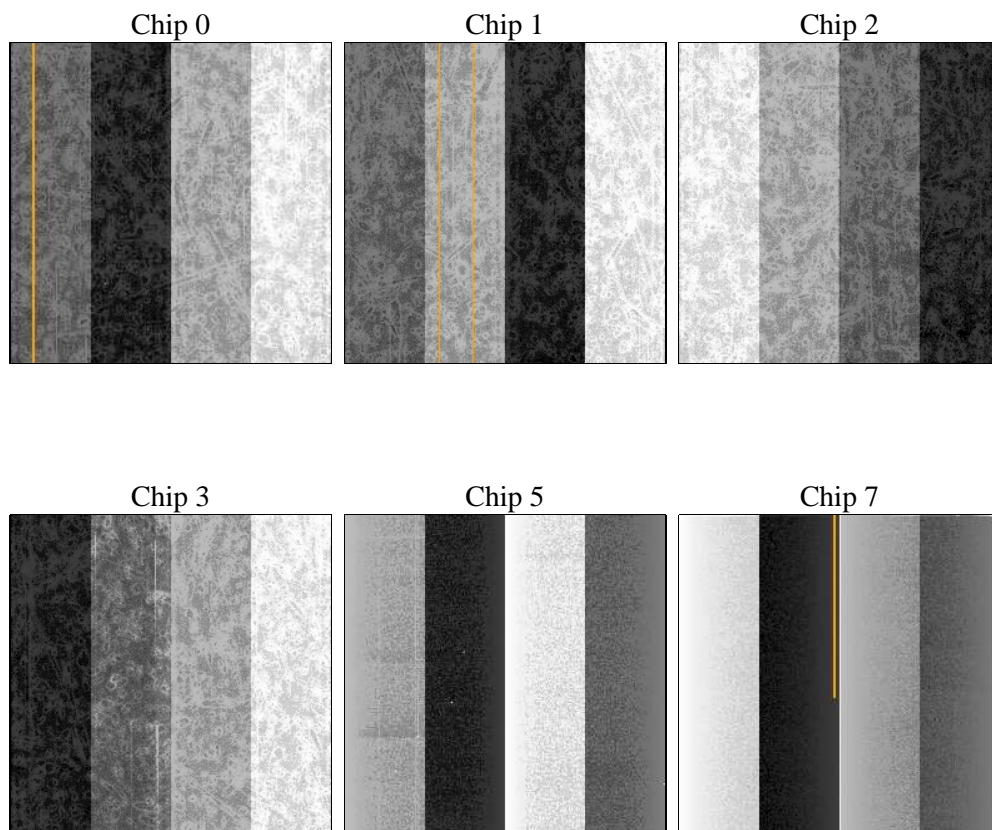
2 OBI

2.1 OBI

2.1.1 Images



2.1.2 Bias



2.1.3 Parameters

obi_num	0	Obi number	sched_exp_time	0.0	[s] Scheduled observation exposure time
ascdsver	8.4.5	Processing system revision	ontime	8382.776329875	Sum of GTIs [s]
caldsver	4.4.10	 	ontime0	8382.7352898717	Sum of GTIs [s]
date	2012-06-23T19:44:49	Date and time of file creation	ontime1	8382.6942498684	Sum of GTIs [s]
revision	2	Processing version of data	ontime2	8382.6532098651	Sum of GTIs [s]
			ontime3	8382.8173698783	Sum of GTIs [s]
			ontime5	8382.6121698618	Sum of GTIs [s]
			ontime7	8382.776329875	Sum of GTIs [s]
			l1events	875170	Number of level 1 events

2.1.4 Events

	ccd 0	ccd 1	ccd 2	ccd 3	ccd 5	ccd 7		ccd 0	ccd 1	ccd 2	ccd 3	ccd 5	ccd 7
level 1 events	133658	130826	134406	135537	171715	169028	grade 0 events	34883	33338	35618	36134	10928	17487
rejected events	68555	65319	69804	69790	71844	69028		26%	25%	26%	26%	6%	10%
rejected %	51%	49%	51%	51%	41%	40%	grade 1 events	220	192	258	260	201	116
								0%	0%	0%	0%	0%	0%
							grade 2 events	12044	13652	11008	11423	37618	22145
								9%	10%	8%	8%	21%	13%
							grade 3 events	4445	4376	4333	4483	3792	8788
								3%	3%	3%	3%	2%	5%
							grade 4 events	4275	4138	4577	4504	3576	8600
								3%	3%	3%	3%	2%	5%
							grade 5 events	3825	3889	3607	4164	8260	10204
								2%	2%	2%	3%	4%	6%
							grade 6 events	10071	10606	9686	9809	44863	43908
								7%	8%	7%	7%	26%	25%
							grade 7 events	63895	60635	65319	64760	62477	57780
								47%	46%	48%	47%	36%	34%

2.2 Compared Parameters

Parameter	Planned	Actual	Parameter	Planned	Actual
Instrument	ACIS	ACIS	Obspar format version number	7	7
Detector	ACIS-012357	ACIS-012357	Obspar file type	PREDICTED	ACTUAL
Grating	NONE	NONE	Obspar update status	NONE	UPDATED
Data mode	FAINT	FAINT	Number of optional ACIS chips dropped	0	0
Observation mode	SECONDARY	SECONDARY	On-chip summing requested	N	N
[deg] Pointing RA	0	190.528391024649	Subarray requested	NONE	NONE
[deg] Pointing Dec	0	-29.48543908066195	Alternating exposures requested	N	N
[deg] Pointing Roll	0.0	357.6294947299106	[s] Primary exposure time	3.2	3.2
[mm] SIM focus pos	-1.429586	-0.7809083437167272			
[mm] SIM defocus	0.1037507710433287	0.7524282956875696			
[mm] SIM translation stage pos	250.455976	250.466033080201			
[mm] SIM translation stage offset	0	-0.01005468664627074			
[s] Observation start time (MET)	386599013.100003	386599012.075			
Observation start date	2010-04-02T12:36:53	2010-04-02T12:36:52			
[s] Observation end time (MET)	386611159.35062	386611158.32561			
Observation end date	2010-04-02T15:59:19	2010-04-02T15:59:18			
Read mode	TIMED	TIMED			

2.3 Star Slots

2.4 FID Slots

A Summary

A.1 Status

V&V Scientist	Beth Sundheim
V&V Date (YYYY-MM-DD)	2012.06.29
V&V Edition	1
V&V Disposition and Status	OK
V&V Charge Time	8.382776329875

A.2 Comments