

V&V Reference Report

L2 ASCDS Version : 8.4.5

Observation 56353 - L2 Version 2
Chandra X-Ray Center

L2 Processing Date : Jun 23 2012

Contents

1	Front	2
2	OBI	3
2.1	OBI	3
2.1.1	Images	3
2.1.2	Bias	3
2.1.3	Parameters	4
2.1.4	Events	4
2.2	Compared Parameters	5
2.3	Star Slots	6
2.4	FID Slots	6
A	Summary	7
A.1	Status	7
A.2	Comments	7

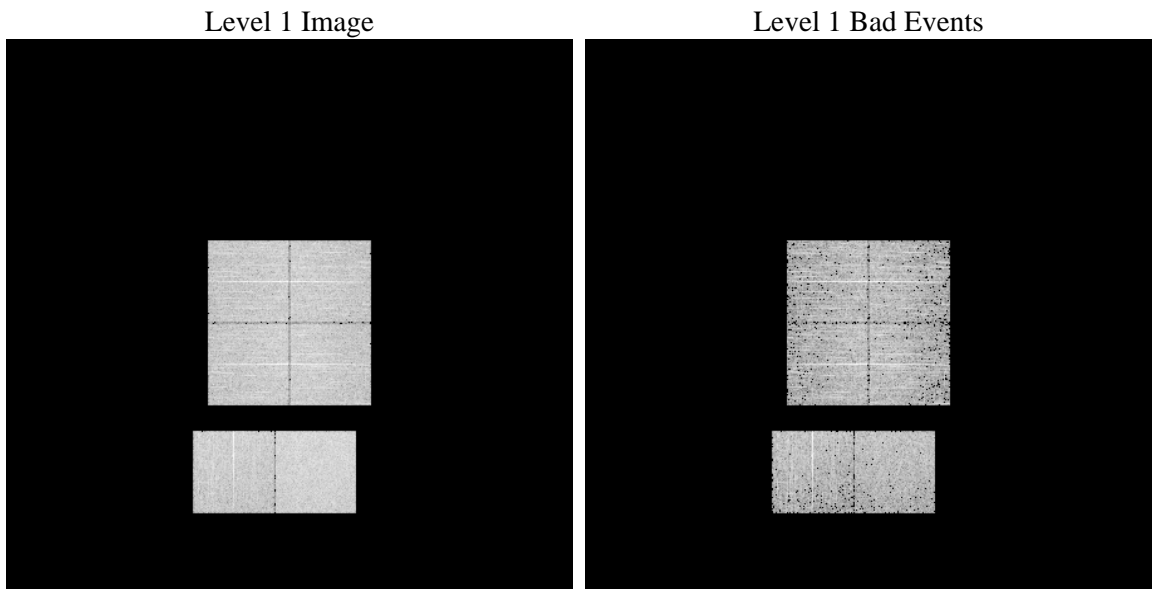
1 Front

seq_num	 	Sequence number
obs_id	56353	Observation id
title	ACIS-012367 diagnostics	Proposal title
observer	CHANDRA engineering request/realtime commanding	Principal investig
object	 	Source name
dtcycle	0	
cycle	P	events from which exps? Prim/Second/Both
ra_targ	0.0	Observer's specified target RA [deg]
dec_targ	0.0	Observer's specified target Dec [deg]
ra_nom	193.54227170452	Nominal RA [deg]
dec_nom	8.5039729374025	Nominal Dec [deg]
roll_nom	180.28231133605	Nominal Roll [deg]
revision	2	Processing version of data
ontime	3282.5432674289	Sum of GTIs [s]
livetime	3240.9777280664	Livetime [s]
ontime0	3282.5022274256	Sum of GTIs [s]
ontime1	3282.4611874223	Sum of GTIs [s]
ontime2	3282.420147419	Sum of GTIs [s]
ontime3	3282.5843074322	Sum of GTIs [s]
ontime6	3282.3791074157	Sum of GTIs [s]
ontime7	3282.5432674289	Sum of GTIs [s]
l2events	159938	Number of level 2 events

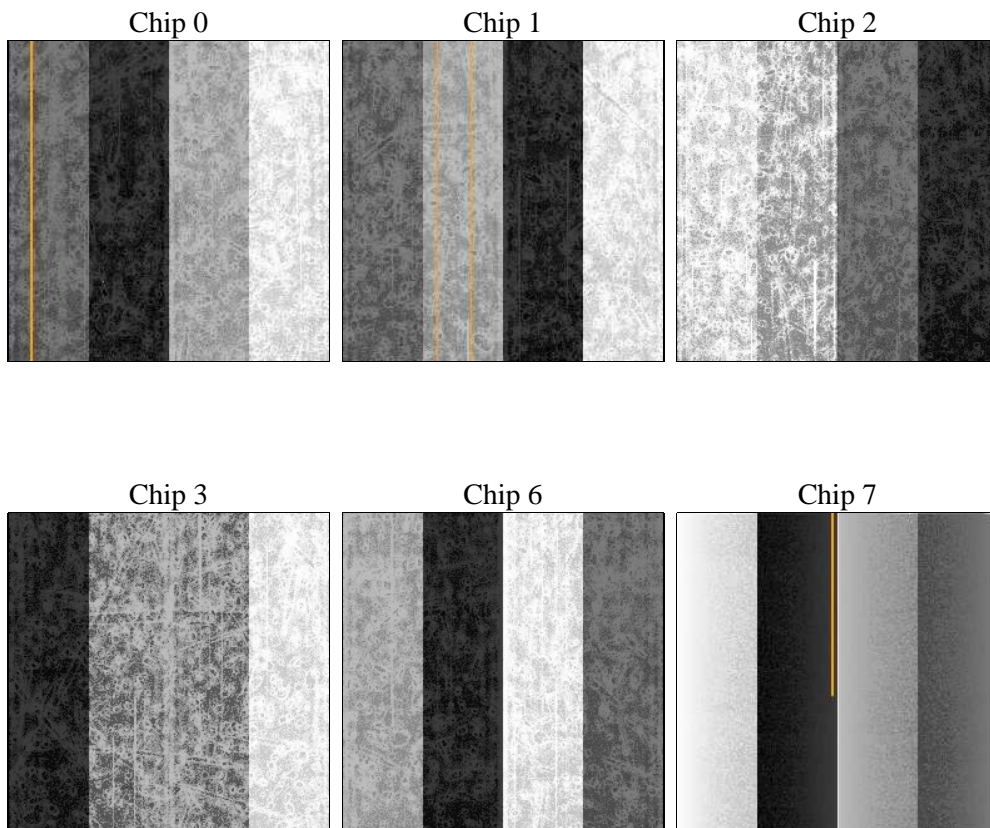
2 OBI

2.1 OBI

2.1.1 Images



2.1.2 Bias



2.1.3 Parameters

obi_num	0	Obi number	sched_exp_time	0.0	[s] Scheduled observation exposure time
ascdsver	8.4.5	Processing system revision	ontime	3282.5432674289	Sum of GTIs [s]
caldsver	4.4.10	 	ontime0	3282.5022274256	Sum of GTIs [s]
date	2012-06-23T20:12:31	Date and time of file creation	ontime1	3282.4611874223	Sum of GTIs [s]
revision	2	Processing version of data	ontime2	3282.420147419	Sum of GTIs [s]
			ontime3	3282.5843074322	Sum of GTIs [s]
			ontime6	3282.3791074157	Sum of GTIs [s]
			ontime7	3282.5432674289	Sum of GTIs [s]
			l1events	326847	Number of level 1 events

2.1.4 Events

	ccd 0	ccd 1	ccd 2	ccd 3	ccd 6	ccd 7		ccd 0	ccd 1	ccd 2	ccd 3	ccd 6	ccd 7
level 1 events	51216	51406	52228	52460	53612	65925	grade 0 events	13697	13350	13774	13974	13895	7162
rejected events	25467	25650	26681	26875	27008	26042		26%	25%	26%	26%	25%	10%
rejected %	49%	49%	51%	51%	50%	39%	grade 1 events	92	84	108	109	100	59
								0%	0%	0%	0%	0%	0%
							grade 2 events	4673	4949	4515	4528	4648	8666
								9%	9%	8%	8%	8%	13%
							grade 3 events	1705	1698	1746	1722	1733	3738
								3%	3%	3%	3%	3%	5%
							grade 4 events	1787	1665	1752	1758	1824	3755
								3%	3%	3%	3%	3%	5%
							grade 5 events	1508	1623	1517	1741	1696	4192
								2%	3%	2%	3%	3%	6%
							grade 6 events	3887	4094	3760	3603	4504	16562
								7%	7%	7%	6%	8%	25%
							grade 7 events	23867	23943	25056	25025	25212	21791
								46%	46%	47%	47%	47%	33%

2.2 Compared Parameters

Parameter	Planned	Actual	Parameter	Planned	Actual
Instrument	ACIS	ACIS	Obspar format version number	7	7
Detector	ACIS-012367	ACIS-012367	Obspar file type	PREDICTED	ACTUAL
Grating	NONE	NONE	Obspar update status	NONE	UPDATED
Data mode	FAINT	FAINT	Number of optional ACIS chips dropped	0	0
Observation mode	SECONDARY	SECONDARY	On-chip summing requested	N	N
[deg] Pointing RA	0	193.5422717045248	Subarray requested	NONE	NONE
[deg] Pointing Dec	0	8.503972937402549	Alternating exposures requested	N	N
[deg] Pointing Roll	0.0	180.2823113360471	[s] Primary exposure time	3.2	3.2
[mm] SIM focus pos	-1.429586	-0.6828225247311905			
[mm] SIM defocus	0.1037507710433287	0.8505141146731063			
[mm] SIM translation stage pos	250.455976	250.466033080201			
[mm] SIM translation stage offset	0	-0.01005468664627074			
[s] Observation start time (MET)	386792570.00984	386792568.98483			
Observation start date	2010-04-04T18:22:50	2010-04-04T18:22:48			
[s] Observation end time (MET)	386797510.510091	386797509.48508			
Observation end date	2010-04-04T19:45:11	2010-04-04T19:45:09			
Read mode	TIMED	TIMED			

2.3 Star Slots

2.4 FID Slots

A Summary

A.1 Status

V&V Scientist	Jen Lauer
V&V Date (YYYY-MM-DD)	2012.06.29
V&V Edition	1
V&V Disposition and Status	OK
V&V Charge Time	3.2825432674289

A.2 Comments