

V&V Reference Report

L2 ASCDS Version : 8.4.5

Observation 56337 - L2 Version 3
Chandra X-Ray Center

L2 Processing Date : Jun 24 2012

Contents

1	Front	2
2	OBI	3
2.1	OBI	3
2.1.1	Images	3
2.1.2	Bias	3
2.1.3	Parameters	4
2.1.4	Events	4
2.2	Compared Parameters	5
2.3	Star Slots	6
2.4	FID Slots	6
A	Summary	7
A.1	Status	7
A.2	Comments	7

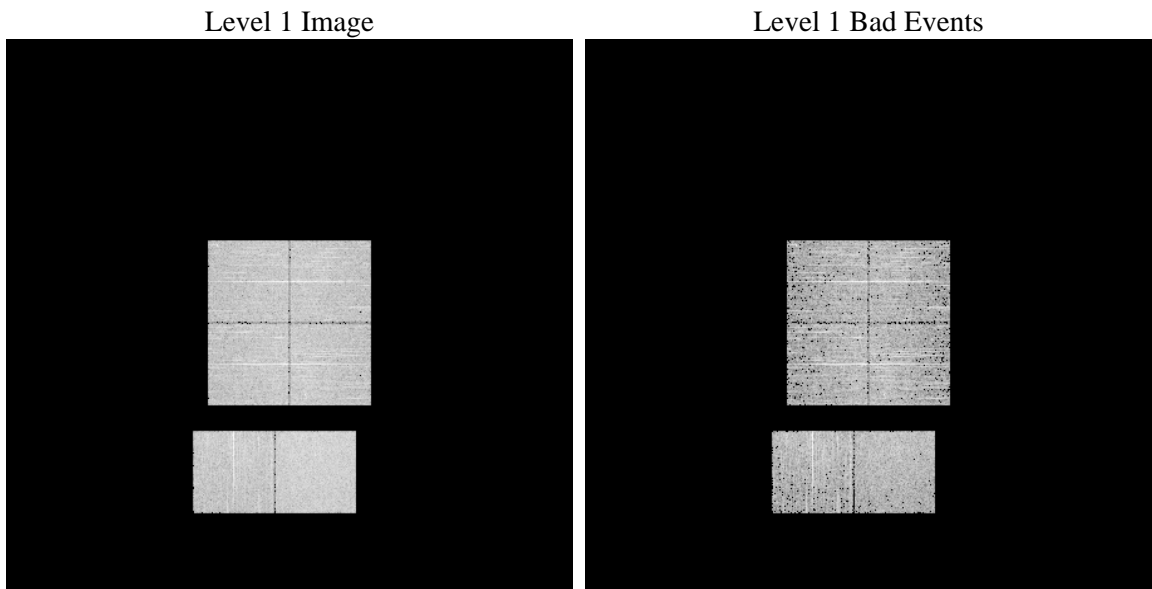
1 Front

seq_num	 	Sequence number
obs_id	56337	Observation id
title	ACIS-012367 diagnostics	Proposal title
observer	CHANDRA engineering request/realtime commanding	Principal investig
object	 	Source name
dtcycle	0	
cycle	P	events from which exps? Prim/Second/Both
ra_targ	0.0	Observer's specified target RA [deg]
dec_targ	0.0	Observer's specified target Dec [deg]
ra_nom	183.99876057604	Nominal RA [deg]
dec_nom	-27.005839991339	Nominal Dec [deg]
roll_nom	315.81336740163	Nominal Roll [deg]
revision	3	Processing version of data
ontime	3283.1999878287	Sum of GTIs [s]
livetime	3241.6261326772	Livetime [s]
ontime0	3283.1999878287	Sum of GTIs [s]
ontime1	3283.1999878287	Sum of GTIs [s]
ontime2	3283.1999878287	Sum of GTIs [s]
ontime3	3283.1999878287	Sum of GTIs [s]
ontime6	3283.1999878287	Sum of GTIs [s]
ontime7	3283.1999878287	Sum of GTIs [s]
l2events	158504	Number of level 2 events

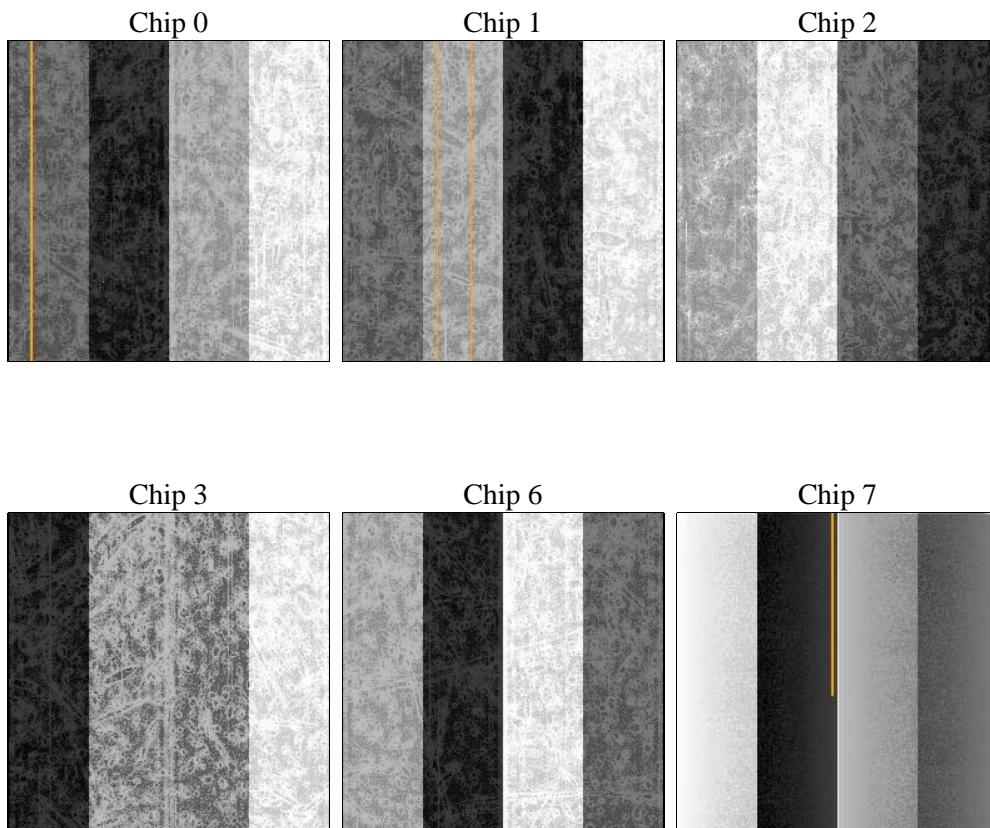
2 OBI

2.1 OBI

2.1.1 Images



2.1.2 Bias



2.1.3 Parameters

obi_num	1	Obi number	sched_exp_time	0.0	[s] Scheduled observation exposure time
ascdsver	8.4.5	Processing system revision	ontime	3283.1999878287	Sum of GTIs [s]
caldsver	4.4.10	 	ontime0	3283.1999878287	Sum of GTIs [s]
date	2012-06-24T08:58:32	Date and time of file creation	ontime1	3283.1999878287	Sum of GTIs [s]
revision	3	Processing version of data	ontime2	3283.1999878287	Sum of GTIs [s]
			ontime3	3283.1999878287	Sum of GTIs [s]
			ontime6	3283.1999878287	Sum of GTIs [s]
			ontime7	3283.1999878287	Sum of GTIs [s]
			l1events	325118	Number of level 1 events

2.1.4 Events

	ccd 0	ccd 1	ccd 2	ccd 3	ccd 6	ccd 7		ccd 0	ccd 1	ccd 2	ccd 3	ccd 6	ccd 7
level 1 events	49989	51398	51761	52684	53715	65571	grade 0 events	13708	13108	13605	14039	13656	7260
rejected events	24261	25961	26397	26954	27439	26309		27%	25%	26%	26%	25%	11%
rejected %	48%	50%	50%	51%	51%	40%	grade 1 events	95	73	87	109	69	68
								0%	0%	0%	0%	0%	0%
							grade 2 events	4697	4792	4445	4604	4607	8458
								9%	9%	8%	8%	8%	12%
							grade 3 events	1691	1756	1791	1676	1765	3447
								3%	3%	3%	3%	3%	5%
							grade 4 events	1683	1704	1771	1667	1799	3637
								3%	3%	3%	3%	3%	5%
							grade 5 events	1471	1515	1409	1678	1663	4204
								2%	2%	2%	3%	3%	6%
							grade 6 events	3966	4095	3772	3768	4473	16499
								7%	7%	7%	7%	8%	25%
							grade 7 events	22678	24355	24881	25143	25683	21998
								45%	47%	48%	47%	47%	33%

2.2 Compared Parameters

Parameter	Planned	Actual	Parameter	Planned	Actual
Instrument	ACIS	ACIS	Obspar format version number	7	7
Detector	ACIS-012367	ACIS-012367	Obspar file type	PREDICTED	ACTUAL
Grating	NONE	NONE	Obspar update status	NONE	UPDATED
Data mode	FAINT	FAINT	Number of optional ACIS chips dropped	0	0
Observation mode	SECONDARY	SECONDARY	On-chip summing requested	N	N
[deg] Pointing RA	0	183.9987605760402	Subarray requested	NONE	NONE
[deg] Pointing Dec	0	-27.00583999133885	Alternating exposures requested	N	N
[deg] Pointing Roll	0.0	315.8133674016264	[s] Primary exposure time	3.2	3.2
[mm] SIM focus pos	-1.429586	-0.7809083437167272			
[mm] SIM defocus	0.1037507710433287	0.7524282956875696			
[mm] SIM translation stage pos	250.455976	250.466033080201			
[mm] SIM translation stage offset	0	-0.01005468664627074			
[s] Observation start time (MET)	387478122.844668	387478121.81967			
Observation start date	2010-04-12T16:48:43	2010-04-12T16:48:41			
[s] Observation end time (MET)	387484383.544986	387484382.51999			
Observation end date	2010-04-12T18:33:04	2010-04-12T18:33:02			
Read mode	TIMED	TIMED			

2.3 Star Slots

2.4 FID Slots

A Summary

A.1 Status

V&V Scientist	Jen Lauer
V&V Date (YYYY-MM-DD)	2012.06.29
V&V Edition	1
V&V Disposition and Status	OK
V&V Charge Time	3.2831999878287

A.2 Comments