

# V&V Reference Report

## L2 ASCDS Version : 8.4.5

Observation 56313 - L2 Version 2  
Chandra X-Ray Center

L2 Processing Date : Jun 24 2012

## Contents

<b>1</b>	<b>Front</b>	<b>2</b>
<b>2</b>	<b>OBI</b>	<b>3</b>
2.1	OBI . . . . .	3
2.1.1	Images . . . . .	3
2.1.2	Bias . . . . .	3
2.1.3	Parameters . . . . .	4
2.1.4	Events . . . . .	4
2.2	Compared Parameters . . . . .	5
2.3	Star Slots . . . . .	6
2.4	FID Slots . . . . .	6
<b>A</b>	<b>Summary</b>	<b>7</b>
A.1	Status . . . . .	7
A.2	Comments . . . . .	7

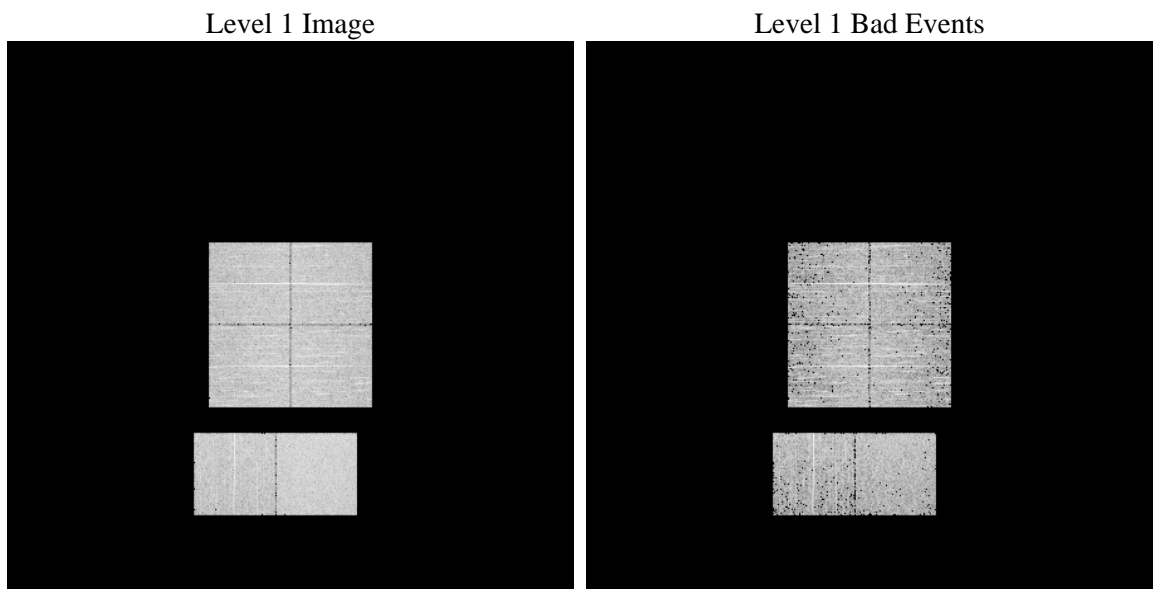
# 1 Front

seq_num	&#160	Sequence number
obs_id	56313	Observation id
title	ACIS-012367 diagnostics	Proposal title
observer	CHANDRA engineering request/realtime commanding	Principal investig
object	&#160	Source name
dtcycle	0	&#160
cycle	P	events from which exps? Prim/Second/Both
ra_targ	0.0	Observer's specified target RA [deg]
dec_targ	0.0	Observer's specified target Dec [deg]
ra_nom	84.059990462854	Nominal RA [deg]
dec_nom	51.974554477071	Nominal Dec [deg]
roll_nom	290.99012659565	Nominal Roll [deg]
revision	2	Processing version of data
ontime	3279.9999878407	Sum of GTIs [s]
livetime	3238.4666530157	Livetime [s]
ontime0	3279.9999878407	Sum of GTIs [s]
ontime1	3279.9999878407	Sum of GTIs [s]
ontime2	3279.9999878407	Sum of GTIs [s]
ontime3	3279.9999878407	Sum of GTIs [s]
ontime6	3279.9999878407	Sum of GTIs [s]
ontime7	3279.9999878407	Sum of GTIs [s]
l2events	158876	Number of level 2 events

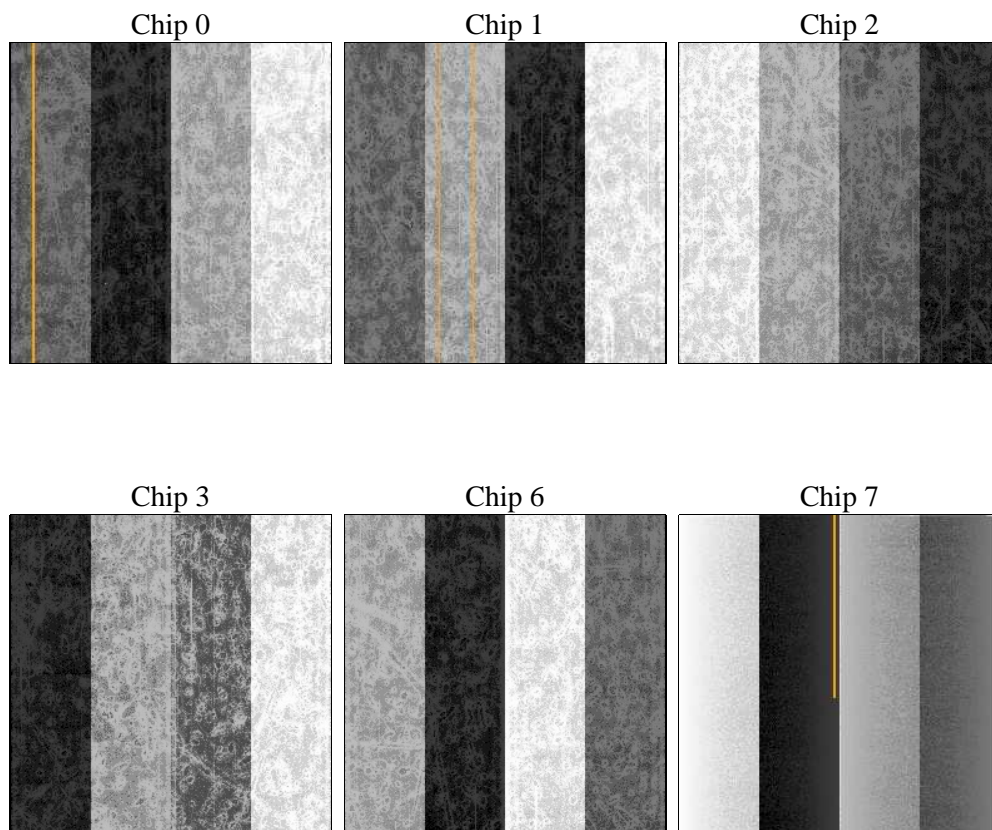
## 2 OBI

### 2.1 OBI

#### 2.1.1 Images



#### 2.1.2 Bias



### 2.1.3 Parameters

obi_num	0	Obi number	sched_exp_time	0.0	[s] Scheduled observation exposure time
ascdsver	8.4.5	Processing system revision	ontime	3279.9999878407	Sum of GTIs [s]
caldbver	4.4.10	&#160	ontime0	3279.9999878407	Sum of GTIs [s]
date	2012-06-24T18:17:15	Date and time of file creation	ontime1	3279.9999878407	Sum of GTIs [s]
revision	2	Processing version of data	ontime2	3279.9999878407	Sum of GTIs [s]
			ontime3	3279.9999878407	Sum of GTIs [s]
			ontime6	3279.9999878407	Sum of GTIs [s]
			ontime7	3279.9999878407	Sum of GTIs [s]
			l1events	324450	Number of level 1 events

### 2.1.4 Events

	ccd 0	ccd 1	ccd 2	ccd 3	ccd 6	ccd 7		ccd 0	ccd 1	ccd 2	ccd 3	ccd 6	ccd 7
level 1 events	50698	50860	53013	52241	51890	65748	grade 0 events	13575	13335	13699	13846	13840	7022
rejected events	25154	25221	27584	26717	25242	26494		26%	26%	25%	26%	26%	10%
rejected %	49%	49%	52%	51%	48%	40%	grade 1 events	92	99	99	92	92	55
								0%	0%	0%	0%	0%	0%
							grade 2 events	4679	4821	4449	4505	4821	8477
								9%	9%	8%	8%	9%	12%
							grade 3 events	1732	1696	1790	1830	1757	3615
								3%	3%	3%	3%	3%	5%
							grade 4 events	1704	1742	1763	1684	1760	3562
								3%	3%	3%	3%	3%	5%
							grade 5 events	1550	1542	1607	1641	1641	4326
								3%	3%	3%	3%	3%	6%
							grade 6 events	3883	4081	3746	3681	4495	16624
								7%	8%	7%	7%	8%	25%
							grade 7 events	23483	23544	25860	24962	23484	22067
								46%	46%	48%	47%	45%	33%

## 2.2 Compared Parameters

Parameter	Planned	Actual
Instrument	ACIS	ACIS
Detector	ACIS-012367	ACIS-012367
Grating	NONE	NONE
Data mode	FAINT	FAINT
Observation mode	SECONDARY	SECONDARY
[deg] Pointing RA	0	84.05999046285378
[deg] Pointing Dec	0	51.97455447707105
[deg] Pointing Roll	0.0	290.9901265956501
[mm] SIM focus pos	-1.429586	-0.6828225247311905
[mm] SIM defocus	0.1037507710433287	0.8505141146731063
[mm] SIM translation stage pos	250.455976	250.466033080201
[mm] SIM translation stage offset	0	-0.01005468664627074
[s] Observation start time (MET)	388163331.279494	388163330.2545
Observation start date	2010-04-20T15:08:51	2010-04-20T15:08:50
[s] Observation end time (MET)	388170053.229836	388170052.20485
Observation end date	2010-04-20T17:00:53	2010-04-20T17:00:52
Read mode	TIMED	TIMED

Parameter	Planned	Actual
Obspar format version number	7	7
Obspar file type	PREDICTED	ACTUAL
Obspar update status	NONE	UPDATED
Number of optional ACIS chips dropped	0	0
On-chip summing requested	N	N
Subarray requested	NONE	NONE
Alternating exposures requested	N	N
[s] Primary exposure time	3.2	3.2

## **2.3 Star Slots**

## **2.4 FID Slots**

## A Summary

### A.1 Status

V&V Scientist	Beth Sundheim
V&V Date (YYYY-MM-DD)	2012.07.01
V&V Edition	1
V&V Disposition and Status	OK
V&V Charge Time	3.2799999878407

### A.2 Comments