

V&V Reference Report

L2 ASCDS Version : 8.4.5

Observation 56287 - L2 Version 2
Chandra X-Ray Center

L2 Processing Date : Jun 25 2012

Contents

1	Front	2
2	OBI	3
2.1	OBI	3
2.1.1	Images	3
2.1.2	Bias	3
2.1.3	Parameters	4
2.1.4	Events	4
2.2	Compared Parameters	5
2.3	Star Slots	6
2.4	FID Slots	6
A	Summary	7
A.1	Status	7
A.2	Comments	7

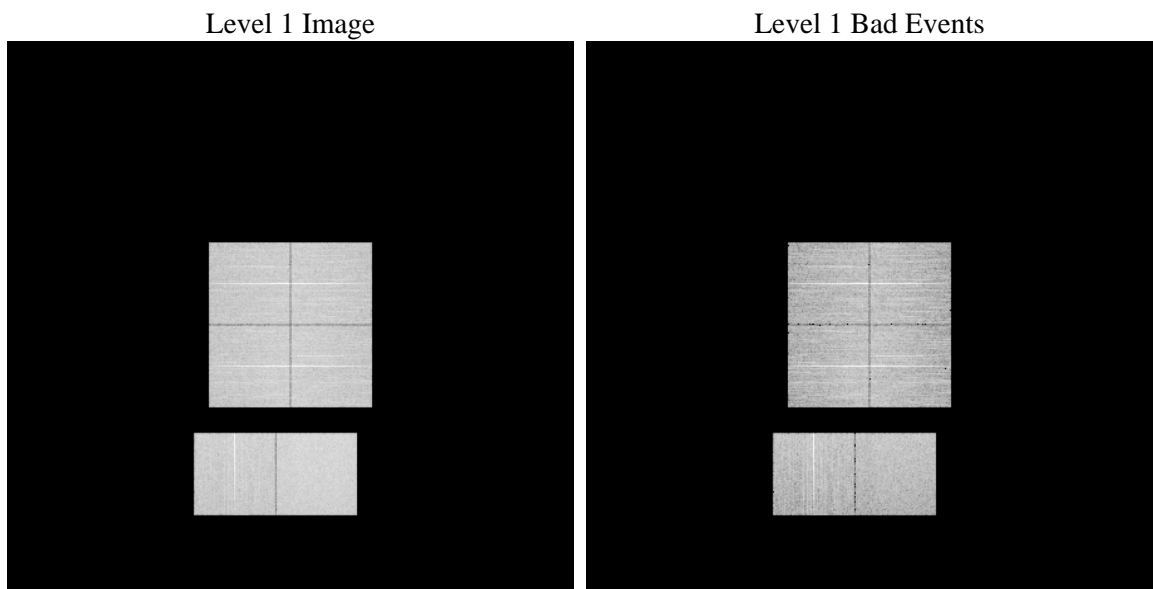
1 Front

seq_num	 	Sequence number
obs_id	56287	Observation id
title	ACIS-012367 diagnostics	Proposal title
observer	CHANDRA engineering request/realtime commanding	Principal investig
object	 	Source name
dtcycle	0	
cycle	P	events from which exps? Prim/Second/Both
ra_targ	0.0	Observer's specified target RA [deg]
dec_targ	0.0	Observer's specified target Dec [deg]
ra_nom	219.03115950049	Nominal RA [deg]
dec_nom	-39.983973713077	Nominal Dec [deg]
roll_nom	1.0970117851549	Nominal Roll [deg]
revision	2	Processing version of data
ontime	8455.8269702196	Sum of GTIs [s]
livetime	8348.754197635	Livetime [s]
ontime0	8455.8269702196	Sum of GTIs [s]
ontime1	8457.0804879069	Sum of GTIs [s]
ontime2	8457.0394479036	Sum of GTIs [s]
ontime3	8455.8269702196	Sum of GTIs [s]
ontime6	8456.9984079003	Sum of GTIs [s]
ontime7	8455.8269702196	Sum of GTIs [s]
l2events	401464	Number of level 2 events

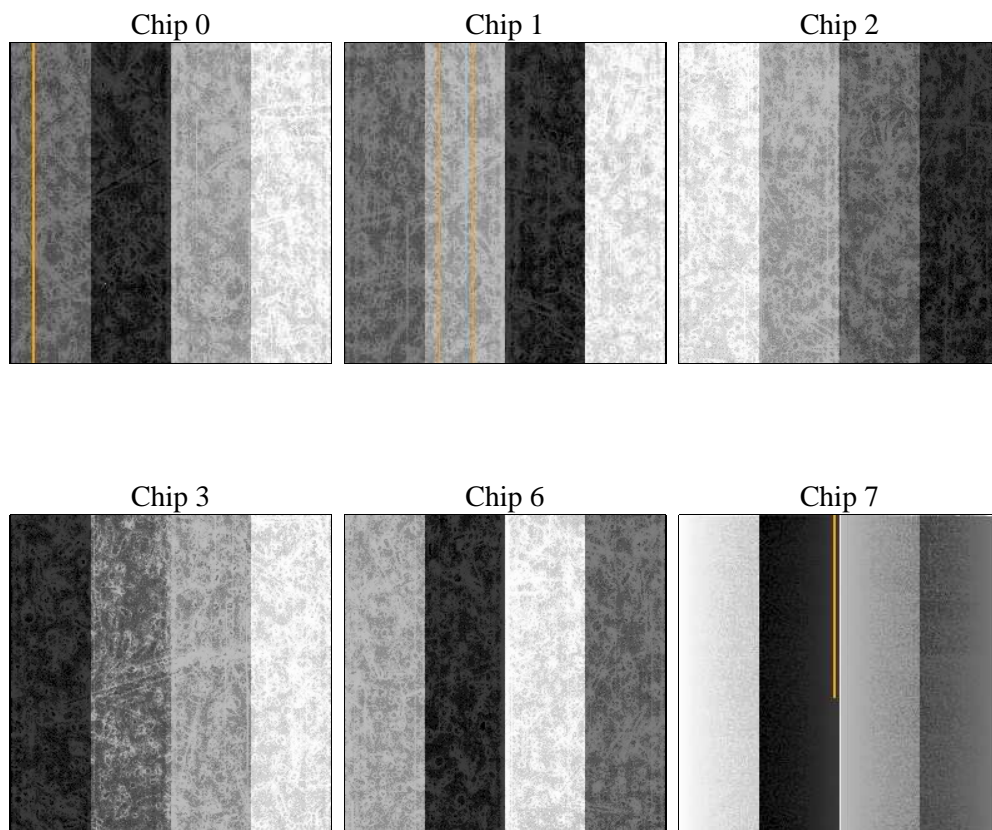
2 OBI

2.1 OBI

2.1.1 Images



2.1.2 Bias



2.1.3 Parameters

obi_num	0	Obi number	sched_exp_time	0.0	[s] Scheduled observation exposure time
ascdsver	8.4.5	Processing system revision	ontime	8455.8269702196	Sum of GTIs [s]
caldsver	4.4.10	 	ontime0	8455.8269702196	Sum of GTIs [s]
date	2012-06-25T10:12:11	Date and time of file creation	ontime1	8457.0804879069	Sum of GTIs [s]
revision	2	Processing version of data	ontime2	8457.0394479036	Sum of GTIs [s]
			ontime3	8455.8269702196	Sum of GTIs [s]
			ontime6	8456.9984079003	Sum of GTIs [s]
			ontime7	8455.8269702196	Sum of GTIs [s]
			l1events	850622	Number of level 1 events

2.1.4 Events

	ccd 0	ccd 1	ccd 2	ccd 3	ccd 6	ccd 7		ccd 0	ccd 1	ccd 2	ccd 3	ccd 6	ccd 7
level 1 events	130911	134543	136626	137824	140809	169909	grade 0 events	33841	31958	34649	35347	32556	16961
rejected events	66627	69541	72790	73029	74503	69857		25%	23%	25%	25%	23%	9%
rejected %	50%	51%	53%	52%	52%	41%	grade 1 events	233	204	259	229	167	123
								0%	0%	0%	0%	0%	0%
							grade 2 events	11992	13999	10946	11058	14134	22100
								9%	10%	8%	8%	10%	13%
							grade 3 events	4212	4103	4312	4409	3890	8612
								3%	3%	3%	3%	2%	5%
							grade 4 events	4242	4163	4403	4394	4008	8313
								3%	3%	3%	3%	2%	4%
							grade 5 events	3778	3781	3559	4169	3836	10321
								2%	2%	2%	3%	2%	6%
							grade 6 events	9997	10821	9552	9587	11750	44066
								7%	8%	6%	6%	8%	25%
							grade 7 events	62616	65514	68946	68631	70468	59413
								47%	48%	50%	49%	50%	34%

2.2 Compared Parameters

Parameter	Planned	Actual	Parameter	Planned	Actual
Instrument	ACIS	ACIS	Obspar format version number	7	7
Detector	ACIS-012367	ACIS-012367	Obspar file type	PREDICTED	ACTUAL
Grating	NONE	NONE	Obspar update status	NONE	UPDATED
Data mode	FAINT	FAINT	Number of optional ACIS chips dropped	0	0
Observation mode	SECONDARY	SECONDARY	On-chip summing requested	N	N
[deg] Pointing RA	0	219.031159500492	Subarray requested	NONE	NONE
[deg] Pointing Dec	0	-39.98397371307742	Alternating exposures requested	N	N
[deg] Pointing Roll	0.0	1.097011785154858	[s] Primary exposure time	3.2	3.2
[mm] SIM focus pos	-1.429586	-0.6828225247311905			
[mm] SIM defocus	0.1037507710433287	0.8505141146731063			
[mm] SIM translation stage pos	250.455976	250.466033080201			
[mm] SIM translation stage offset	0	-0.01005468664627074			
[s] Observation start time (MET)	389111829.42771	389111828.40272			
Observation start date	2010-05-01T14:37:09	2010-05-01T14:37:08			
[s] Observation end time (MET)	389122575.528256	389122574.50326			
Observation end date	2010-05-01T17:36:16	2010-05-01T17:36:14			
Read mode	TIMED	TIMED			

2.3 Star Slots

2.4 FID Slots

A Summary

A.1 Status

V&V Scientist	Jen Lauer
V&V Date (YYYY-MM-DD)	2012.07.02
V&V Edition	1
V&V Disposition and Status	OK
V&V Charge Time	8.4558269702196

A.2 Comments