

# V&V Reference Report

## L2 ASCDS Version : 8.4.5

Observation 56275 - L2 Version 2  
Chandra X-Ray Center

L2 Processing Date : Jun 25 2012

## Contents

<b>1</b>	<b>Front</b>	<b>2</b>
<b>2</b>	<b>OBI</b>	<b>3</b>
2.1	OBI . . . . .	3
2.1.1	Images . . . . .	3
2.1.2	Bias . . . . .	3
2.1.3	Parameters . . . . .	4
2.1.4	Events . . . . .	4
2.2	Compared Parameters . . . . .	5
2.3	Star Slots . . . . .	6
2.4	FID Slots . . . . .	6
<b>A</b>	<b>Summary</b>	<b>7</b>
A.1	Status . . . . .	7
A.2	Comments . . . . .	7

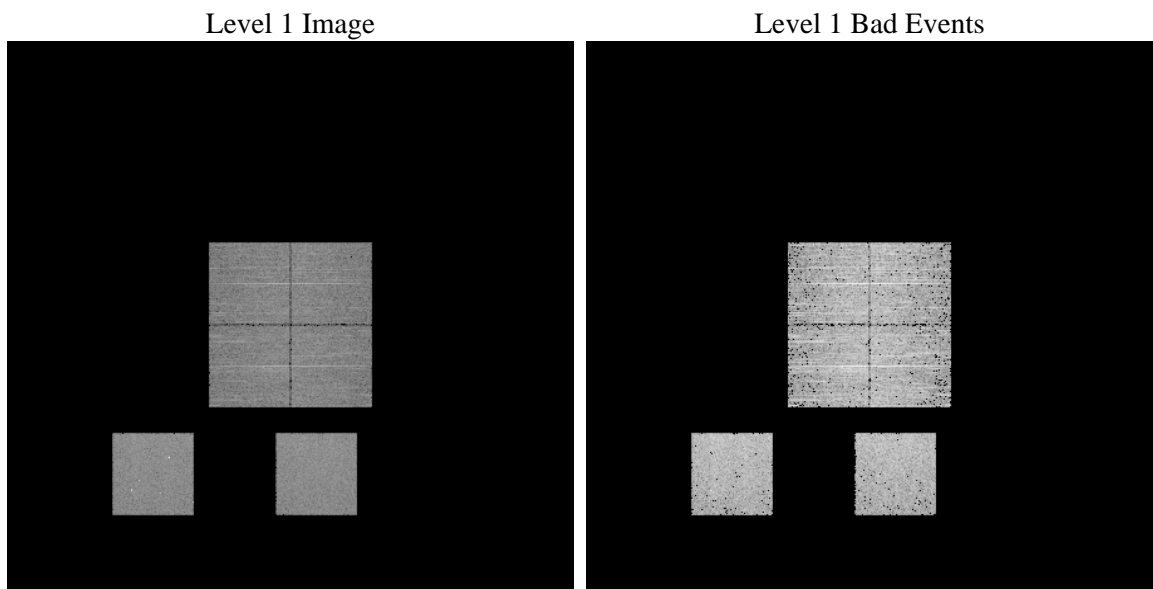
# 1 Front

seq_num	&#160	Sequence number
obs_id	56275	Observation id
title	ACIS-012357 diagnostics	Proposal title
observer	CHANDRA engineering request/realtime commanding	Principal investig
object	&#160	Source name
dtcycle	0	&#160
cycle	P	events from which exps? Prim/Second/Both
ra_targ	0.0	Observer's specified target RA [deg]
dec_targ	0.0	Observer's specified target Dec [deg]
ra_nom	219.14164368959	Nominal RA [deg]
dec_nom	6.0756019550896	Nominal Dec [deg]
roll_nom	195.76428277316	Nominal Roll [deg]
revision	2	Processing version of data
ontime	3279.9999878407	Sum of GTIs [s]
livetime	3238.4666530157	Livetime [s]
ontime0	3279.9999878407	Sum of GTIs [s]
ontime1	3279.9999878407	Sum of GTIs [s]
ontime2	3279.9999878407	Sum of GTIs [s]
ontime3	3279.9999878407	Sum of GTIs [s]
ontime5	3279.9999878407	Sum of GTIs [s]
ontime7	3279.9999878407	Sum of GTIs [s]
l2events	170303	Number of level 2 events

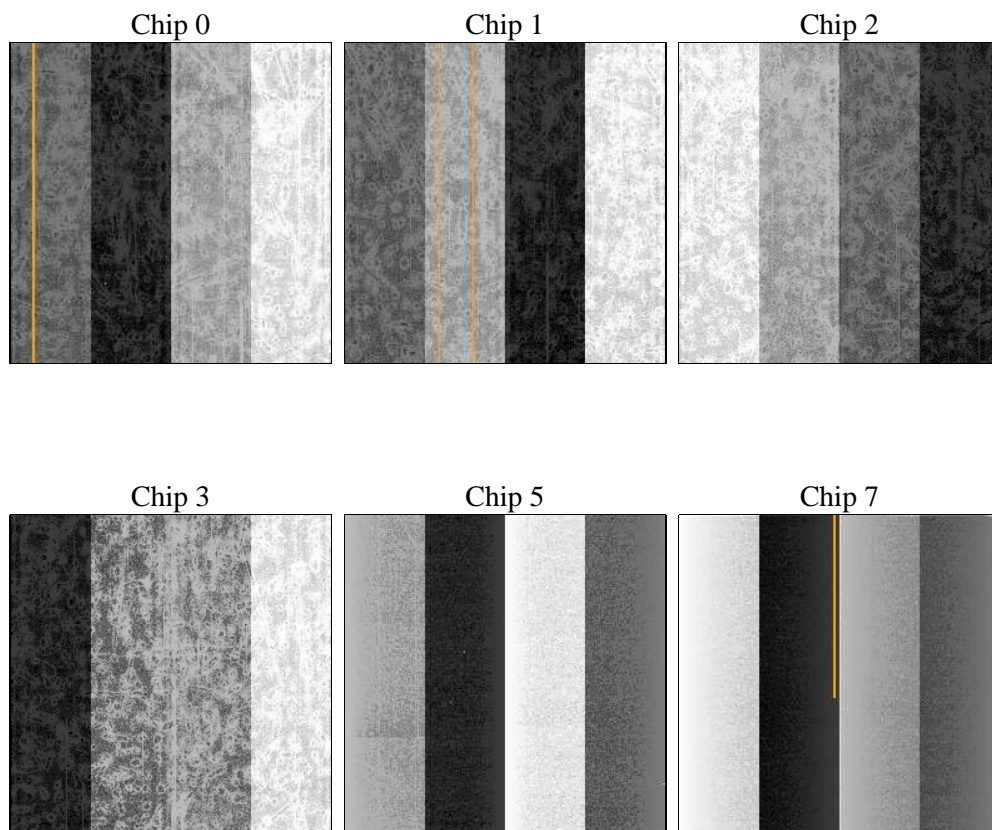
## 2 OBI

### 2.1 OBI

#### 2.1.1 Images



#### 2.1.2 Bias



### 2.1.3 Parameters

obi_num	0	Obi number	sched_exp_time	0.0	[s] Scheduled observation exposure time
ascdsver	8.4.5	Processing system revision	ontime	3279.9999878407	Sum of GTIs [s]
caldsver	4.4.10	&#160	ontime0	3279.9999878407	Sum of GTIs [s]
date	2012-06-25T12:30:43	Date and time of file creation	ontime1	3279.9999878407	Sum of GTIs [s]
revision	2	Processing version of data	ontime2	3279.9999878407	Sum of GTIs [s]
			ontime3	3279.9999878407	Sum of GTIs [s]
			ontime5	3279.9999878407	Sum of GTIs [s]
			ontime7	3279.9999878407	Sum of GTIs [s]
			l1events	335550	Number of level 1 events

### 2.1.4 Events

	ccd 0	ccd 1	ccd 2	ccd 3	ccd 5	ccd 7		ccd 0	ccd 1	ccd 2	ccd 3	ccd 5	ccd 7
level 1 events	50265	50608	51393	52023	66311	64950	grade 0 events	13495	13234	13607	13712	6277	7029
rejected events	25125	25172	26283	26653	26424	25829		26%	26%	26%	26%	9%	10%
rejected %	49%	49%	51%	51%	39%	39%	grade 1 events	73	78	106	109	75	56
								0%	0%	0%	0%	0%	0%
							grade 2 events	4636	4857	4369	4427	13897	8516
								9%	9%	8%	8%	20%	13%
							grade 3 events	1637	1727	1716	1794	1717	3588
								3%	3%	3%	3%	2%	5%
							grade 4 events	1641	1728	1722	1788	1655	3633
								3%	3%	3%	3%	2%	5%
							grade 5 events	1494	1558	1494	1647	3581	4261
								2%	3%	2%	3%	5%	6%
							grade 6 events	3762	3915	3718	3672	16381	16400
								7%	7%	7%	7%	24%	25%
							grade 7 events	23527	23511	24661	24874	22728	21467
								46%	46%	47%	47%	34%	33%

## 2.2 Compared Parameters

Parameter	Planned	Actual	Parameter	Planned	Actual
Instrument	ACIS	ACIS	Obspar format version number	7	7
Detector	ACIS-012357	ACIS-012357	Obspar file type	PREDICTED	ACTUAL
Grating	NONE	NONE	Obspar update status	NONE	UPDATED
Data mode	FAINT	FAINT	Number of optional ACIS chips dropped	0	0
Observation mode	SECONDARY	SECONDARY	On-chip summing requested	N	N
[deg] Pointing RA	0	219.141643689589	Subarray requested	NONE	NONE
[deg] Pointing Dec	0	6.075601955089621	Alternating exposures requested	N	N
[deg] Pointing Roll	0.0	195.7642827731641	[s] Primary exposure time	3.2	3.2
[mm] SIM focus pos	-1.429586	-0.6828225247311905			
[mm] SIM defocus	0.1037507710433287	0.8505141146731063			
[mm] SIM translation stage pos	250.455976	250.466033080201			
[mm] SIM translation stage offset	0	-0.01005468664627074			
[s] Observation start time (MET)	389766212.011003	389766210.986			
Observation start date	2010-05-09T04:23:32	2010-05-09T04:23:30			
[s] Observation end time (MET)	389771166.861256	389771165.83625			
Observation end date	2010-05-09T05:46:07	2010-05-09T05:46:05			
Read mode	TIMED	TIMED			

## 2.3 Star Slots

## 2.4 FID Slots

## **A Summary**

### **A.1 Status**

V&V Scientist	Jen Lauer
V&V Date (YYYY-MM-DD)	2012.07.02
V&V Edition	1
V&V Disposition and Status	OK
V&V Charge Time	3.2799999878407

### **A.2 Comments**