

V&V Reference Report

L2 ASCDS Version : 8.4.5

Observation 56271 - L2 Version 2
Chandra X-Ray Center

L2 Processing Date : Jun 25 2012

Contents

1	Front	2
2	OBI	3
2.1	OBI	3
2.1.1	Images	3
2.1.2	Bias	3
2.1.3	Parameters	4
2.1.4	Events	4
2.2	Compared Parameters	5
2.3	Star Slots	6
2.4	FID Slots	6
A	Summary	7
A.1	Status	7
A.2	Comments	7

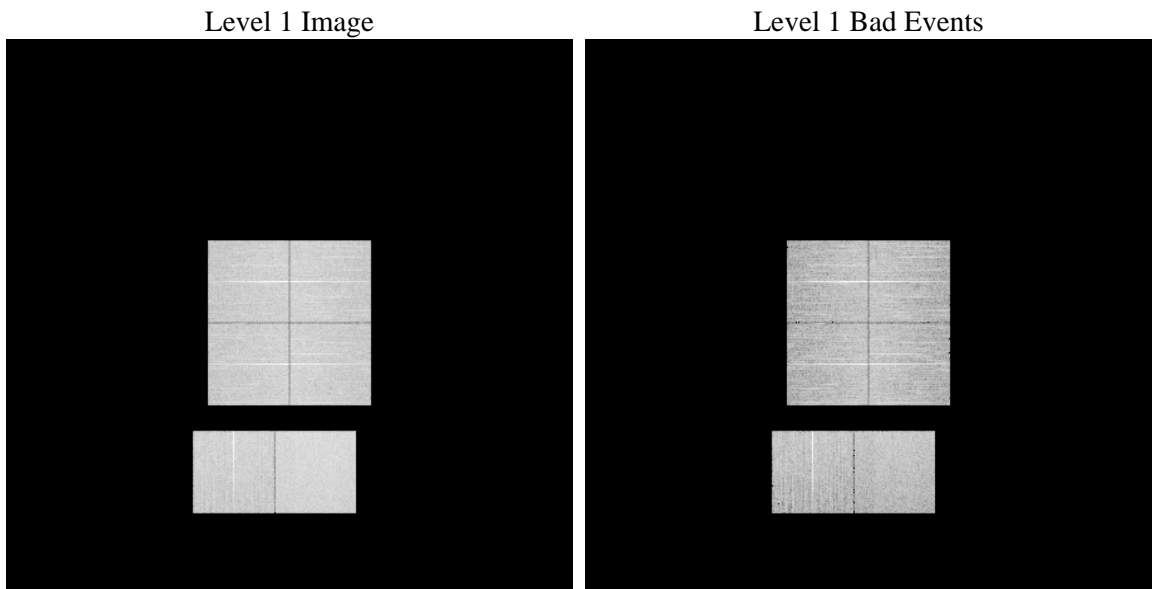
1 Front

seq_num	 	Sequence number
obs_id	56271	Observation id
title	ACIS-012367 diagnostics	Proposal title
observer	CHANDRA engineering request/realtime commanding	Principal investig
object	 	Source name
dtcycle	0	
cycle	P	events from which exps? Prim/Second/Both
ra_targ	0.0	Observer's specified target RA [deg]
dec_targ	0.0	Observer's specified target Dec [deg]
ra_nom	218.03648648838	Nominal RA [deg]
dec_nom	-42.987461506912	Nominal Dec [deg]
roll_nom	342.34036913168	Nominal Roll [deg]
revision	2	Processing version of data
ontime	8431.999968648	Sum of GTIs [s]
livetime	8325.2289079041	Livetime [s]
ontime0	8431.999968648	Sum of GTIs [s]
ontime1	8431.999968648	Sum of GTIs [s]
ontime2	8431.999968648	Sum of GTIs [s]
ontime3	8431.999968648	Sum of GTIs [s]
ontime6	8431.999968648	Sum of GTIs [s]
ontime7	8431.999968648	Sum of GTIs [s]
l2events	401381	Number of level 2 events

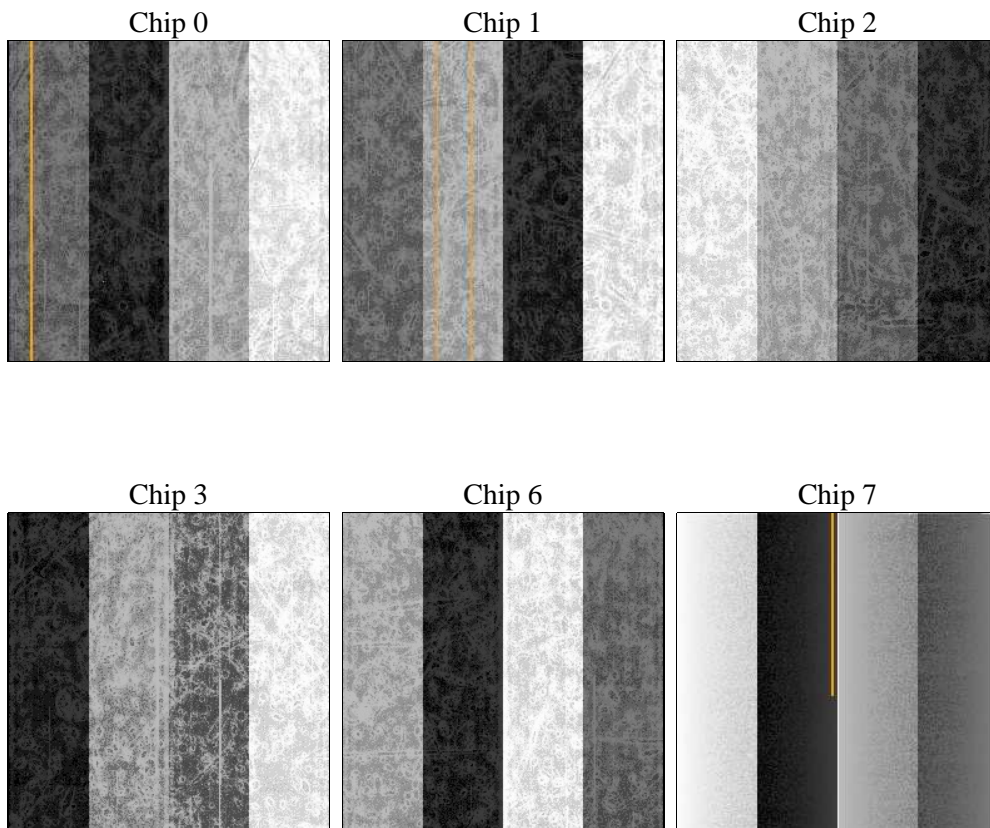
2 OBI

2.1 OBI

2.1.1 Images



2.1.2 Bias



2.1.3 Parameters

obi_num	0	Obi number	sched_exp_time	0.0	[s] Scheduled observation exposure time
ascdsver	8.4.5	Processing system revision	ontime	8431.999968648	Sum of GTIs [s]
caldsver	4.4.10	 	ontime0	8431.999968648	Sum of GTIs [s]
date	2012-06-25T12:41:37	Date and time of file creation	ontime1	8431.999968648	Sum of GTIs [s]
revision	2	Processing version of data	ontime2	8431.999968648	Sum of GTIs [s]
			ontime3	8431.999968648	Sum of GTIs [s]
			ontime6	8431.999968648	Sum of GTIs [s]
			ontime7	8431.999968648	Sum of GTIs [s]
			l1events	831519	Number of level 1 events

2.1.4 Events

	ccd 0	ccd 1	ccd 2	ccd 3	ccd 6	ccd 7		ccd 0	ccd 1	ccd 2	ccd 3	ccd 6	ccd 7
level 1 events	128590	133070	131177	134766	136598	167318	grade 0 events	34016	33508	34956	35403	34869	17703
rejected events	64805	68277	66615	69665	69715	67869		26%	25%	26%	26%	25%	10%
rejected %	50%	51%	50%	51%	51%	40%	grade 1 events	255	200	258	251	199	140
								0%	0%	0%	0%	0%	0%
							grade 2 events	11585	12690	11292	11378	12062	21720
								9%	9%	8%	8%	8%	12%
							grade 3 events	4362	4235	4502	4501	4347	9136
								3%	3%	3%	3%	3%	5%
							grade 4 events	4274	4347	4408	4540	4346	8827
								3%	3%	3%	3%	3%	5%
							grade 5 events	3901	4068	3715	4201	4097	10548
								3%	3%	2%	3%	2%	6%
							grade 6 events	9798	10227	9619	9500	11469	42421
								7%	7%	7%	7%	8%	25%
							grade 7 events	60399	63795	62427	64992	65209	56823
								46%	47%	47%	48%	47%	33%

2.2 Compared Parameters

Parameter	Planned	Actual	Parameter	Planned	Actual
Instrument	ACIS	ACIS	Obspar format version number	7	7
Detector	ACIS-012367	ACIS-012367	Obspar file type	PREDICTED	ACTUAL
Grating	NONE	NONE	Obspar update status	NONE	UPDATED
Data mode	FAINT	FAINT	Number of optional ACIS chips dropped	0	0
Observation mode	SECONDARY	SECONDARY	On-chip summing requested	N	N
[deg] Pointing RA	0	218.0364864883767	Subarray requested	NONE	NONE
[deg] Pointing Dec	0	-42.98746150691178	Alternating exposures requested	N	N
[deg] Pointing Roll	0.0	342.3403691316841	[s] Primary exposure time	3.2	3.2
[mm] SIM focus pos	-1.429586	-0.6828225247311905			
[mm] SIM defocus	0.1037507710433287	0.8505141146731063			
[mm] SIM translation stage pos	250.455976	250.466033080201			
[mm] SIM translation stage offset	0	-0.01005468664627074			
[s] Observation start time (MET)	389795881.662513	389795880.63751			
Observation start date	2010-05-09T12:38:02	2010-05-09T12:38:00			
[s] Observation end time (MET)	389808513.763156	389808512.73816			
Observation end date	2010-05-09T16:08:34	2010-05-09T16:08:32			
Read mode	TIMED	TIMED			

2.3 Star Slots

2.4 FID Slots

A Summary

A.1 Status

V&V Scientist	Jen Lauer
V&V Date (YYYY-MM-DD)	2012.07.02
V&V Edition	1
V&V Disposition and Status	OK
V&V Charge Time	8.431999968648

A.2 Comments