

# V&V Reference Report

## L2 ASCDS Version : 8.4.5

Observation 56269 - L2 Version 2  
Chandra X-Ray Center

L2 Processing Date : Jun 25 2012

## Contents

<b>1</b>	<b>Front</b>	<b>2</b>
<b>2</b>	<b>OBI</b>	<b>3</b>
2.1	OBI . . . . .	3
2.1.1	Images . . . . .	3
2.1.2	Bias . . . . .	3
2.1.3	Parameters . . . . .	4
2.1.4	Events . . . . .	4
2.2	Compared Parameters . . . . .	5
2.3	Star Slots . . . . .	6
2.4	FID Slots . . . . .	6
<b>A</b>	<b>Summary</b>	<b>7</b>
A.1	Status . . . . .	7
A.2	Comments . . . . .	7

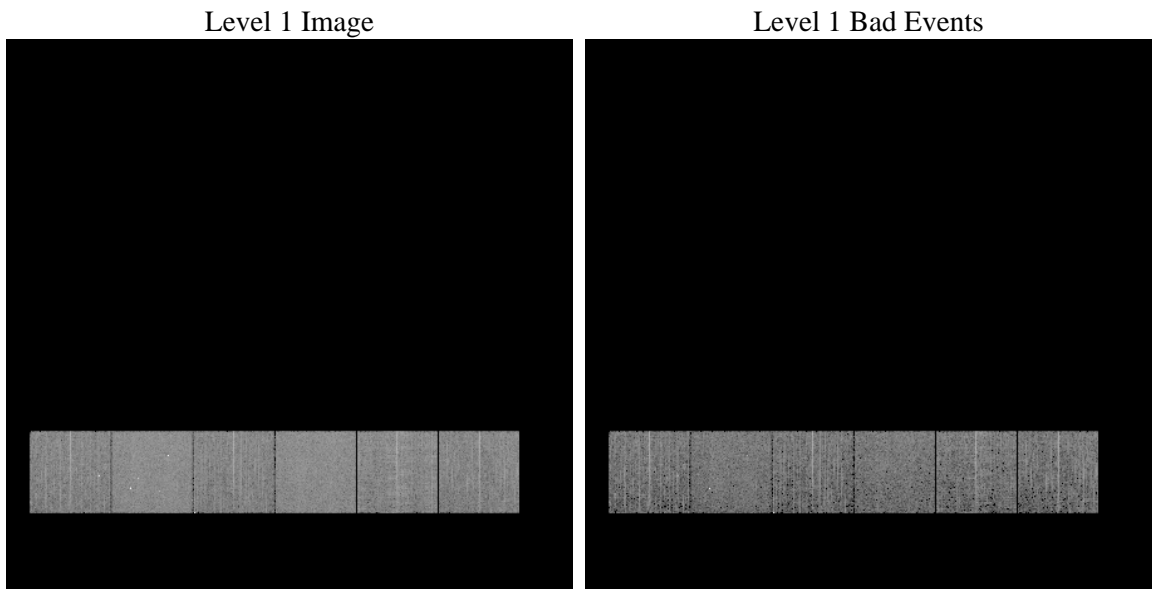
# 1 Front

seq_num	&#160	Sequence number
obs_id	56269	Observation id
title	ACIS-456789 diagnostics	Proposal title
observer	CHANDRA engineering request/realtime commanding	Principal investig
object	&#160	Source name
dtcycle	0	&#160
cycle	P	events from which exps? Prim/Second/Both
ra_targ	0.0	Observer's specified target RA [deg]
dec_targ	0.0	Observer's specified target Dec [deg]
ra_nom	255.48949176786	Nominal RA [deg]
dec_nom	-26.972751396667	Nominal Dec [deg]
roll_nom	75.815754533522	Nominal Roll [deg]
revision	2	Processing version of data
ontime	3055.4556246996	Sum of GTIs [s]
livetime	3016.7656058051	Livetime [s]
ontime4	3055.3325046897	Sum of GTIs [s]
ontime5	3055.4145846963	Sum of GTIs [s]
ontime6	3055.373544693	Sum of GTIs [s]
ontime7	3055.4556246996	Sum of GTIs [s]
ontime8	3055.2914646864	Sum of GTIs [s]
ontime9	3055.4966647029	Sum of GTIs [s]
l2events	159430	Number of level 2 events

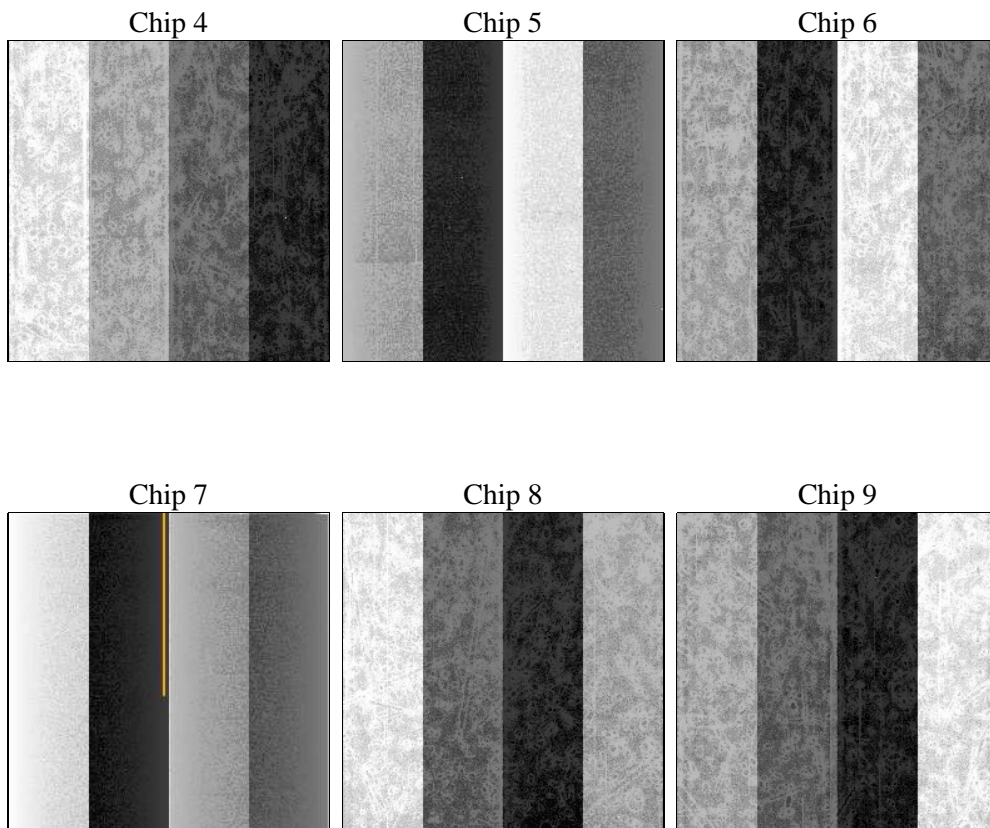
## 2 OBI

### 2.1 OBI

#### 2.1.1 Images



#### 2.1.2 Bias



### 2.1.3 Parameters

obi_num	0	Obi number	sched_exp_time	0.0	[s] Scheduled observation exposure time
ascdsver	8.4.5	Processing system revision	ontime	3055.4556246996	Sum of GTIs [s]
caldsver	4.4.10	&#160	ontime4	3055.3325046897	Sum of GTIs [s]
date	2012-06-25T14:33:21	Date and time of file creation	ontime5	3055.4145846963	Sum of GTIs [s]
revision	2	Processing version of data	ontime6	3055.373544693	Sum of GTIs [s]
			ontime7	3055.4556246996	Sum of GTIs [s]
			ontime8	3055.2914646864	Sum of GTIs [s]
			ontime9	3055.4966647029	Sum of GTIs [s]
			l1events	361501	Number of level 1 events

### 2.1.4 Events

	ccd 4	ccd 5	ccd 6	ccd 7	ccd 8	ccd 9		ccd 4	ccd 5	ccd 6	ccd 7	ccd 8	ccd 9
level 1 events	55068	69359	55429	65662	61406	54577	grade 0 events	14432	6074	13459	6905	15331	13356
rejected events	31604	31272	31423	29281	31930	30940		26%	8%	24%	10%	24%	24%
rejected %	57%	45%	56%	44%	51%	56%	grade 1 events	118	69	74	59	113	98
								0%	0%	0%	0%	0%	0%
							grade 2 events	4003	14252	4603	8389	5910	4519
								7%	20%	8%	12%	9%	8%
							grade 3 events	1733	1754	1669	3597	2302	1778
								3%	2%	3%	5%	3%	3%
							grade 4 events	1765	1673	1658	3562	2268	1664
								3%	2%	2%	5%	3%	3%
							grade 5 events	1497	4309	1649	4226	2068	1845
								2%	6%	2%	6%	3%	3%
							grade 6 events	3318	17143	4382	16579	5700	3976
								6%	24%	7%	25%	9%	7%
							grade 7 events	28202	24085	27935	22345	27714	27341
								51%	34%	50%	34%	45%	50%

## 2.2 Compared Parameters

Parameter	Planned	Actual
Instrument	ACIS	ACIS
Detector	ACIS-456789	ACIS-456789
Grating	NONE	NONE
Data mode	FAINT	FAINT
Observation mode	SECONDARY	SECONDARY
[deg] Pointing RA	0	255.4894917678641
[deg] Pointing Dec	0	-26.9727513966666
[deg] Pointing Roll	0.0	75.815754533522
[mm] SIM focus pos	-0.78090834371673	-0.78090834371673
[mm] SIM defocus	0.7524282194390134	0.7524282194390134
[mm] SIM translation stage pos	250.4660330802	250.4660330802
[mm] SIM translation stage offset	-0.01005726120527584	-0.01005726120527584
[s] Observation start time (MET)	389993276.17256	389993276.17256
Observation start date	2010-05-11T19:27:56	2010-05-11T19:27:56
[s] Observation end time (MET)	389997825.404612	389997825.404612
Observation end date	2010-05-11T20:43:45	2010-05-11T20:43:45
Read mode	TIMED	TIMED

Parameter	Planned	Actual
Obspar format version number	7	7
Obspar file type	PREDICTED	ACTUAL
Obspar update status	OVERRIDE	OVERRIDE
Number of optional ACIS chips dropped	0	0
On-chip summing requested	N	N
Subarray requested	NONE	NONE
Alternating exposures requested	N	N
[s] Primary exposure time	3.2	3.2

## 2.3 Star Slots

## 2.4 FID Slots

## **A Summary**

### **A.1 Status**

V&V Scientist	Jen Lauer
V&V Date (YYYY-MM-DD)	2012.07.02
V&V Edition	1
V&V Disposition and Status	OK
V&V Charge Time	3.0554556246996

### **A.2 Comments**