

# V&V Reference Report

## L2 ASCDS Version : 8.4.5

Observation 56238 - L2 Version 2  
Chandra X-Ray Center

L2 Processing Date : Jun 26 2012

## Contents

<b>1</b>	<b>Front</b>	<b>2</b>
<b>2</b>	<b>OBI</b>	<b>3</b>
2.1	OBI . . . . .	3
2.1.1	Images . . . . .	3
2.1.2	Bias . . . . .	3
2.1.3	Parameters . . . . .	4
2.1.4	Events . . . . .	4
2.2	Compared Parameters . . . . .	5
2.3	Star Slots . . . . .	6
2.4	FID Slots . . . . .	6
<b>A</b>	<b>Summary</b>	<b>7</b>
A.1	Status . . . . .	7
A.2	Comments . . . . .	7

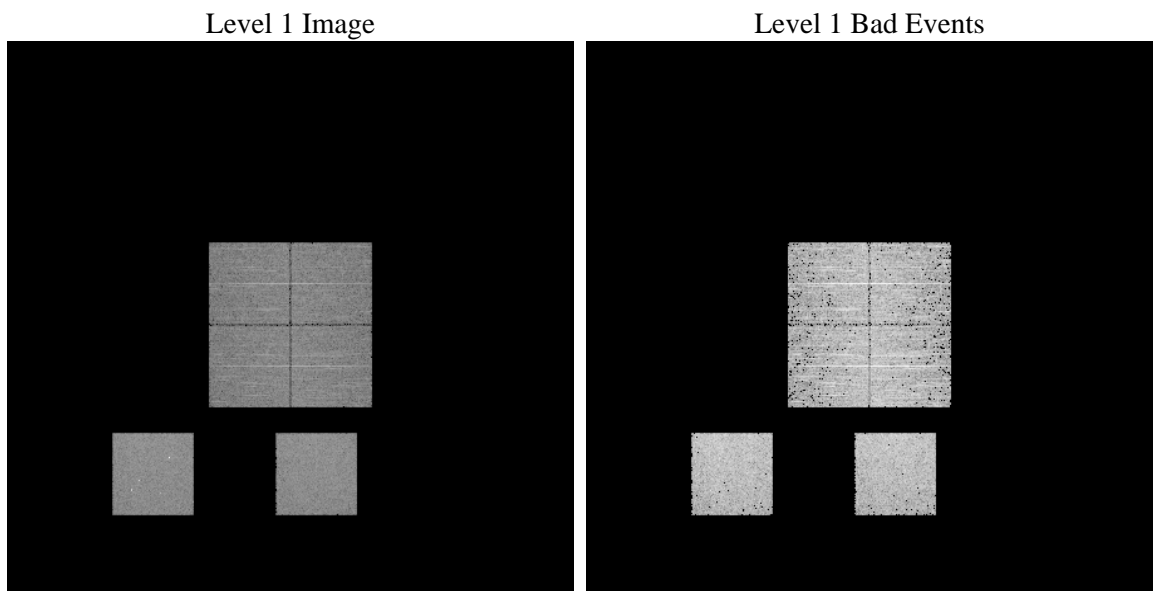
# 1 Front

seq_num	&#160	Sequence number
obs_id	56238	Observation id
title	ACIS-012357 diagnostics	Proposal title
observer	CHANDRA engineering request/realtime commanding	Principal investig
object	&#160	Source name
dtycle	0	&#160
cycle	P	events from which exps? Prim/Second/Both
ra_targ	0.0	Observer's specified target RA [deg]
dec_targ	0.0	Observer's specified target Dec [deg]
ra_nom	232.03077287162	Nominal RA [deg]
dec_nom	-44.996357658559	Nominal Dec [deg]
roll_nom	338.83903154679	Nominal Roll [deg]
revision	2	Processing version of data
ontime	3284.882850647	Sum of GTIs [s]
livetime	3243.2876860731	Livetime [s]
ontime0	3284.8418106437	Sum of GTIs [s]
ontime1	3284.8007706404	Sum of GTIs [s]
ontime2	3284.7597306371	Sum of GTIs [s]
ontime3	3284.9238906503	Sum of GTIs [s]
ontime5	3284.7186906338	Sum of GTIs [s]
ontime7	3284.882850647	Sum of GTIs [s]
l2events	170689	Number of level 2 events

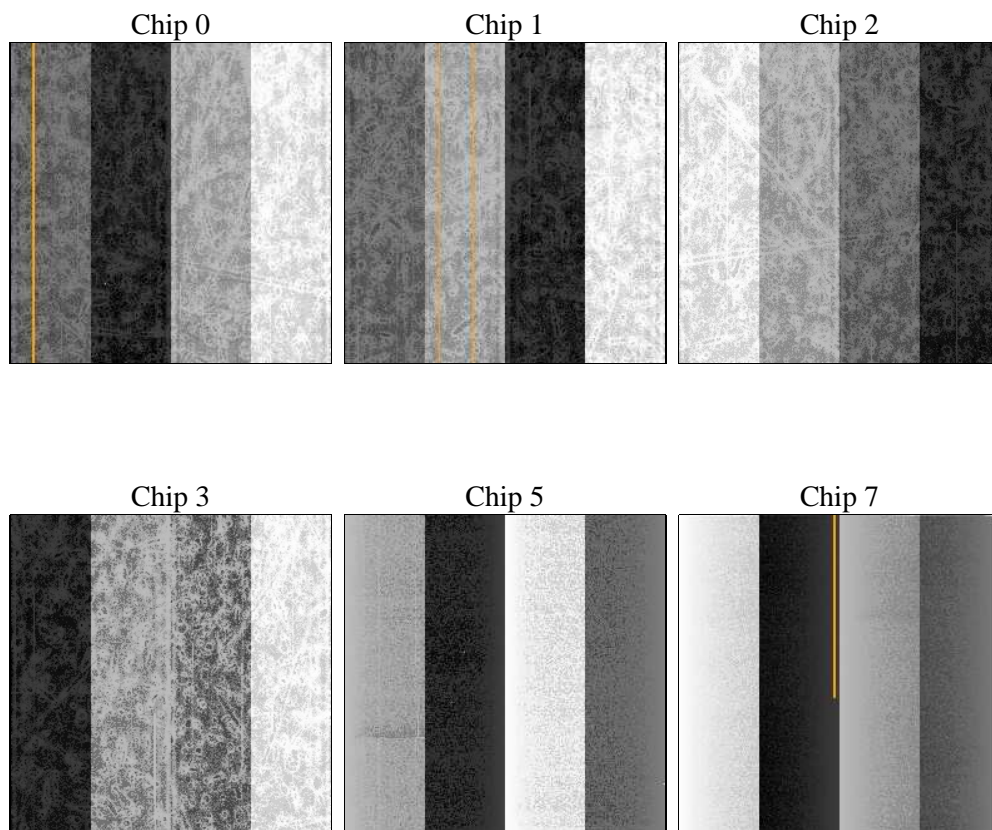
## 2 OBI

### 2.1 OBI

#### 2.1.1 Images



#### 2.1.2 Bias



### 2.1.3 Parameters

obi_num	0	Obi number	sched_exp_time	0.0	[s] Scheduled observation exposure time
ascdsver	8.4.5	Processing system revision	ontime	3284.882850647	Sum of GTIs [s]
caldbver	4.4.10	&#160	ontime0	3284.8418106437	Sum of GTIs [s]
date	2012-06-26T14:05:55	Date and time of file creation	ontime1	3284.8007706404	Sum of GTIs [s]
revision	2	Processing version of data	ontime2	3284.7597306371	Sum of GTIs [s]
			ontime3	3284.9238906503	Sum of GTIs [s]
			ontime5	3284.7186906338	Sum of GTIs [s]
			ontime7	3284.882850647	Sum of GTIs [s]
			l1events	336839	Number of level 1 events

### 2.1.4 Events

	ccd 0	ccd 1	ccd 2	ccd 3	ccd 5	ccd 7		ccd 0	ccd 1	ccd 2	ccd 3	ccd 5	ccd 7
level 1 events	49402	49446	50394	53222	68147	66228	grade 0 events	13226	12933	13518	13689	6495	7104
rejected events	24339	24380	25496	28068	27267	26765		26%	26%	26%	25%	9%	10%
rejected %	49%	49%	50%	52%	40%	40%	grade 1 events	105	73	99	112	66	52
								0%	0%	0%	0%	0%	0%
							grade 2 events	4611	4715	4302	4397	14091	8669
								9%	9%	8%	8%	20%	13%
							grade 3 events	1688	1736	1701	1773	1761	3580
								3%	3%	3%	3%	2%	5%
							grade 4 events	1698	1708	1783	1773	1667	3566
								3%	3%	3%	3%	2%	5%
							grade 5 events	1509	1582	1492	1710	3636	4324
								3%	3%	2%	3%	5%	6%
							grade 6 events	3840	3974	3619	3522	16908	16544
								7%	8%	7%	6%	24%	24%
							grade 7 events	22725	22725	23880	26246	23523	22389
								46%	45%	47%	49%	34%	33%

## 2.2 Compared Parameters

Parameter	Planned	Actual	Parameter	Planned	Actual
Instrument	ACIS	ACIS	Obspar format version number	7	7
Detector	ACIS-012357	ACIS-012357	Obspar file type	PREDICTED	ACTUAL
Grating	NONE	NONE	Obspar update status	NONE	UPDATED
Data mode	FAINT	FAINT	Number of optional ACIS chips dropped	0	0
Observation mode	SECONDARY	SECONDARY	On-chip summing requested	N	N
[deg] Pointing RA	0	232.0307728716224	Subarray requested	NONE	NONE
[deg] Pointing Dec	0	-44.99635765855938	Alternating exposures requested	N	N
[deg] Pointing Roll	0.0	338.8390315467895	[s] Primary exposure time	3.2	3.2
[mm] SIM focus pos	-1.429586	-1.428180813131781			
[mm] SIM defocus	0.1037507710433287	0.1051558262725154			
[mm] SIM translation stage pos	250.455976	250.466033080201			
[mm] SIM translation stage offset	0	-0.01005468664627074			
[s] Observation start time (MET)	391136760.080768	391136759.05576			
Observation start date	2010-05-25T01:06:00	2010-05-25T01:05:59			
[s] Observation end time (MET)	391147647.631322	391147646.60631			
Observation end date	2010-05-25T04:07:28	2010-05-25T04:07:26			
Read mode	TIMED	TIMED			

## **2.3 Star Slots**

## **2.4 FID Slots**

## A Summary

### A.1 Status

V&V Scientist	Jen Lauer
V&V Date (YYYY-MM-DD)	2012.07.03
V&V Edition	1
V&V Disposition and Status	OK
V&V Charge Time	3.284882850647

### A.2 Comments