

V&V Reference Report

L2 ASCDS Version : 8.4.5

Observation 56235 - L2 Version 2
Chandra X-Ray Center

L2 Processing Date : Jun 26 2012

Contents

1	Front	2
2	OBI	3
2.1	OBI	3
2.1.1	Images	3
2.1.2	Bias	3
2.1.3	Parameters	4
2.1.4	Events	4
2.2	Compared Parameters	5
2.3	Star Slots	6
2.4	FID Slots	6
A	Summary	7
A.1	Status	7
A.2	Comments	7

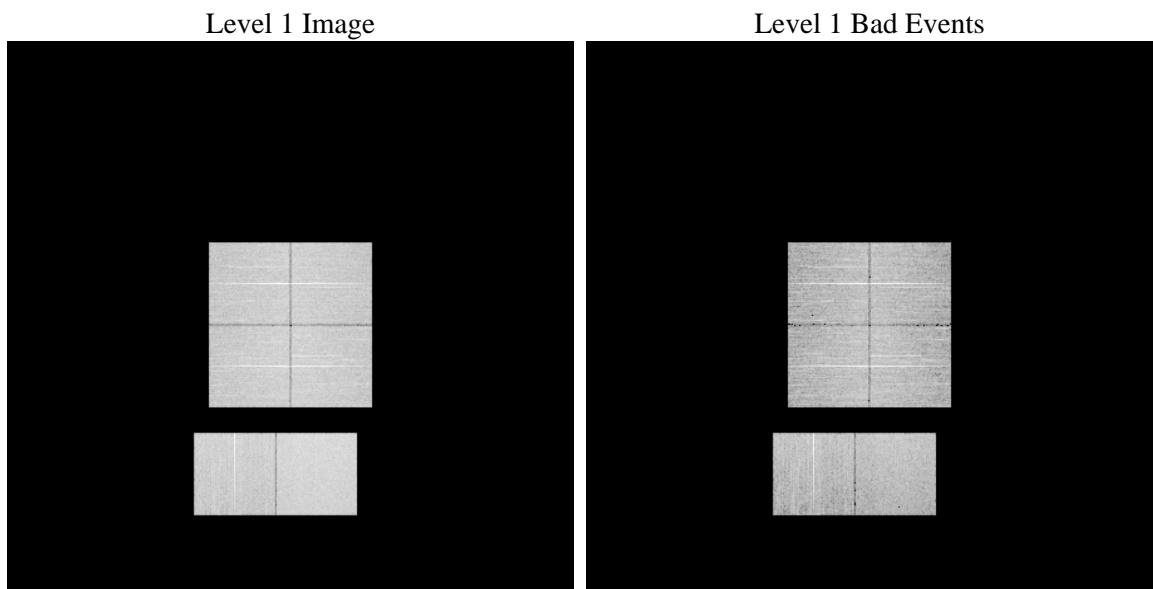
1 Front

seq_num	 	Sequence number
obs_id	56235	Observation id
title	ACIS-012367 diagnostics	Proposal title
observer	CHANDRA engineering request/realtime commanding	Principal investig
object	 	Source name
dtcycle	0	
cycle	P	events from which exps? Prim/Second/Both
ra_targ	0.0	Observer's specified target RA [deg]
dec_targ	0.0	Observer's specified target Dec [deg]
ra_nom	230.04034717184	Nominal RA [deg]
dec_nom	-44.996594546764	Nominal Dec [deg]
roll_nom	333.88674205851	Nominal Roll [deg]
revision	2	Processing version of data
ontime	8278.3999692202	Sum of GTIs [s]
livetime	8173.5738841559	Livetime [s]
ontime0	8278.3999692202	Sum of GTIs [s]
ontime1	8278.3727924824	Sum of GTIs [s]
ontime2	8278.3317524791	Sum of GTIs [s]
ontime3	8278.3999692202	Sum of GTIs [s]
ontime6	8278.2907124758	Sum of GTIs [s]
ontime7	8278.3999692202	Sum of GTIs [s]
l2events	390457	Number of level 2 events

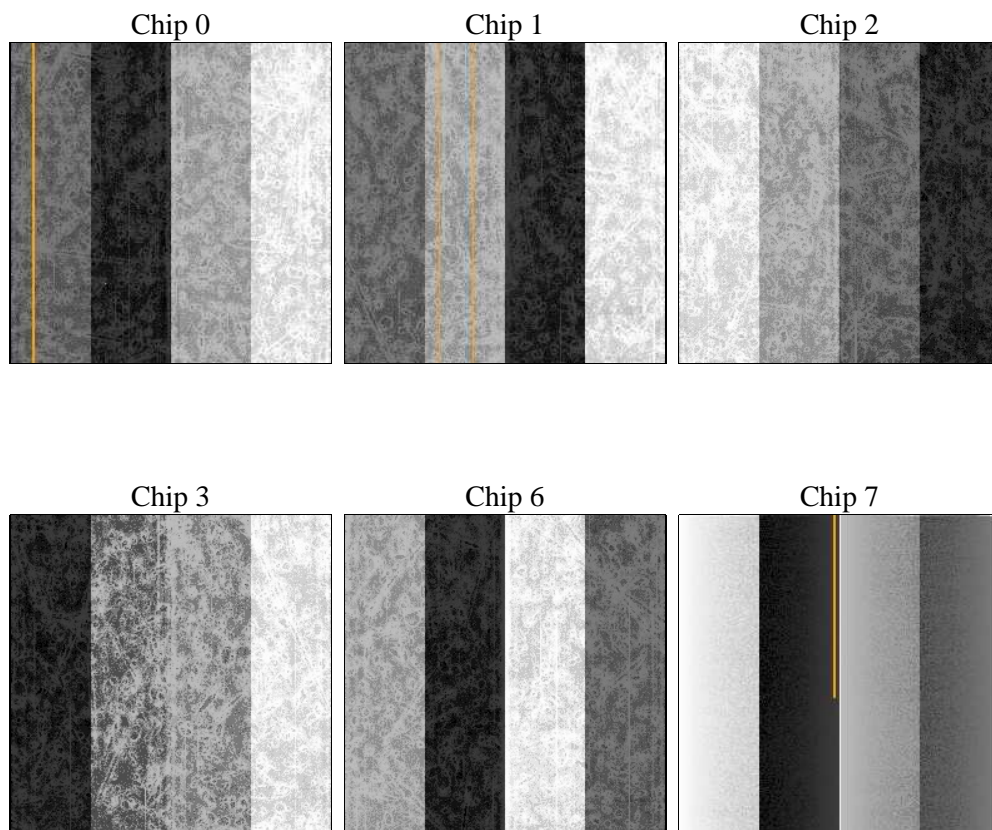
2 OBI

2.1 OBI

2.1.1 Images



2.1.2 Bias



2.1.3 Parameters

obi_num	0	Obi number	sched_exp_time	0.0	[s] Scheduled observation exposure time
ascdsver	8.4.5	Processing system revision	ontime	8278.3999692202	Sum of GTIs [s]
caldsver	4.4.10	 	ontime0	8278.3999692202	Sum of GTIs [s]
date	2012-06-26T14:08:57	Date and time of file creation	ontime1	8278.3727924824	Sum of GTIs [s]
revision	2	Processing version of data	ontime2	8278.3317524791	Sum of GTIs [s]
			ontime3	8278.3999692202	Sum of GTIs [s]
			ontime6	8278.2907124758	Sum of GTIs [s]
			ontime7	8278.3999692202	Sum of GTIs [s]
			l1events	821938	Number of level 1 events

2.1.4 Events

	ccd 0	ccd 1	ccd 2	ccd 3	ccd 6	ccd 7		ccd 0	ccd 1	ccd 2	ccd 3	ccd 6	ccd 7
level 1 events	126989	127970	131890	134395	134616	166078	grade 0 events	32902	32031	33809	34303	33132	16620
rejected events	65040	65096	69881	71202	69669	68157		25%	25%	25%	25%	24%	10%
rejected %	51%	50%	52%	52%	51%	41%	grade 1 events	204	210	262	242	163	139
								0%	0%	0%	0%	0%	0%
							grade 2 events	11323	12549	10619	10927	12454	21666
								8%	9%	8%	8%	9%	13%
							grade 3 events	4159	4072	4291	4329	4140	8682
								3%	3%	3%	3%	3%	5%
							grade 4 events	4055	4066	4241	4417	4100	8438
								3%	3%	3%	3%	3%	5%
							grade 5 events	3886	3876	3733	4281	4097	10485
								3%	3%	2%	3%	3%	6%
							grade 6 events	9537	10176	9074	9236	11145	42544
								7%	7%	6%	6%	8%	25%
							grade 7 events	60923	60990	65861	66660	65385	57504
								47%	47%	49%	49%	48%	34%

2.2 Compared Parameters

Parameter	Planned	Actual	Parameter	Planned	Actual
Instrument	ACIS	ACIS	Obspar format version number	7	7
Detector	ACIS-012367	ACIS-012367	Obspar file type	PREDICTED	ACTUAL
Grating	NONE	NONE	Obspar update status	NONE	UPDATED
Data mode	FAINT	FAINT	Number of optional ACIS chips dropped	0	0
Observation mode	SECONDARY	SECONDARY	On-chip summing requested	N	N
[deg] Pointing RA	0	230.0403471718387	Subarray requested	NONE	NONE
[deg] Pointing Dec	0	-44.99659454676374	Alternating exposures requested	N	N
[deg] Pointing Roll	0.0	333.8867420585054	[s] Primary exposure time	3.2	3.2
[mm] SIM focus pos	-1.429586	-1.428180813131781			
[mm] SIM defocus	0.1037507710433287	0.1051558262725154			
[mm] SIM translation stage pos	250.455976	250.466033080201			
[mm] SIM translation stage offset	0	-0.01005468664627074			
[s] Observation start time (MET)	391168770.832399	391168769.80739			
Observation start date	2010-05-25T09:59:31	2010-05-25T09:59:29			
[s] Observation end time (MET)	391179767.032959	391179766.00795			
Observation end date	2010-05-25T13:02:47	2010-05-25T13:02:46			
Read mode	TIMED	TIMED			

2.3 Star Slots

2.4 FID Slots

A Summary

A.1 Status

V&V Scientist	Jen Lauer
V&V Date (YYYY-MM-DD)	2012.07.03
V&V Edition	1
V&V Disposition and Status	OK
V&V Charge Time	8.2783999692202

A.2 Comments