

V&V Reference Report

L2 ASCDS Version : 8.4.5

Observation 56183 - L2 Version 2
Chandra X-Ray Center

L2 Processing Date : Jun 28 2012

Contents

1	Front	2
2	OBI	3
2.1	OBI	3
2.1.1	Images	3
2.1.2	Bias	3
2.1.3	Parameters	4
2.1.4	Events	4
2.2	Compared Parameters	5
2.3	Star Slots	6
2.4	FID Slots	6
A	Summary	7
A.1	Status	7
A.2	Comments	7

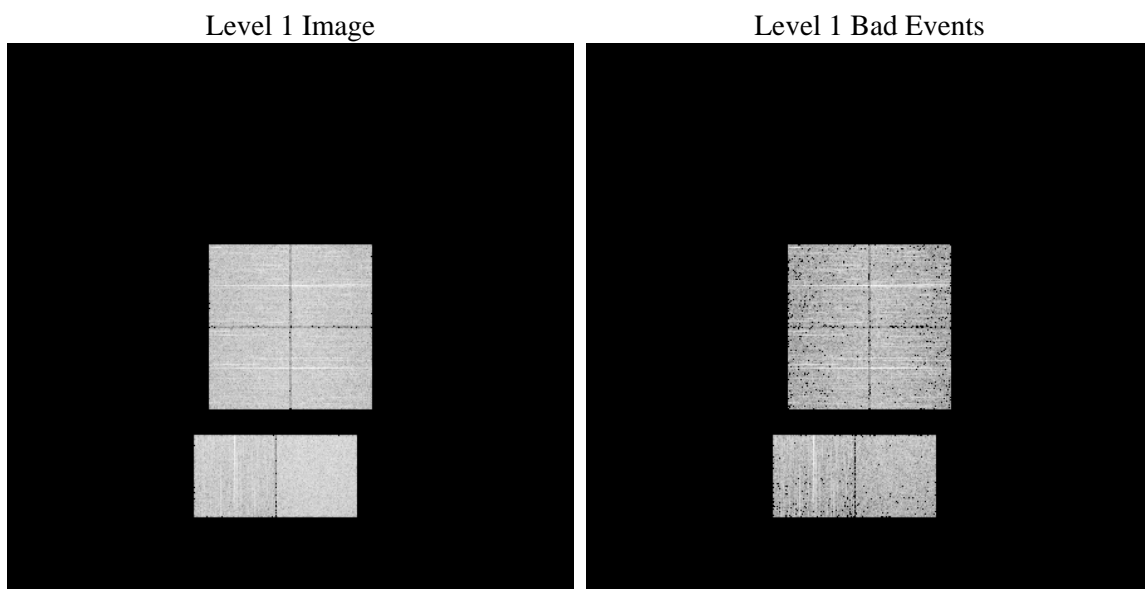
1 Front

seq_num	 	Sequence number
obs_id	56183	Observation id
title	ACIS-012367 diagnostics	Proposal title
observer	CHANDRA engineering request/realtime commanding	Principal investig
object	 	Source name
dtcycle	0	
cycle	P	events from which exps? Prim/Second/Both
ra_targ	0.0	Observer's specified target RA [deg]
dec_targ	0.0	Observer's specified target Dec [deg]
ra_nom	285.97116256784	Nominal RA [deg]
dec_nom	-2.9956428913108	Nominal Dec [deg]
roll_nom	138.34596804348	Nominal Roll [deg]
revision	2	Processing version of data
ontime	3281.8609459996	Sum of GTIs [s]
livetime	3240.304046602	Livetime [s]
ontime0	3281.8199059963	Sum of GTIs [s]
ontime1	3281.778865993	Sum of GTIs [s]
ontime2	3281.7378259897	Sum of GTIs [s]
ontime3	3281.9019860029	Sum of GTIs [s]
ontime6	3281.6967859864	Sum of GTIs [s]
ontime7	3281.8609459996	Sum of GTIs [s]
l2events	154429	Number of level 2 events

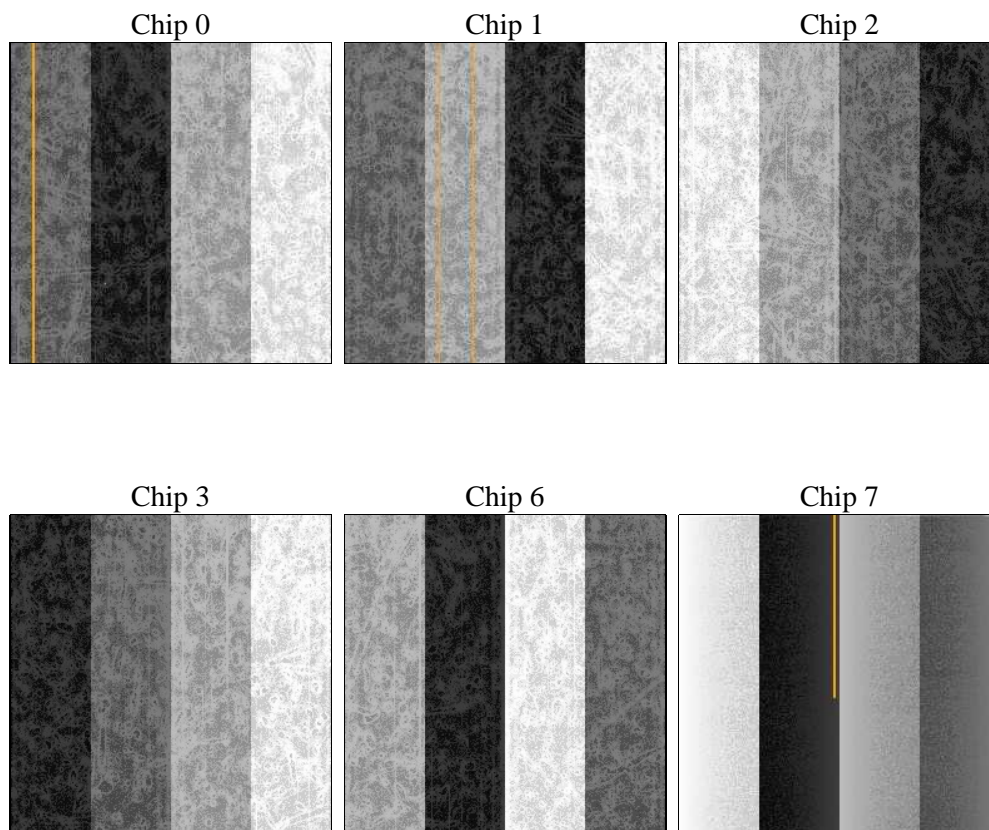
2 OBI

2.1 OBI

2.1.1 Images



2.1.2 Bias



2.1.3 Parameters

obi_num	0	Obi number	sched_exp_time	0.0	[s] Scheduled observation exposure time
ascdsver	8.4.5	Processing system revision	ontime	3281.8609459996	Sum of GTIs [s]
caldbver	4.5.0	 	ontime0	3281.8199059963	Sum of GTIs [s]
date	2012-06-28T21:06:30	Date and time of file creation	ontime1	3281.778865993	Sum of GTIs [s]
revision	2	Processing version of data	ontime2	3281.7378259897	Sum of GTIs [s]
			ontime3	3281.9019860029	Sum of GTIs [s]
			ontime6	3281.6967859864	Sum of GTIs [s]
			ontime7	3281.8609459996	Sum of GTIs [s]
			l1events	319036	Number of level 1 events

2.1.4 Events

	ccd 0	ccd 1	ccd 2	ccd 3	ccd 6	ccd 7		ccd 0	ccd 1	ccd 2	ccd 3	ccd 6	ccd 7
level 1 events	48891	50585	50720	51364	52927	64549	grade 0 events	13007	12934	13415	13359	13307	7061
rejected events	24537	25567	26003	26565	27152	25844		26%	25%	26%	26%	25%	10%
rejected %	50%	50%	51%	51%	51%	40%	grade 1 events	81	75	102	98	75	39
								0%	0%	0%	0%	0%	0%
							grade 2 events	4435	4820	4315	4313	4623	8446
								9%	9%	8%	8%	8%	13%
							grade 3 events	1581	1648	1671	1751	1684	3697
								3%	3%	3%	3%	3%	5%
							grade 4 events	1580	1668	1697	1723	1724	3444
								3%	3%	3%	3%	3%	5%
							grade 5 events	1562	1593	1418	1719	1593	4191
								3%	3%	2%	3%	3%	6%
							grade 6 events	3751	3948	3619	3653	4437	16057
								7%	7%	7%	7%	8%	24%
							grade 7 events	22894	23899	24483	24748	25484	21614
								46%	47%	48%	48%	48%	33%

2.2 Compared Parameters

Parameter	Planned	Actual	Parameter	Planned	Actual
Instrument	ACIS	ACIS	Obspar format version number	7	7
Detector	ACIS-012367	ACIS-012367	Obspar file type	PREDICTED	ACTUAL
Grating	NONE	NONE	Obspar update status	NONE	UPDATED
Data mode	FAINT	FAINT	Number of optional ACIS chips dropped	0	0
Observation mode	SECONDARY	SECONDARY	On-chip summing requested	N	N
[deg] Pointing RA	0	285.971162567836	Subarray requested	NONE	NONE
[deg] Pointing Dec	0	-2.995642891310831	Alternating exposures requested	N	N
[deg] Pointing Roll	0.0	138.3459680434803	[s] Primary exposure time	3.2	3.2
[mm] SIM focus pos	-1.429586	-1.428180813131781			
[mm] SIM defocus	0.1037507710433287	0.1051558262725154			
[mm] SIM translation stage pos	250.455976	250.4635187648994			
[mm] SIM translation stage offset	0	-0.007540371344731511			
[s] Observation start time (MET)	393193828.585592	393193827.56061			
Observation start date	2010-06-17T20:30:29	2010-06-17T20:30:27			
[s] Observation end time (MET)	393206579.586242	393206578.56126			
Observation end date	2010-06-18T00:03:00	2010-06-18T00:02:58			
Read mode	TIMED	TIMED			

2.3 Star Slots

2.4 FID Slots

A Summary

A.1 Status

V&V Scientist	Jen Lauer
V&V Date (YYYY-MM-DD)	2012.07.05
V&V Edition	1
V&V Disposition and Status	OK
V&V Charge Time	3.2818609459996

A.2 Comments