

V&V Reference Report

L2 ASCDS Version : 8.4.5

Observation 56160 - L2 Version 2
Chandra X-Ray Center

L2 Processing Date : Jun 29 2012

Contents

1	Front	2
2	OBI	3
2.1	OBI	3
2.1.1	Images	3
2.1.2	Bias	3
2.1.3	Parameters	4
2.1.4	Events	4
2.2	Compared Parameters	5
2.3	Star Slots	6
2.4	FID Slots	6
A	Summary	7
A.1	Status	7
A.2	Comments	7

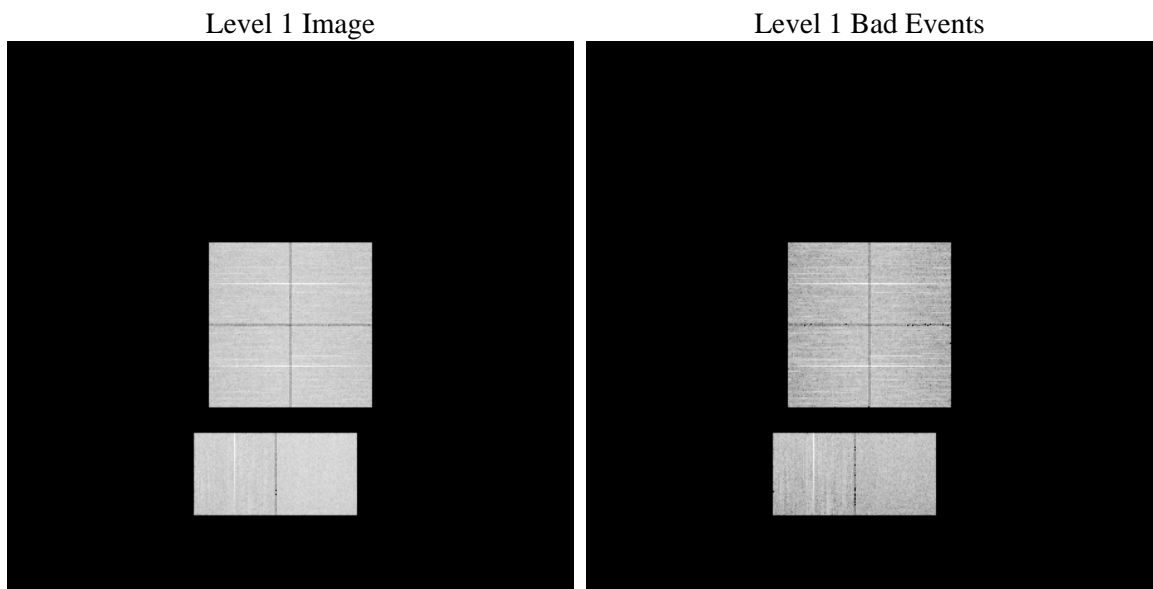
1 Front

seq_num	 	Sequence number
obs_id	56160	Observation id
title	ACIS-012367 diagnostics	Proposal title
observer	CHANDRA engineering request/realtime commanding	Principal investig
object	 	Source name
dtcycle	0	
cycle	P	events from which exps? Prim/Second/Both
ra_targ	0.0	Observer's specified target RA [deg]
dec_targ	0.0	Observer's specified target Dec [deg]
ra_nom	71.968136398309	Nominal RA [deg]
dec_nom	-26.00210340251	Nominal Dec [deg]
roll_nom	151.31568090084	Nominal Roll [deg]
revision	2	Processing version of data
ontime	8274.7352452278	Sum of GTIs [s]
livetime	8169.9555651054	Livetime [s]
ontime0	8274.6942052245	Sum of GTIs [s]
ontime1	8274.6531652212	Sum of GTIs [s]
ontime2	8274.6121252179	Sum of GTIs [s]
ontime3	8274.7762852311	Sum of GTIs [s]
ontime6	8274.5710852146	Sum of GTIs [s]
ontime7	8274.7352452278	Sum of GTIs [s]
l2events	391024	Number of level 2 events

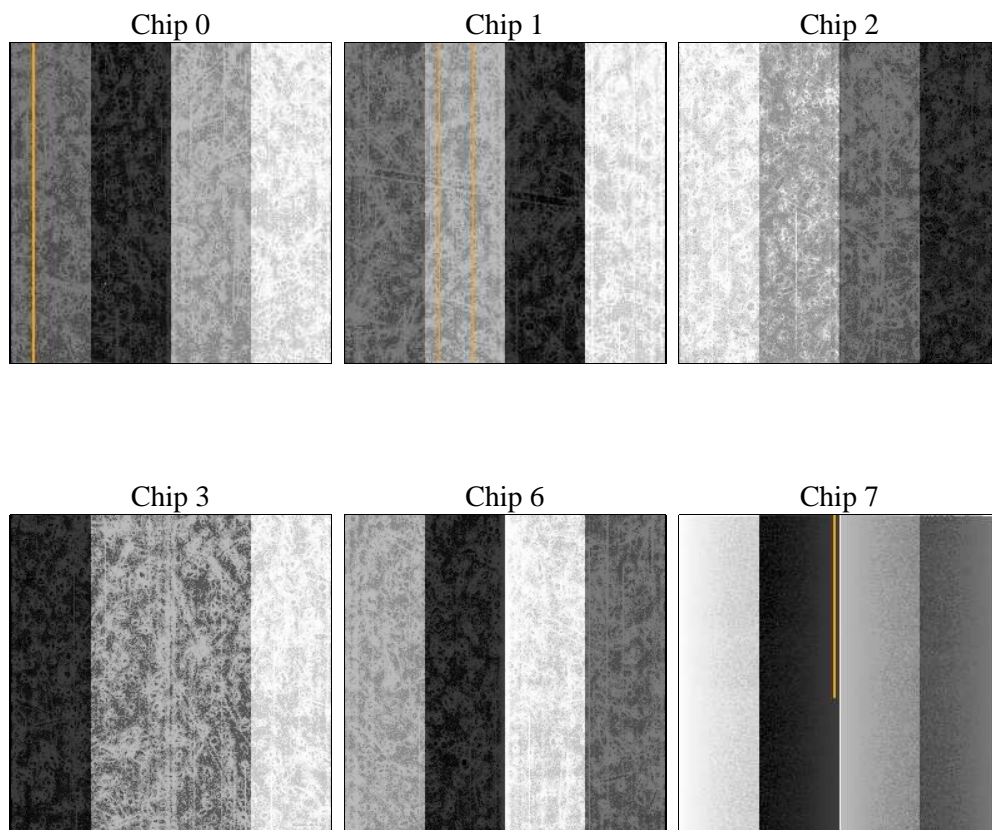
2 OBI

2.1 OBI

2.1.1 Images



2.1.2 Bias



2.1.3 Parameters

obi_num	0	Obi number	sched_exp_time	0.0	[s] Scheduled observation exposure time
ascdsver	8.4.5	Processing system revision	ontime	8274.7352452278	Sum of GTIs [s]
caldsver	4.5.0	 	ontime0	8274.6942052245	Sum of GTIs [s]
date	2012-06-29T10:47:08	Date and time of file creation	ontime1	8274.6531652212	Sum of GTIs [s]
revision	2	Processing version of data	ontime2	8274.6121252179	Sum of GTIs [s]
			ontime3	8274.7762852311	Sum of GTIs [s]
			ontime6	8274.5710852146	Sum of GTIs [s]
			ontime7	8274.7352452278	Sum of GTIs [s]
			l1events	827978	Number of level 1 events

2.1.4 Events

	ccd 0	ccd 1	ccd 2	ccd 3	ccd 6	ccd 7		ccd 0	ccd 1	ccd 2	ccd 3	ccd 6	ccd 7
level 1 events	129267	130676	132486	133596	137602	164351	grade 0 events	31535	28804	33076	33311	27935	15833
rejected events	66312	67123	70514	70434	73005	67250		24%	22%	24%	24%	20%	9%
rejected %	51%	51%	53%	52%	53%	40%	grade 1 events	212	140	204	216	149	141
								0%	0%	0%	0%	0%	0%
							grade 2 events	13067	16269	11245	11738	17293	22093
								10%	12%	8%	8%	12%	13%
							grade 3 events	3978	3658	3970	4184	3463	8068
								3%	2%	2%	3%	2%	4%
							grade 4 events	3886	3651	4044	4132	3420	7791
								3%	2%	3%	3%	2%	4%
							grade 5 events	3493	3341	3240	3834	3552	9389
								2%	2%	2%	2%	2%	5%
							grade 6 events	10512	11188	9655	9821	12511	43355
								8%	8%	7%	7%	9%	26%
							grade 7 events	62584	63625	67052	66360	69279	57681
								48%	48%	50%	49%	50%	35%

2.2 Compared Parameters

Parameter	Planned	Actual	Parameter	Planned	Actual
Instrument	ACIS	ACIS	Obspar format version number	7	7
Detector	ACIS-012367	ACIS-012367	Obspar file type	PREDICTED	ACTUAL
Grating	NONE	NONE	Obspar update status	NONE	UPDATED
Data mode	FAINT	FAINT	Number of optional ACIS chips dropped	0	0
Observation mode	SECONDARY	SECONDARY	On-chip summing requested	N	N
[deg] Pointing RA	0	71.96813639830908	Subarray requested	NONE	NONE
[deg] Pointing Dec	0	-26.00210340251002	Alternating exposures requested	N	N
[deg] Pointing Roll	0.0	151.315680900837	[s] Primary exposure time	3.2	3.2
[mm] SIM focus pos	-1.429586	-1.428180813131781			
[mm] SIM defocus	0.1037507710433287	0.1051558262725154			
[mm] SIM translation stage pos	250.455976	250.466033080201			
[mm] SIM translation stage offset	0	-0.01005468664627074			
[s] Observation start time (MET)	394137484.633793	394137483.60878			
Observation start date	2010-06-28T18:38:05	2010-06-28T18:38:03			
[s] Observation end time (MET)	394147664.934313	394147663.9093			
Observation end date	2010-06-28T21:27:45	2010-06-28T21:27:43			
Read mode	TIMED	TIMED			

2.3 Star Slots

2.4 FID Slots

A Summary

A.1 Status

V&V Scientist	Jen Lauer
V&V Date (YYYY-MM-DD)	2012.07.06
V&V Edition	1
V&V Disposition and Status	OK
V&V Charge Time	8.2747352452278

A.2 Comments