

V&V Reference Report

L2 ASCDS Version : 8.4.5

Observation 56115 - L2 Version 2
Chandra X-Ray Center

L2 Processing Date : Jun 30 2012

Contents

1	Front	2
2	OBI	3
2.1	OBI	3
2.1.1	Images	3
2.1.2	Bias	3
2.1.3	Parameters	4
2.1.4	Events	4
2.2	Compared Parameters	5
2.3	Star Slots	6
2.4	FID Slots	6
A	Summary	7
A.1	Status	7
A.2	Comments	7

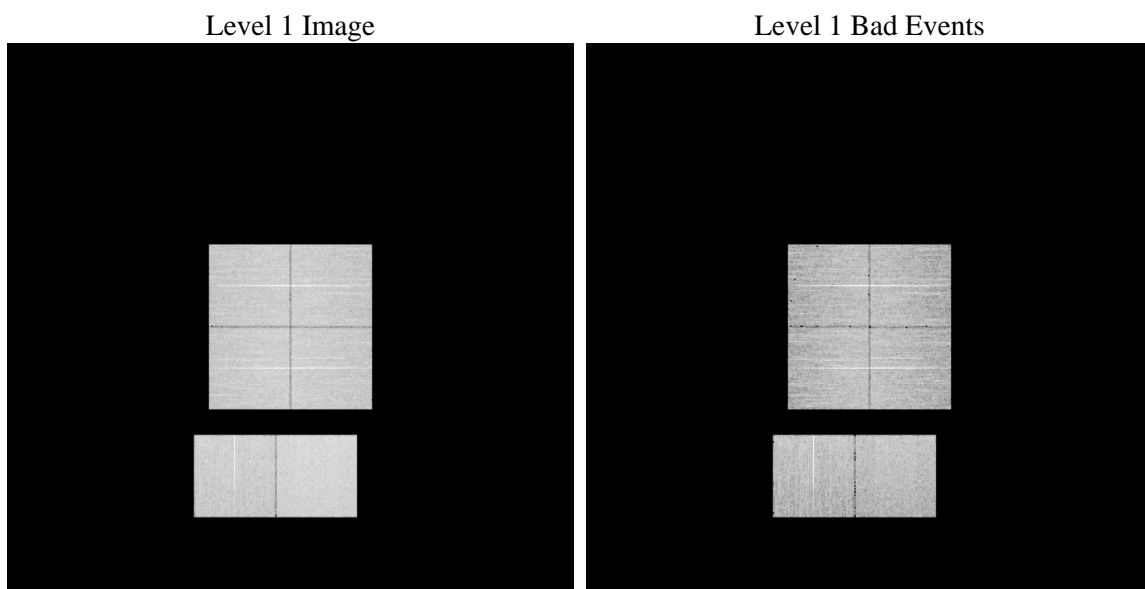
1 Front

seq_num	 	Sequence number
obs_id	56115	Observation id
title	ACIS-012367 diagnostics	Proposal title
observer	CHANDRA engineering request/realtime commanding	Principal investig
object	 	Source name
dtycle	0	
cycle	P	events from which exps? Prim/Second/Both
ra_targ	0.0	Observer's specified target RA [deg]
dec_targ	0.0	Observer's specified target Dec [deg]
ra_nom	276.99489450193	Nominal RA [deg]
dec_nom	-6.0270567206143	Nominal Dec [deg]
roll_nom	232.71323958852	Nominal Roll [deg]
revision	2	Processing version of data
ontime	8280.0950965285	Sum of GTIs [s]
livetime	8175.2475467416	Livetime [s]
ontime0	8276.8130861521	Sum of GTIs [s]
ontime1	8280.0130165219	Sum of GTIs [s]
ontime2	8273.4901152253	Sum of GTIs [s]
ontime3	8280.1361365318	Sum of GTIs [s]
ontime6	8279.9309365153	Sum of GTIs [s]
ontime7	8280.0950965285	Sum of GTIs [s]
l2events	381876	Number of level 2 events

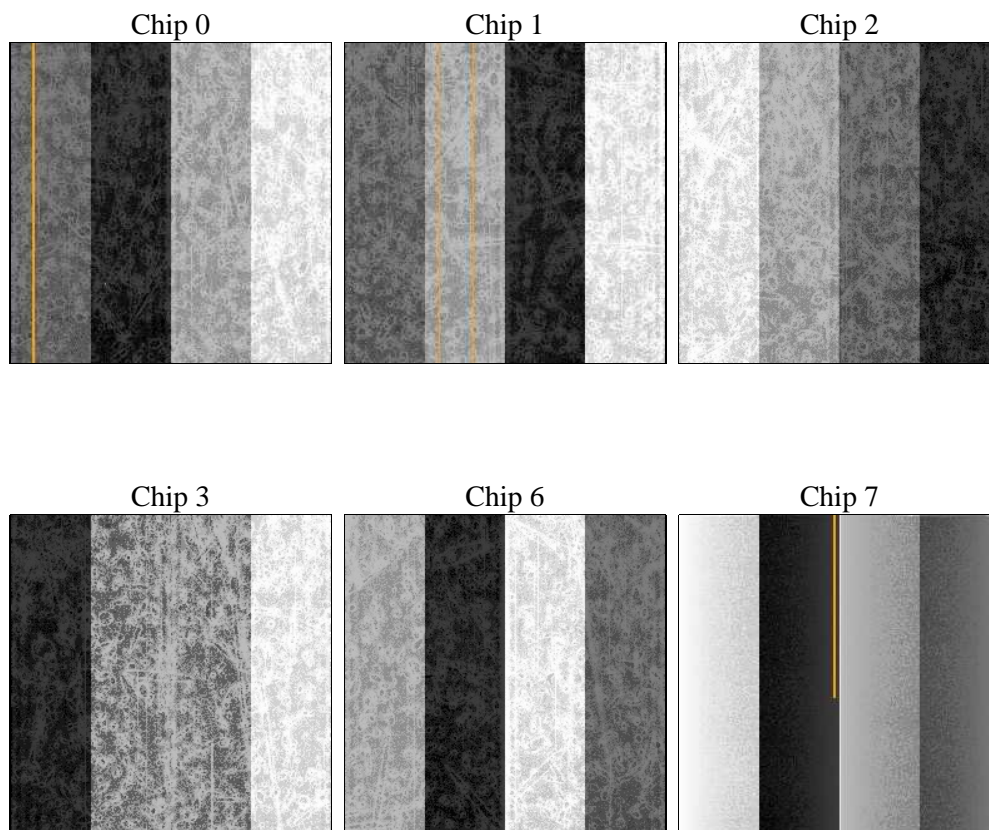
2 OBI

2.1 OBI

2.1.1 Images



2.1.2 Bias



2.1.3 Parameters

obi_num	0	Obi number	sched_exp_time	0.0	[s] Scheduled observation exposure time
ascdsver	8.4.5	Processing system revision	ontime	8280.0950965285	Sum of GTIs [s]
caldsver	4.5.0	 	ontime0	8276.8130861521	Sum of GTIs [s]
date	2012-06-30T14:16:21	Date and time of file creation	ontime1	8280.0130165219	Sum of GTIs [s]
revision	2	Processing version of data	ontime2	8273.4901152253	Sum of GTIs [s]
			ontime3	8280.1361365318	Sum of GTIs [s]
			ontime6	8279.9309365153	Sum of GTIs [s]
			ontime7	8280.0950965285	Sum of GTIs [s]
			l1events	799936	Number of level 1 events

2.1.4 Events

	ccd 0	ccd 1	ccd 2	ccd 3	ccd 6	ccd 7		ccd 0	ccd 1	ccd 2	ccd 3	ccd 6	ccd 7
level 1 events	123905	122760	129808	126524	132247	164692	grade 0 events	32197	31353	32861	33170	32691	17135
rejected events	63226	62133	68879	65346	68975	67365		25%	25%	25%	26%	24%	10%
rejected %	51%	50%	53%	51%	52%	40%	grade 1 events	226	187	237	270	197	166
								0%	0%	0%	0%	0%	0%
							grade 2 events	11086	11650	10648	10849	11506	20987
								8%	9%	8%	8%	8%	12%
							grade 3 events	4149	3963	4186	4144	4182	9008
								3%	3%	3%	3%	3%	5%
							grade 4 events	4043	4137	4310	4178	4180	8867
								3%	3%	3%	3%	3%	5%
							grade 5 events	3801	4023	3642	4283	4220	10950
								3%	3%	2%	3%	3%	6%
							grade 6 events	9204	9524	8924	8837	10713	41330
								7%	7%	6%	6%	8%	25%
							grade 7 events	59199	57923	65000	60793	64558	56249
								47%	47%	50%	48%	48%	34%

2.2 Compared Parameters

Parameter	Planned	Actual
Instrument	ACIS	ACIS
Detector	ACIS-012367	ACIS-012367
Grating	NONE	NONE
Data mode	FAINT	FAINT
Observation mode	SECONDARY	SECONDARY
[deg] Pointing RA	0	276.9948945019335
[deg] Pointing Dec	0	-6.027056720614262
[deg] Pointing Roll	0.0	232.71323958852
[mm] SIM focus pos	-1.429586	-1.428180813131781
[mm] SIM defocus	0.1037507710433287	0.1051558262725154
[mm] SIM translation stage pos	250.455976	250.466033080201
[mm] SIM translation stage offset	0	-0.01005468664627074
[s] Observation start time (MET)	395929270.825314	395929269.8003
Observation start date	2010-07-19T12:21:11	2010-07-19T12:21:09
[s] Observation end time (MET)	395966410.677213	395966409.6522
Observation end date	2010-07-19T22:40:11	2010-07-19T22:40:09
Read mode	TIMED	TIMED

Parameter	Planned	Actual
Obspar format version number	7	7
Obspar file type	PREDICTED	ACTUAL
Obspar update status	NONE	UPDATED
Number of optional ACIS chips dropped	0	0
On-chip summing requested	N	N
Subarray requested	NONE	NONE
Alternating exposures requested	N	N
[s] Primary exposure time	3.2	3.2

2.3 Star Slots

2.4 FID Slots

A Summary

A.1 Status

V&V Scientist	Jen Lauer
V&V Date (YYYY-MM-DD)	2012.07.09
V&V Edition	1
V&V Disposition and Status	OK
V&V Charge Time	8.2800950965285

A.2 Comments