

# V&V Reference Report

## L2 ASCDS Version : 8.4.5

Observation 56112 - L2 Version 2  
Chandra X-Ray Center

L2 Processing Date : Jun 30 2012

## Contents

<b>1</b>	<b>Front</b>	<b>2</b>
<b>2</b>	<b>OBI</b>	<b>3</b>
2.1	OBI . . . . .	3
2.1.1	Images . . . . .	3
2.1.2	Bias . . . . .	3
2.1.3	Parameters . . . . .	4
2.1.4	Events . . . . .	4
2.2	Compared Parameters . . . . .	5
2.3	Star Slots . . . . .	6
2.4	FID Slots . . . . .	6
<b>A</b>	<b>Summary</b>	<b>7</b>
A.1	Status . . . . .	7
A.2	Comments . . . . .	7

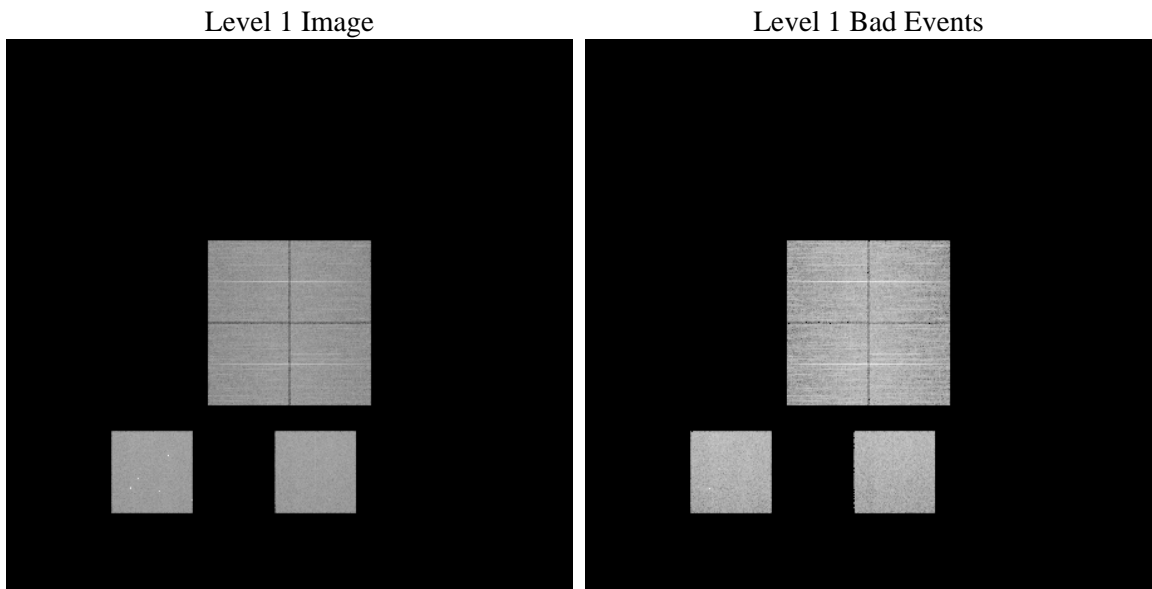
# 1 Front

seq_num	&#160	Sequence number
obs_id	56112	Observation id
title	ACIS-012357 diagnostics	Proposal title
observer	CHANDRA engineering request/realtime commanding	Principal investig
object	&#160	Source name
dtcycle	0	&#160
cycle	P	events from which exps? Prim/Second/Both
ra_targ	0.0	Observer's specified target RA [deg]
dec_targ	0.0	Observer's specified target Dec [deg]
ra_nom	318.0086599391	Nominal RA [deg]
dec_nom	-39.972064834049	Nominal Dec [deg]
roll_nom	40.995944540135	Nominal Roll [deg]
revision	2	Processing version of data
ontime	8281.5999692082	Sum of GTIs [s]
livetime	8176.7333638173	Livetime [s]
ontime0	8281.5999692082	Sum of GTIs [s]
ontime1	8281.5999692082	Sum of GTIs [s]
ontime2	8281.5999692082	Sum of GTIs [s]
ontime3	8281.5999692082	Sum of GTIs [s]
ontime5	8281.5999692082	Sum of GTIs [s]
ontime7	8281.5999692082	Sum of GTIs [s]
l2events	416915	Number of level 2 events

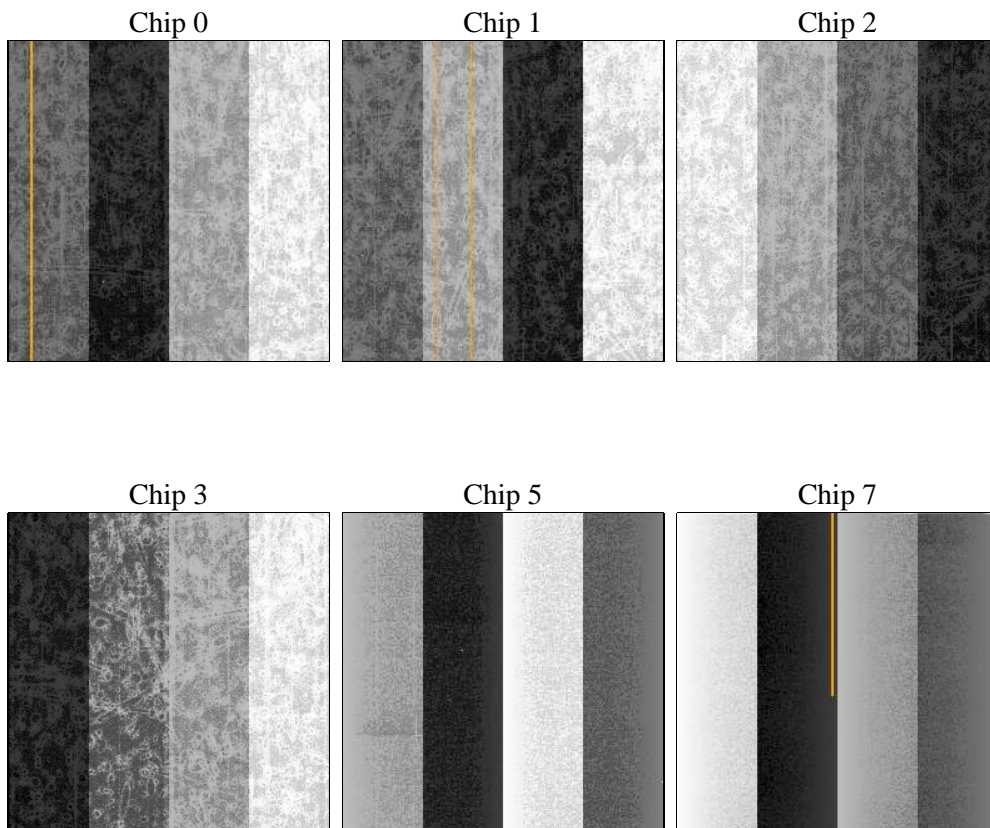
## 2 OBI

### 2.1 OBI

#### 2.1.1 Images



#### 2.1.2 Bias



### 2.1.3 Parameters

obi_num	0	Obi number	sched_exp_time	0.0	[s] Scheduled observation exposure time
ascdsver	8.4.5	Processing system revision	ontime	8281.5999692082	Sum of GTIs [s]
caldsver	4.5.0	&#160	ontime0	8281.5999692082	Sum of GTIs [s]
date	2012-06-30T15:22:28	Date and time of file creation	ontime1	8281.5999692082	Sum of GTIs [s]
revision	2	Processing version of data	ontime2	8281.5999692082	Sum of GTIs [s]
			ontime3	8281.5999692082	Sum of GTIs [s]
			ontime5	8281.5999692082	Sum of GTIs [s]
			ontime7	8281.5999692082	Sum of GTIs [s]
			l1events	838789	Number of level 1 events

### 2.1.4 Events

	ccd 0	ccd 1	ccd 2	ccd 3	ccd 5	ccd 7		ccd 0	ccd 1	ccd 2	ccd 3	ccd 5	ccd 7
level 1 events	125547	123099	127969	130220	168970	162984	grade 0 events	32330	31758	32399	33403	14408	16718
rejected events	64504	61620	67616	68892	69001	66870		25%	25%	25%	25%	8%	10%
rejected %	51%	50%	52%	52%	40%	41%	grade 1 events	230	203	260	262	177	163
								0%	0%	0%	0%	0%	0%
							grade 2 events	11246	11813	10907	10827	35064	20592
								8%	9%	8%	8%	20%	12%
							grade 3 events	4212	4195	4185	4211	4336	8768
								3%	3%	3%	3%	2%	5%
							grade 4 events	3987	4089	4192	4087	4156	8654
								3%	3%	3%	3%	2%	5%
							grade 5 events	3893	4067	3675	4240	9091	10697
								3%	3%	2%	3%	5%	6%
							grade 6 events	9268	9624	8670	8800	42005	41382
								7%	7%	6%	6%	24%	25%
							grade 7 events	60381	57350	63681	64390	59733	56010
								48%	46%	49%	49%	35%	34%

## 2.2 Compared Parameters

Parameter	Planned	Actual	Parameter	Planned	Actual
Instrument	ACIS	ACIS	Obspar format version number	7	7
Detector	ACIS-012357	ACIS-012357	Obspar file type	PREDICTED	ACTUAL
Grating	NONE	NONE	Obspar update status	NONE	UPDATED
Data mode	FAINT	FAINT	Number of optional ACIS chips dropped	0	0
Observation mode	SECONDARY	SECONDARY	On-chip summing requested	N	N
[deg] Pointing RA	0	318.0086599391024	Subarray requested	NONE	NONE
[deg] Pointing Dec	0	-39.97206483404853	Alternating exposures requested	N	N
[deg] Pointing Roll	0.0	40.99594454013506	[s] Primary exposure time	3.2	3.2
[mm] SIM focus pos	-1.429586	-1.428180813131781			
[mm] SIM defocus	0.1037507710433287	0.1051558262725154			
[mm] SIM translation stage pos	250.455976	250.466033080201			
[mm] SIM translation stage offset	0	-0.01005468664627074			
[s] Observation start time (MET)	396158719.137021	396158718.11203			
Observation start date	2010-07-22T04:05:19	2010-07-22T04:05:18			
[s] Observation end time (MET)	396190065.688622	396190064.66363			
Observation end date	2010-07-22T12:47:46	2010-07-22T12:47:44			
Read mode	TIMED	TIMED			

## 2.3 Star Slots

## 2.4 FID Slots

## A Summary

### A.1 Status

V&V Scientist	Jen Lauer
V&V Date (YYYY-MM-DD)	2012.07.09
V&V Edition	1
V&V Disposition and Status	OK
V&V Charge Time	8.2815999692082

### A.2 Comments