

V&V Reference Report

L2 ASCDS Version : 8.4.5

Observation 56033 - L2 Version 2
Chandra X-Ray Center

L2 Processing Date : Jul 3 2012

Contents

1	Front	2
2	OBI	3
2.1	OBI	3
2.1.1	Images	3
2.1.2	Bias	3
2.1.3	Parameters	4
2.1.4	Events	4
2.2	Compared Parameters	5
2.3	Star Slots	6
2.4	FID Slots	6
A	Summary	7
A.1	Status	7
A.2	Comments	7

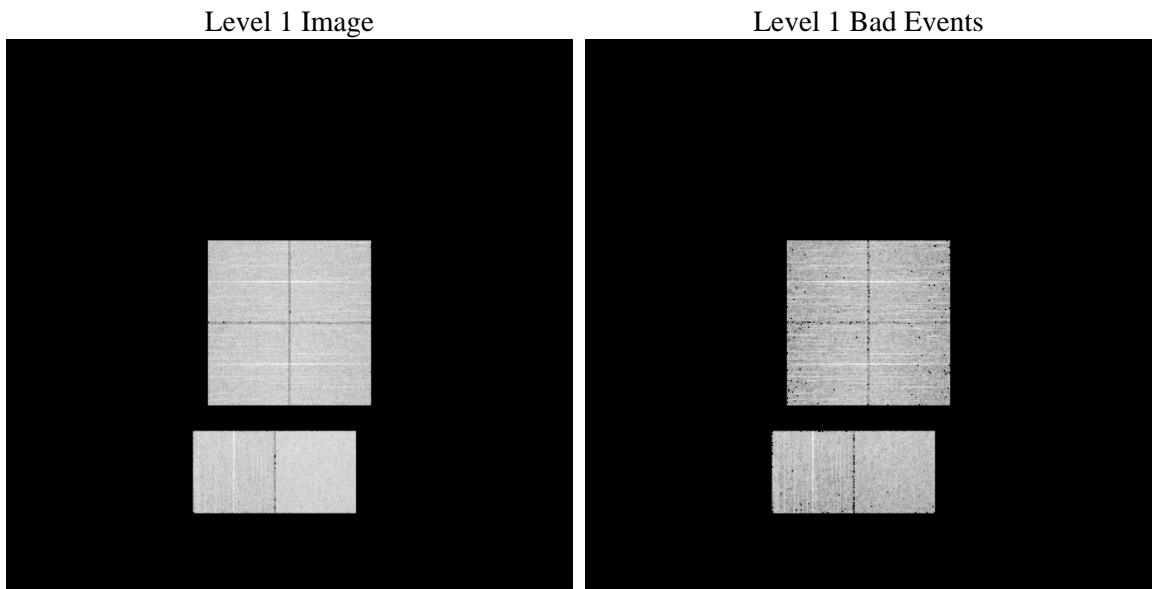
1 Front

seq_num	 	Sequence number
obs_id	56033	Observation id
title	ACIS-012367 diagnostics	Proposal title
observer	CHANDRA engineering request/realtime commanding	Principal investig
object	 	Source name
dtcycle	0	
cycle	P	events from which exps? Prim/Second/Both
ra_targ	0.0	Observer's specified target RA [deg]
dec_targ	0.0	Observer's specified target Dec [deg]
ra_nom	339.98244697572	Nominal RA [deg]
dec_nom	17.976652729521	Nominal Dec [deg]
roll_nom	201.72999068217	Nominal Roll [deg]
revision	2	Processing version of data
ontime	5368.3805289268	Sum of GTIs [s]
livetime	5300.4028622189	Livetime [s]
ontime0	5368.3394889235	Sum of GTIs [s]
ontime1	5368.2984489202	Sum of GTIs [s]
ontime2	5365.0163887143	Sum of GTIs [s]
ontime3	5368.4215689301	Sum of GTIs [s]
ontime6	5368.2163689137	Sum of GTIs [s]
ontime7	5368.3805289268	Sum of GTIs [s]
l2events	239586	Number of level 2 events

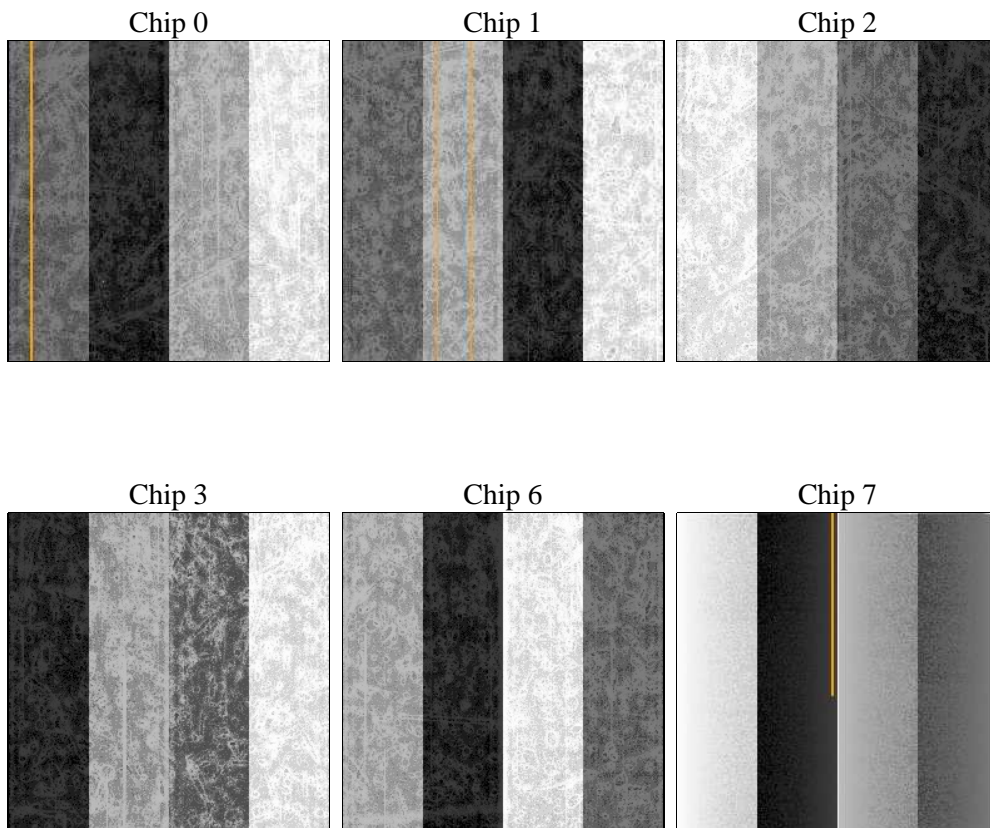
2 OBI

2.1 OBI

2.1.1 Images



2.1.2 Bias



2.1.3 Parameters

obi_num	0	Obi number	sched_exp_time	0.0	[s] Scheduled observation exposure time
ascdsver	8.4.5	Processing system revision	ontime	5368.3805289268	Sum of GTIs [s]
caldbver	4.5.0	 	ontime0	5368.3394889235	Sum of GTIs [s]
date	2012-07-03T07:46:36	Date and time of file creation	ontime1	5368.2984489202	Sum of GTIs [s]
revision	2	Processing version of data	ontime2	5365.0163887143	Sum of GTIs [s]
			ontime3	5368.4215689301	Sum of GTIs [s]
			ontime6	5368.2163689137	Sum of GTIs [s]
			ontime7	5368.3805289268	Sum of GTIs [s]
			l1events	503944	Number of level 1 events

2.1.4 Events

	ccd 0	ccd 1	ccd 2	ccd 3	ccd 6	ccd 7		ccd 0	ccd 1	ccd 2	ccd 3	ccd 6	ccd 7
level 1 events	78208	79089	80489	80762	82309	103087	grade 0 events	20090	19579	20488	20945	20667	10582
rejected events	39965	40856	42635	42098	42572	42329		25%	24%	25%	25%	25%	10%
rejected %	51%	51%	52%	52%	51%	41%	grade 1 events	125	115	130	157	121	92
								0%	0%	0%	0%	0%	0%
							grade 2 events	7093	7388	6631	6834	7008	13160
								9%	9%	8%	8%	8%	12%
							grade 3 events	2659	2669	2547	2615	2742	5476
								3%	3%	3%	3%	3%	5%
							grade 4 events	2602	2584	2590	2687	2568	5504
								3%	3%	3%	3%	3%	5%
							grade 5 events	2437	2510	2300	2642	2649	6927
								3%	3%	2%	3%	3%	6%
							grade 6 events	5825	6031	5628	5616	6775	26073
								7%	7%	6%	6%	8%	25%
							grade 7 events	37377	38213	40175	39266	39779	35273
								47%	48%	49%	48%	48%	34%

2.2 Compared Parameters

Parameter	Planned	Actual	Parameter	Planned	Actual
Instrument	ACIS	ACIS	Obspar format version number	7	7
Detector	ACIS-012367	ACIS-012367	Obspar file type	PREDICTED	ACTUAL
Grating	NONE	NONE	Obspar update status	NONE	UPDATED
Data mode	FAINT	FAINT	Number of optional ACIS chips dropped	0	0
Observation mode	SECONDARY	SECONDARY	On-chip summing requested	N	N
[deg] Pointing RA	0	339.9824469757226	Subarray requested	NONE	NONE
[deg] Pointing Dec	0	17.97665272952094	Alternating exposures requested	N	N
[deg] Pointing Roll	0.0	201.7299906821697	[s] Primary exposure time	3.2	3.2
[mm] SIM focus pos	-1.429586	-1.428180813131781			
[mm] SIM defocus	0.1037507710433287	0.1051558262725154			
[mm] SIM translation stage pos	250.455976	250.466033080201			
[mm] SIM translation stage offset	0	-0.01005468664627074			
[s] Observation start time (MET)	400537095.011253	400537093.98625			
Observation start date	2010-09-10T20:18:15	2010-09-10T20:18:13			
[s] Observation end time (MET)	400544358.161626	400544357.13662			
Observation end date	2010-09-10T22:19:18	2010-09-10T22:19:17			
Read mode	TIMED	TIMED			

2.3 Star Slots

2.4 FID Slots

A Summary

A.1 Status

V&V Scientist	Beth Sundheim
V&V Date (YYYY-MM-DD)	2012.07.12
V&V Edition	1
V&V Disposition and Status	OK
V&V Charge Time	5.3683805289268

A.2 Comments