

V&V Reference Report

L2 ASCDS Version : 8.4.5

Observation 56029 - L2 Version 2
Chandra X-Ray Center

L2 Processing Date : Jul 3 2012

Contents

1	Front	2
2	OBI	3
2.1	OBI	3
2.1.1	Images	3
2.1.2	Bias	3
2.1.3	Parameters	4
2.1.4	Events	4
2.2	Compared Parameters	5
2.3	Star Slots	6
2.4	FID Slots	6
A	Summary	7
A.1	Status	7
A.2	Comments	7

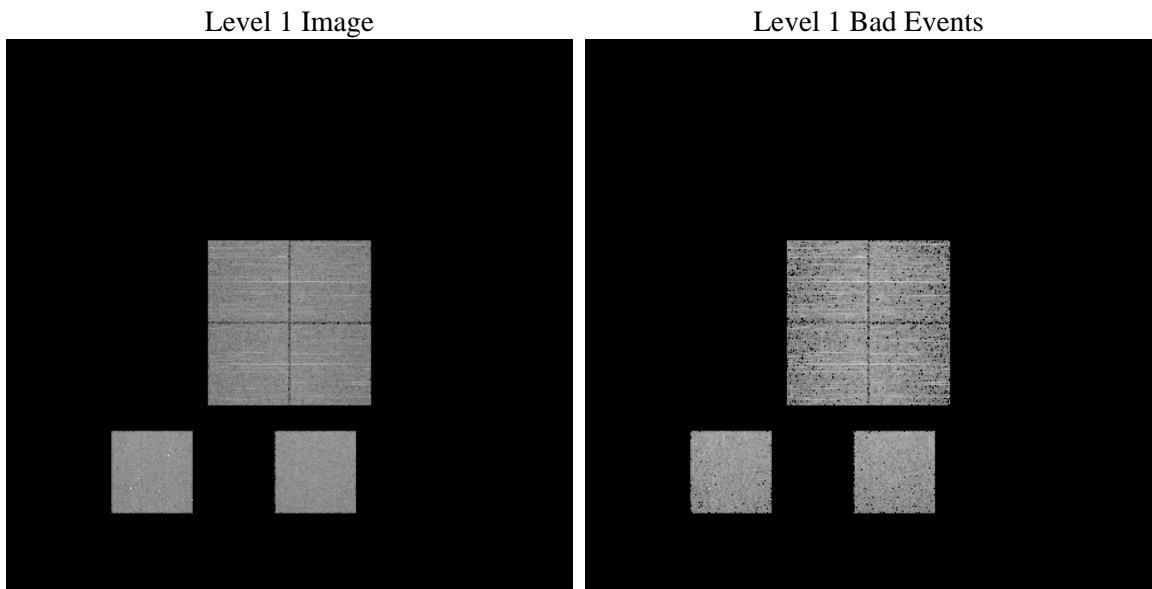
1 Front

seq_num	 	Sequence number
obs_id	56029	Observation id
title	ACIS-012357 diagnostics	Proposal title
observer	CHANDRA engineering request/realtime commanding	Principal investig
object	 	Source name
dtcycle	0	
cycle	P	events from which exps? Prim/Second/Both
ra_targ	0.0	Observer's specified target RA [deg]
dec_targ	0.0	Observer's specified target Dec [deg]
ra_nom	352.4732206541	Nominal RA [deg]
dec_nom	20.486030388342	Nominal Dec [deg]
roll_nom	176.26209698684	Nominal Roll [deg]
revision	2	Processing version of data
ontime	3259.4610881209	Sum of GTIs [s]
livetime	3218.1878292113	Livetime [s]
ontime0	3259.4200481176	Sum of GTIs [s]
ontime1	3259.3790081143	Sum of GTIs [s]
ontime2	3259.337968111	Sum of GTIs [s]
ontime3	3259.5021281242	Sum of GTIs [s]
ontime5	3259.2969281077	Sum of GTIs [s]
ontime7	3259.4610881209	Sum of GTIs [s]
l2events	158153	Number of level 2 events

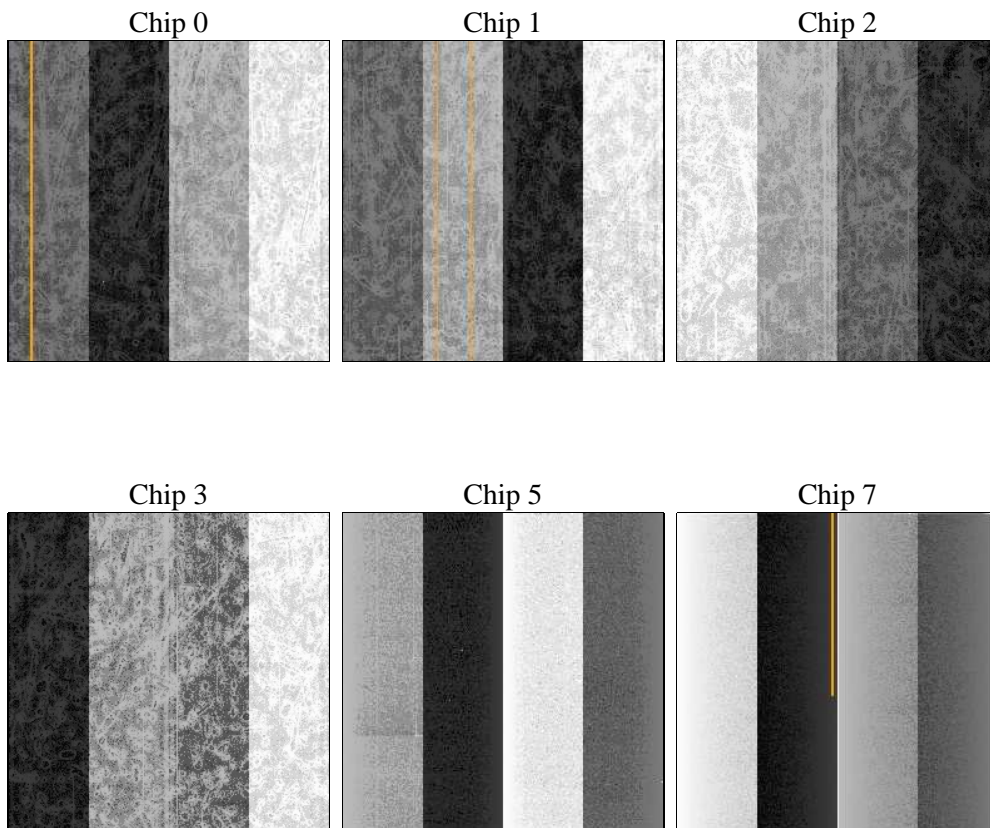
2 OBI

2.1 OBI

2.1.1 Images



2.1.2 Bias



2.1.3 Parameters

obi_num	0	Obi number	sched_exp_time	0.0	[s] Scheduled observation exposure time
ascdsver	8.4.5	Processing system revision	ontime	3259.4610881209	Sum of GTIs [s]
caldsver	4.5.0	 	ontime0	3259.4200481176	Sum of GTIs [s]
date	2012-07-03T09:51:00	Date and time of file creation	ontime1	3259.3790081143	Sum of GTIs [s]
revision	2	Processing version of data	ontime2	3259.337968111	Sum of GTIs [s]
			ontime3	3259.5021281242	Sum of GTIs [s]
			ontime5	3259.2969281077	Sum of GTIs [s]
			ontime7	3259.4610881209	Sum of GTIs [s]
			l1events	322496	Number of level 1 events

2.1.4 Events

	ccd 0	ccd 1	ccd 2	ccd 3	ccd 5	ccd 7		ccd 0	ccd 1	ccd 2	ccd 3	ccd 5	ccd 7
level 1 events	49112	48166	48982	47941	65556	62739	grade 0 events	12103	11790	12472	12434	5832	6345
rejected events	26028	24974	26036	24845	26608	26020		24%	24%	25%	25%	8%	10%
rejected %	52%	51%	53%	51%	40%	41%	grade 1 events	79	68	75	94	103	54
								0%	0%	0%	0%	0%	0%
							grade 2 events	4238	4419	4006	4020	14050	7938
								8%	9%	8%	8%	21%	12%
							grade 3 events	1579	1634	1556	1636	1592	3276
								3%	3%	3%	3%	2%	5%
							grade 4 events	1542	1588	1533	1617	1535	3231
								3%	3%	3%	3%	2%	5%
							grade 5 events	1438	1566	1387	1570	3556	4104
								2%	3%	2%	3%	5%	6%
							grade 6 events	3622	3761	3379	3389	15939	15929
								7%	7%	6%	7%	24%	25%
							grade 7 events	24511	23340	24574	23181	22949	21862
								49%	48%	50%	48%	35%	34%

2.2 Compared Parameters

Parameter	Planned	Actual	Parameter	Planned	Actual
Instrument	ACIS	ACIS	Obspar format version number	7	7
Detector	ACIS-012357	ACIS-012357	Obspar file type	PREDICTED	ACTUAL
Grating	NONE	NONE	Obspar update status	NONE	UPDATED
Data mode	FAINT	FAINT	Number of optional ACIS chips dropped	0	0
Observation mode	SECONDARY	SECONDARY	On-chip summing requested	N	N
[deg] Pointing RA	0	352.4732206540963	Subarray requested	NONE	NONE
[deg] Pointing Dec	0	20.48603038834158	Alternating exposures requested	N	N
[deg] Pointing Roll	0.0	176.2620969868427	[s] Primary exposure time	3.2	3.2
[mm] SIM focus pos	-1.429586	-1.428180813131781			
[mm] SIM defocus	0.1037507710433287	0.1051558262725154			
[mm] SIM translation stage pos	250.455976	250.466033080201			
[mm] SIM translation stage offset	0	-0.01005468664627074			
[s] Observation start time (MET)	400762435.122822	400762434.09781			
Observation start date	2010-09-13T10:53:55	2010-09-13T10:53:54			
[s] Observation end time (MET)	400767435.073079	400767434.04806			
Observation end date	2010-09-13T12:17:15	2010-09-13T12:17:14			
Read mode	TIMED	TIMED			

2.3 Star Slots

2.4 FID Slots

A Summary

A.1 Status

V&V Scientist	Jen Lauer
V&V Date (YYYY-MM-DD)	2012.07.11
V&V Edition	1
V&V Disposition and Status	OK
V&V Charge Time	3.2594610881209

A.2 Comments