

# V&V Reference Report

## L2 ASCDS Version : 8.4.5

Observation 56023 - L2 Version 2  
Chandra X-Ray Center

L2 Processing Date : Jul 3 2012

## Contents

<b>1</b>	<b>Front</b>	<b>2</b>
<b>2</b>	<b>OBI</b>	<b>3</b>
2.1	OBI . . . . .	3
2.1.1	Images . . . . .	3
2.1.2	Bias . . . . .	3
2.1.3	Parameters . . . . .	4
2.1.4	Events . . . . .	4
2.2	Compared Parameters . . . . .	5
2.3	Star Slots . . . . .	6
2.4	FID Slots . . . . .	6
<b>A</b>	<b>Summary</b>	<b>7</b>
A.1	Status . . . . .	7
A.2	Comments . . . . .	7

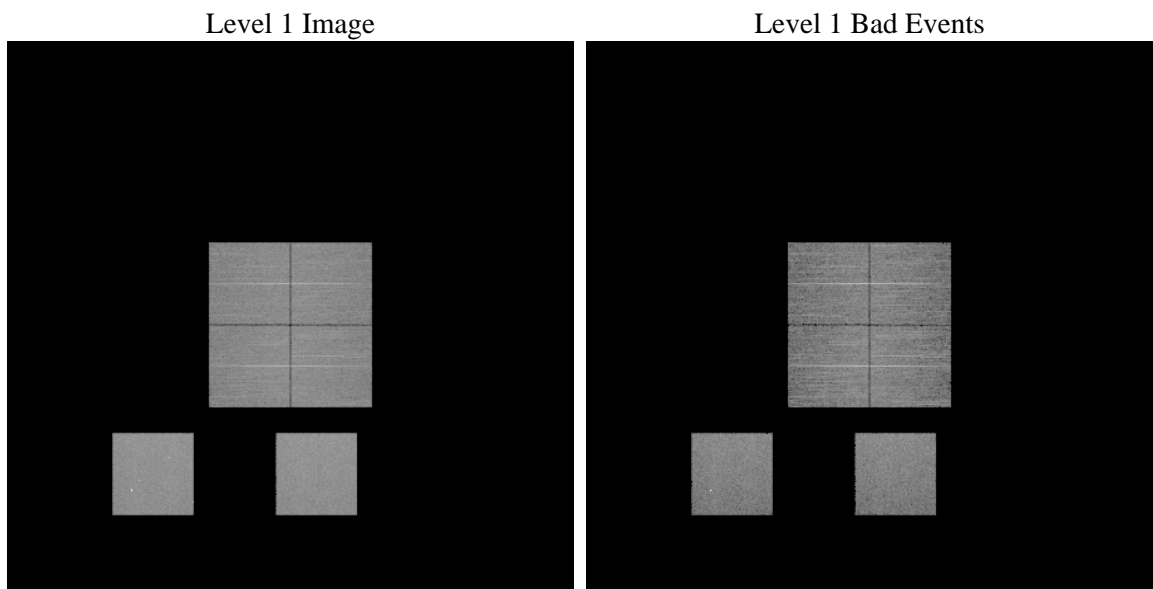
# 1 Front

seq_num	&#160	Sequence number
obs_id	56023	Observation id
title	ACIS-012357 diagnostics	Proposal title
observer	CHANDRA engineering request/realtime commanding	Principal investig
object	&#160	Source name
dtcycle	0	&#160
cycle	P	events from which exps? Prim/Second/Both
ra_targ	0.0	Observer's specified target RA [deg]
dec_targ	0.0	Observer's specified target Dec [deg]
ra_nom	10.012732134124	Nominal RA [deg]
dec_nom	-24.973614402986	Nominal Dec [deg]
roll_nom	33.332145407956	Nominal Roll [deg]
revision	2	Processing version of data
ontime	8012.7999702096	Sum of GTIs [s]
livetime	7911.3370722579	Livetime [s]
ontime0	8012.7999702096	Sum of GTIs [s]
ontime1	8012.7999702096	Sum of GTIs [s]
ontime2	8012.7999702096	Sum of GTIs [s]
ontime3	8012.7999702096	Sum of GTIs [s]
ontime5	8012.7999702096	Sum of GTIs [s]
ontime7	8012.7999702096	Sum of GTIs [s]
l2events	422023	Number of level 2 events

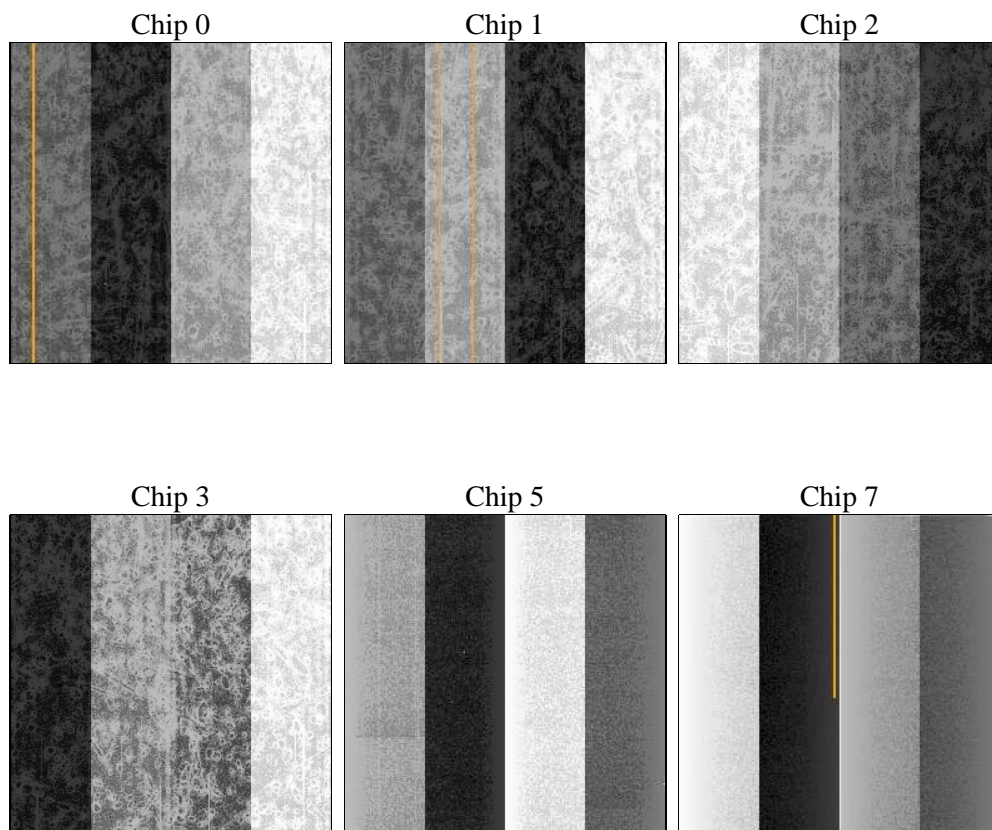
## 2 OBI

### 2.1 OBI

#### 2.1.1 Images



#### 2.1.2 Bias



### 2.1.3 Parameters

obi_num	0	Obi number	sched_exp_time	0.0	[s] Scheduled observation exposure time
ascdsver	8.4.5	Processing system revision	ontime	8012.7999702096	Sum of GTIs [s]
caldsver	4.5.0	&#160	ontime0	8012.7999702096	Sum of GTIs [s]
date	2012-07-03T12:00:44	Date and time of file creation	ontime1	8012.7999702096	Sum of GTIs [s]
revision	2	Processing version of data	ontime2	8012.7999702096	Sum of GTIs [s]
			ontime3	8012.7999702096	Sum of GTIs [s]
			ontime5	8012.7999702096	Sum of GTIs [s]
			ontime7	8012.7999702096	Sum of GTIs [s]
			l1events	851187	Number of level 1 events

### 2.1.4 Events

	ccd 0	ccd 1	ccd 2	ccd 3	ccd 5	ccd 7		ccd 0	ccd 1	ccd 2	ccd 3	ccd 5	ccd 7
level 1 events	127220	127734	131004	134373	167122	163734	grade 0 events	34813	33959	35005	35707	13391	17806
rejected events	63832	64173	68659	70806	71146	68493		27%	26%	26%	26%	8%	10%
rejected %	50%	50%	52%	52%	42%	41%	grade 1 events	204	230	264	260	213	124
								0%	0%	0%	0%	0%	0%
							grade 2 events	12272	12770	11402	11644	36034	21491
								9%	9%	8%	8%	21%	13%
							grade 3 events	4375	4413	4389	4520	4441	9080
								3%	3%	3%	3%	2%	5%
							grade 4 events	4318	4458	4365	4490	4282	8850
								3%	3%	3%	3%	2%	5%
							grade 5 events	3885	4006	3608	4361	9392	10316
								3%	3%	2%	3%	5%	6%
							grade 6 events	10493	11018	10042	10219	41622	41682
								8%	8%	7%	7%	24%	25%
							grade 7 events	56860	56880	61929	63172	57747	54385
								44%	44%	47%	47%	34%	33%

## 2.2 Compared Parameters

Parameter	Planned	Actual	Parameter	Planned	Actual
Instrument	ACIS	ACIS	Obspar format version number	7	7
Detector	ACIS-012357	ACIS-012357	Obspar file type	PREDICTED	ACTUAL
Grating	NONE	NONE	Obspar update status	OVERRIDE	OVERRIDE
Data mode	FAINT	FAINT	Number of optional ACIS chips dropped	0	0
Observation mode	SECONDARY	SECONDARY	On-chip summing requested	N	N
[deg] Pointing RA	0	10.01273213412361	Subarray requested	NONE	NONE
[deg] Pointing Dec	0	-24.97361440298578	Alternating exposures requested	N	N
[deg] Pointing Roll	0.0	33.33214540795553	[s] Primary exposure time	3.2	3.2
[mm] SIM focus pos	-1.4281808131	-1.4281808131			
[mm] SIM defocus	0.1051557500557434	0.1051557500557434			
[mm] SIM translation stage pos	250.4635187649	250.4635187649			
[mm] SIM translation stage offset	-0.007542945905271381	-0.007542945905271381			
[s] Observation start time (MET)	401184927.844471	401184927.844471			
Observation start date	2010-09-18T08:15:28	2010-09-18T08:15:27			
[s] Observation end time (MET)	401194473.583271	401194473.583271			
Observation end date	2010-09-18T10:54:34	2010-09-18T10:54:33			
Read mode	TIMED	TIMED			

## **2.3 Star Slots**

## **2.4 FID Slots**

## **A Summary**

### **A.1 Status**

V&V Scientist	Jen Lauer
V&V Date (YYYY-MM-DD)	2012.07.11
V&V Edition	1
V&V Disposition and Status	OK
V&V Charge Time	8.0127999702096

### **A.2 Comments**