

V&V Reference Report

L2 ASCDS Version : 8.4.5

Observation 55993 - L2 Version 2
Chandra X-Ray Center

L2 Processing Date : Jul 4 2012

Contents

1	Front	2
2	OBI	3
2.1	OBI	3
2.1.1	Images	3
2.1.2	Bias	3
2.1.3	Parameters	4
2.1.4	Events	4
2.2	Compared Parameters	5
2.3	Star Slots	6
2.4	FID Slots	6
A	Summary	7
A.1	Status	7
A.2	Comments	7

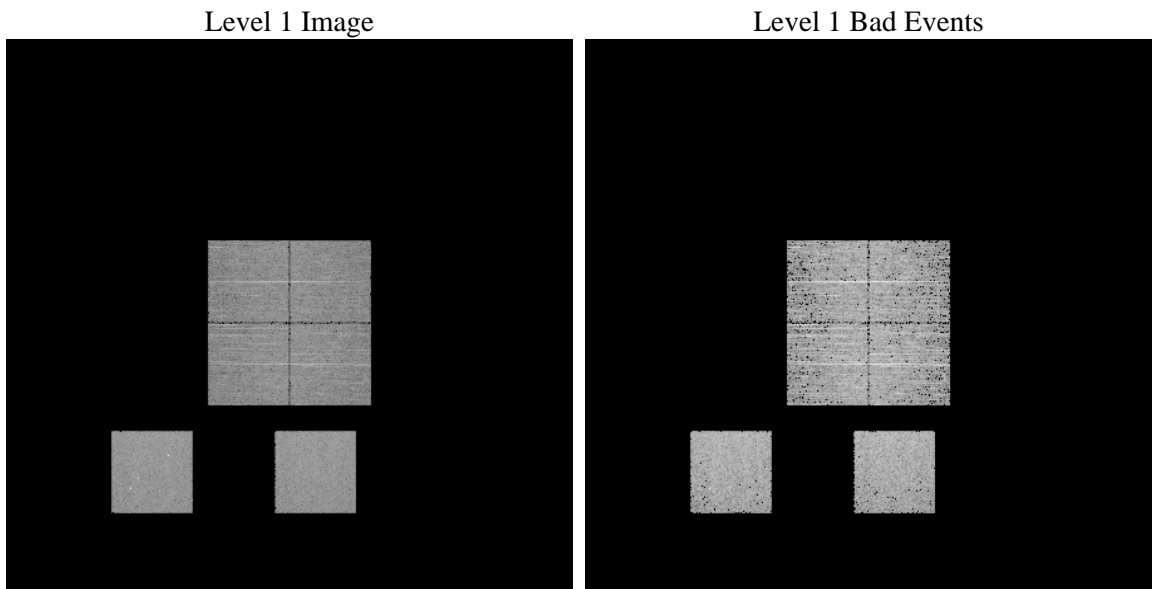
1 Front

seq_num	 	Sequence number
obs_id	55993	Observation id
title	ACIS-012357 diagnostics	Proposal title
observer	CHANDRA engineering request/realtime commanding	Principal investig
object	 	Source name
dtcycle	0	
cycle	P	events from which exps? Prim/Second/Both
ra_targ	0.0	Observer's specified target RA [deg]
dec_targ	0.0	Observer's specified target Dec [deg]
ra_nom	3.978198968992	Nominal RA [deg]
dec_nom	27.978842916099	Nominal Dec [deg]
roll_nom	194.94293212019	Nominal Roll [deg]
revision	2	Processing version of data
ontime	3285.148666203	Sum of GTIs [s]
livetime	3243.5501357125	Livetime [s]
ontime0	3285.1076261997	Sum of GTIs [s]
ontime1	3285.0665861964	Sum of GTIs [s]
ontime2	3285.0255461931	Sum of GTIs [s]
ontime3	3285.1897062063	Sum of GTIs [s]
ontime5	3284.9845061898	Sum of GTIs [s]
ontime7	3285.148666203	Sum of GTIs [s]
l2events	157967	Number of level 2 events

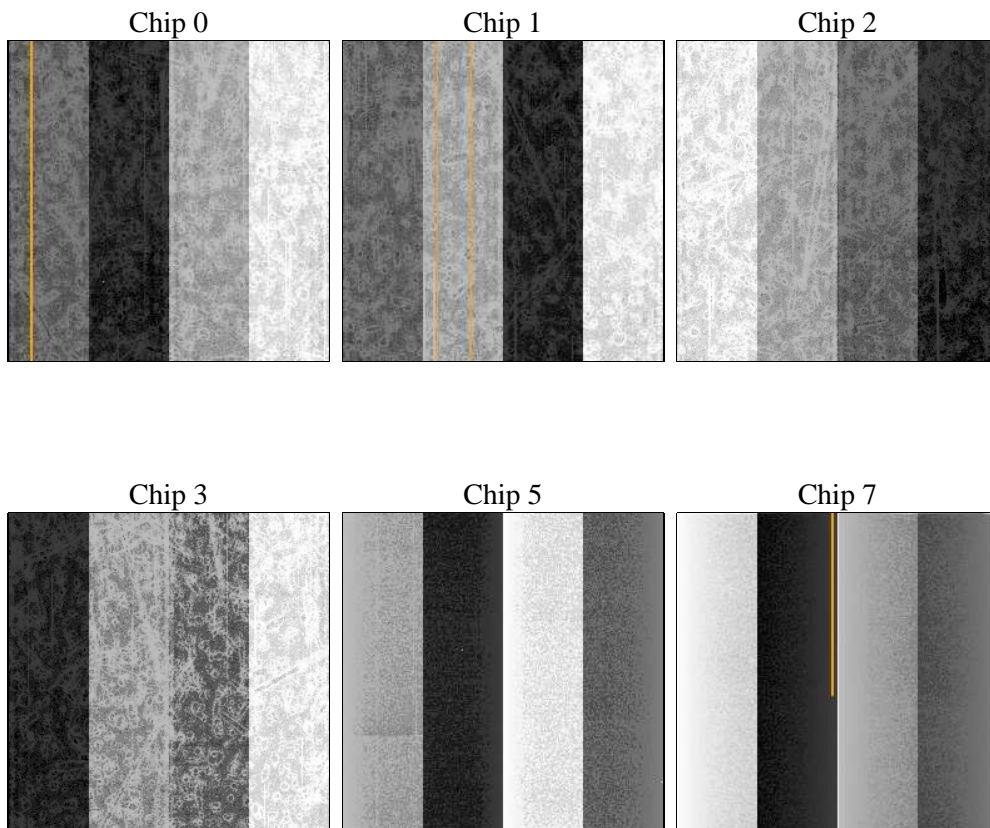
2 OBI

2.1 OBI

2.1.1 Images



2.1.2 Bias



2.1.3 Parameters

obi_num	0	Obi number	sched_exp_time	0.0	[s] Scheduled observation exposure time
ascdsver	8.4.5	Processing system revision	ontime	3285.148666203	Sum of GTIs [s]
caldsver	4.5.0	 	ontime0	3285.1076261997	Sum of GTIs [s]
date	2012-07-04T16:12:47	Date and time of file creation	ontime1	3285.0665861964	Sum of GTIs [s]
revision	2	Processing version of data	ontime2	3285.0255461931	Sum of GTIs [s]
			ontime3	3285.1897062063	Sum of GTIs [s]
			ontime5	3284.9845061898	Sum of GTIs [s]
			ontime7	3285.148666203	Sum of GTIs [s]
			l1events	322281	Number of level 1 events

2.1.4 Events

	ccd 0	ccd 1	ccd 2	ccd 3	ccd 5	ccd 7		ccd 0	ccd 1	ccd 2	ccd 3	ccd 5	ccd 7
level 1 events	47512	46489	50107	49553	65249	63371	grade 0 events	12113	11867	12355	12393	5716	6305
rejected events	24626	23539	27227	26478	26843	26635		25%	25%	24%	25%	8%	9%
rejected %	51%	50%	54%	53%	41%	42%	grade 1 events	63	63	90	92	79	53
								0%	0%	0%	0%	0%	0%
							grade 2 events	4149	4311	4003	4050	13342	8077
								8%	9%	7%	8%	20%	12%
							grade 3 events	1627	1561	1541	1580	1744	3317
								3%	3%	3%	3%	2%	5%
							grade 4 events	1532	1546	1593	1619	1632	3324
								3%	3%	3%	3%	2%	5%
							grade 5 events	1577	1611	1431	1743	3539	4166
								3%	3%	2%	3%	5%	6%
							grade 6 events	3465	3665	3388	3433	15972	15713
								7%	7%	6%	6%	24%	24%
							grade 7 events	22986	21865	25706	24643	23225	22416
								48%	47%	51%	49%	35%	35%

2.2 Compared Parameters

Parameter	Planned	Actual	Parameter	Planned	Actual
Instrument	ACIS	ACIS	Obspar format version number	7	7
Detector	ACIS-012357	ACIS-012357	Obspar file type	PREDICTED	ACTUAL
Grating	NONE	NONE	Obspar update status	NONE	UPDATED
Data mode	FAINT	FAINT	Number of optional ACIS chips dropped	0	0
Observation mode	SECONDARY	SECONDARY	On-chip summing requested	N	N
[deg] Pointing RA	0	3.978198968991965	Subarray requested	NONE	NONE
[deg] Pointing Dec	0	27.97884291609933	Alternating exposures requested	N	N
[deg] Pointing Roll	0.0	194.942932120192	[s] Primary exposure time	3.2	3.2
[mm] SIM focus pos	-1.429586	-1.428180813131781			
[mm] SIM defocus	0.1037507710433287	0.1051558262725154			
[mm] SIM translation stage pos	250.455976	250.466033080201			
[mm] SIM translation stage offset	0	-0.01005468664627074			
[s] Observation start time (MET)	402592228.316721	402592227.29173			
Observation start date	2010-10-04T15:10:28	2010-10-04T15:10:27			
[s] Observation end time (MET)	402597408.666987	402597407.64199			
Observation end date	2010-10-04T16:36:49	2010-10-04T16:36:47			
Read mode	TIMED	TIMED			

2.3 Star Slots

2.4 FID Slots

A Summary

A.1 Status

V&V Scientist	Jen Lauer
V&V Date (YYYY-MM-DD)	2012.07.12
V&V Edition	1
V&V Disposition and Status	OK
V&V Charge Time	3.285148666203

A.2 Comments