

V&V Reference Report

L2 ASCDS Version : 8.4.5

Observation 55976 - L2 Version 2
Chandra X-Ray Center

L2 Processing Date : Jul 5 2012

Contents

1	Front	2
2	OBI	3
2.1	OBI	3
2.1.1	Images	3
2.1.2	Bias	3
2.1.3	Parameters	4
2.1.4	Events	4
2.2	Compared Parameters	5
2.3	Star Slots	6
2.4	FID Slots	6
A	Summary	7
A.1	Status	7
A.2	Comments	7

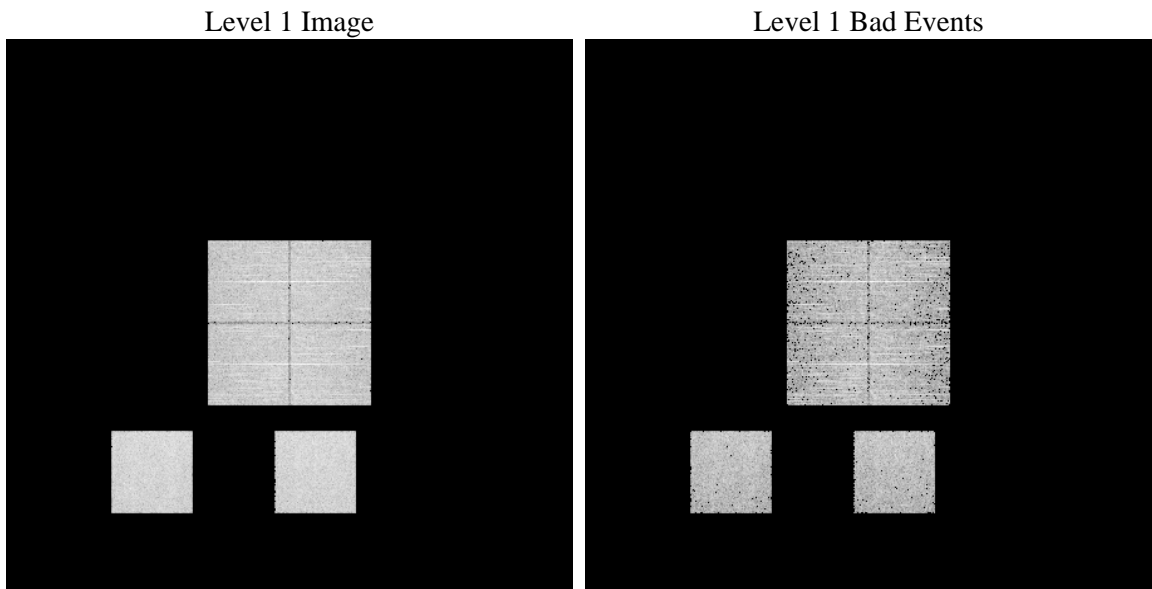
1 Front

seq_num	 	Sequence number
obs_id	55976	Observation id
title	ACIS-012357 diagnostics	Proposal title
observer	CHANDRA engineering request/realtime commanding	Principal investig
object	 	Source name
dtcycle	0	
cycle	P	events from which exps? Prim/Second/Both
ra_targ	0.0	Observer's specified target RA [deg]
dec_targ	0.0	Observer's specified target Dec [deg]
ra_nom	25.014421841256	Nominal RA [deg]
dec_nom	-17.477428262802	Nominal Dec [deg]
roll_nom	17.302957313036	Nominal Roll [deg]
revision	2	Processing version of data
ontime	3279.9999878407	Sum of GTIs [s]
livetime	3238.4666530157	Livetime [s]
ontime0	3279.9999878407	Sum of GTIs [s]
ontime1	3279.9999878407	Sum of GTIs [s]
ontime2	3279.9999878407	Sum of GTIs [s]
ontime3	3279.9999878407	Sum of GTIs [s]
ontime5	3279.9999878407	Sum of GTIs [s]
ontime7	3279.9999878407	Sum of GTIs [s]
l2events	154215	Number of level 2 events

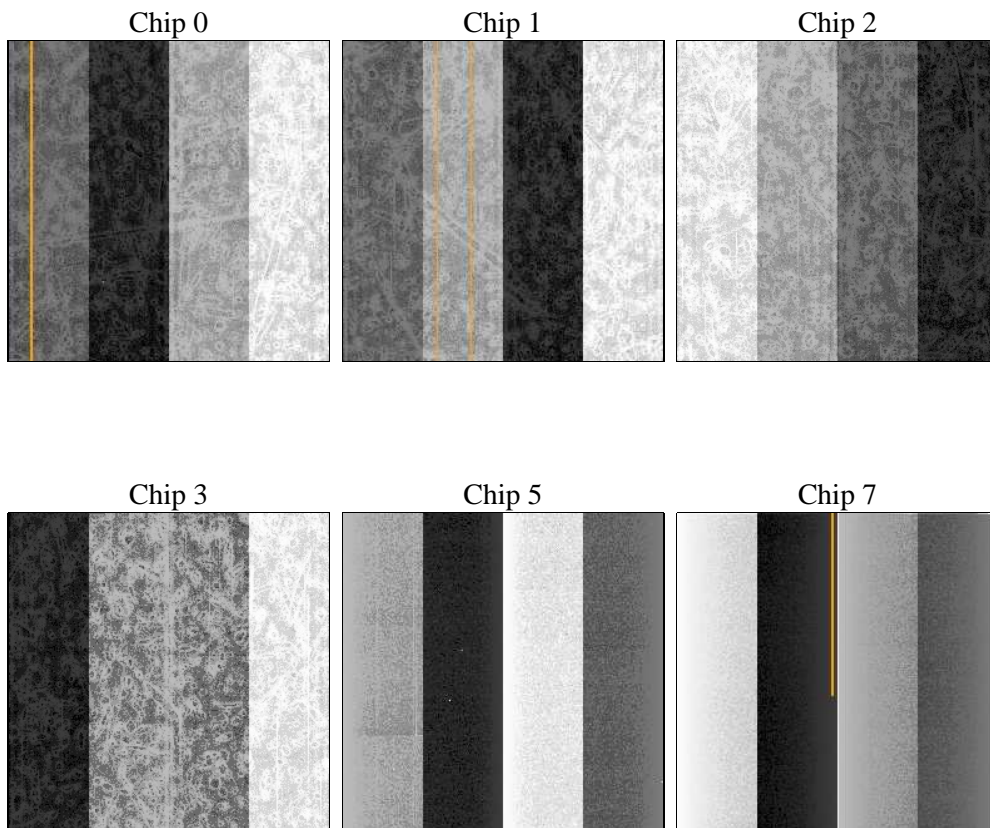
2 OBI

2.1 OBI

2.1.1 Images



2.1.2 Bias



2.1.3 Parameters

obi_num	0	Obi number	sched_exp_time	0.0	[s] Scheduled observation exposure time
ascdsver	8.4.5	Processing system revision	ontime	3279.9999878407	Sum of GTIs [s]
caldsver	4.5.0	 	ontime0	3279.9999878407	Sum of GTIs [s]
date	2012-07-04T19:53:36	Date and time of file creation	ontime1	3279.9999878407	Sum of GTIs [s]
revision	2	Processing version of data	ontime2	3279.9999878407	Sum of GTIs [s]
			ontime3	3279.9999878407	Sum of GTIs [s]
			ontime5	3279.9999878407	Sum of GTIs [s]
			ontime7	3279.9999878407	Sum of GTIs [s]
			l1events	314379	Number of level 1 events

2.1.4 Events

	ccd 0	ccd 1	ccd 2	ccd 3	ccd 5	ccd 7
level 1 events	46592	47170	48088	48722	62457	61350
rejected events	23817	24605	26005	25975	26475	25894
rejected %	51%	52%	54%	53%	42%	42%

	ccd 0	ccd 1	ccd 2	ccd 3	ccd 5	ccd 7
grade 0 events	11928	11426	12034	12391	3693	5982
	25%	24%	25%	25%	5%	9%
grade 1 events	87	75	68	81	82	48
	0%	0%	0%	0%	0%	0%
grade 2 events	4402	4640	3692	3865	13555	7943
	9%	9%	7%	7%	21%	12%
grade 3 events	1565	1468	1510	1532	1322	3106
	3%	3%	3%	3%	2%	5%
grade 4 events	1504	1504	1591	1615	1271	2891
	3%	3%	3%	3%	2%	4%
grade 5 events	1470	1475	1439	1573	3033	3871
	3%	3%	2%	3%	4%	6%
grade 6 events	3401	3554	3280	3367	16172	15573
	7%	7%	6%	6%	25%	25%
grade 7 events	22235	23028	24474	24298	23329	21936
	47%	48%	50%	49%	37%	35%

2.2 Compared Parameters

Parameter	Planned	Actual	Parameter	Planned	Actual
Instrument	ACIS	ACIS	Obspar format version number	7	7
Detector	ACIS-012357	ACIS-012357	Obspar file type	PREDICTED	ACTUAL
Grating	NONE	NONE	Obspar update status	NONE	UPDATED
Data mode	FAINT	FAINT	Number of optional ACIS chips dropped	0	0
Observation mode	SECONDARY	SECONDARY	On-chip summing requested	N	N
[deg] Pointing RA	0	25.0144218412562	Subarray requested	NONE	NONE
[deg] Pointing Dec	0	-17.47742826280157	Alternating exposures requested	N	N
[deg] Pointing Roll	0.0	17.30295731303636	[s] Primary exposure time	3.2	3.2
[mm] SIM focus pos	-1.429586	-1.428180813131781			
[mm] SIM defocus	0.1037507710433287	0.1051558262725154			
[mm] SIM translation stage pos	250.455976	250.466033080201			
[mm] SIM translation stage offset	0	-0.01005468664627074			
[s] Observation start time (MET)	403275362.151848	403275361.12684			
Observation start date	2010-10-12T12:56:02	2010-10-12T12:56:01			
[s] Observation end time (MET)	403281995.952189	403281994.92719			
Observation end date	2010-10-12T14:46:36	2010-10-12T14:46:34			
Read mode	TIMED	TIMED			

2.3 Star Slots

2.4 FID Slots

A Summary

A.1 Status

V&V Scientist	Beth Sundheim
V&V Date (YYYY-MM-DD)	2012.07.13
V&V Edition	1
V&V Disposition and Status	OK
V&V Charge Time	3.2799999878407

A.2 Comments