

# V&V Reference Report

## L2 ASCDS Version : 8.4.5

Observation 55974 - L2 Version 2  
Chandra X-Ray Center

L2 Processing Date : Jul 5 2012

## Contents

<b>1</b>	<b>Front</b>	<b>2</b>
<b>2</b>	<b>OBI</b>	<b>3</b>
2.1	OBI . . . . .	3
2.1.1	Images . . . . .	3
2.1.2	Bias . . . . .	3
2.1.3	Parameters . . . . .	4
2.1.4	Events . . . . .	4
2.2	Compared Parameters . . . . .	5
2.3	Star Slots . . . . .	6
2.4	FID Slots . . . . .	6
<b>A</b>	<b>Summary</b>	<b>7</b>
A.1	Status . . . . .	7
A.2	Comments . . . . .	7

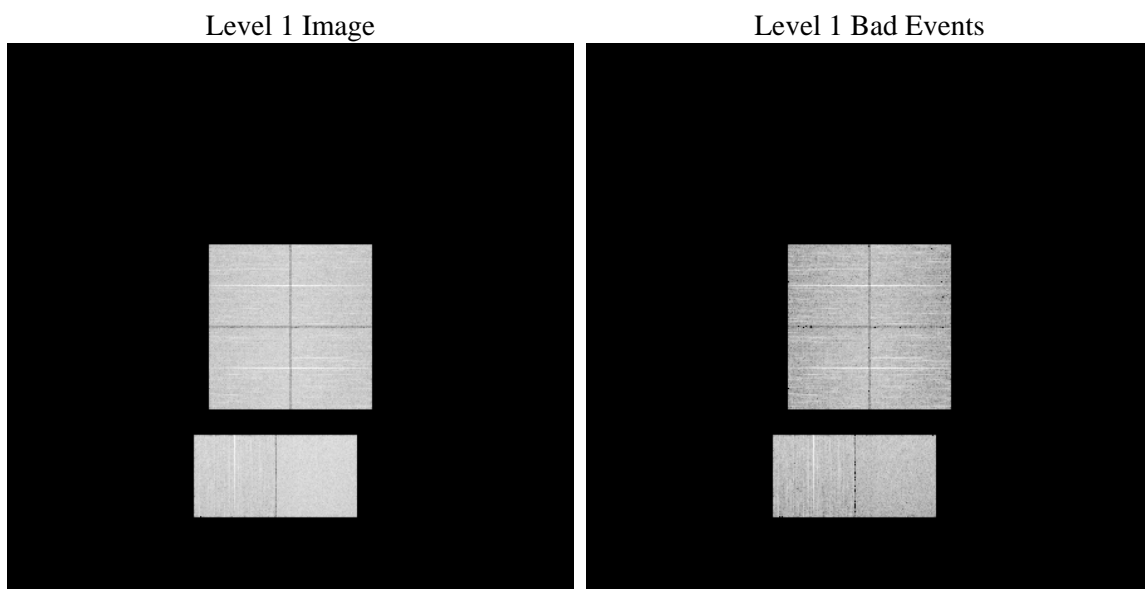
# 1 Front

seq_num	&#160	Sequence number
obs_id	55974	Observation id
title	ACIS-012367 diagnostics	Proposal title
observer	CHANDRA engineering request/realtime commanding	Principal investig
object	&#160	Source name
dtcycle	0	&#160
cycle	P	events from which exps? Prim/Second/Both
ra_targ	0.0	Observer's specified target RA [deg]
dec_targ	0.0	Observer's specified target Dec [deg]
ra_nom	355.62721623813	Nominal RA [deg]
dec_nom	37.721943245284	Nominal Dec [deg]
roll_nom	222.8607191185	Nominal Roll [deg]
revision	2	Processing version of data
ontime	8137.5999697447	Sum of GTIs [s]
livetime	8034.5567790533	Livetime [s]
ontime0	8134.3589396477	Sum of GTIs [s]
ontime1	8134.3589595556	Sum of GTIs [s]
ontime2	8134.3589893579	Sum of GTIs [s]
ontime3	8134.3589595556	Sum of GTIs [s]
ontime6	8131.1179791093	Sum of GTIs [s]
ontime7	8137.5999697447	Sum of GTIs [s]
l2events	359464	Number of level 2 events

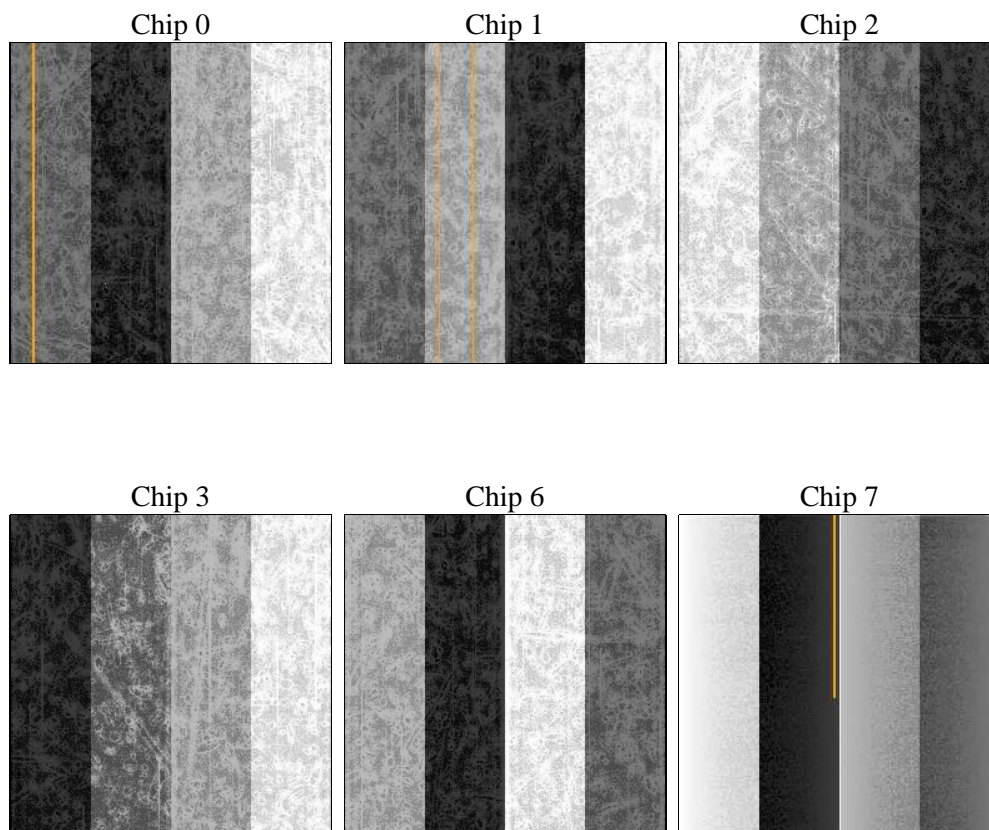
## 2 OBI

### 2.1 OBI

#### 2.1.1 Images



#### 2.1.2 Bias



### 2.1.3 Parameters

obi_num	0	Obi number	sched_exp_time	0.0	[s] Scheduled observation exposure time
ascdsver	8.4.5	Processing system revision	ontime	8137.5999697447	Sum of GTIs [s]
caldsver	4.5.0	&#160	ontime0	8134.3589396477	Sum of GTIs [s]
date	2012-07-05T06:35:29	Date and time of file creation	ontime1	8134.3589595556	Sum of GTIs [s]
revision	2	Processing version of data	ontime2	8134.3589893579	Sum of GTIs [s]
			ontime3	8134.3589595556	Sum of GTIs [s]
			ontime6	8131.1179791093	Sum of GTIs [s]
			ontime7	8137.5999697447	Sum of GTIs [s]
			l1events	771159	Number of level 1 events

### 2.1.4 Events

	ccd 0	ccd 1	ccd 2	ccd 3	ccd 6	ccd 7		ccd 0	ccd 1	ccd 2	ccd 3	ccd 6	ccd 7
level 1 events	118300	118722	121799	125694	130265	156379	grade 0 events	31041	30446	31342	31975	31272	15853
rejected events	60935	60761	64540	67755	70775	65823		26%	25%	25%	25%	24%	10%
rejected %	51%	51%	52%	53%	54%	42%	grade 1 events	231	196	252	228	193	121
								0%	0%	0%	0%	0%	0%
							grade 2 events	10648	11187	10364	10323	10959	19780
								9%	9%	8%	8%	8%	12%
							grade 3 events	3931	3967	3836	3960	4104	8332
								3%	3%	3%	3%	3%	5%
							grade 4 events	3846	4027	4110	3993	3964	8233
								3%	3%	3%	3%	3%	5%
							grade 5 events	3868	3881	3499	4184	4261	10310
								3%	3%	2%	3%	3%	6%
							grade 6 events	9044	9450	8711	8749	10359	40042
								7%	7%	7%	6%	7%	25%
							grade 7 events	55691	55568	59685	62282	65153	53708
								47%	46%	49%	49%	50%	34%

## 2.2 Compared Parameters

Parameter	Planned	Actual
Instrument	ACIS	ACIS
Detector	ACIS-012367	ACIS-012367
Grating	NONE	NONE
Data mode	FAINT	FAINT
Observation mode	SECONDARY	SECONDARY
[deg] Pointing RA	0	355.6272162381257
[deg] Pointing Dec	0	37.72194324528365
[deg] Pointing Roll	0.0	222.8607191184983
[mm] SIM focus pos	-1.4281808131	-1.4281808131
[mm] SIM defocus	0.1051557500557434	0.1051557500557434
[mm] SIM translation stage pos	250.4660330802	250.4660330802
[mm] SIM translation stage offset	-0.01005726120527584	-0.01005726120527584
[s] Observation start time (MET)	403469901.011856	403469901.011856
Observation start date	2010-10-14T18:58:21	2010-10-14T18:58:21
[s] Observation end time (MET)	403479449.387407	403479449.387407
Observation end date	2010-10-14T21:37:29	2010-10-14T21:37:29
Read mode	TIMED	TIMED

Parameter	Planned	Actual
Obspar format version number	7	7
Obspar file type	PREDICTED	ACTUAL
Obspar update status	OVERRIDE	OVERRIDE
Number of optional ACIS chips dropped	0	0
On-chip summing requested	N	N
Subarray requested	NONE	NONE
Alternating exposures requested	N	N
[s] Primary exposure time	3.2	3.2

## **2.3 Star Slots**

## **2.4 FID Slots**

## A Summary

### A.1 Status

V&V Scientist	Jen Lauer
V&V Date (YYYY-MM-DD)	2012.07.13
V&V Edition	1
V&V Disposition and Status	OK
V&V Charge Time	8.1375999697447

### A.2 Comments