

# V&V Reference Report

## L2 ASCDS Version : 8.4.5

Observation 55951 - L2 Version 2  
Chandra X-Ray Center

L2 Processing Date : Jul 5 2012

## Contents

<b>1</b>	<b>Front</b>	<b>2</b>
<b>2</b>	<b>OBI</b>	<b>3</b>
2.1	OBI . . . . .	3
2.1.1	Images . . . . .	3
2.1.2	Bias . . . . .	3
2.1.3	Parameters . . . . .	4
2.1.4	Events . . . . .	4
2.2	Compared Parameters . . . . .	5
2.3	Star Slots . . . . .	6
2.4	FID Slots . . . . .	6
<b>A</b>	<b>Summary</b>	<b>7</b>
A.1	Status . . . . .	7
A.2	Comments . . . . .	7

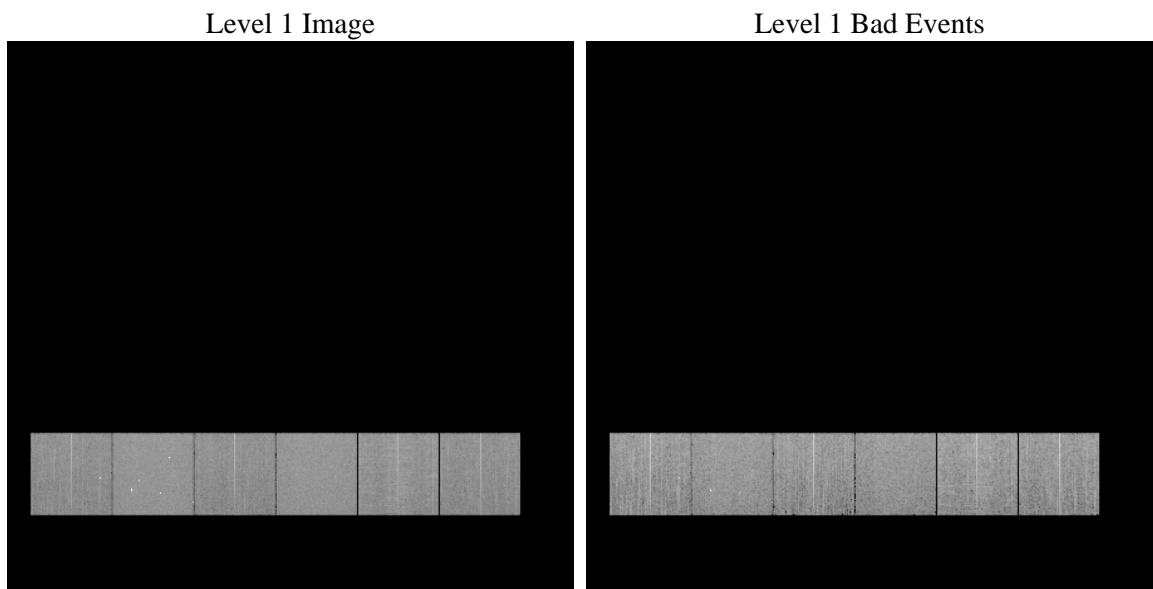
# 1 Front

seq_num	&#160	Sequence number
obs_id	55951	Observation id
title	ACIS-456789 diagnostics	Proposal title
observer	CHANDRA engineering request/realtime commanding	Principal investig
object	&#160	Source name
dtcycle	0	&#160
cycle	P	events from which exps? Prim/Second/Both
ra_targ	0.0	Observer's specified target RA [deg]
dec_targ	0.0	Observer's specified target Dec [deg]
ra_nom	306.40762611891	Nominal RA [deg]
dec_nom	4.5179183226632	Nominal Dec [deg]
roll_nom	275.08583986658	Nominal Roll [deg]
revision	2	Processing version of data
ontime	7928.1309305429	Sum of GTIs [s]
livetime	7827.7401629531	Livetime [s]
ontime4	7928.007810533	Sum of GTIs [s]
ontime5	7928.0898905396	Sum of GTIs [s]
ontime6	7928.0488505363	Sum of GTIs [s]
ontime7	7928.1309305429	Sum of GTIs [s]
ontime8	7927.9667705297	Sum of GTIs [s]
ontime9	7928.1719705462	Sum of GTIs [s]
l2events	431204	Number of level 2 events

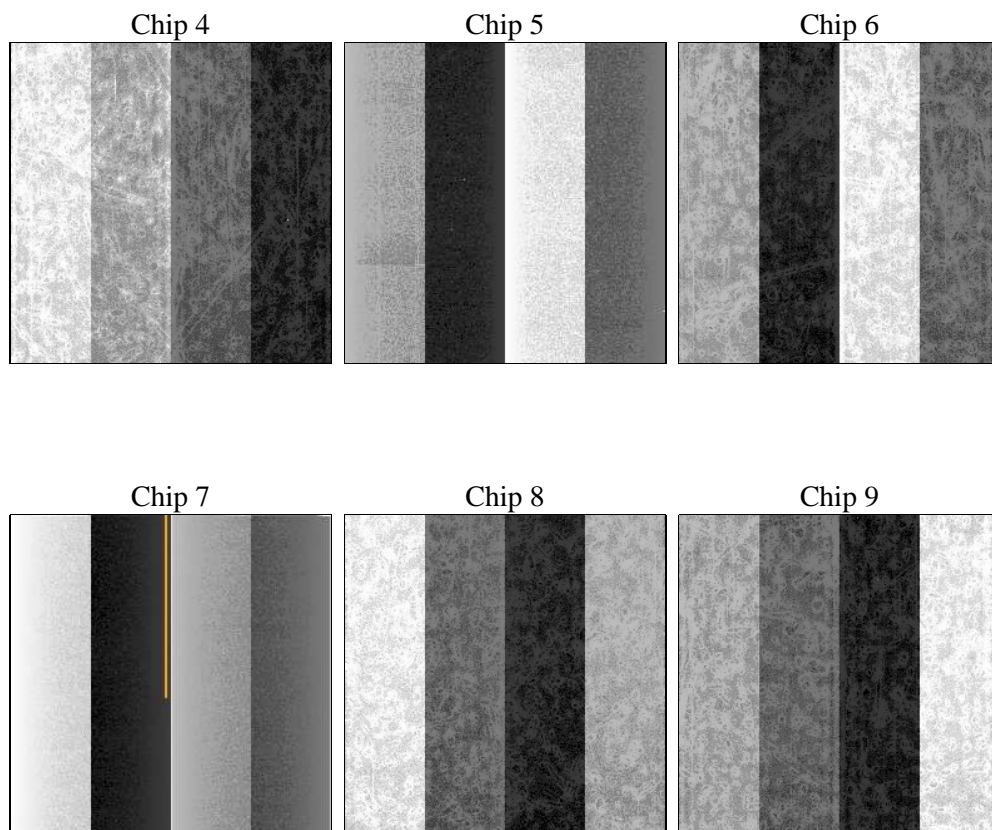
## 2 OBI

### 2.1 OBI

#### 2.1.1 Images



#### 2.1.2 Bias



### 2.1.3 Parameters

obi_num	1	Obi number	sched_exp_time	0.0	[s] Scheduled observation exposure time
ascdsver	8.4.5	Processing system revision	ontime	7928.1309305429	Sum of GTIs [s]
caldsver	4.5.0	&#160	ontime4	7928.007810533	Sum of GTIs [s]
date	2012-07-05T08:07:01	Date and time of file creation	ontime5	7928.0898905396	Sum of GTIs [s]
revision	2	Processing version of data	ontime6	7928.0488505363	Sum of GTIs [s]
			ontime7	7928.1309305429	Sum of GTIs [s]
			ontime8	7927.9667705297	Sum of GTIs [s]
			ontime9	7928.1719705462	Sum of GTIs [s]
			l1events	915405	Number of level 1 events

### 2.1.4 Events

	ccd 4	ccd 5	ccd 6	ccd 7	ccd 8	ccd 9		ccd 4	ccd 5	ccd 6	ccd 7	ccd 8	ccd 9
level 1 events	139330	174147	137662	165379	160994	137893	grade 0 events	37809	16724	34784	18490	39452	35256
rejected events	74797	72898	71424	68303	79983	72684		27%	9%	25%	11%	24%	25%
rejected %	53%	41%	51%	41%	49%	52%	grade 1 events	358	335	197	133	275	240
								0%	0%	0%	0%	0%	0%
							grade 2 events	10483	36986	12444	22116	15821	11666
								7%	21%	9%	13%	9%	8%
							grade 3 events	4593	4388	4505	8928	6204	4553
								3%	2%	3%	5%	3%	3%
							grade 4 events	4656	4077	4367	8965	6013	4445
								3%	2%	3%	5%	3%	3%
							grade 5 events	4001	8958	4124	10400	5325	4650
								2%	5%	2%	6%	3%	3%
							grade 6 events	9539	42586	12867	42111	16703	12029
								6%	24%	9%	25%	10%	8%
							grade 7 events	67891	60093	64374	54236	71201	65054
								48%	34%	46%	32%	44%	47%

## 2.2 Compared Parameters

Parameter	Planned	Actual	Parameter	Planned	Actual
Instrument	ACIS	ACIS	Obspar format version number	7	7
Detector	ACIS-456789	ACIS-456789	Obspar file type	PREDICTED	ACTUAL
Grating	NONE	NONE	Obspar update status	OVERRIDE	OVERRIDE
Data mode	FAINT	FAINT	Number of optional ACIS chips dropped	0	0
Observation mode	SECONDARY	SECONDARY	On-chip summing requested	N	N
[deg] Pointing RA	0	306.4076261189077	Subarray requested	NONE	NONE
[deg] Pointing Dec	0	4.517918322663225	Alternating exposures requested	N	N
[deg] Pointing Roll	0.0	275.0858398665776	[s] Primary exposure time	3.2	3.2
[mm] SIM focus pos	-1.4281808131	-1.4281808131			
[mm] SIM defocus	0.1051557500557434	0.1051557500557434			
[mm] SIM translation stage pos	250.4635187649	250.4635187649			
[mm] SIM translation stage offset	-0.007542945905271381	-0.007542945905271381			
[s] Observation start time (MET)	403925593.485282	403925593.485282			
Observation start date	2010-10-20T01:33:13	2010-10-20T01:33:13			
[s] Observation end time (MET)	403935546.341804	403935546.341804			
Observation end date	2010-10-20T04:19:06	2010-10-20T04:19:06			
Read mode	TIMED	TIMED			

## **2.3 Star Slots**

## **2.4 FID Slots**

## A Summary

### A.1 Status

V&V Scientist	Beth Sundheim
V&V Date (YYYY-MM-DD)	2012.07.11
V&V Edition	1
V&V Disposition and Status	OK
V&V Charge Time	7.9281309305429

### A.2 Comments