

V&V Reference Report

L2 ASCDS Version : 8.4.5

Observation 55946 - L2 Version 2
Chandra X-Ray Center

L2 Processing Date : Jul 5 2012

Contents

1	Front	2
2	OBI	3
2.1	OBI	3
2.1.1	Images	3
2.1.2	Bias	3
2.1.3	Parameters	4
2.1.4	Events	4
2.2	Compared Parameters	5
2.3	Star Slots	6
2.4	FID Slots	6
A	Summary	7
A.1	Status	7
A.2	Comments	7

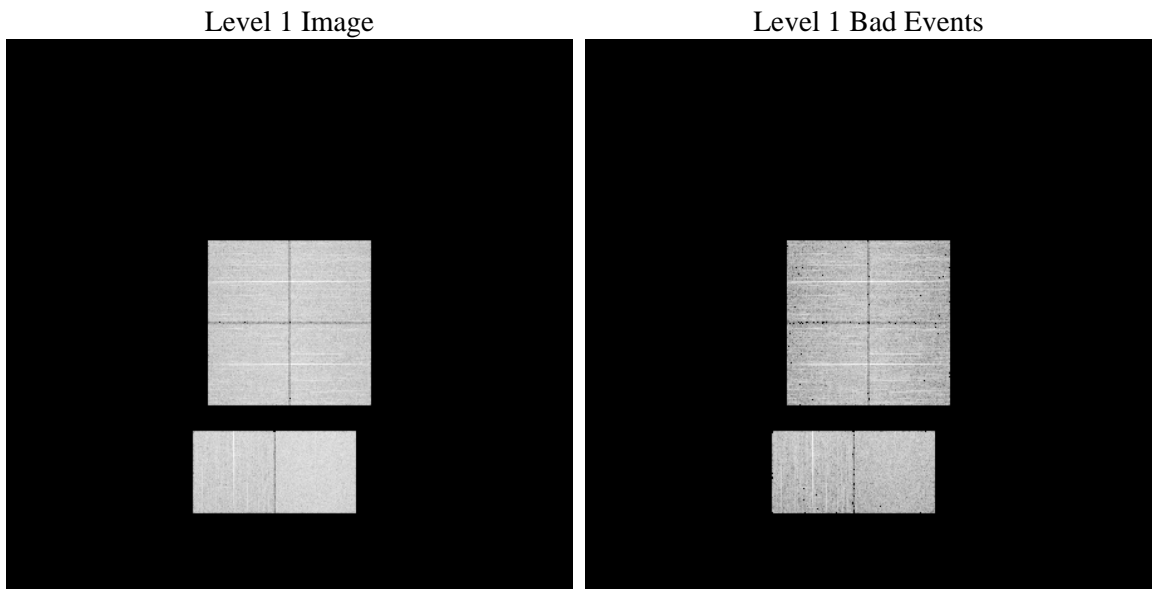
1 Front

seq_num	 	Sequence number
obs_id	55946	Observation id
title	ACIS-012367 diagnostics	Proposal title
observer	CHANDRA engineering request/realtime commanding	Principal investig
object	 	Source name
dtcycle	0	
cycle	P	events from which exps? Prim/Second/Both
ra_targ	0.0	Observer's specified target RA [deg]
dec_targ	0.0	Observer's specified target Dec [deg]
ra_nom	40.511550770358	Nominal RA [deg]
dec_nom	-8.9736382764895	Nominal Dec [deg]
roll_nom	33.933428836215	Nominal Roll [deg]
revision	2	Processing version of data
ontime	6168.3549727201	Sum of GTIs [s]
livetime	6090.2475479181	Livetime [s]
ontime0	6168.3139327168	Sum of GTIs [s]
ontime1	6168.2728927135	Sum of GTIs [s]
ontime2	6168.2318527102	Sum of GTIs [s]
ontime3	6168.3960127234	Sum of GTIs [s]
ontime6	6168.1908127069	Sum of GTIs [s]
ontime7	6168.3549727201	Sum of GTIs [s]
l2events	269947	Number of level 2 events

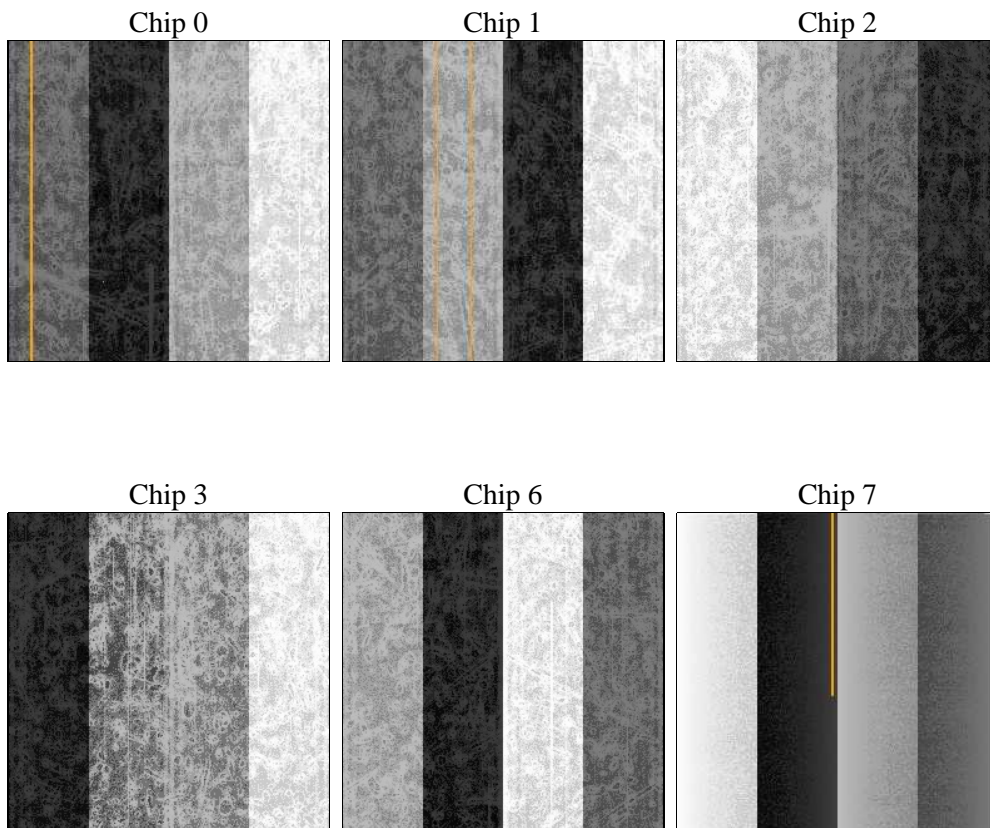
2 OBI

2.1 OBI

2.1.1 Images



2.1.2 Bias



2.1.3 Parameters

obi_num	1	Obi number	sched_exp_time	0.0	[s] Scheduled observation exposure time
ascdsver	8.4.5	Processing system revision	ontime	6168.3549727201	Sum of GTIs [s]
caldbver	4.5.0	 	ontime0	6168.3139327168	Sum of GTIs [s]
date	2012-07-05T09:00:25	Date and time of file creation	ontime1	6168.2728927135	Sum of GTIs [s]
revision	2	Processing version of data	ontime2	6168.2318527102	Sum of GTIs [s]
			ontime3	6168.3960127234	Sum of GTIs [s]
			ontime6	6168.1908127069	Sum of GTIs [s]
			ontime7	6168.3549727201	Sum of GTIs [s]
			l1events	573649	Number of level 1 events

2.1.4 Events

	ccd 0	ccd 1	ccd 2	ccd 3	ccd 6	ccd 7		ccd 0	ccd 1	ccd 2	ccd 3	ccd 6	ccd 7
level 1 events	88756	88879	90851	92538	94400	118225	grade 0 events	23145	22952	23373	23584	23474	12281
rejected events	45782	45356	47957	49289	50083	49500		26%	25%	25%	25%	24%	10%
rejected %	51%	51%	52%	53%	53%	41%	grade 1 events	172	126	176	142	143	124
								0%	0%	0%	0%	0%	0%
							grade 2 events	8114	8415	7820	7888	8206	15142
								9%	9%	8%	8%	8%	12%
							grade 3 events	2949	2986	3059	3058	2971	6316
								3%	3%	3%	3%	3%	5%
							grade 4 events	2868	2993	3022	3040	2835	6413
								3%	3%	3%	3%	3%	5%
							grade 5 events	2865	2907	2647	3185	3170	7973
								3%	3%	2%	3%	3%	6%
							grade 6 events	6623	6911	6377	6415	7617	29698
								7%	7%	7%	6%	8%	25%
							grade 7 events	42020	41589	44377	45226	45984	40278
								47%	46%	48%	48%	48%	34%

2.2 Compared Parameters

Parameter	Planned	Actual
Instrument	ACIS	ACIS
Detector	ACIS-012367	ACIS-012367
Grating	NONE	NONE
Data mode	FAINT	FAINT
Observation mode	SECONDARY	SECONDARY
[deg] Pointing RA	0	40.51155077035847
[deg] Pointing Dec	0	-8.973638276489455
[deg] Pointing Roll	0.0	33.93342883621536
[mm] SIM focus pos	-1.4281808131	-1.4281808131
[mm] SIM defocus	0.1051557500557434	0.1051557500557434
[mm] SIM translation stage pos	250.4660330802	250.4660330802
[mm] SIM translation stage offset	-0.01005726120527584	-0.01005726120527584
[s] Observation start time (MET)	404157372.64721	404157372.64721
Observation start date	2010-10-22T17:56:13	2010-10-22T17:56:12
[s] Observation end time (MET)	404164904.446207	404164904.446207
Observation end date	2010-10-22T20:01:44	2010-10-22T20:01:44
Read mode	TIMED	TIMED

Parameter	Planned	Actual
Obspar format version number	7	7
Obspar file type	PREDICTED	ACTUAL
Obspar update status	OVERRIDE	OVERRIDE
Number of optional ACIS chips dropped	0	0
On-chip summing requested	N	N
Subarray requested	NONE	NONE
Alternating exposures requested	N	N
[s] Primary exposure time	3.2	3.2

2.3 Star Slots

2.4 FID Slots

A Summary

A.1 Status

V&V Scientist	Beth Sundheim
V&V Date (YYYY-MM-DD)	2012.07.13
V&V Edition	1
V&V Disposition and Status	OK
V&V Charge Time	6.1683549727201

A.2 Comments