

# V&V Reference Report

## L2 ASCDS Version : 8.4.5

Observation 55921 - L2 Version 2  
Chandra X-Ray Center

L2 Processing Date : Jul 5 2012

## Contents

<b>1</b>	<b>Front</b>	<b>2</b>
<b>2</b>	<b>OBI</b>	<b>3</b>
2.1	OBI . . . . .	3
2.1.1	Images . . . . .	3
2.1.2	Bias . . . . .	3
2.1.3	Parameters . . . . .	4
2.1.4	Events . . . . .	4
2.2	Compared Parameters . . . . .	5
2.3	Star Slots . . . . .	6
2.4	FID Slots . . . . .	6
<b>A</b>	<b>Summary</b>	<b>7</b>
A.1	Status . . . . .	7
A.2	Comments . . . . .	7

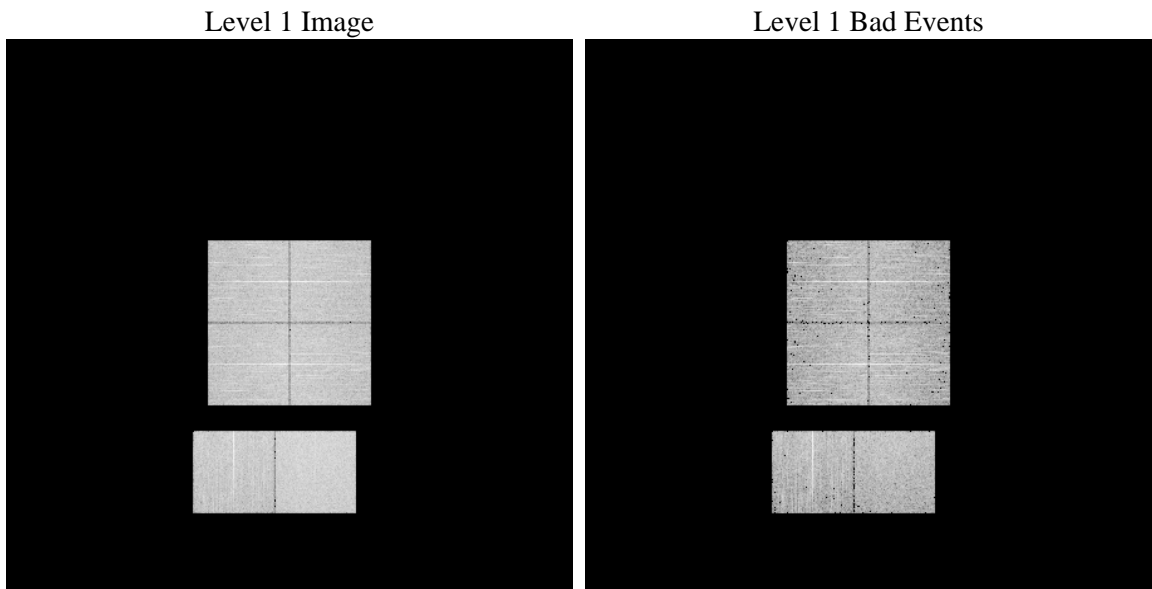
# 1 Front

seq_num	&#160	Sequence number
obs_id	55921	Observation id
title	ACIS-012367 diagnostics	Proposal title
observer	CHANDRA engineering request/realtime commanding	Principal investig
object	&#160	Source name
dtcycle	0	&#160
cycle	P	events from which exps? Prim/Second/Both
ra_targ	0.0	Observer's specified target RA [deg]
dec_targ	0.0	Observer's specified target Dec [deg]
ra_nom	43.543432498374	Nominal RA [deg]
dec_nom	-2.4881493630549	Nominal Dec [deg]
roll_nom	28.034143712848	Nominal Roll [deg]
revision	2	Processing version of data
ontime	5291.6476177573	Sum of GTIs [s]
livetime	5224.6415893736	Livetime [s]
ontime0	5291.606577754	Sum of GTIs [s]
ontime1	5291.5655377507	Sum of GTIs [s]
ontime2	5288.2834975123	Sum of GTIs [s]
ontime3	5291.6886577606	Sum of GTIs [s]
ontime6	5291.4834577441	Sum of GTIs [s]
ontime7	5291.6476177573	Sum of GTIs [s]
l2events	238532	Number of level 2 events

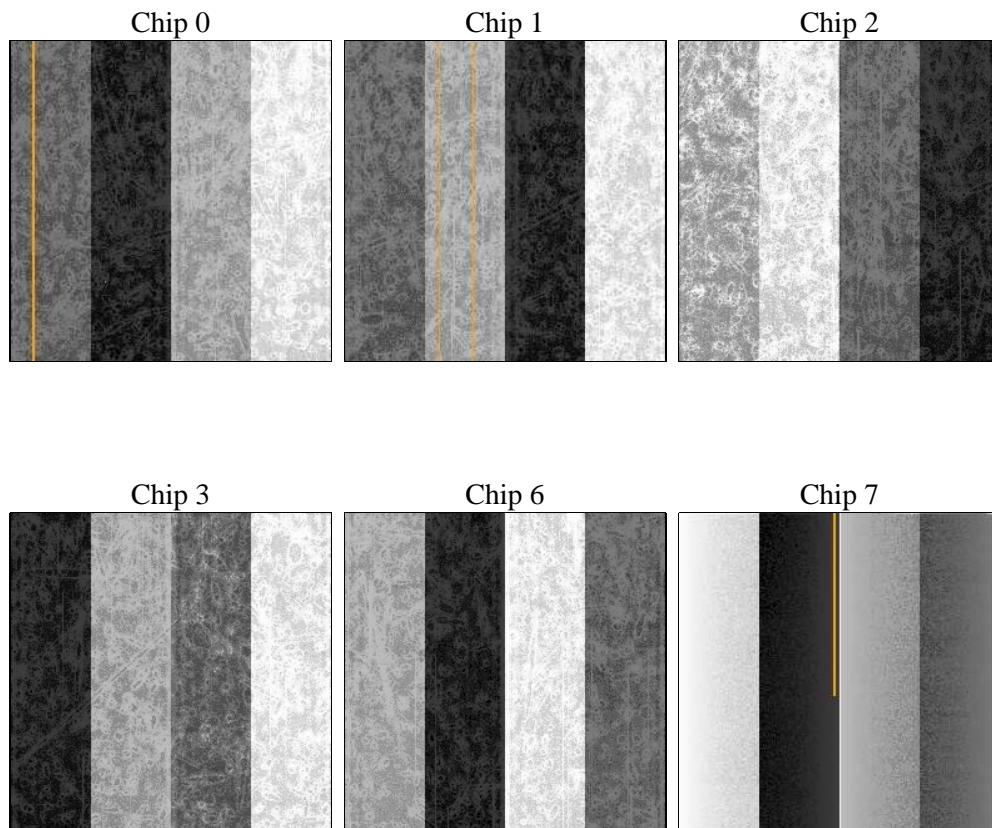
## 2 OBI

### 2.1 OBI

#### 2.1.1 Images



#### 2.1.2 Bias



### 2.1.3 Parameters

obi_num	0	Obi number	sched_exp_time	0.0	[s] Scheduled observation exposure time
ascdsver	8.4.5	Processing system revision	ontime	5291.6476177573	Sum of GTIs [s]
caldbver	4.5.0	&#160	ontime0	5291.606577754	Sum of GTIs [s]
date	2012-07-05T23:10:22	Date and time of file creation	ontime1	5291.5655377507	Sum of GTIs [s]
revision	2	Processing version of data	ontime2	5288.2834975123	Sum of GTIs [s]
			ontime3	5291.6886577606	Sum of GTIs [s]
			ontime6	5291.4834577441	Sum of GTIs [s]
			ontime7	5291.6476177573	Sum of GTIs [s]
			l1events	493692	Number of level 1 events

### 2.1.4 Events

	ccd 0	ccd 1	ccd 2	ccd 3	ccd 6	ccd 7		ccd 0	ccd 1	ccd 2	ccd 3	ccd 6	ccd 7
level 1 events	76673	76163	78882	79911	80822	101241	grade 0 events	19850	19826	20535	20788	20192	10430
rejected events	38627	37753	40822	41264	41297	41617		25%	26%	26%	26%	24%	10%
rejected %	50%	49%	51%	51%	51%	41%	grade 1 events	130	117	138	159	122	76
								0%	0%	0%	0%	0%	0%
							grade 2 events	6907	7467	6461	6801	7272	12873
								9%	9%	8%	8%	8%	12%
							grade 3 events	2620	2488	2596	2663	2632	5327
								3%	3%	3%	3%	3%	5%
							grade 4 events	2535	2497	2596	2685	2586	5272
								3%	3%	3%	3%	3%	5%
							grade 5 events	2487	2460	2332	2606	2594	6603
								3%	3%	2%	3%	3%	6%
							grade 6 events	6134	6132	5872	5710	6843	25722
								8%	8%	7%	7%	8%	25%
							grade 7 events	36010	35176	38352	38499	38581	34938
								46%	46%	48%	48%	47%	34%

## 2.2 Compared Parameters

Parameter	Planned	Actual	Parameter	Planned	Actual
Instrument	ACIS	ACIS	Obspar format version number	7	7
Detector	ACIS-012367	ACIS-012367	Obspar file type	PREDICTED	ACTUAL
Grating	NONE	NONE	Obspar update status	NONE	UPDATED
Data mode	FAINT	FAINT	Number of optional ACIS chips dropped	0	0
Observation mode	SECONDARY	SECONDARY	On-chip summing requested	N	N
[deg] Pointing RA	0	43.54343249837385	Subarray requested	NONE	NONE
[deg] Pointing Dec	0	-2.488149363054895	Alternating exposures requested	N	N
[deg] Pointing Roll	0.0	28.03414371284839	[s] Primary exposure time	3.2	3.2
[mm] SIM focus pos	-1.429586	-1.428180813131781			
[mm] SIM defocus	0.1037507710433287	0.1051558262725154			
[mm] SIM translation stage pos	250.455976	250.466033080201			
[mm] SIM translation stage offset	0	-0.01005468664627074			
[s] Observation start time (MET)	404843606.082521	404843605.05752			
Observation start date	2010-10-30T16:33:26	2010-10-30T16:33:25			
[s] Observation end time (MET)	404850668.332884	404850667.30789			
Observation end date	2010-10-30T18:31:08	2010-10-30T18:31:07			
Read mode	TIMED	TIMED			

## **2.3 Star Slots**

## **2.4 FID Slots**

## A Summary

### A.1 Status

V&V Scientist	Beth Sundheim
V&V Date (YYYY-MM-DD)	2012.07.16
V&V Edition	1
V&V Disposition and Status	OK
V&V Charge Time	5.2916476177573

### A.2 Comments