

V&V Reference Report

L2 ASCDS Version : 8.4.5

Observation 55909 - L2 Version 2
Chandra X-Ray Center

L2 Processing Date : Jul 5 2012

Contents

1	Front	2
2	OBI	3
2.1	OBI	3
2.1.1	Images	3
2.1.2	Bias	3
2.1.3	Parameters	4
2.1.4	Events	4
2.2	Compared Parameters	5
2.3	Star Slots	6
2.4	FID Slots	6
A	Summary	7
A.1	Status	7
A.2	Comments	7

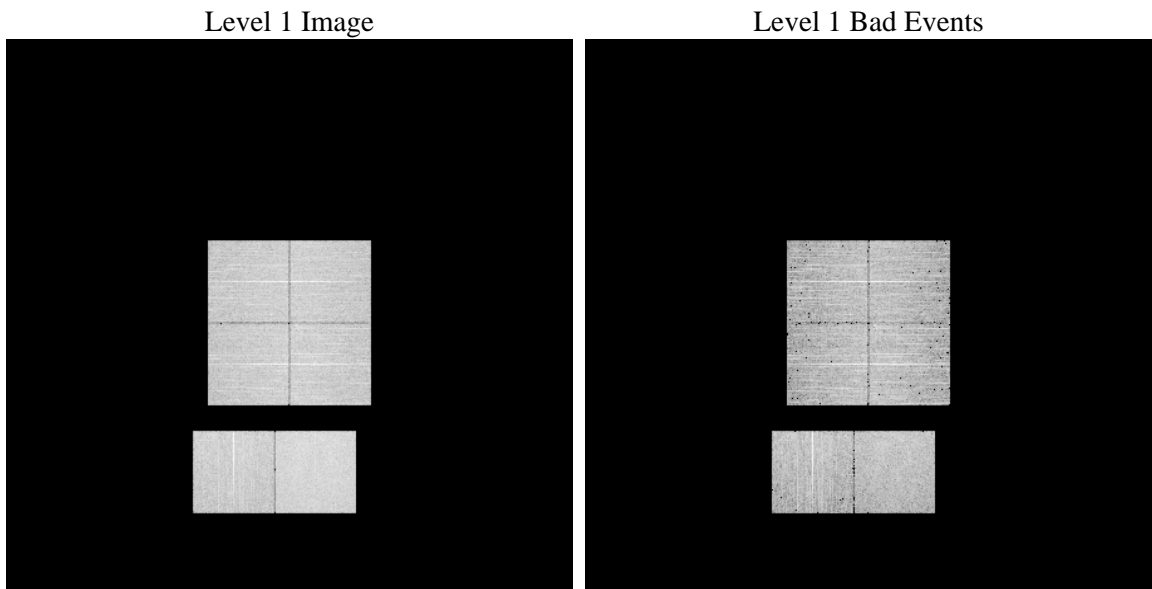
1 Front

seq_num	 	Sequence number
obs_id	55909	Observation id
title	ACIS-012367 diagnostics	Proposal title
observer	CHANDRA engineering request/realtime commanding	Principal investig
object	 	Source name
dtcycle	0	
cycle	P	events from which exps? Prim/Second/Both
ra_targ	0.0	Observer's specified target RA [deg]
dec_targ	0.0	Observer's specified target Dec [deg]
ra_nom	46.017442428023	Nominal RA [deg]
dec_nom	-7.9770344238073	Nominal Dec [deg]
roll_nom	20.191872001576	Nominal Roll [deg]
revision	2	Processing version of data
ontime	6105.426797688	Sum of GTIs [s]
livetime	6028.116207329	Livetime [s]
ontime0	6105.4678376913	Sum of GTIs [s]
ontime1	6105.5088776946	Sum of GTIs [s]
ontime2	6105.5499176979	Sum of GTIs [s]
ontime3	6105.3857576847	Sum of GTIs [s]
ontime6	6108.7999773026	Sum of GTIs [s]
ontime7	6105.426797688	Sum of GTIs [s]
l2events	263125	Number of level 2 events

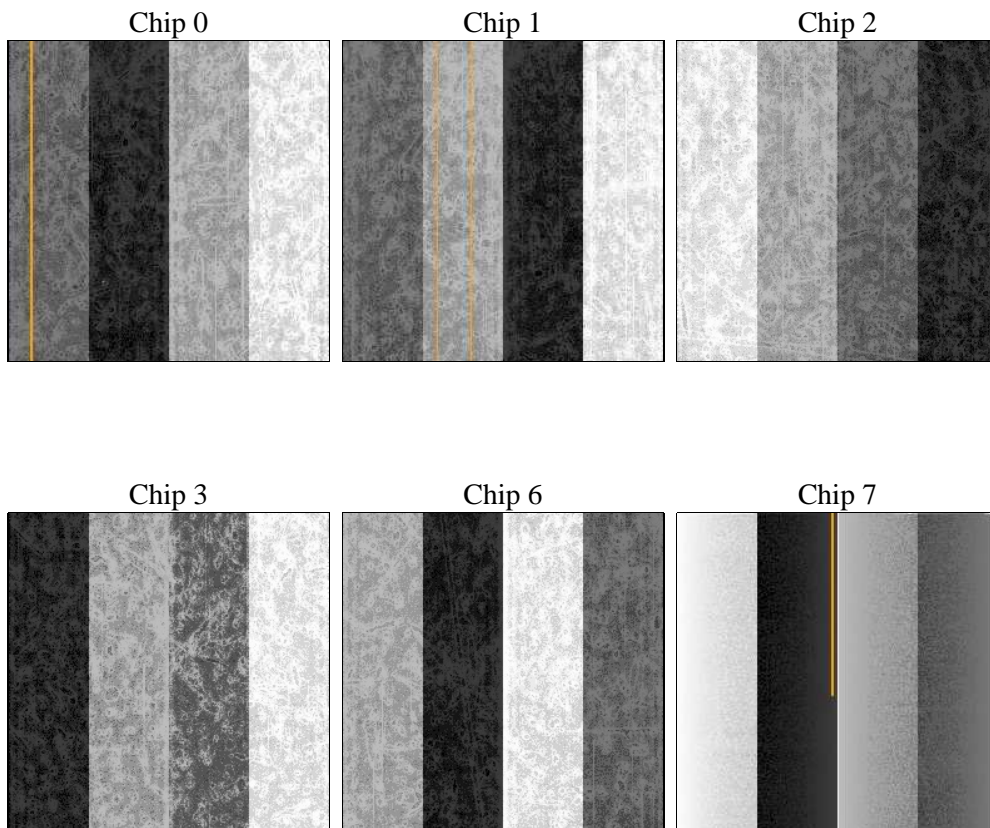
2 OBI

2.1 OBI

2.1.1 Images



2.1.2 Bias



2.1.3 Parameters

obi_num	0	Obi number	sched_exp_time	0.0	[s] Scheduled observation exposure time
ascdsver	8.4.5	Processing system revision	ontime	6105.426797688	Sum of GTIs [s]
caldbver	4.5.0	 	ontime0	6105.4678376913	Sum of GTIs [s]
date	2012-07-06T00:19:16	Date and time of file creation	ontime1	6105.5088776946	Sum of GTIs [s]
revision	2	Processing version of data	ontime2	6105.5499176979	Sum of GTIs [s]
			ontime3	6105.3857576847	Sum of GTIs [s]
			ontime6	6108.7999773026	Sum of GTIs [s]
			ontime7	6105.426797688	Sum of GTIs [s]
			l1events	551879	Number of level 1 events

2.1.4 Events

	ccd 0	ccd 1	ccd 2	ccd 3	ccd 6	ccd 7		ccd 0	ccd 1	ccd 2	ccd 3	ccd 6	ccd 7
level 1 events	85162	85638	85772	90095	90767	114445	grade 0 events	22333	21845	22516	22624	22259	11575
rejected events	43247	43338	44021	48048	47394	47446		26%	25%	26%	25%	24%	10%
rejected %	50%	50%	51%	53%	52%	41%	grade 1 events	150	121	153	157	147	98
								0%	0%	0%	0%	0%	0%
							grade 2 events	7648	8139	7402	7490	7924	14400
								8%	9%	8%	8%	8%	12%
							grade 3 events	2793	2755	2867	2877	2834	6040
								3%	3%	3%	3%	3%	5%
							grade 4 events	2785	2852	2843	2865	2867	6037
								3%	3%	3%	3%	3%	5%
							grade 5 events	2700	2866	2641	2994	2981	7457
								3%	3%	3%	3%	3%	6%
							grade 6 events	6356	6709	6123	6191	7489	28947
								7%	7%	7%	6%	8%	25%
							grade 7 events	40397	40351	41227	44897	44266	39891
								47%	47%	48%	49%	48%	34%

2.2 Compared Parameters

Parameter	Planned	Actual	Parameter	Planned	Actual
Instrument	ACIS	ACIS	Obspar format version number	7	7
Detector	ACIS-012367	ACIS-012367	Obspar file type	PREDICTED	ACTUAL
Grating	NONE	NONE	Obspar update status	NONE	UPDATED
Data mode	FAINT	FAINT	Number of optional ACIS chips dropped	0	0
Observation mode	SECONDARY	SECONDARY	On-chip summing requested	N	N
[deg] Pointing RA	0	46.01744242802283	Subarray requested	NONE	NONE
[deg] Pointing Dec	0	-7.977034423807262	Alternating exposures requested	N	N
[deg] Pointing Roll	0.0	20.19187200157631	[s] Primary exposure time	3.2	3.2
[mm] SIM focus pos	-1.429586	-1.428180813131781			
[mm] SIM defocus	0.1037507710433287	0.1051558262725154			
[mm] SIM translation stage pos	250.455976	250.466033080201			
[mm] SIM translation stage offset	0	-0.01005468664627074			
[s] Observation start time (MET)	405106270.546044	405106269.52105			
Observation start date	2010-11-02T17:31:11	2010-11-02T17:31:09			
[s] Observation end time (MET)	405114273.746456	405114272.72146			
Observation end date	2010-11-02T19:44:34	2010-11-02T19:44:32			
Read mode	TIMED	TIMED			

2.3 Star Slots

2.4 FID Slots

A Summary

A.1 Status

V&V Scientist	Beth Sundheim
V&V Date (YYYY-MM-DD)	2012.07.16
V&V Edition	1
V&V Disposition and Status	OK
V&V Charge Time	6.105426797688

A.2 Comments