

V&V Reference Report

L2 ASCDS Version : 8.4.5

Observation 55881 - L2 Version 2
Chandra X-Ray Center

L2 Processing Date : Jul 6 2012

Contents

1	Front	2
2	OBI	3
2.1	OBI	3
2.1.1	Images	3
2.1.2	Bias	3
2.1.3	Parameters	4
2.1.4	Events	4
2.2	Compared Parameters	5
2.3	Star Slots	6
2.4	FID Slots	6
A	Summary	7
A.1	Status	7
A.2	Comments	7

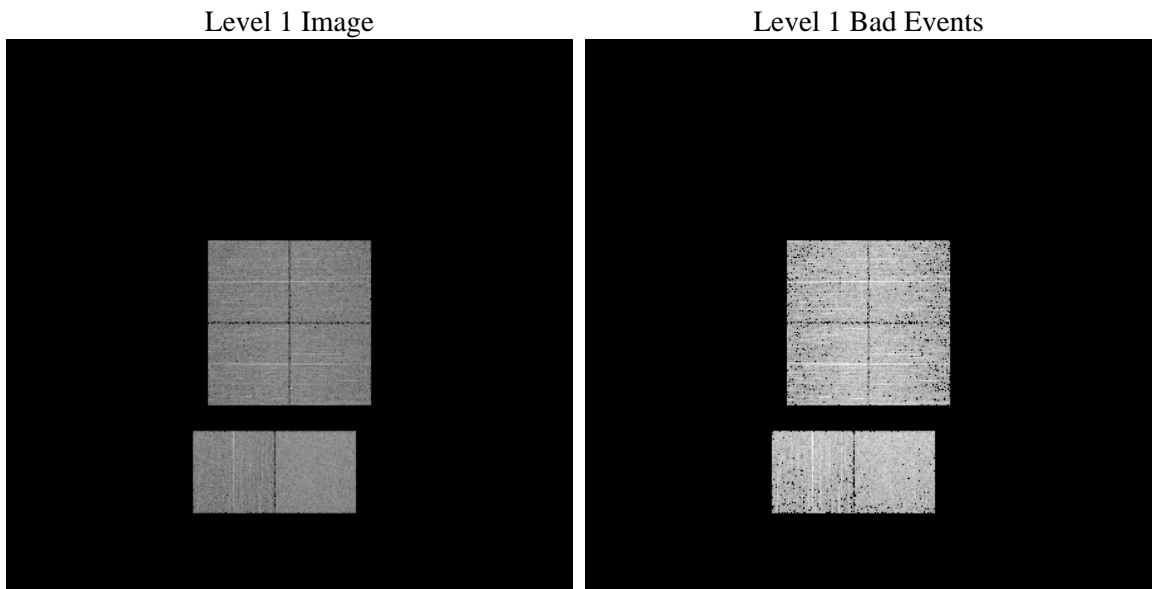
1 Front

seq_num	 	Sequence number
obs_id	55881	Observation id
title	ACIS-012367 diagnostics	Proposal title
observer	CHANDRA engineering request/realtime commanding	Principal investig
object	 	Source name
dtcycle	0	
cycle	P	events from which exps? Prim/Second/Both
ra_targ	0.0	Observer's specified target RA [deg]
dec_targ	0.0	Observer's specified target Dec [deg]
ra_nom	40.679066696382	Nominal RA [deg]
dec_nom	40.976102888435	Nominal Dec [deg]
roll_nom	203.64197273838	Nominal Roll [deg]
revision	2	Processing version of data
ontime	3190.3999881744	Sum of GTIs [s]
livetime	3150.0012224959	Livetime [s]
ontime0	3190.3999881744	Sum of GTIs [s]
ontime1	3190.3999881744	Sum of GTIs [s]
ontime2	3190.3999881744	Sum of GTIs [s]
ontime3	3190.3999881744	Sum of GTIs [s]
ontime6	3190.3999881744	Sum of GTIs [s]
ontime7	3190.3999881744	Sum of GTIs [s]
l2events	139159	Number of level 2 events

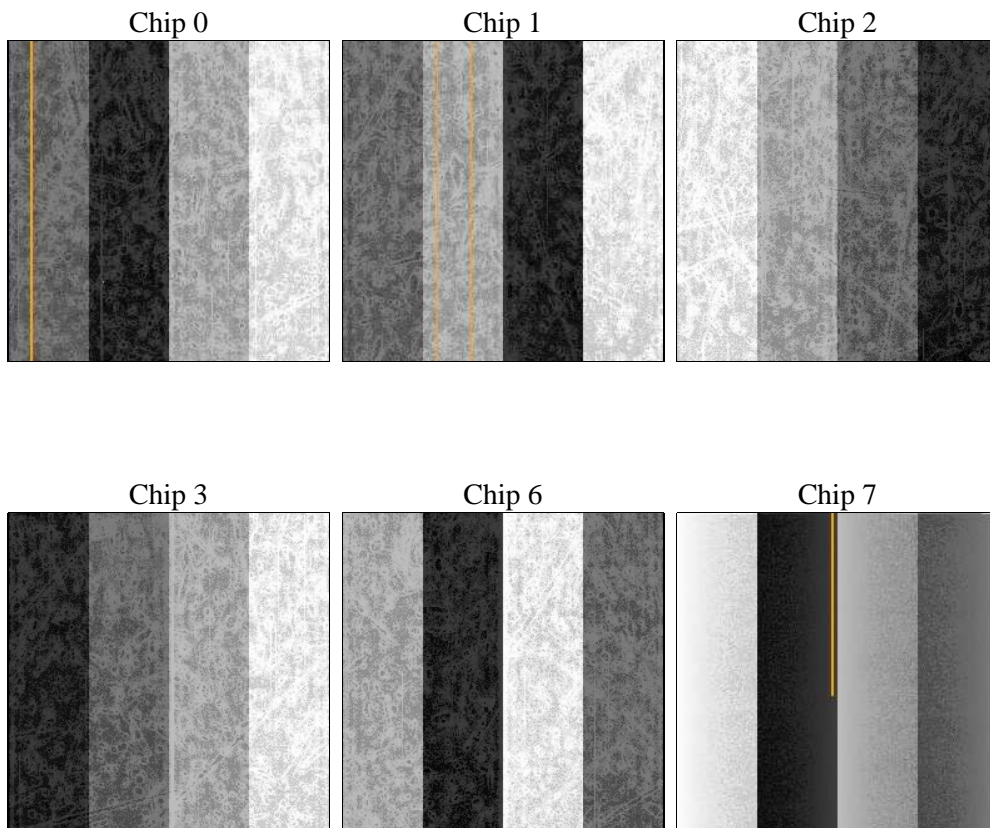
2 OBI

2.1 OBI

2.1.1 Images



2.1.2 Bias



2.1.3 Parameters

obi_num	0	Obi number	sched_exp_time	0.0	[s] Scheduled observation exposure time
ascdsver	8.4.5	Processing system revision	ontime	3190.3999881744	Sum of GTIs [s]
caldsver	4.5.0	 	ontime0	3190.3999881744	Sum of GTIs [s]
date	2012-07-06T16:46:03	Date and time of file creation	ontime1	3190.3999881744	Sum of GTIs [s]
revision	2	Processing version of data	ontime2	3190.3999881744	Sum of GTIs [s]
			ontime3	3190.3999881744	Sum of GTIs [s]
			ontime6	3190.3999881744	Sum of GTIs [s]
			ontime7	3190.3999881744	Sum of GTIs [s]
			l1events	297373	Number of level 1 events

2.1.4 Events

	ccd 0	ccd 1	ccd 2	ccd 3	ccd 6	ccd 7		ccd 0	ccd 1	ccd 2	ccd 3	ccd 6	ccd 7
level 1 events	46317	45242	47903	48390	48039	61482	grade 0 events	12127	11742	12072	13741	11984	6365
rejected events	23902	22867	25971	24766	25316	26400		26%	25%	25%	28%	24%	10%
rejected %	51%	50%	54%	51%	52%	42%	grade 1 events	78	55	87	82	75	47
								0%	0%	0%	0%	0%	0%
							grade 2 events	4203	4538	3963	4010	4381	7883
								9%	10%	8%	8%	9%	12%
							grade 3 events	1605	1545	1557	1579	1473	3214
								3%	3%	3%	3%	3%	5%
							grade 4 events	1586	1512	1543	1566	1561	3142
								3%	3%	3%	3%	3%	5%
							grade 5 events	1534	1459	1377	1568	1515	4020
								3%	3%	2%	3%	3%	6%
							grade 6 events	3552	3732	3418	3462	3995	15504
								7%	8%	7%	7%	8%	25%
							grade 7 events	21632	20659	23886	22382	23055	21307
								46%	45%	49%	46%	47%	34%

2.2 Compared Parameters

Parameter	Planned	Actual	Parameter	Planned	Actual
Instrument	ACIS	ACIS	Obspar format version number	7	7
Detector	ACIS-012367	ACIS-012367	Obspar file type	PREDICTED	ACTUAL
Grating	NONE	NONE	Obspar update status	NONE	UPDATED
Data mode	FAINT	FAINT	Number of optional ACIS chips dropped	0	0
Observation mode	SECONDARY	SECONDARY	On-chip summing requested	N	N
[deg] Pointing RA	0	40.67906669638239	Subarray requested	NONE	NONE
[deg] Pointing Dec	0	40.97610288843534	Alternating exposures requested	N	N
[deg] Pointing Roll	0.0	203.6419727383804	[s] Primary exposure time	3.2	3.2
[mm] SIM focus pos	-1.429586	-1.428180813131781			
[mm] SIM defocus	0.1037507710433287	0.1051558262725154			
[mm] SIM translation stage pos	250.455976	250.466033080201			
[mm] SIM translation stage offset	0	-0.01005468664627074			
[s] Observation start time (MET)	406217440.303269	406217439.27827			
Observation start date	2010-11-15T14:10:40	2010-11-15T14:10:39			
[s] Observation end time (MET)	406223770.703595	406223769.6786			
Observation end date	2010-11-15T15:56:11	2010-11-15T15:56:09			
Read mode	TIMED	TIMED			

2.3 Star Slots

2.4 FID Slots

A Summary

A.1 Status

V&V Scientist	Beth Sundheim
V&V Date (YYYY-MM-DD)	2012.07.16
V&V Edition	1
V&V Disposition and Status	OK
V&V Charge Time	3.1903999881744

A.2 Comments