

# V&V Reference Report

## L2 ASCDS Version : 8.4.5

Observation 55865 - L2 Version 2  
Chandra X-Ray Center

L2 Processing Date : Jul 7 2012

## Contents

<b>1</b>	<b>Front</b>	<b>2</b>
<b>2</b>	<b>OBI</b>	<b>3</b>
2.1	OBI . . . . .	3
2.1.1	Images . . . . .	3
2.1.2	Bias . . . . .	3
2.1.3	Parameters . . . . .	4
2.1.4	Events . . . . .	4
2.2	Compared Parameters . . . . .	5
2.3	Star Slots . . . . .	6
2.4	FID Slots . . . . .	6
<b>A</b>	<b>Summary</b>	<b>7</b>
A.1	Status . . . . .	7
A.2	Comments . . . . .	7

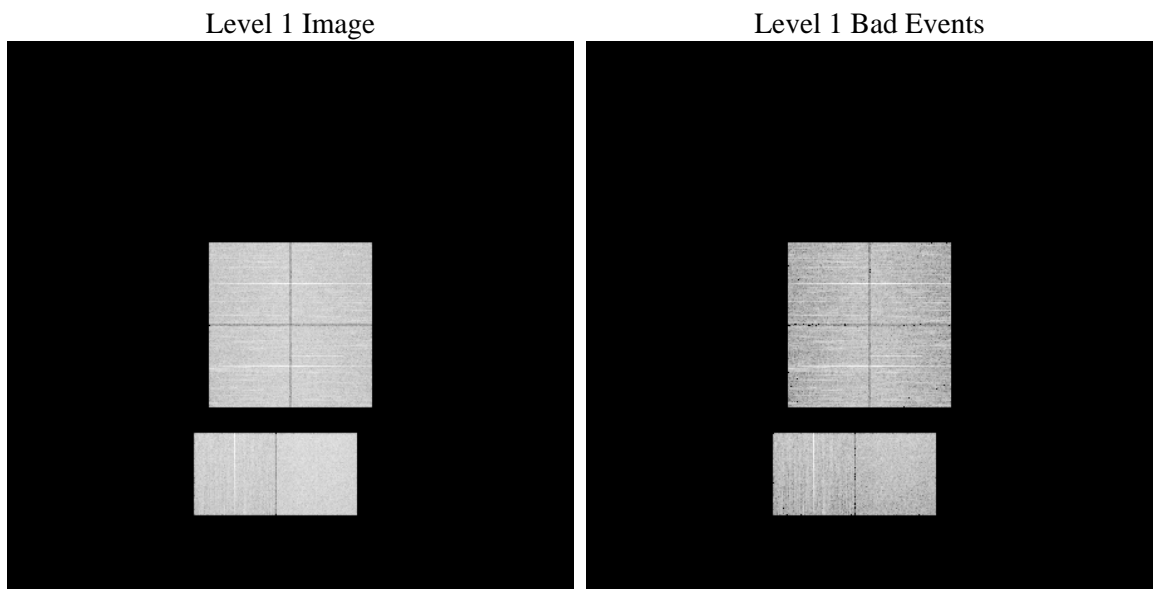
# 1 Front

seq_num	&#160	Sequence number
obs_id	55865	Observation id
title	ACIS-012367 diagnostics	Proposal title
observer	CHANDRA engineering request/realtime commanding	Principal investig
object	&#160	Source name
dtcycle	0	&#160
cycle	P	events from which exps? Prim/Second/Both
ra_targ	0.0	Observer's specified target RA [deg]
dec_targ	0.0	Observer's specified target Dec [deg]
ra_nom	59.020313212287	Nominal RA [deg]
dec_nom	-4.4795522182337	Nominal Dec [deg]
roll_nom	12.293448850656	Nominal Roll [deg]
revision	2	Processing version of data
ontime	7401.5999724865	Sum of GTIs [s]
livetime	7307.8764569264	Livetime [s]
ontime0	7401.5999724865	Sum of GTIs [s]
ontime1	7401.5999724865	Sum of GTIs [s]
ontime2	7401.5999724865	Sum of GTIs [s]
ontime3	7401.5999724865	Sum of GTIs [s]
ontime6	7401.5999724865	Sum of GTIs [s]
ontime7	7401.5999724865	Sum of GTIs [s]
l2events	312219	Number of level 2 events

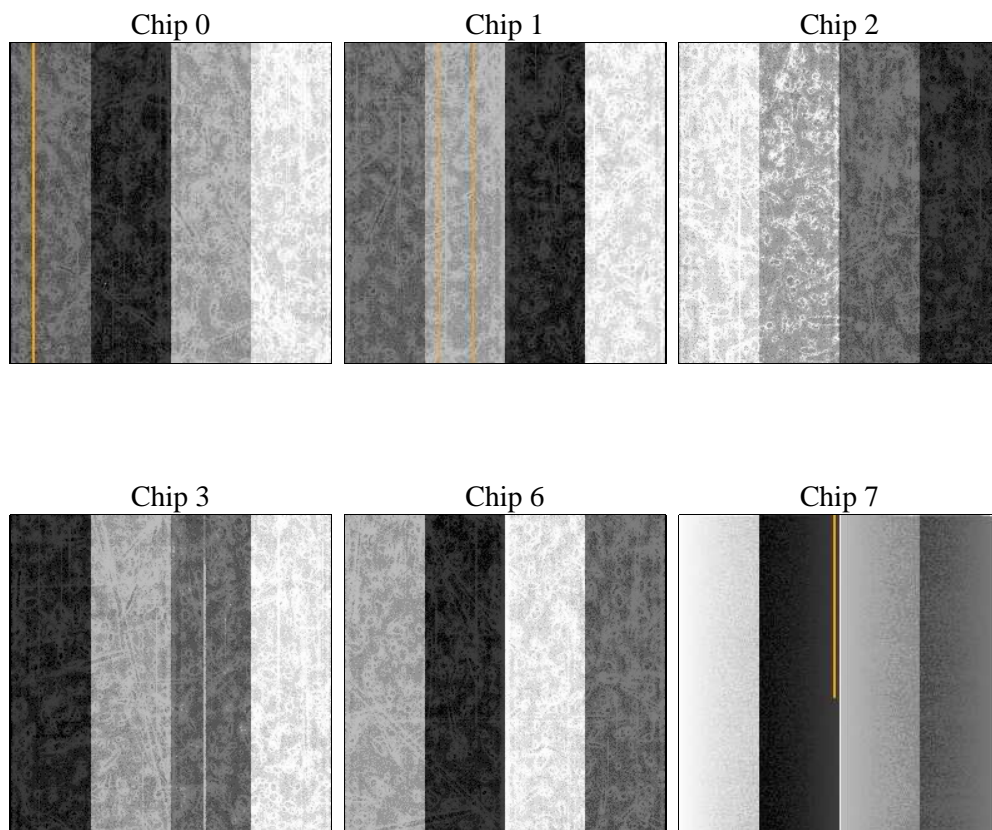
## 2 OBI

### 2.1 OBI

#### 2.1.1 Images



#### 2.1.2 Bias



### 2.1.3 Parameters

obi_num	0	Obi number	sched_exp_time	0.0	[s] Scheduled observation exposure time
ascdsver	8.4.5	Processing system revision	ontime	7401.5999724865	Sum of GTIs [s]
caldsver	4.5.0	&#160	ontime0	7401.5999724865	Sum of GTIs [s]
date	2012-07-07T04:12:10	Date and time of file creation	ontime1	7401.5999724865	Sum of GTIs [s]
revision	2	Processing version of data	ontime2	7401.5999724865	Sum of GTIs [s]
			ontime3	7401.5999724865	Sum of GTIs [s]
			ontime6	7401.5999724865	Sum of GTIs [s]
			ontime7	7401.5999724865	Sum of GTIs [s]
			l1events	659158	Number of level 1 events

### 2.1.4 Events

	ccd 0	ccd 1	ccd 2	ccd 3	ccd 6	ccd 7		ccd 0	ccd 1	ccd 2	ccd 3	ccd 6	ccd 7
level 1 events	103479	102744	105631	104420	108112	134772	grade 0 events	26654	25963	26751	26848	26697	13444
rejected events	52962	52289	56018	54890	56437	56080		25%	25%	25%	25%	24%	9%
rejected %	51%	50%	53%	52%	52%	41%	grade 1 events	170	161	187	171	161	126
								0%	0%	0%	0%	0%	0%
							grade 2 events	9381	9874	8681	8584	9436	16995
								9%	9%	8%	8%	8%	12%
							grade 3 events	3345	3269	3422	3385	3294	6987
								3%	3%	3%	3%	3%	5%
							grade 4 events	3418	3372	3427	3459	3376	6917
								3%	3%	3%	3%	3%	5%
							grade 5 events	3293	3252	3184	3576	3420	8659
								3%	3%	3%	3%	3%	6%
							grade 6 events	7737	8007	7350	7282	8891	34389
								7%	7%	6%	6%	8%	25%
							grade 7 events	49481	48846	52629	51115	52837	47255
								47%	47%	49%	48%	48%	35%

## 2.2 Compared Parameters

Parameter	Planned	Actual	Parameter	Planned	Actual
Instrument	ACIS	ACIS	Obspar format version number	7	7
Detector	ACIS-012367	ACIS-012367	Obspar file type	PREDICTED	ACTUAL
Grating	NONE	NONE	Obspar update status	NONE	UPDATED
Data mode	FAINT	FAINT	Number of optional ACIS chips dropped	0	0
Observation mode	SECONDARY	SECONDARY	On-chip summing requested	N	N
[deg] Pointing RA	0	59.02031321228651	Subarray requested	NONE	NONE
[deg] Pointing Dec	0	-4.479552218233721	Alternating exposures requested	N	N
[deg] Pointing Roll	0.0	12.29344885065636	[s] Primary exposure time	3.2	3.2
[mm] SIM focus pos	-1.429586	-1.428180813131781			
[mm] SIM defocus	0.1037507710433287	0.1051558262725154			
[mm] SIM translation stage pos	250.455976	250.4635187648994			
[mm] SIM translation stage offset	0	-0.007540371344731511			
[s] Observation start time (MET)	406477652.966676	406477651.94168			
Observation start date	2010-11-18T14:27:33	2010-11-18T14:27:31			
[s] Observation end time (MET)	406485670.517089	406485669.49209			
Observation end date	2010-11-18T16:41:11	2010-11-18T16:41:09			
Read mode	TIMED	TIMED			

## **2.3 Star Slots**

## **2.4 FID Slots**

## A Summary

### A.1 Status

V&V Scientist	Beth Sundheim
V&V Date (YYYY-MM-DD)	2012.07.16
V&V Edition	1
V&V Disposition and Status	OK
V&V Charge Time	7.4015999724865

### A.2 Comments