

# V&V Reference Report

## L2 ASCDS Version : 8.4.5

Observation 55821 - L2 Version 2  
Chandra X-Ray Center

L2 Processing Date : Jul 7 2012

## Contents

<b>1</b>	<b>Front</b>	<b>2</b>
<b>2</b>	<b>OBI</b>	<b>3</b>
2.1	OBI . . . . .	3
2.1.1	Images . . . . .	3
2.1.2	Bias . . . . .	3
2.1.3	Parameters . . . . .	4
2.1.4	Events . . . . .	4
2.2	Compared Parameters . . . . .	5
2.3	Star Slots . . . . .	6
2.4	FID Slots . . . . .	6
<b>A</b>	<b>Summary</b>	<b>7</b>
A.1	Status . . . . .	7
A.2	Comments . . . . .	7

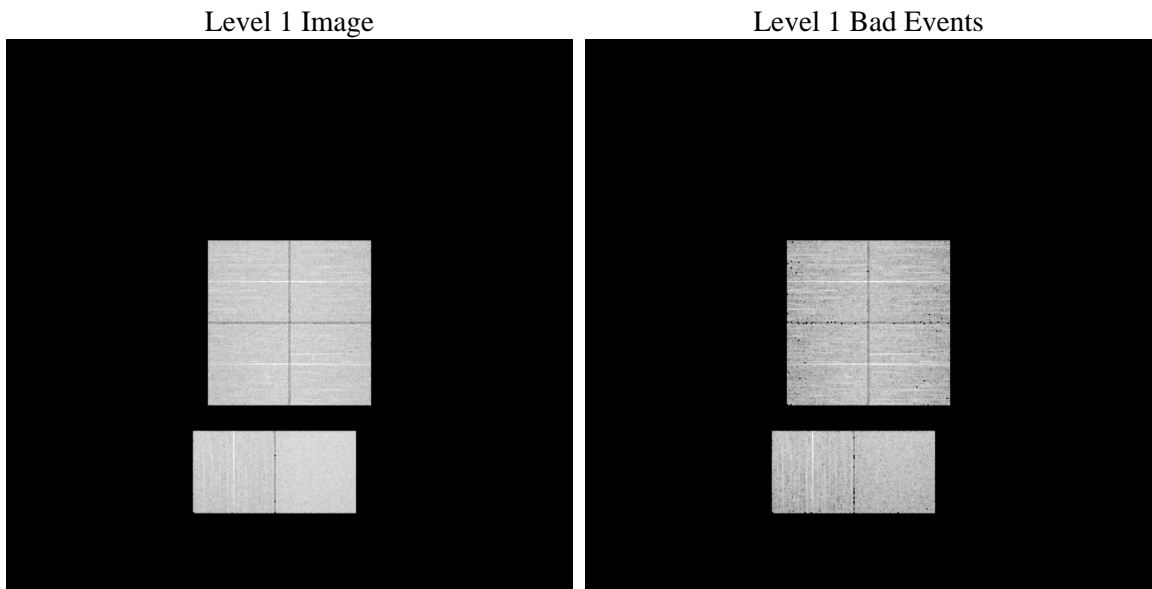
# 1 Front

seq_num	&#160	Sequence number
obs_id	55821	Observation id
title	ACIS-012367 diagnostics	Proposal title
observer	CHANDRA engineering request/realtime commanding	Principal investig
object	&#160	Source name
dtcycle	0	&#160
cycle	P	events from which exps? Prim/Second/Both
ra_targ	0.0	Observer's specified target RA [deg]
dec_targ	0.0	Observer's specified target Dec [deg]
ra_nom	78.959855940193	Nominal RA [deg]
dec_nom	45.993110328441	Nominal Dec [deg]
roll_nom	161.02286920142	Nominal Roll [deg]
revision	2	Processing version of data
ontime	7337.5999727249	Sum of GTIs [s]
livetime	7244.686863698	Livetime [s]
ontime0	7337.5669645071	Sum of GTIs [s]
ontime1	7337.5259245038	Sum of GTIs [s]
ontime2	7337.4848845005	Sum of GTIs [s]
ontime3	7337.5999727249	Sum of GTIs [s]
ontime6	7337.4438444972	Sum of GTIs [s]
ontime7	7337.5999727249	Sum of GTIs [s]
l2events	310332	Number of level 2 events

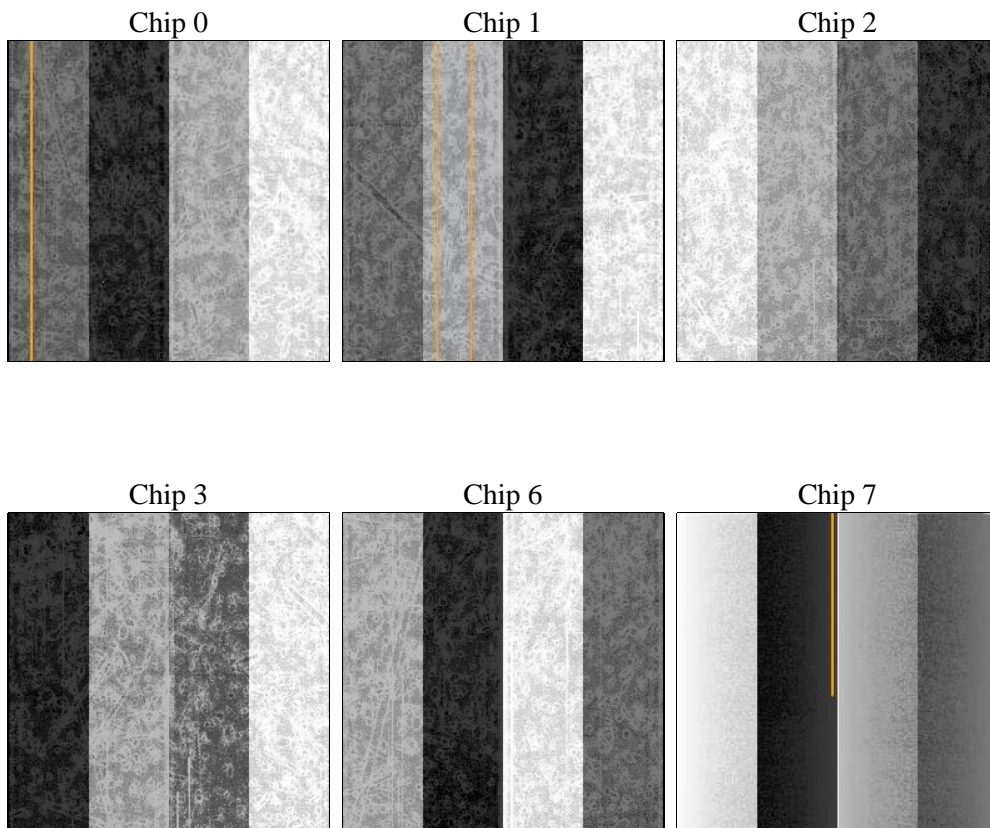
## 2 OBI

### 2.1 OBI

#### 2.1.1 Images



#### 2.1.2 Bias



### 2.1.3 Parameters

obi_num	0	Obi number	sched_exp_time	0.0	[s] Scheduled observation exposure time
ascdsver	8.4.5	Processing system revision	ontime	7337.5999727249	Sum of GTIs [s]
caldsver	4.5.0	&#160	ontime0	7337.5669645071	Sum of GTIs [s]
date	2012-07-07T19:16:09	Date and time of file creation	ontime1	7337.5259245038	Sum of GTIs [s]
revision	2	Processing version of data	ontime2	7337.4848845005	Sum of GTIs [s]
			ontime3	7337.5999727249	Sum of GTIs [s]
			ontime6	7337.4438444972	Sum of GTIs [s]
			ontime7	7337.5999727249	Sum of GTIs [s]
			l1events	664669	Number of level 1 events

### 2.1.4 Events

	ccd 0	ccd 1	ccd 2	ccd 3	ccd 6	ccd 7		ccd 0	ccd 1	ccd 2	ccd 3	ccd 6	ccd 7
level 1 events	104150	103097	103328	109281	108650	136163	grade 0 events	26006	25476	26504	26916	26141	13581
rejected events	54600	53407	54060	59418	57770	57173		24%	24%	25%	24%	24%	9%
rejected %	52%	51%	52%	54%	53%	41%	grade 1 events	170	139	205	169	152	137
								0%	0%	0%	0%	0%	0%
							grade 2 events	9372	9630	8544	8761	9236	17084
								8%	9%	8%	8%	8%	12%
							grade 3 events	3278	3445	3462	3429	3420	7251
								3%	3%	3%	3%	3%	5%
							grade 4 events	3312	3313	3478	3443	3393	7106
								3%	3%	3%	3%	3%	5%
							grade 5 events	3395	3418	3200	3675	3520	8968
								3%	3%	3%	3%	3%	6%
							grade 6 events	7582	7826	7280	7314	8690	33968
								7%	7%	7%	6%	7%	24%
							grade 7 events	51035	49850	50655	55574	54098	48068
								49%	48%	49%	50%	49%	35%

## 2.2 Compared Parameters

Parameter	Planned	Actual	Parameter	Planned	Actual
Instrument	ACIS	ACIS	Obspar format version number	7	7
Detector	ACIS-012367	ACIS-012367	Obspar file type	PREDICTED	ACTUAL
Grating	NONE	NONE	Obspar update status	NONE	UPDATED
Data mode	FAINT	FAINT	Number of optional ACIS chips dropped	0	0
Observation mode	SECONDARY	SECONDARY	On-chip summing requested	N	N
[deg] Pointing RA	0	78.95985594019341	Subarray requested	NONE	NONE
[deg] Pointing Dec	0	45.99311032844068	Alternating exposures requested	N	N
[deg] Pointing Roll	0.0	161.022869201415	[s] Primary exposure time	3.2	3.2
[mm] SIM focus pos	-1.429586	-1.428180813131781			
[mm] SIM defocus	0.1037507710433287	0.1051558262725154			
[mm] SIM translation stage pos	250.455976	250.466033080201			
[mm] SIM translation stage offset	0	-0.01005468664627074			
[s] Observation start time (MET)	407845810.737192	407845809.71219			
Observation start date	2010-12-04T10:30:11	2010-12-04T10:30:09			
[s] Observation end time (MET)	407855039.837667	407855038.81267			
Observation end date	2010-12-04T13:04:00	2010-12-04T13:03:58			
Read mode	TIMED	TIMED			

## **2.3 Star Slots**

## **2.4 FID Slots**

## A Summary

### A.1 Status

V&V Scientist	Jen Lauer
V&V Date (YYYY-MM-DD)	2012.07.17
V&V Edition	1
V&V Disposition and Status	OK
V&V Charge Time	7.3375999727249

### A.2 Comments