

V&V Reference Report

L2 ASCDS Version : 8.4.5

Observation 55809 - L2 Version 2
Chandra X-Ray Center

L2 Processing Date : Jul 8 2012

Contents

1	Front	2
2	OBI	3
2.1	OBI	3
2.1.1	Images	3
2.1.2	Bias	3
2.1.3	Parameters	4
2.1.4	Events	4
2.2	Compared Parameters	5
2.3	Star Slots	6
2.4	FID Slots	6
A	Summary	7
A.1	Status	7
A.2	Comments	7

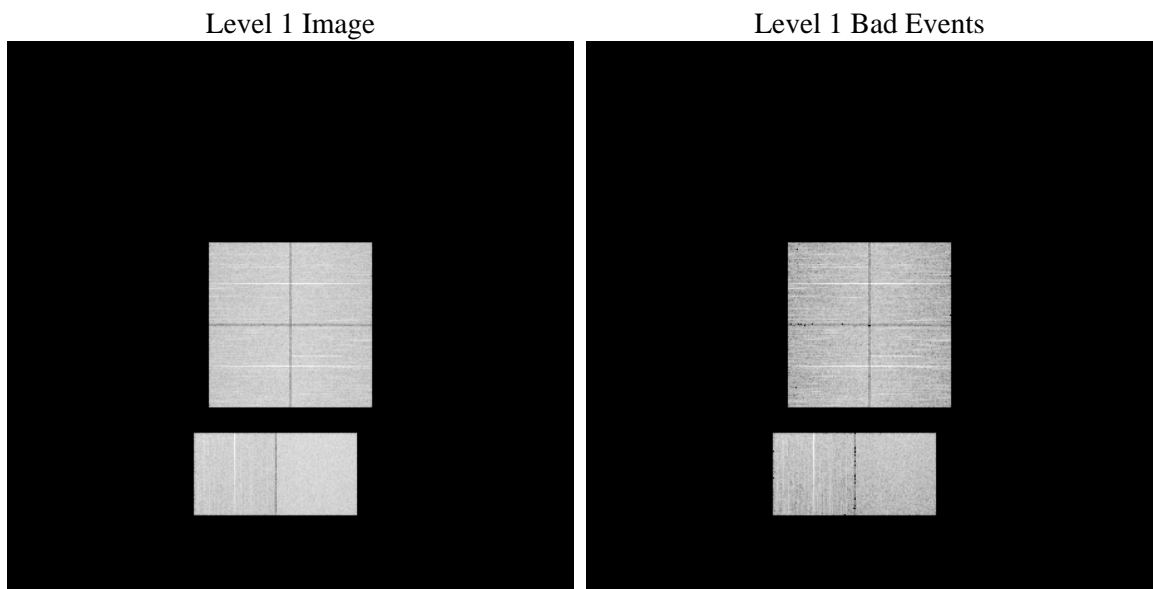
1 Front

seq_num	 	Sequence number
obs_id	55809	Observation id
title	ACIS-012367 diagnostics	Proposal title
observer	CHANDRA engineering request/realtime commanding	Principal investig
object	 	Source name
dtcycle	0	
cycle	P	events from which exps? Prim/Second/Both
ra_targ	0.0	Observer's specified target RA [deg]
dec_targ	0.0	Observer's specified target Dec [deg]
ra_nom	50.508616486338	Nominal RA [deg]
dec_nom	35.472198388672	Nominal Dec [deg]
roll_nom	251.33401710696	Nominal Roll [deg]
revision	2	Processing version of data
ontime	8281.5999692082	Sum of GTIs [s]
livetime	8176.7333638173	Livetime [s]
ontime0	8281.5999692082	Sum of GTIs [s]
ontime1	8278.358948946	Sum of GTIs [s]
ontime2	8281.5999692082	Sum of GTIs [s]
ontime3	8281.5999692082	Sum of GTIs [s]
ontime6	8281.5999692082	Sum of GTIs [s]
ontime7	8281.5999692082	Sum of GTIs [s]
l2events	343328	Number of level 2 events

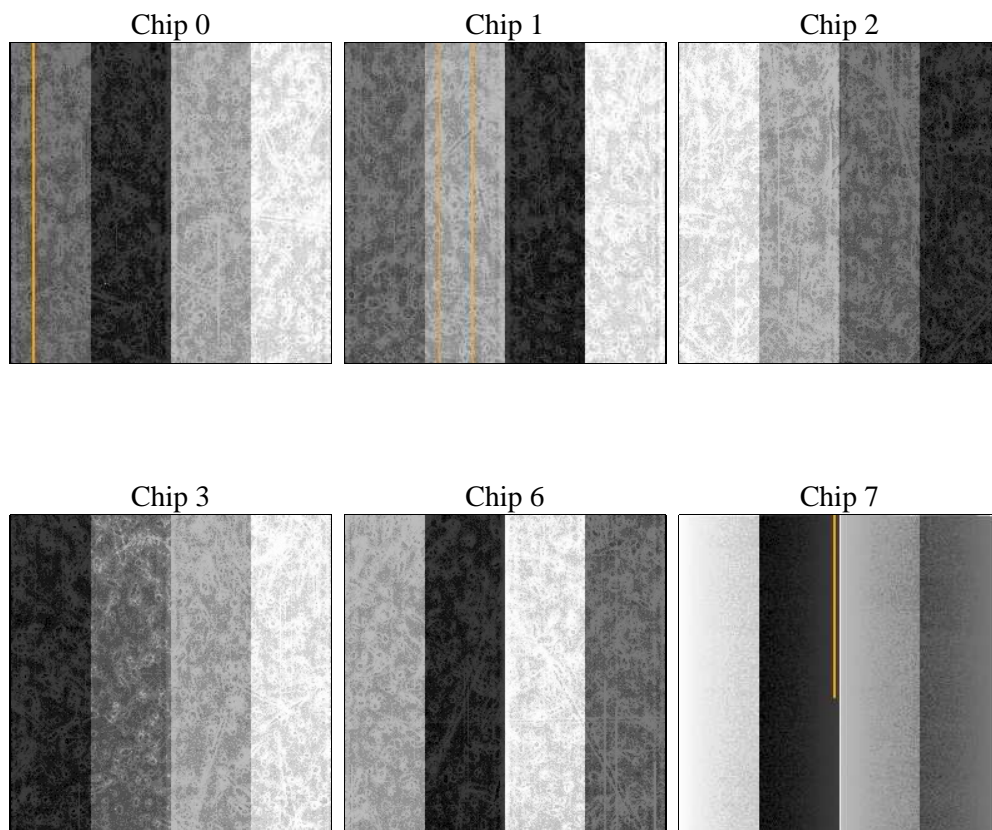
2 OBI

2.1 OBI

2.1.1 Images



2.1.2 Bias



2.1.3 Parameters

obi_num	0	Obi number	sched_exp_time	0.0	[s] Scheduled observation exposure time
ascdsver	8.4.5	Processing system revision	ontime	8281.5999692082	Sum of GTIs [s]
caldsver	4.5.0	 	ontime0	8281.5999692082	Sum of GTIs [s]
date	2012-07-08T05:34:38	Date and time of file creation	ontime1	8278.358948946	Sum of GTIs [s]
revision	2	Processing version of data	ontime2	8281.5999692082	Sum of GTIs [s]
			ontime3	8281.5999692082	Sum of GTIs [s]
			ontime6	8281.5999692082	Sum of GTIs [s]
			ontime7	8281.5999692082	Sum of GTIs [s]
			l1events	745671	Number of level 1 events

2.1.4 Events

	ccd 0	ccd 1	ccd 2	ccd 3	ccd 6	ccd 7		ccd 0	ccd 1	ccd 2	ccd 3	ccd 6	ccd 7
level 1 events	115423	115546	119080	121069	122684	151869	grade 0 events	28887	27376	29546	29853	28266	14400
rejected events	60488	60739	64649	66093	66285	64395		25%	23%	24%	24%	23%	9%
rejected %	52%	52%	54%	54%	54%	42%	grade 1 events	194	161	211	223	161	135
								0%	0%	0%	0%	0%	0%
							grade 2 events	10178	11193	9399	9520	11088	19199
								8%	9%	7%	7%	9%	12%
							grade 3 events	3739	3594	3682	3722	3608	7540
								3%	3%	3%	3%	2%	4%
							grade 4 events	3593	3569	3734	3797	3589	7298
								3%	3%	3%	3%	2%	4%
							grade 5 events	3605	3705	3530	3946	3699	9677
								3%	3%	2%	3%	3%	6%
							grade 6 events	8538	9075	8070	8084	9848	39037
								7%	7%	6%	6%	8%	25%
							grade 7 events	56689	56873	60908	61924	62425	54583
								49%	49%	51%	51%	50%	35%

2.2 Compared Parameters

Parameter	Planned	Actual	Parameter	Planned	Actual
Instrument	ACIS	ACIS	Obspar format version number	7	7
Detector	ACIS-012367	ACIS-012367	Obspar file type	PREDICTED	ACTUAL
Grating	NONE	NONE	Obspar update status	NONE	UPDATED
Data mode	FAINT	FAINT	Number of optional ACIS chips dropped	0	0
Observation mode	SECONDARY	SECONDARY	On-chip summing requested	N	N
[deg] Pointing RA	0	50.50861648633764	Subarray requested	NONE	NONE
[deg] Pointing Dec	0	35.47219838867169	Alternating exposures requested	N	N
[deg] Pointing Roll	0.0	251.3340171069583	[s] Primary exposure time	3.2	3.2
[mm] SIM focus pos	-1.429586	-1.428180813131781			
[mm] SIM defocus	0.1037507710433287	0.1051558262725154			
[mm] SIM translation stage pos	250.455976	250.466033080201			
[mm] SIM translation stage offset	0	-0.01005468664627074			
[s] Observation start time (MET)	408527392.722353	408527391.69735			
Observation start date	2010-12-12T07:49:53	2010-12-12T07:49:51			
[s] Observation end time (MET)	408540879.673049	408540878.64805			
Observation end date	2010-12-12T11:34:40	2010-12-12T11:34:38			
Read mode	TIMED	TIMED			

2.3 Star Slots

2.4 FID Slots

A Summary

A.1 Status

V&V Scientist	Jen Lauer
V&V Date (YYYY-MM-DD)	2012.07.17
V&V Edition	1
V&V Disposition and Status	OK
V&V Charge Time	8.2815999692082

A.2 Comments