

V&V Reference Report

L2 ASCDS Version : 8.4.5

Observation 55785 - L2 Version 2
Chandra X-Ray Center

L2 Processing Date : Jul 8 2012

Contents

1	Front	2
2	OBI	3
2.1	OBI	3
2.1.1	Images	3
2.1.2	Bias	3
2.1.3	Parameters	4
2.1.4	Events	4
2.2	Compared Parameters	5
2.3	Star Slots	6
2.4	FID Slots	6
A	Summary	7
A.1	Status	7
A.2	Comments	7

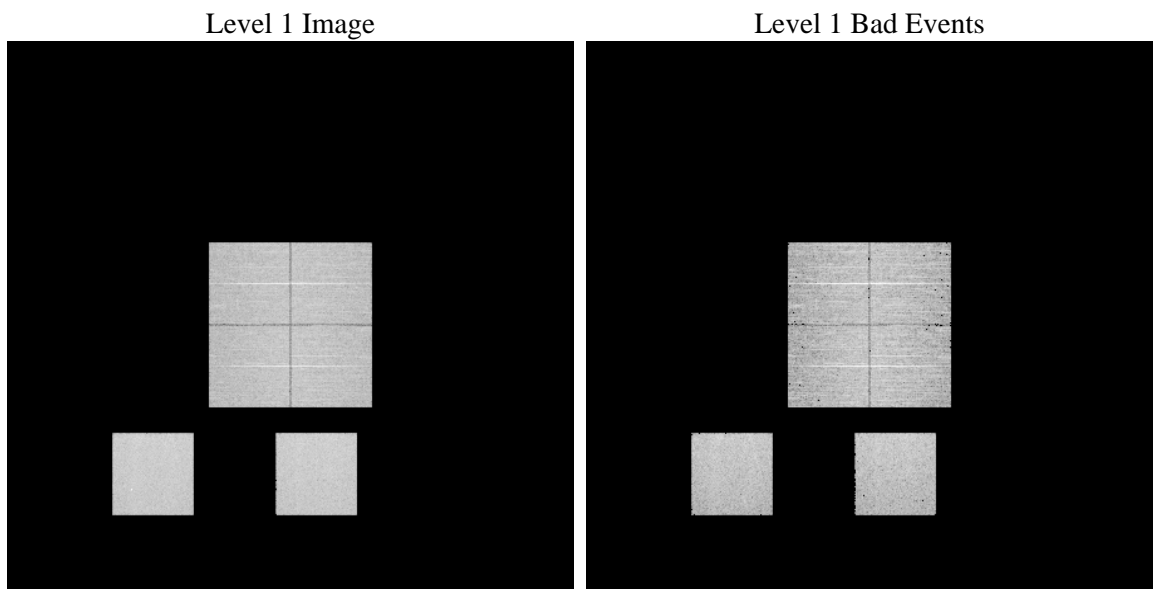
1 Front

seq_num	 	Sequence number
obs_id	55785	Observation id
title	ACIS-012357 diagnostics	Proposal title
observer	CHANDRA engineering request/realtime commanding	Principal investig
object	 	Source name
dtcycle	0	
cycle	P	events from which exps? Prim/Second/Both
ra_targ	0.0	Observer's specified target RA [deg]
dec_targ	0.0	Observer's specified target Dec [deg]
ra_nom	86.529109290673	Nominal RA [deg]
dec_nom	-2.4872369781765	Nominal Dec [deg]
roll_nom	350.91686856071	Nominal Roll [deg]
revision	2	Processing version of data
ontime	7385.5999725461	Sum of GTIs [s]
livetime	7292.0790586193	Livetime [s]
ontime0	7385.5999725461	Sum of GTIs [s]
ontime1	7385.5999725461	Sum of GTIs [s]
ontime2	7385.5999725461	Sum of GTIs [s]
ontime3	7385.5999725461	Sum of GTIs [s]
ontime5	7385.5734506249	Sum of GTIs [s]
ontime7	7385.5999725461	Sum of GTIs [s]
l2events	335971	Number of level 2 events

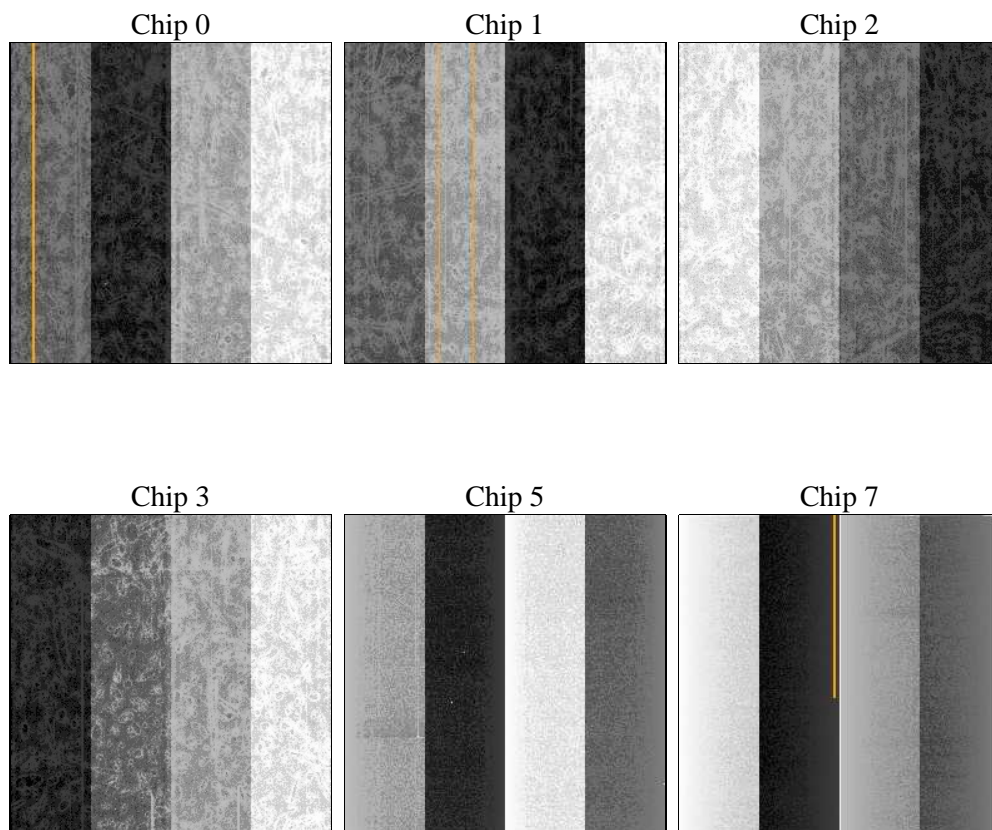
2 OBI

2.1 OBI

2.1.1 Images



2.1.2 Bias



2.1.3 Parameters

obi_num	1	Obi number	sched_exp_time	0.0	[s] Scheduled observation exposure time
ascdsver	8.4.5	Processing system revision	ontime	7385.5999725461	Sum of GTIs [s]
caldsver	4.5.0	 	ontime0	7385.5999725461	Sum of GTIs [s]
date	2012-07-08T20:53:02	Date and time of file creation	ontime1	7385.5999725461	Sum of GTIs [s]
revision	2	Processing version of data	ontime2	7385.5999725461	Sum of GTIs [s]
			ontime3	7385.5999725461	Sum of GTIs [s]
			ontime5	7385.5734506249	Sum of GTIs [s]
			ontime7	7385.5999725461	Sum of GTIs [s]
			l1events	676420	Number of level 1 events

2.1.4 Events

	ccd 0	ccd 1	ccd 2	ccd 3	ccd 5	ccd 7		ccd 0	ccd 1	ccd 2	ccd 3	ccd 5	ccd 7
level 1 events	100102	102515	100051	105001	135668	133083	grade 0 events	25762	24982	26391	26645	8988	13249
rejected events	51184	53429	51194	55680	56999	55546		25%	24%	26%	25%	6%	9%
rejected %	51%	52%	51%	53%	42%	41%	grade 1 events	160	153	180	199	153	91
								0%	0%	0%	0%	0%	0%
							grade 2 events	8904	9774	8460	8625	28732	16866
								8%	9%	8%	8%	21%	12%
							grade 3 events	3366	3255	3474	3453	3222	6852
								3%	3%	3%	3%	2%	5%
							grade 4 events	3291	3300	3309	3355	3021	6750
								3%	3%	3%	3%	2%	5%
							grade 5 events	3253	3256	3143	3388	6980	8483
								3%	3%	3%	3%	5%	6%
							grade 6 events	7595	7775	7223	7243	34706	33820
								7%	7%	7%	6%	25%	25%
							grade 7 events	47771	50020	47871	52093	49866	46972
								47%	48%	47%	49%	36%	35%

2.2 Compared Parameters

Parameter	Planned	Actual	Parameter	Planned	Actual
Instrument	ACIS	ACIS	Obspar format version number	7	7
Detector	ACIS-012357	ACIS-012357	Obspar file type	PREDICTED	ACTUAL
Grating	NONE	NONE	Obspar update status	NONE	UPDATED
Data mode	FAINT	FAINT	Number of optional ACIS chips dropped	0	0
Observation mode	SECONDARY	SECONDARY	On-chip summing requested	N	N
[deg] Pointing RA	0	86.52910929067268	Subarray requested	NONE	NONE
[deg] Pointing Dec	0	-2.487236978176456	Alternating exposures requested	N	N
[deg] Pointing Roll	0.0	350.916868560707	[s] Primary exposure time	3.2	3.2
[mm] SIM focus pos	-1.429586	-1.428180813131781			
[mm] SIM defocus	0.1037507710433287	0.1051558262725154			
[mm] SIM translation stage pos	250.455976	250.466033080201			
[mm] SIM translation stage offset	0	-0.01005468664627074			
[s] Observation start time (MET)	409442775.169584	409442774.14458			
Observation start date	2010-12-22T22:06:15	2010-12-22T22:06:14			
[s] Observation end time (MET)	409453804.170153	409453803.14515			
Observation end date	2010-12-23T01:10:04	2010-12-23T01:10:03			
Read mode	TIMED	TIMED			

2.3 Star Slots

2.4 FID Slots

A Summary

A.1 Status

V&V Scientist	Jen Lauer
V&V Date (YYYY-MM-DD)	2012.07.18
V&V Edition	1
V&V Disposition and Status	OK
V&V Charge Time	7.3855999725461

A.2 Comments