

# V&V Reference Report

## L2 ASCDS Version : 8.4.5

Observation 55766 - L2 Version 2  
Chandra X-Ray Center

L2 Processing Date : Jul 8 2012

## Contents

<b>1</b>	<b>Front</b>	<b>2</b>
<b>2</b>	<b>OBI</b>	<b>3</b>
2.1	OBI . . . . .	3
2.1.1	Images . . . . .	3
2.1.2	Bias . . . . .	3
2.1.3	Parameters . . . . .	4
2.1.4	Events . . . . .	4
2.2	Compared Parameters . . . . .	5
2.3	Star Slots . . . . .	6
2.4	FID Slots . . . . .	6
<b>A</b>	<b>Summary</b>	<b>7</b>
A.1	Status . . . . .	7
A.2	Comments . . . . .	7

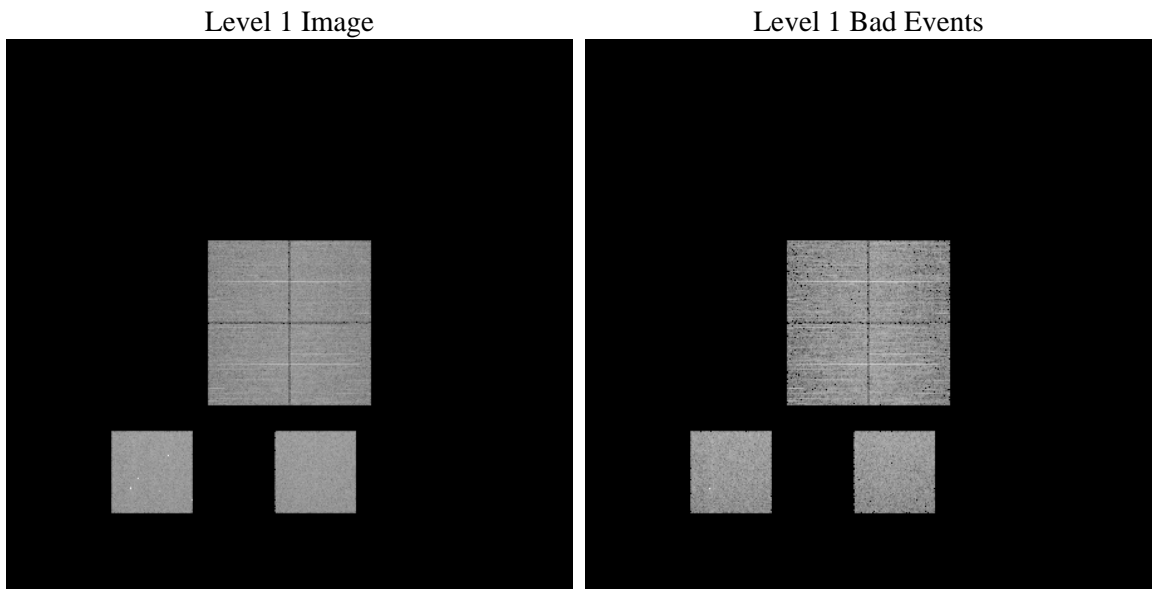
# 1 Front

seq_num	&#160	Sequence number
obs_id	55766	Observation id
title	ACIS-012357 diagnostics	Proposal title
observer	CHANDRA engineering request/realtime commanding	Principal investig
object	&#160	Source name
dtcycle	0	&#160
cycle	P	events from which exps? Prim/Second/Both
ra_targ	0.0	Observer's specified target RA [deg]
dec_targ	0.0	Observer's specified target Dec [deg]
ra_nom	214.9778809465	Nominal RA [deg]
dec_nom	-44.975915489976	Nominal Dec [deg]
roll_nom	90.119720827481	Nominal Roll [deg]
revision	2	Processing version of data
ontime	4747.831532836	Sum of GTIs [s]
livetime	4687.7116311663	Livetime [s]
ontime0	4747.7904928327	Sum of GTIs [s]
ontime1	4747.7494528294	Sum of GTIs [s]
ontime2	4747.7084128261	Sum of GTIs [s]
ontime3	4747.8725728393	Sum of GTIs [s]
ontime5	4747.6673728228	Sum of GTIs [s]
ontime7	4747.831532836	Sum of GTIs [s]
l2events	216464	Number of level 2 events

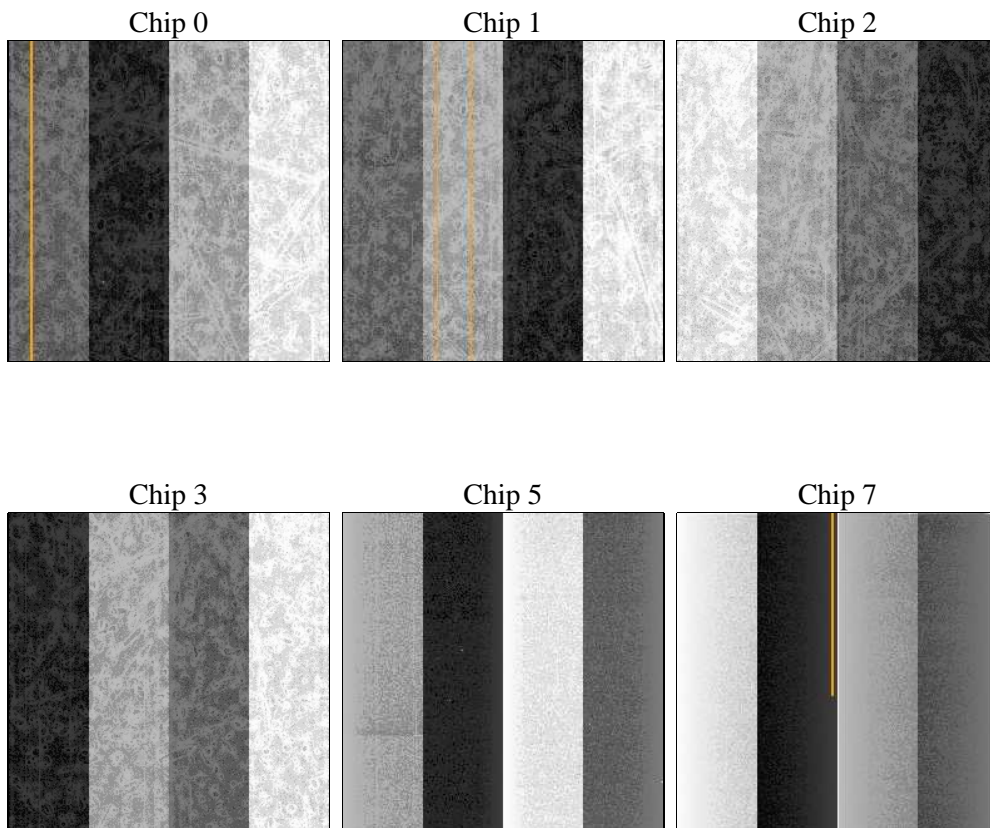
## 2 OBI

### 2.1 OBI

#### 2.1.1 Images



#### 2.1.2 Bias



### 2.1.3 Parameters

obi_num	0	Obi number	sched_exp_time	0.0	[s] Scheduled observation exposure time
ascdsver	8.4.5	Processing system revision	ontime	4747.831532836	Sum of GTIs [s]
caldsver	4.5.0	&#160	ontime0	4747.7904928327	Sum of GTIs [s]
date	2012-07-09T00:03:25	Date and time of file creation	ontime1	4747.7494528294	Sum of GTIs [s]
revision	2	Processing version of data	ontime2	4747.7084128261	Sum of GTIs [s]
			ontime3	4747.8725728393	Sum of GTIs [s]
			ontime5	4747.6673728228	Sum of GTIs [s]
			ontime7	4747.831532836	Sum of GTIs [s]
			l1events	438488	Number of level 1 events

### 2.1.4 Events

	ccd 0	ccd 1	ccd 2	ccd 3	ccd 5	ccd 7		ccd 0	ccd 1	ccd 2	ccd 3	ccd 5	ccd 7
level 1 events	63516	65215	65394	68009	90567	85787	grade 0 events	16435	16271	17068	16928	7629	8509
rejected events	32064	33325	33878	36644	37591	35858		25%	24%	26%	24%	8%	9%
rejected %	50%	51%	51%	53%	41%	41%	grade 1 events	112	100	128	143	97	72
								0%	0%	0%	0%	0%	0%
							grade 2 events	5899	6109	5523	5499	18530	10732
								9%	9%	8%	8%	20%	12%
							grade 3 events	2212	2198	2147	2193	2298	4521
								3%	3%	3%	3%	2%	5%
							grade 4 events	2126	2150	2127	2169	2182	4455
								3%	3%	3%	3%	2%	5%
							grade 5 events	2080	2208	2070	2408	5095	5759
								3%	3%	3%	3%	5%	6%
							grade 6 events	4780	5162	4651	4576	22337	21712
								7%	7%	7%	6%	24%	25%
							grade 7 events	29872	31017	31680	34093	32399	30027
								47%	47%	48%	50%	35%	35%

## 2.2 Compared Parameters

Parameter	Planned	Actual	Parameter	Planned	Actual
Instrument	ACIS	ACIS	Obspar format version number	7	7
Detector	ACIS-012357	ACIS-012357	Obspar file type	PREDICTED	ACTUAL
Grating	NONE	NONE	Obspar update status	NONE	UPDATED
Data mode	FAINT	FAINT	Number of optional ACIS chips dropped	0	0
Observation mode	SECONDARY	SECONDARY	On-chip summing requested	N	N
[deg] Pointing RA	0	214.977880946496	Subarray requested	NONE	NONE
[deg] Pointing Dec	0	-44.97591548997588	Alternating exposures requested	N	N
[deg] Pointing Roll	0.0	90.11972082748116	[s] Primary exposure time	3.2	3.2
[mm] SIM focus pos	-1.429586	-1.428180813131781			
[mm] SIM defocus	0.1037507710433287	0.1051558262725154			
[mm] SIM translation stage pos	250.455976	250.466033080201			
[mm] SIM translation stage offset	0	-0.01005468664627074			
[s] Observation start time (MET)	410130238.605063	410130237.58007			
Observation start date	2010-12-30T21:03:59	2010-12-30T21:03:57			
[s] Observation end time (MET)	410136880.605406	410136879.58042			
Observation end date	2010-12-30T22:54:41	2010-12-30T22:54:39			
Read mode	TIMED	TIMED			

## 2.3 Star Slots

## 2.4 FID Slots

## A Summary

### A.1 Status

V&V Scientist	Beth Sundheim
V&V Date (YYYY-MM-DD)	2012.07.18
V&V Edition	1
V&V Disposition and Status	OK
V&V Charge Time	4.747831532836

### A.2 Comments