

# V&V Reference Report

## L2 ASCDS Version : 8.4.4

Observation 57405 - L2 Version 2  
Chandra X-Ray Center

L2 Processing Date : May 28 2012

## Contents

<b>1</b>	<b>Front</b>	<b>2</b>
<b>2</b>	<b>OBI</b>	<b>3</b>
2.1	OBI . . . . .	3
2.1.1	Images . . . . .	3
2.1.2	Bias . . . . .	3
2.1.3	Parameters . . . . .	4
2.1.4	Events . . . . .	4
2.2	Compared Parameters . . . . .	5
2.3	Star Slots . . . . .	6
2.4	FID Slots . . . . .	6
<b>A</b>	<b>Summary</b>	<b>7</b>
A.1	Status . . . . .	7
A.2	Comments . . . . .	7

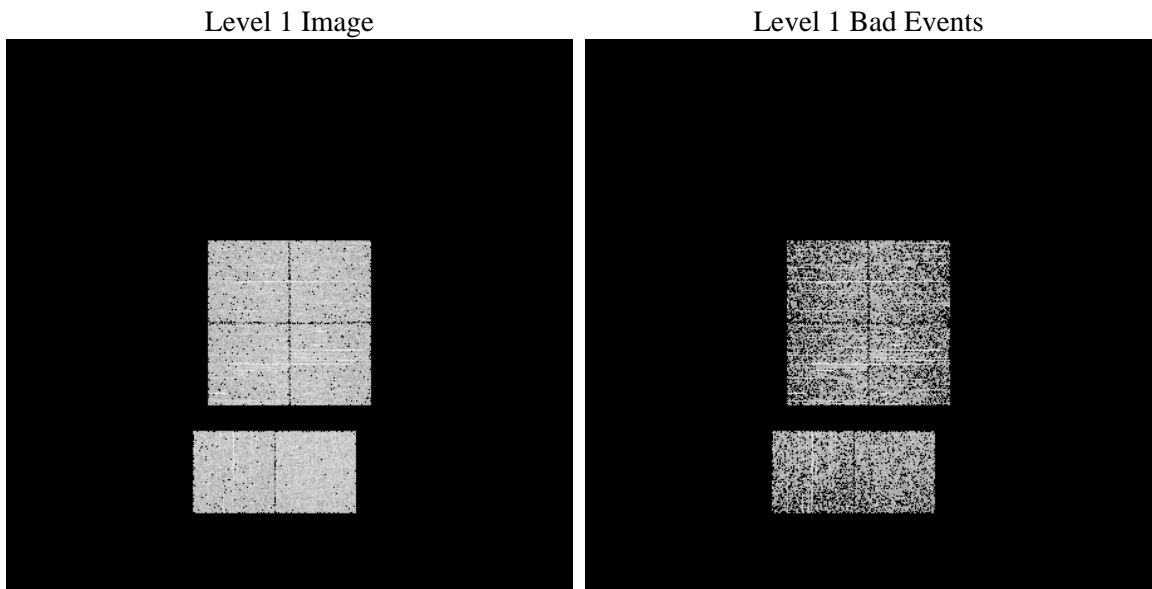
# 1 Front

seq_num	&#160	Sequence number
obs_id	57405	Observation id
title	ACIS-012367 diagnostics	Proposal title
observer	CHANDRA engineering request/realtime commanding	Principal investig
object	&#160	Source name
dtcycle	0	&#160
cycle	P	events from which exps? Prim/Second/Both
ra_targ	0.0	Observer's specified target RA [deg]
dec_targ	0.0	Observer's specified target Dec [deg]
ra_nom	94.02863592116	Nominal RA [deg]
dec_nom	1.5026059581463	Nominal Dec [deg]
roll_nom	332.4344703556	Nominal Roll [deg]
revision	2	Processing version of data
ontime	943.99999654293	Sum of GTIs [s]
livetime	932.04650017815	Livetime [s]
ontime0	943.99999654293	Sum of GTIs [s]
ontime1	943.99999654293	Sum of GTIs [s]
ontime2	943.99999654293	Sum of GTIs [s]
ontime3	943.99999654293	Sum of GTIs [s]
ontime6	943.99999654293	Sum of GTIs [s]
ontime7	943.99999654293	Sum of GTIs [s]
l2events	67045	Number of level 2 events

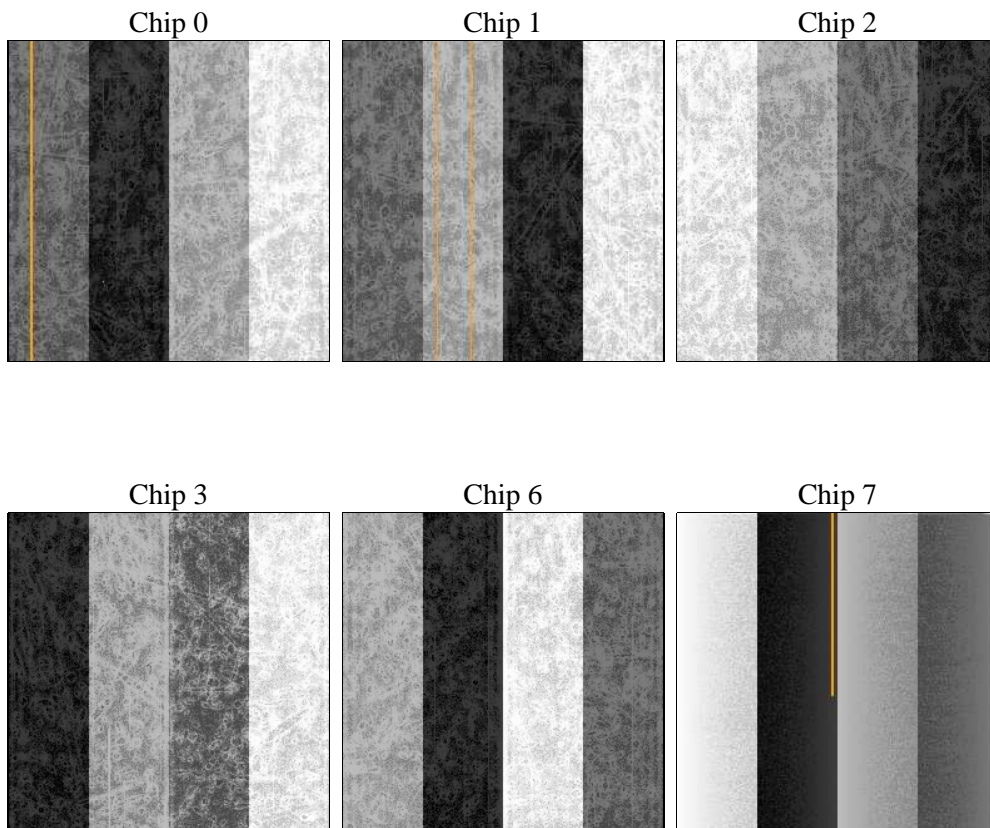
## 2 OBI

### 2.1 OBI

#### 2.1.1 Images



#### 2.1.2 Bias



### 2.1.3 Parameters

obi_num	0	Obi number	sched_exp_time	0.0	[s] Scheduled observation exposure time
ascdsver	8.4.4	Processing system revision	ontime	943.99999654293	Sum of GTIs [s]
caldsver	4.4.9	&#160	ontime0	943.99999654293	Sum of GTIs [s]
date	2012-05-28T13:28:57	Date and time of file creation	ontime1	943.99999654293	Sum of GTIs [s]
revision	2	Processing version of data	ontime2	943.99999654293	Sum of GTIs [s]
			ontime3	943.99999654293	Sum of GTIs [s]
			ontime6	943.99999654293	Sum of GTIs [s]
			ontime7	943.99999654293	Sum of GTIs [s]
			l1events	121746	Number of level 1 events

### 2.1.4 Events

	ccd 0	ccd 1	ccd 2	ccd 3	ccd 6	ccd 7
level 1 events	18869	19103	20242	20752	19807	22973
rejected events	7794	7866	9468	9667	8277	7906
rejected %	41%	41%	46%	46%	41%	34%

	ccd 0	ccd 1	ccd 2	ccd 3	ccd 6	ccd 7
grade 0 events	6046	5776	5935	6015	5926	2905
	32%	30%	29%	28%	29%	12%
grade 1 events	42	38	50	34	29	19
	0%	0%	0%	0%	0%	0%
grade 2 events	1961	2104	1796	1907	2100	3341
	10%	11%	8%	9%	10%	14%
grade 3 events	705	778	716	791	760	1381
	3%	4%	3%	3%	3%	6%
grade 4 events	711	730	717	729	760	1391
	3%	3%	3%	3%	3%	6%
grade 5 events	508	468	481	501	513	1321
	2%	2%	2%	2%	2%	5%
grade 6 events	1689	1887	1654	1685	2020	6098
	8%	9%	8%	8%	10%	26%
grade 7 events	7207	7322	8893	9090	7699	6517
	38%	38%	43%	43%	38%	28%

## 2.2 Compared Parameters

Parameter	Planned	Actual	Parameter	Planned	Actual
Instrument	ACIS	ACIS	Obspar format version number	7	7
Detector	ACIS-012367	ACIS-012367	Obspar file type	PREDICTED	ACTUAL
Grating	NONE	NONE	Obspar update status	NONE	UPDATED
Data mode	FAINT	FAINT	Number of optional ACIS chips dropped	0	0
Observation mode	SECONDARY	SECONDARY	On-chip summing requested	N	N
[deg] Pointing RA	0	94.02863592116037	Subarray requested	NONE	NONE
[deg] Pointing Dec	0	1.50260595814627	Alternating exposures requested	N	N
[deg] Pointing Roll	0.0	332.4344703556004	[s] Primary exposure time	3.2	3.2
[mm] SIM focus pos	-1.429586	-0.6828225247311905			
[mm] SIM defocus	0.1037507710433287	0.8505141146731063			
[mm] SIM translation stage pos	250.455976	250.466033080201			
[mm] SIM translation stage offset	0	-0.01005468664627074			
[s] Observation start time (MET)	347493598.589422	347493597.56441			
Observation start date	2009-01-04T21:59:59	2009-01-04T21:59:57			
[s] Observation end time (MET)	347506294.24005	347506293.21504			
Observation end date	2009-01-05T01:31:34	2009-01-05T01:31:33			
Read mode	TIMED	TIMED			

## 2.3 Star Slots

## 2.4 FID Slots

## A Summary

### A.1 Status

V&V Scientist	Jen Lauer
V&V Date (YYYY-MM-DD)	2012.06.01
V&V Edition	1
V&V Disposition and Status	OK
V&V Charge Time	0.94399999654293

### A.2 Comments