

V&V Reference Report

L2 ASCDS Version : 8.4.4

Observation 57343 - L2 Version 2
Chandra X-Ray Center

L2 Processing Date : May 30 2012

Contents

1	Front	2
2	OBI	3
2.1	OBI	3
2.1.1	Images	3
2.1.2	Bias	3
2.1.3	Parameters	4
2.1.4	Events	4
2.2	Compared Parameters	5
2.3	Star Slots	6
2.4	FID Slots	6
A	Summary	7
A.1	Status	7
A.2	Comments	7

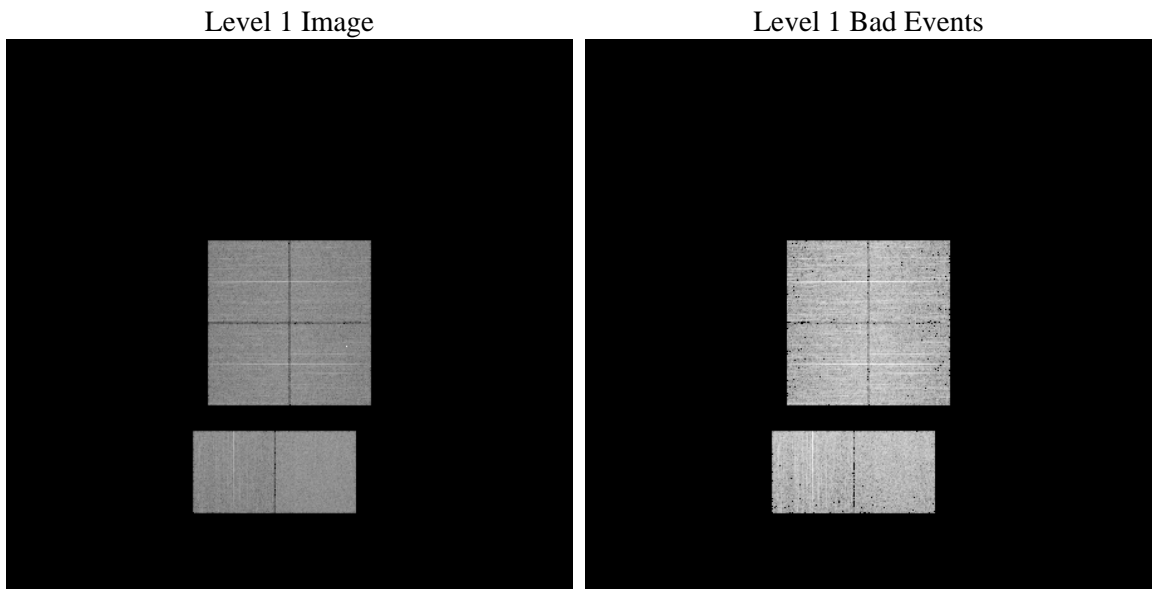
1 Front

seq_num	 	Sequence number
obs_id	57343	Observation id
title	ACIS-012367 diagnostics	Proposal title
observer	CHANDRA engineering request/realtime commanding	Principal investig
object	 	Source name
dtcycle	0	
cycle	P	events from which exps? Prim/Second/Both
ra_targ	0.0	Observer's specified target RA [deg]
dec_targ	0.0	Observer's specified target Dec [deg]
ra_nom	162.32413736614	Nominal RA [deg]
dec_nom	51.053594497789	Nominal Dec [deg]
roll_nom	129.91058236743	Nominal Roll [deg]
revision	2	Processing version of data
ontime	4239.9999842644	Sum of GTIs [s]
livetime	4186.3105514421	Livetime [s]
ontime0	4239.9999842644	Sum of GTIs [s]
ontime1	4239.9999842644	Sum of GTIs [s]
ontime2	4239.9999842644	Sum of GTIs [s]
ontime3	4239.9999842644	Sum of GTIs [s]
ontime6	4239.9999842644	Sum of GTIs [s]
ontime7	4239.9999842644	Sum of GTIs [s]
l2events	263752	Number of level 2 events

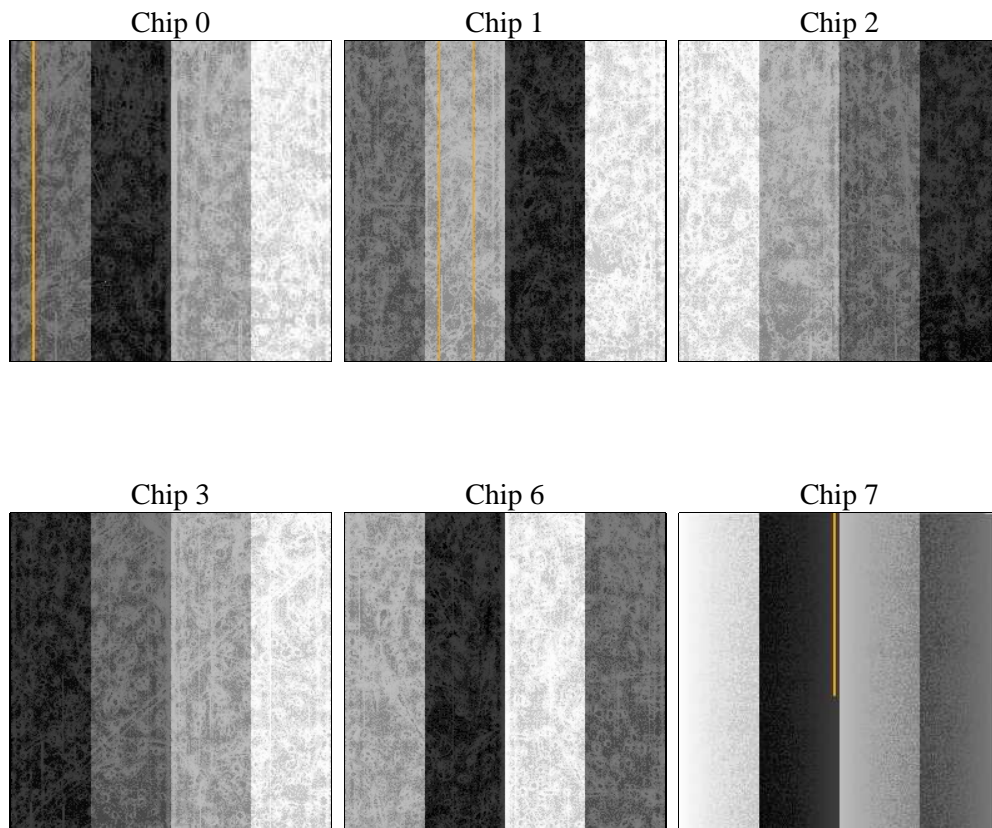
2 OBI

2.1 OBI

2.1.1 Images



2.1.2 Bias



2.1.3 Parameters

obi_num	0	Obi number	sched_exp_time	0.0	[s] Scheduled observation exposure time
ascdsver	8.4.4	Processing system revision	ontime	4239.9999842644	Sum of GTIs [s]
caldsver	4.4.9	 	ontime0	4239.9999842644	Sum of GTIs [s]
date	2012-05-30T09:28:49	Date and time of file creation	ontime1	4239.9999842644	Sum of GTIs [s]
revision	2	Processing version of data	ontime2	4239.9999842644	Sum of GTIs [s]
			ontime3	4239.9999842644	Sum of GTIs [s]
			ontime6	4239.9999842644	Sum of GTIs [s]
			ontime7	4239.9999842644	Sum of GTIs [s]
			l1events	510485	Number of level 1 events

2.1.4 Events

	ccd 0	ccd 1	ccd 2	ccd 3	ccd 6	ccd 7		ccd 0	ccd 1	ccd 2	ccd 3	ccd 6	ccd 7
level 1 events	80557	80098	82079	84748	84170	98833	grade 0 events	22827	22686	23536	25190	23306	11712
rejected events	38296	36813	39285	40130	39875	36383		28%	28%	28%	29%	27%	11%
rejected %	47%	45%	47%	47%	47%	36%	grade 1 events	163	122	228	186	161	72
								0%	0%	0%	0%	0%	0%
							grade 2 events	7505	8175	7295	7444	8041	13734
								9%	10%	8%	8%	9%	13%
							grade 3 events	2838	2895	2964	2963	2876	5761
								3%	3%	3%	3%	3%	5%
							grade 4 events	2787	2889	2870	2899	2845	5723
								3%	3%	3%	3%	3%	5%
							grade 5 events	2037	2208	2032	2359	2301	5904
								2%	2%	2%	2%	2%	5%
							grade 6 events	6341	6671	6162	6164	7262	25560
								7%	8%	7%	7%	8%	25%
							grade 7 events	36059	34452	36992	37543	37378	30367
								44%	43%	45%	44%	44%	30%

2.2 Compared Parameters

Parameter	Planned	Actual
Instrument	ACIS	ACIS
Detector	ACIS-012367	ACIS-012367
Grating	NONE	NONE
Data mode	FAINT	FAINT
Observation mode	SECONDARY	SECONDARY
[deg] Pointing RA	0	162.3241373661365
[deg] Pointing Dec	0	51.05359449778935
[deg] Pointing Roll	0.0	129.9105823674327
[mm] SIM focus pos	-1.429586	-0.7809083437167272
[mm] SIM defocus	0.1037507710433287	0.7524282956875696
[mm] SIM translation stage pos	250.455976	250.466033080201
[mm] SIM translation stage offset	0	-0.01005468664627074
[s] Observation start time (MET)	349546694.19099	349546693.166
Observation start date	2009-01-28T16:18:14	2009-01-28T16:18:13
[s] Observation end time (MET)	349556802.74149	349556801.7165
Observation end date	2009-01-28T19:06:43	2009-01-28T19:06:41
Read mode	TIMED	TIMED

Parameter	Planned	Actual
Obspar format version number	7	7
Obspar file type	PREDICTED	ACTUAL
Obspar update status	NONE	UPDATED
Number of optional ACIS chips dropped	0	0
On-chip summing requested	N	N
Subarray requested	NONE	NONE
Alternating exposures requested	N	N
[s] Primary exposure time	3.2	3.2

2.3 Star Slots

2.4 FID Slots

A Summary

A.1 Status

V&V Scientist	Jen Lauer
V&V Date (YYYY-MM-DD)	2012.06.04
V&V Edition	1
V&V Disposition and Status	OK
V&V Charge Time	4.2399999842644

A.2 Comments