

V&V Reference Report

L2 ASCDS Version : 8.4.4

Observation 57317 - L2 Version 2
Chandra X-Ray Center

L2 Processing Date : Jun 1 2012

Contents

1	Front	2
2	OBI	3
2.1	OBI	3
2.1.1	Images	3
2.1.2	Bias	3
2.1.3	Parameters	4
2.1.4	Events	4
2.2	Compared Parameters	5
2.3	Star Slots	6
2.4	FID Slots	6
A	Summary	7
A.1	Status	7
A.2	Comments	7

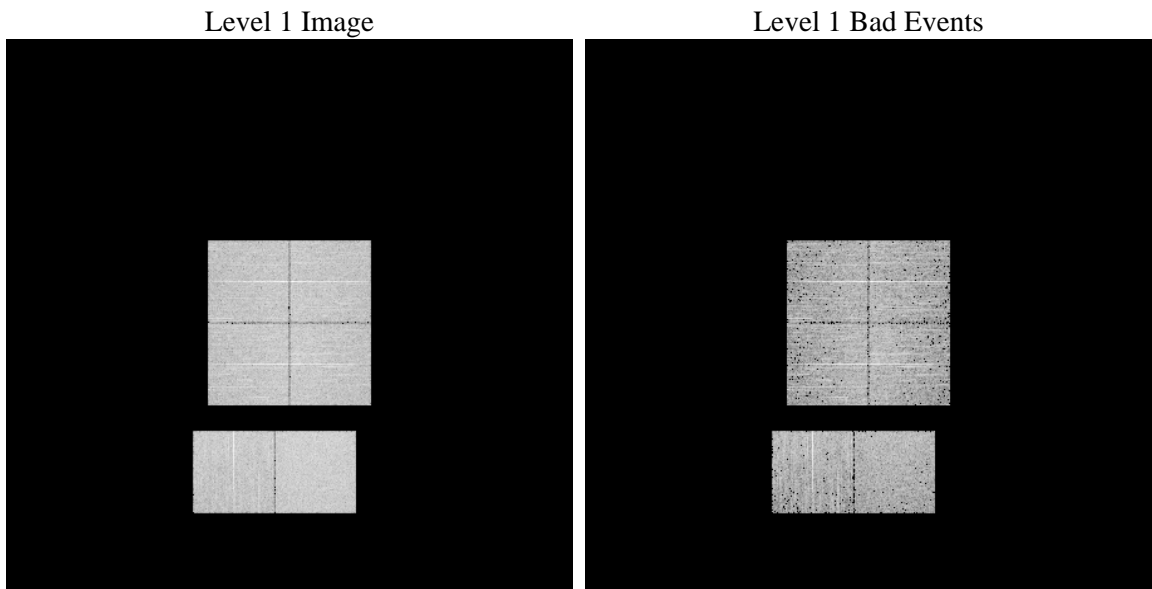
1 Front

seq_num	 	Sequence number
obs_id	57317	Observation id
title	ACIS-012367 diagnostics	Proposal title
observer	CHANDRA engineering request/realtime commanding	Principal investig
object	 	Source name
dtcycle	0	
cycle	P	events from which exps? Prim/Second/Both
ra_targ	0.0	Observer's specified target RA [deg]
dec_targ	0.0	Observer's specified target Dec [deg]
ra_nom	155.99805569225	Nominal RA [deg]
dec_nom	11.025109813063	Nominal Dec [deg]
roll_nom	72.338049324101	Nominal Roll [deg]
revision	2	Processing version of data
ontime	3275.8154458404	Sum of GTIs [s]
livetime	3234.3350982059	Livetime [s]
ontime0	3275.7744058371	Sum of GTIs [s]
ontime1	3275.7333658338	Sum of GTIs [s]
ontime2	3275.6923258305	Sum of GTIs [s]
ontime3	3275.8564858437	Sum of GTIs [s]
ontime6	3275.6512858272	Sum of GTIs [s]
ontime7	3275.8154458404	Sum of GTIs [s]
l2events	203532	Number of level 2 events

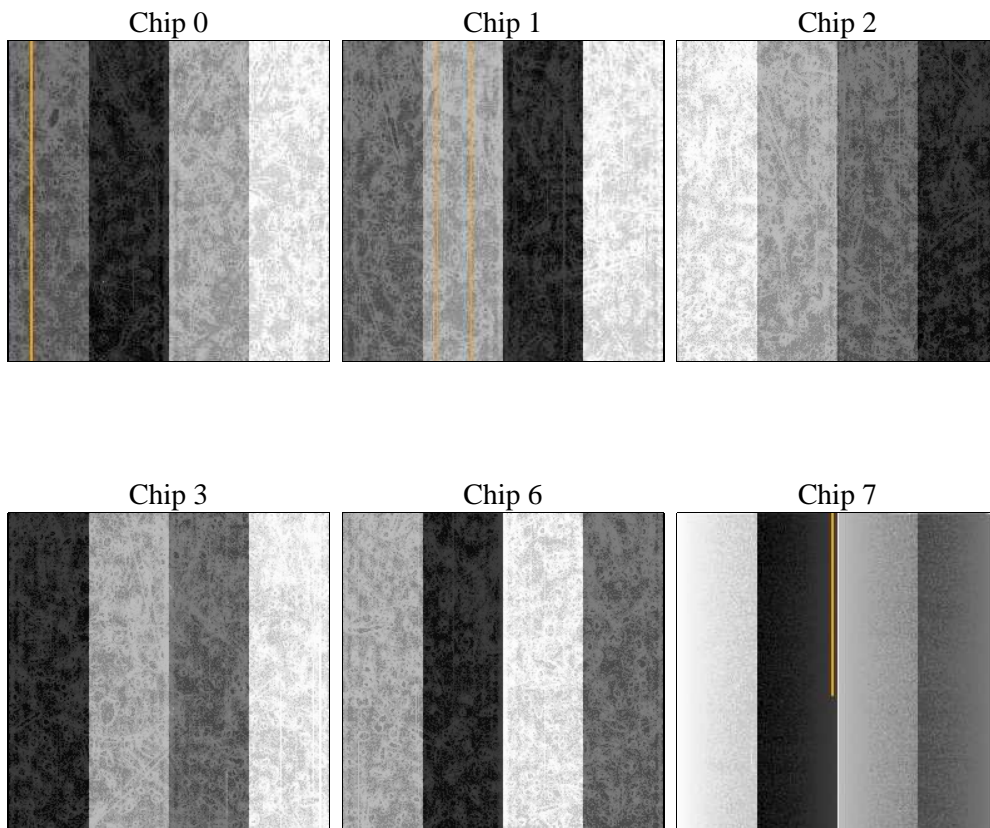
2 OBI

2.1 OBI

2.1.1 Images



2.1.2 Bias



2.1.3 Parameters

obi_num	0	Obi number	sched_exp_time	0.0	[s] Scheduled observation exposure time
ascdsver	8.4.4	Processing system revision	ontime	3275.8154458404	Sum of GTIs [s]
caldsver	4.4.9	 	ontime0	3275.7744058371	Sum of GTIs [s]
date	2012-06-01T10:35:56	Date and time of file creation	ontime1	3275.7333658338	Sum of GTIs [s]
revision	2	Processing version of data	ontime2	3275.6923258305	Sum of GTIs [s]
			ontime3	3275.8564858437	Sum of GTIs [s]
			ontime6	3275.6512858272	Sum of GTIs [s]
			ontime7	3275.8154458404	Sum of GTIs [s]
			l1events	385492	Number of level 1 events

2.1.4 Events

	ccd 0	ccd 1	ccd 2	ccd 3	ccd 6	ccd 7		ccd 0	ccd 1	ccd 2	ccd 3	ccd 6	ccd 7
level 1 events	59513	61270	62319	62418	64174	75798	grade 0 events	17376	17533	17910	18073	18061	9056
rejected events	26862	28036	29205	29235	29774	27451		29%	28%	28%	28%	28%	11%
rejected %	45%	45%	46%	46%	46%	36%	grade 1 events	135	117	164	151	114	71
								0%	0%	0%	0%	0%	0%
							grade 2 events	5918	6135	5852	5872	6122	10596
								9%	10%	9%	9%	9%	13%
							grade 3 events	2197	2160	2236	2309	2300	4582
								3%	3%	3%	3%	3%	6%
							grade 4 events	2147	2226	2239	2274	2149	4520
								3%	3%	3%	3%	3%	5%
							grade 5 events	1544	1691	1472	1809	1763	4455
								2%	2%	2%	2%	2%	5%
							grade 6 events	5013	5180	4877	4655	5768	19593
								8%	8%	7%	7%	8%	25%
							grade 7 events	25183	26228	27569	27275	27897	22925
								42%	42%	44%	43%	43%	30%

2.2 Compared Parameters

Parameter	Planned	Actual	Parameter	Planned	Actual
Instrument	ACIS	ACIS	Obspar format version number	7	7
Detector	ACIS-012367	ACIS-012367	Obspar file type	PREDICTED	ACTUAL
Grating	NONE	NONE	Obspar update status	NONE	UPDATED
Data mode	FAINT	FAINT	Number of optional ACIS chips dropped	0	0
Observation mode	SECONDARY	SECONDARY	On-chip summing requested	N	N
[deg] Pointing RA	0	155.9980556922454	Subarray requested	NONE	NONE
[deg] Pointing Dec	0	11.02510981306333	Alternating exposures requested	N	N
[deg] Pointing Roll	0.0	72.33804932410098	[s] Primary exposure time	3.2	3.2
[mm] SIM focus pos	-1.429586	-0.6828225247311905			
[mm] SIM defocus	0.1037507710433287	0.8505141146731063			
[mm] SIM translation stage pos	250.455976	250.4635187648994			
[mm] SIM translation stage offset	0	-0.007540371344731511			
[s] Observation start time (MET)	350461924.936399	350461923.91139			
Observation start date	2009-02-08T06:32:05	2009-02-08T06:32:03			
[s] Observation end time (MET)	350482845.187438	350482844.16243			
Observation end date	2009-02-08T12:20:45	2009-02-08T12:20:44			
Read mode	TIMED	TIMED			

2.3 Star Slots

2.4 FID Slots

A Summary

A.1 Status

V&V Scientist	Beth Sundheim
V&V Date (YYYY-MM-DD)	2012.06.06
V&V Edition	1
V&V Disposition and Status	OK
V&V Charge Time	3.2758154458404

A.2 Comments