

V&V Reference Report

L2 ASCDS Version : 8.4.4

Observation 57256 - L2 Version 2
Chandra X-Ray Center

L2 Processing Date : Jun 2 2012

Contents

1	Front	2
2	OBI	3
2.1	OBI	3
2.1.1	Images	3
2.1.2	Bias	3
2.1.3	Parameters	4
2.1.4	Events	4
2.2	Compared Parameters	5
2.3	Star Slots	6
2.4	FID Slots	6
A	Summary	7
A.1	Status	7
A.2	Comments	7

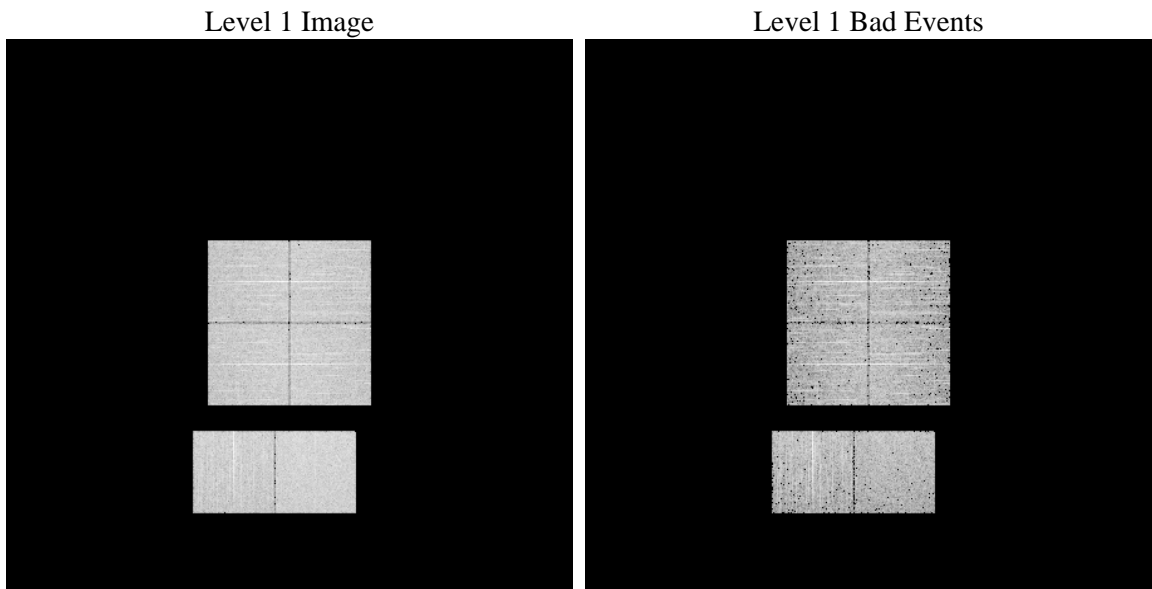
1 Front

seq_num	 	Sequence number
obs_id	57256	Observation id
title	ACIS-012367 diagnostics	Proposal title
observer	CHANDRA engineering request/realtime commanding	Principal investig
object	 	Source name
dtcycle	0	
cycle	P	events from which exps? Prim/Second/Both
ra_targ	0.0	Observer's specified target RA [deg]
dec_targ	0.0	Observer's specified target Dec [deg]
ra_nom	176.96708941146	Nominal RA [deg]
dec_nom	28.998239178234	Nominal Dec [deg]
roll_nom	150.65316153481	Nominal Roll [deg]
revision	2	Processing version of data
ontime	3276.6701728106	Sum of GTIs [s]
livetime	3235.1790021085	Livetime [s]
ontime0	3276.6701628566	Sum of GTIs [s]
ontime1	3276.668987155	Sum of GTIs [s]
ontime2	3276.6279471517	Sum of GTIs [s]
ontime3	3276.6701628566	Sum of GTIs [s]
ontime6	3276.5869071484	Sum of GTIs [s]
ontime7	3276.6701728106	Sum of GTIs [s]
l2events	201715	Number of level 2 events

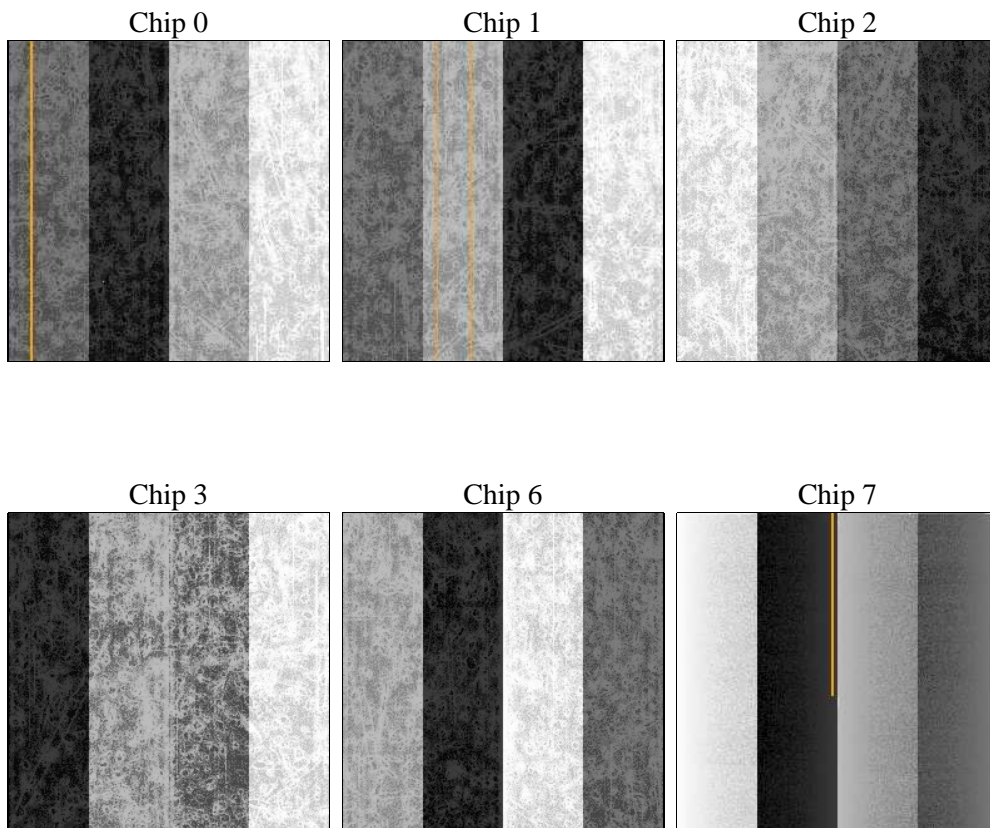
2 OBI

2.1 OBI

2.1.1 Images



2.1.2 Bias



2.1.3 Parameters

obi_num	0	Obi number	sched_exp_time	0.0	[s] Scheduled observation exposure time
ascdsver	8.4.4	Processing system revision	ontime	3276.6701728106	Sum of GTIs [s]
caldsver	4.4.9	 	ontime0	3276.6701628566	Sum of GTIs [s]
date	2012-06-02T03:19:44	Date and time of file creation	ontime1	3276.668987155	Sum of GTIs [s]
revision	2	Processing version of data	ontime2	3276.6279471517	Sum of GTIs [s]
			ontime3	3276.6701628566	Sum of GTIs [s]
			ontime6	3276.5869071484	Sum of GTIs [s]
			ontime7	3276.6701728106	Sum of GTIs [s]
			l1events	390359	Number of level 1 events

2.1.4 Events

	ccd 0	ccd 1	ccd 2	ccd 3	ccd 6	ccd 7		ccd 0	ccd 1	ccd 2	ccd 3	ccd 6	ccd 7
level 1 events	60855	62573	62065	63356	66065	75445	grade 0 events	17370	17231	17742	18198	17883	9135
rejected events	28407	29631	29266	30217	32024	27651		28%	27%	28%	28%	27%	12%
rejected %	46%	47%	47%	47%	48%	36%	grade 1 events	123	130	131	144	105	69
								0%	0%	0%	0%	0%	0%
							grade 2 events	5882	6232	5753	5605	6081	10225
								9%	9%	9%	8%	9%	13%
							grade 3 events	2232	2197	2276	2247	2247	4408
								3%	3%	3%	3%	3%	5%
							grade 4 events	2094	2168	2220	2269	2195	4383
								3%	3%	3%	3%	3%	5%
							grade 5 events	1577	1629	1556	1783	1766	4536
								2%	2%	2%	2%	2%	6%
							grade 6 events	4870	5114	4808	4820	5635	19643
								8%	8%	7%	7%	8%	26%
							grade 7 events	26707	27872	27579	28290	30153	23046
								43%	44%	44%	44%	45%	30%

2.2 Compared Parameters

Parameter	Planned	Actual
Instrument	ACIS	ACIS
Detector	ACIS-012367	ACIS-012367
Grating	NONE	NONE
Data mode	FAINT	FAINT
Observation mode	SECONDARY	SECONDARY
[deg] Pointing RA	0	176.9670894114621
[deg] Pointing Dec	0	28.99823917823417
[deg] Pointing Roll	0.0	150.6531615348113
[mm] SIM focus pos	-1.429586	-0.7809083437167272
[mm] SIM defocus	0.1037507710433287	0.7524282956875696
[mm] SIM translation stage pos	250.455976	250.4635187648994
[mm] SIM translation stage offset	0	-0.007540371344731511
[s] Observation start time (MET)	352518349.738399	352518348.7134
Observation start date	2009-03-04T01:45:50	2009-03-04T01:45:48
[s] Observation end time (MET)	352523370.188648	352523369.16365
Observation end date	2009-03-04T03:09:30	2009-03-04T03:09:29
Read mode	TIMED	TIMED

Parameter	Planned	Actual
Obspar format version number	7	7
Obspar file type	PREDICTED	ACTUAL
Obspar update status	NONE	UPDATED
Number of optional ACIS chips dropped	0	0
On-chip summing requested	N	N
Subarray requested	NONE	NONE
Alternating exposures requested	N	N
[s] Primary exposure time	3.2	3.2

2.3 Star Slots

2.4 FID Slots

A Summary

A.1 Status

V&V Scientist	Jen Lauer
V&V Date (YYYY-MM-DD)	2012.06.07
V&V Edition	1
V&V Disposition and Status	OK
V&V Charge Time	3.2766701728106

A.2 Comments