

V&V Reference Report

L2 ASCDS Version : 8.4.4

Observation 57235 - L2 Version 2
Chandra X-Ray Center

L2 Processing Date : Jun 2 2012

Contents

1	Front	2
2	OBI	3
2.1	OBI	3
2.1.1	Images	3
2.1.2	Bias	3
2.1.3	Parameters	4
2.1.4	Events	4
2.2	Compared Parameters	5
2.3	Star Slots	6
2.4	FID Slots	6
A	Summary	7
A.1	Status	7
A.2	Comments	7

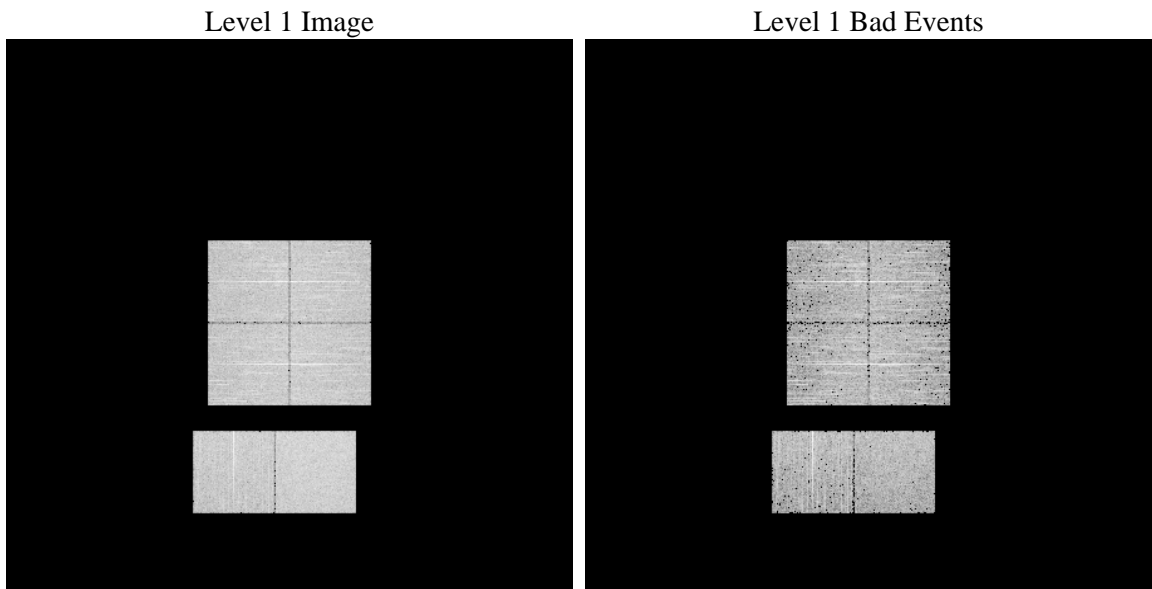
1 Front

seq_num	 	Sequence number
obs_id	57235	Observation id
title	ACIS-012367 diagnostics	Proposal title
observer	CHANDRA engineering request/realtime commanding	Principal investig
object	 	Source name
dtcycle	0	
cycle	P	events from which exps? Prim/Second/Both
ra_targ	0.0	Observer's specified target RA [deg]
dec_targ	0.0	Observer's specified target Dec [deg]
ra_nom	149.99416392631	Nominal RA [deg]
dec_nom	19.974810798283	Nominal Dec [deg]
roll_nom	236.86844852316	Nominal Roll [deg]
revision	2	Processing version of data
ontime	3270.3999878764	Sum of GTIs [s]
livetime	3228.9882140315	Livetime [s]
ontime0	3263.9180068374	Sum of GTIs [s]
ontime1	3270.3999878764	Sum of GTIs [s]
ontime2	3267.1589775681	Sum of GTIs [s]
ontime3	3270.3999878764	Sum of GTIs [s]
ontime6	3270.3999878764	Sum of GTIs [s]
ontime7	3270.3999878764	Sum of GTIs [s]
l2events	199836	Number of level 2 events

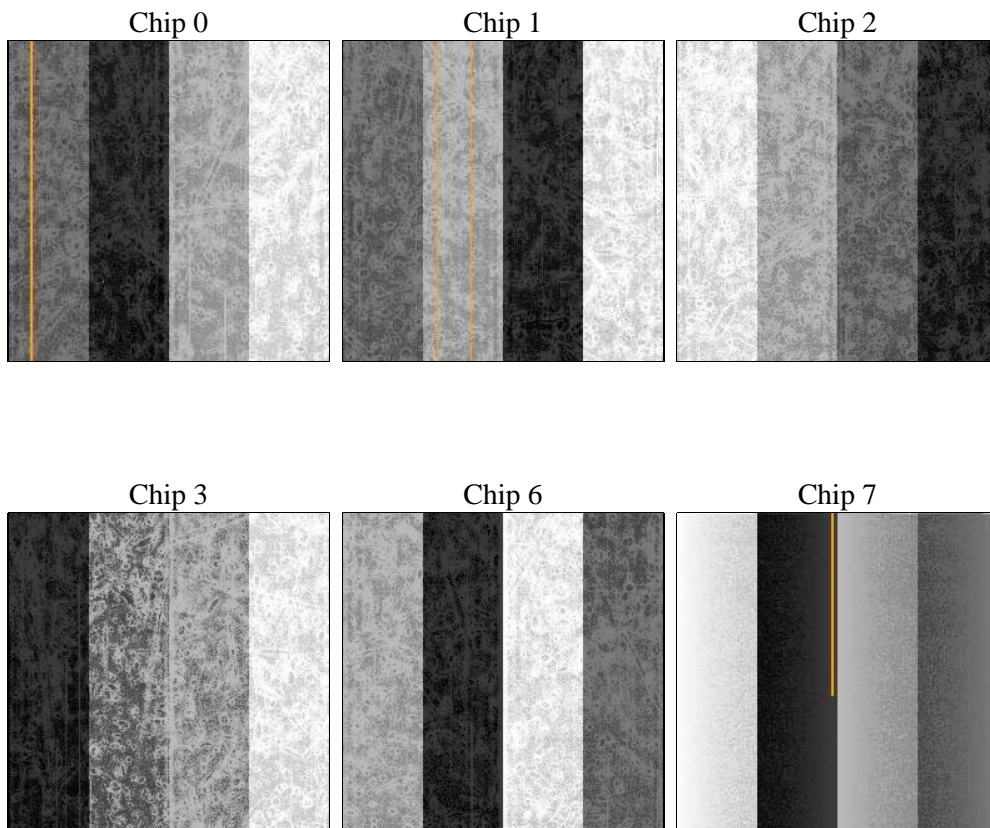
2 OBI

2.1 OBI

2.1.1 Images



2.1.2 Bias



2.1.3 Parameters

obi_num	0	Obi number	sched_exp_time	0.0	[s] Scheduled observation exposure time
ascdsver	8.4.4	Processing system revision	ontime	3270.3999878764	Sum of GTIs [s]
caldsver	4.4.9	 	ontime0	3263.9180068374	Sum of GTIs [s]
date	2012-06-02T16:36:02	Date and time of file creation	ontime1	3270.3999878764	Sum of GTIs [s]
revision	2	Processing version of data	ontime2	3267.1589775681	Sum of GTIs [s]
			ontime3	3270.3999878764	Sum of GTIs [s]
			ontime6	3270.3999878764	Sum of GTIs [s]
			ontime7	3270.3999878764	Sum of GTIs [s]
			l1events	388345	Number of level 1 events

2.1.4 Events

	ccd 0	ccd 1	ccd 2	ccd 3	ccd 6	ccd 7		ccd 0	ccd 1	ccd 2	ccd 3	ccd 6	ccd 7
level 1 events	60196	61794	63464	63984	63334	75573	grade 0 events	17172	17031	17728	17867	17778	9280
rejected events	28101	29300	30887	31432	29605	27708		28%	27%	27%	27%	28%	12%
rejected %	46%	47%	48%	49%	46%	36%	grade 1 events	138	111	162	143	125	60
								0%	0%	0%	0%	0%	0%
							grade 2 events	5837	6100	5590	5726	5946	10489
								9%	9%	8%	8%	9%	13%
							grade 3 events	2182	2179	2273	2214	2180	4488
								3%	3%	3%	3%	3%	5%
							grade 4 events	2193	2158	2236	2213	2183	4426
								3%	3%	3%	3%	3%	5%
							grade 5 events	1608	1798	1535	1798	1746	4681
								2%	2%	2%	2%	2%	6%
							grade 6 events	4747	5062	4785	4562	5671	19219
								7%	8%	7%	7%	8%	25%
							grade 7 events	26319	27355	29155	29461	27705	22930
								43%	44%	45%	46%	43%	30%

2.2 Compared Parameters

Parameter	Planned	Actual	Parameter	Planned	Actual
Instrument	ACIS	ACIS	Obspar format version number	7	7
Detector	ACIS-012367	ACIS-012367	Obspar file type	PREDICTED	ACTUAL
Grating	NONE	NONE	Obspar update status	NONE	UPDATED
Data mode	FAINT	FAINT	Number of optional ACIS chips dropped	0	0
Observation mode	SECONDARY	SECONDARY	On-chip summing requested	N	N
[deg] Pointing RA	0	149.994163926307	Subarray requested	NONE	NONE
[deg] Pointing Dec	0	19.9748107982829	Alternating exposures requested	N	N
[deg] Pointing Roll	0.0	236.8684485231592	[s] Primary exposure time	3.2	3.2
[mm] SIM focus pos	-1.429586	-0.6828225247311905			
[mm] SIM defocus	0.1037507710433287	0.8505141146731063			
[mm] SIM translation stage pos	250.455976	250.466033080201			
[mm] SIM translation stage offset	0	-0.01005468664627074			
[s] Observation start time (MET)	353432122.93378	353432121.90878			
Observation start date	2009-03-14T15:35:23	2009-03-14T15:35:21			
[s] Observation end time (MET)	353436967.084021	353436966.05902			
Observation end date	2009-03-14T16:56:07	2009-03-14T16:56:06			
Read mode	TIMED	TIMED			

2.3 Star Slots

2.4 FID Slots

A Summary

A.1 Status

V&V Scientist	Beth Sundheim
V&V Date (YYYY-MM-DD)	2012.06.07
V&V Edition	1
V&V Disposition and Status	OK
V&V Charge Time	3.2703999878764

A.2 Comments