

V&V Reference Report

L2 ASCDS Version : 8.4.4

Observation 57229 - L2 Version 2
Chandra X-Ray Center

L2 Processing Date : Jun 2 2012

Contents

| | | |
|----------|-------------------------------|----------|
| 1 | Front | 2 |
| 2 | OBI | 3 |
| 2.1 | OBI | 3 |
| 2.1.1 | Images | 3 |
| 2.1.2 | Bias | 3 |
| 2.1.3 | Parameters | 4 |
| 2.1.4 | Events | 4 |
| 2.2 | Compared Parameters | 5 |
| 2.3 | Star Slots | 6 |
| 2.4 | FID Slots | 6 |
| A | Summary | 7 |
| A.1 | Status | 7 |
| A.2 | Comments | 7 |

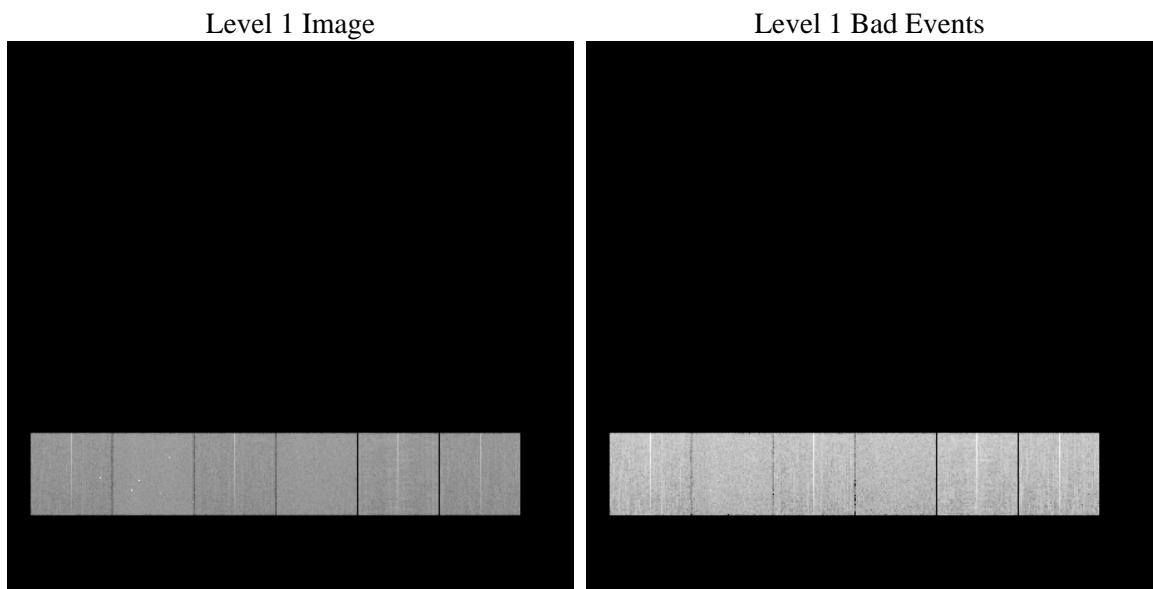
1 Front

| | | |
|----------|---|---|
| seq_num | | Sequence number |
| obs_id | 57229 | Observation id |
| title | ACIS-456789 diagnostics | Proposal title |
| observer | CHANDRA engineering request/realtime commanding | Principal investig |
| object | | Source name |
| dtcycle | 0 | |
| cycle | P | events from which exps? Prim/Second/Both |
| ra_targ | 0.0 | Observer's specified target RA [deg] |
| dec_targ | 0.0 | Observer's specified target Dec [deg] |
| ra_nom | 172.42901509354 | Nominal RA [deg] |
| dec_nom | -22.489900349118 | Nominal Dec [deg] |
| roll_nom | 347.78876136272 | Nominal Roll [deg] |
| revision | 2 | Processing version of data |
| ontime | 7676.7999714613 | Sum of GTIs [s] |
| livetime | 7579.5917078087 | Livetime [s] |
| ontime4 | 7676.7999714613 | Sum of GTIs [s] |
| ontime5 | 7676.7999714613 | Sum of GTIs [s] |
| ontime6 | 7676.7999714613 | Sum of GTIs [s] |
| ontime7 | 7676.7999714613 | Sum of GTIs [s] |
| ontime8 | 7676.7999714613 | Sum of GTIs [s] |
| ontime9 | 7676.7999714613 | Sum of GTIs [s] |
| l2events | 500625 | Number of level 2 events |

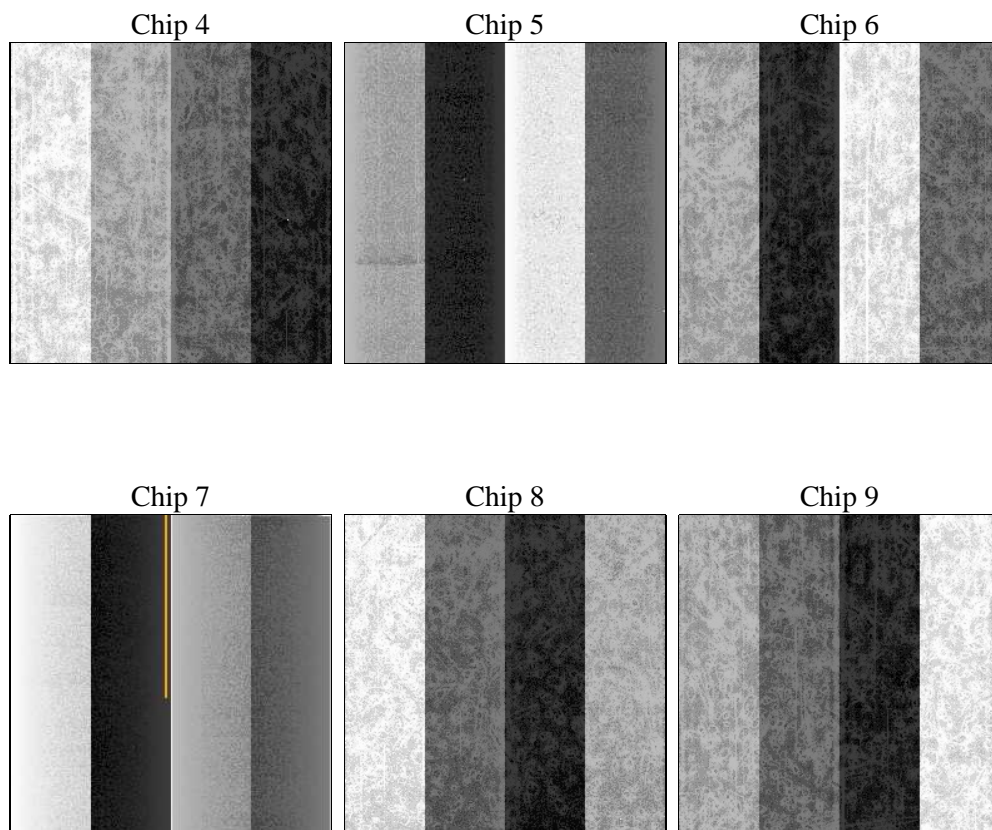
2 OBI

2.1 OBI

2.1.1 Images



2.1.2 Bias



2.1.3 Parameters

| | | | | | |
|----------|---------------------|--------------------------------|----------------|-----------------|---|
| obi_num | 0 | Obi number | sched_exp_time | 0.0 | [s] Scheduled observation exposure time |
| ascdsver | 8.4.4 | Processing system revision | ontime | 7676.7999714613 | Sum of GTIs [s] |
| caldsver | 4.4.9 | | ontime4 | 7676.7999714613 | Sum of GTIs [s] |
| date | 2012-06-02T18:46:42 | Date and time of file creation | ontime5 | 7676.7999714613 | Sum of GTIs [s] |
| revision | 2 | Processing version of data | ontime6 | 7676.7999714613 | Sum of GTIs [s] |
| | | | ontime7 | 7676.7999714613 | Sum of GTIs [s] |
| | | | ontime8 | 7676.7999714613 | Sum of GTIs [s] |
| | | | ontime9 | 7676.7999714613 | Sum of GTIs [s] |
| | | | l1events | 1005169 | Number of level 1 events |

2.1.4 Events

| | ccd 4 | ccd 5 | ccd 6 | ccd 7 | ccd 8 | ccd 9 | | ccd 4 | ccd 5 | ccd 6 | ccd 7 | ccd 8 | ccd 9 |
|-----------------|--------|--------|--------|--------|--------|--------|----------------|-------|-------|-------|-------|-------|-------|
| level 1 events | 154968 | 185141 | 154276 | 178560 | 175641 | 156583 | grade 0 events | 43785 | 18415 | 42031 | 20966 | 46182 | 41355 |
| rejected events | 79477 | 72021 | 75329 | 67705 | 83240 | 79756 | | 28% | 9% | 27% | 11% | 26% | 26% |
| rejected % | 51% | 38% | 48% | 37% | 47% | 50% | grade 1 events | 476 | 219 | 289 | 166 | 330 | 311 |
| | | | | | | | | 0% | 0% | 0% | 0% | 0% | 0% |
| | | | | | | | grade 2 events | 12269 | 40416 | 14410 | 24118 | 17502 | 13770 |
| | | | | | | | | 7% | 21% | 9% | 13% | 9% | 8% |
| | | | | | | | grade 3 events | 5325 | 5228 | 5057 | 10401 | 6925 | 5224 |
| | | | | | | | | 3% | 2% | 3% | 5% | 3% | 3% |
| | | | | | | | grade 4 events | 5246 | 5242 | 5285 | 10345 | 6675 | 5300 |
| | | | | | | | | 3% | 2% | 3% | 5% | 3% | 3% |
| | | | | | | | grade 5 events | 4094 | 9694 | 4316 | 10763 | 5619 | 4653 |
| | | | | | | | | 2% | 5% | 2% | 6% | 3% | 2% |
| | | | | | | | grade 6 events | 9874 | 45288 | 13192 | 46457 | 16293 | 12161 |
| | | | | | | | | 6% | 24% | 8% | 26% | 9% | 7% |
| | | | | | | | grade 7 events | 73899 | 60639 | 69696 | 55344 | 76115 | 73809 |
| | | | | | | | | 47% | 32% | 45% | 30% | 43% | 47% |

2.2 Compared Parameters

| Parameter | Planned | Actual | Parameter | Planned | Actual |
|-----------------------------------|---------------------|----------------------|---------------------------------------|-----------|---------|
| Instrument | ACIS | ACIS | Obspar format version number | 7 | 7 |
| Detector | ACIS-456789 | ACIS-456789 | Obspar file type | PREDICTED | ACTUAL |
| Grating | NONE | NONE | Obspar update status | NONE | UPDATED |
| Data mode | FAINT | FAINT | Number of optional ACIS chips dropped | 0 | 0 |
| Observation mode | SECONDARY | SECONDARY | On-chip summing requested | N | N |
| [deg] Pointing RA | 0 | 172.4290150935369 | Subarray requested | NONE | NONE |
| [deg] Pointing Dec | 0 | -22.48990034911785 | Alternating exposures requested | N | N |
| [deg] Pointing Roll | 0.0 | 347.7887613627214 | [s] Primary exposure time | 3.2 | 3.2 |
| [mm] SIM focus pos | -1.429586 | -0.7809083437167272 | | | |
| [mm] SIM defocus | 0.1037507710433287 | 0.7524282956875696 | | | |
| [mm] SIM translation stage pos | 250.455976 | 250.466033080201 | | | |
| [mm] SIM translation stage offset | 0 | -0.01005468664627074 | | | |
| [s] Observation start time (MET) | 353699262.547059 | 353699261.52205 | | | |
| Observation start date | 2009-03-17T17:47:43 | 2009-03-17T17:47:41 | | | |
| [s] Observation end time (MET) | 353711986.897692 | 353711985.87268 | | | |
| Observation end date | 2009-03-17T21:19:47 | 2009-03-17T21:19:45 | | | |
| Read mode | TIMED | TIMED | | | |

2.3 Star Slots

2.4 FID Slots

A Summary

A.1 Status

| | |
|----------------------------|-----------------|
| V&V Scientist | Beth Sundheim |
| V&V Date (YYYY-MM-DD) | 2012.06.07 |
| V&V Edition | 1 |
| V&V Disposition and Status | OK |
| V&V Charge Time | 7.6767999714613 |

A.2 Comments