

# V&V Reference Report

## L2 ASCDS Version : 8.4.4

Observation 57207 - L2 Version 2  
Chandra X-Ray Center

L2 Processing Date : Jun 3 2012

## Contents

<b>1</b>	<b>Front</b>	<b>2</b>
<b>2</b>	<b>OBI</b>	<b>3</b>
2.1	OBI . . . . .	3
2.1.1	Images . . . . .	3
2.1.2	Bias . . . . .	3
2.1.3	Parameters . . . . .	4
2.1.4	Events . . . . .	4
2.2	Compared Parameters . . . . .	5
2.3	Star Slots . . . . .	6
2.4	FID Slots . . . . .	6
<b>A</b>	<b>Summary</b>	<b>7</b>
A.1	Status . . . . .	7
A.2	Comments . . . . .	7

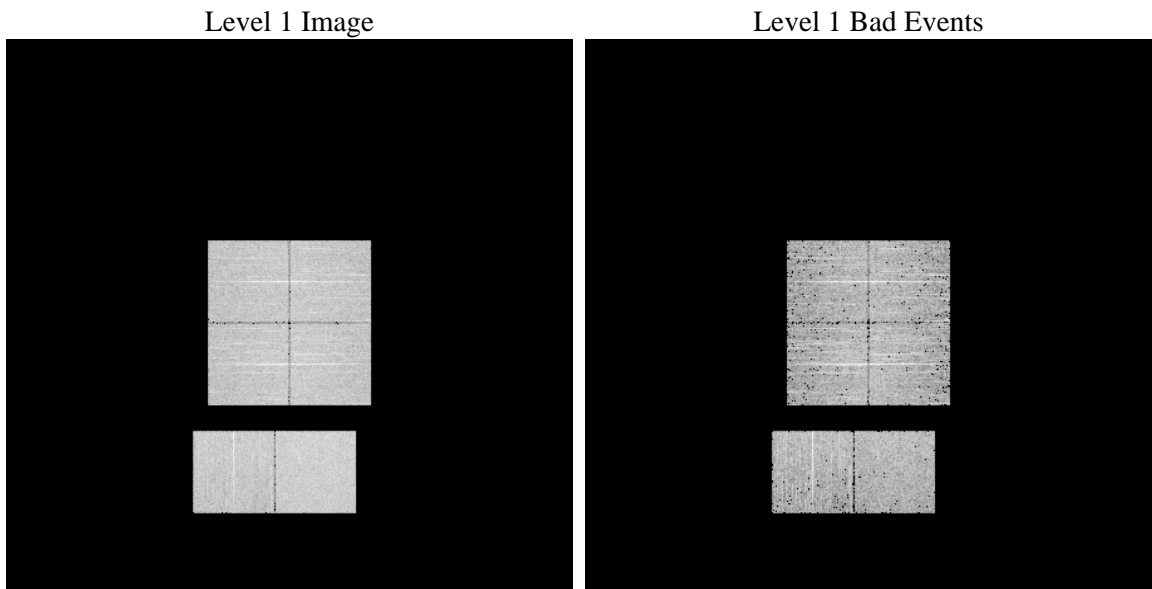
# 1 Front

seq_num	&#160	Sequence number
obs_id	57207	Observation id
title	ACIS-012367 diagnostics	Proposal title
observer	CHANDRA engineering request/realtime commanding	Principal investig
object	&#160	Source name
dtcycle	0	&#160
cycle	P	events from which exps? Prim/Second/Both
ra_targ	0.0	Observer's specified target RA [deg]
dec_targ	0.0	Observer's specified target Dec [deg]
ra_nom	204.42134304096	Nominal RA [deg]
dec_nom	-2.5794802528572	Nominal Dec [deg]
roll_nom	95.206877164518	Nominal Roll [deg]
revision	2	Processing version of data
ontime	3273.5999878645	Sum of GTIs [s]
livetime	3232.1476936929	Livetime [s]
ontime0	3273.5999878645	Sum of GTIs [s]
ontime1	3273.5999878645	Sum of GTIs [s]
ontime2	3273.5999878645	Sum of GTIs [s]
ontime3	3273.5999878645	Sum of GTIs [s]
ontime6	3273.5999878645	Sum of GTIs [s]
ontime7	3273.5999878645	Sum of GTIs [s]
l2events	199038	Number of level 2 events

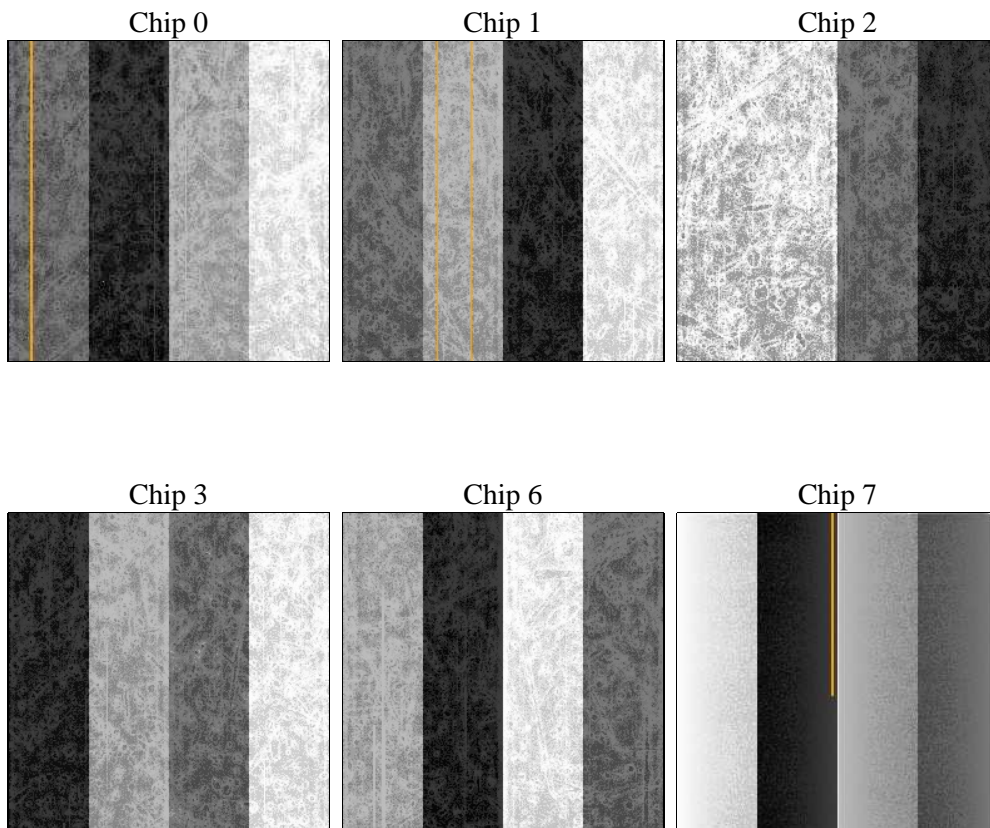
## 2 OBI

### 2.1 OBI

#### 2.1.1 Images



#### 2.1.2 Bias



### 2.1.3 Parameters

obi_num	0	Obi number	sched_exp_time	0.0	[s] Scheduled observation exposure time
ascdsver	8.4.4	Processing system revision	ontime	3273.5999878645	Sum of GTIs [s]
caldbver	4.4.9	&#160	ontime0	3273.5999878645	Sum of GTIs [s]
date	2012-06-03T10:43:59	Date and time of file creation	ontime1	3273.5999878645	Sum of GTIs [s]
revision	2	Processing version of data	ontime2	3273.5999878645	Sum of GTIs [s]
			ontime3	3273.5999878645	Sum of GTIs [s]
			ontime6	3273.5999878645	Sum of GTIs [s]
			ontime7	3273.5999878645	Sum of GTIs [s]
			l1events	386823	Number of level 1 events

### 2.1.4 Events

	ccd 0	ccd 1	ccd 2	ccd 3	ccd 6	ccd 7		ccd 0	ccd 1	ccd 2	ccd 3	ccd 6	ccd 7
level 1 events	59468	62041	62252	63959	63712	75391	grade 0 events	17150	17074	17244	17678	17644	9071
rejected events	27143	29725	30397	31455	30152	27705		28%	27%	27%	27%	27%	12%
rejected %	45%	47%	48%	49%	47%	36%	grade 1 events	137	110	122	128	106	59
								0%	0%	0%	0%	0%	0%
							grade 2 events	5862	5921	5626	5695	5972	10395
								9%	9%	9%	8%	9%	13%
							grade 3 events	2165	2146	2184	2214	2212	4510
								3%	3%	3%	3%	3%	5%
							grade 4 events	2136	2155	2206	2215	2226	4409
								3%	3%	3%	3%	3%	5%
							grade 5 events	1613	1712	1575	1869	1804	4742
								2%	2%	2%	2%	2%	6%
							grade 6 events	5012	5057	4626	4702	5534	19301
								8%	8%	7%	7%	8%	25%
							grade 7 events	25393	27866	28669	29458	28214	22904
								42%	44%	46%	46%	44%	30%

## 2.2 Compared Parameters

Parameter	Planned	Actual	Parameter	Planned	Actual
Instrument	ACIS	ACIS	Obspar format version number	7	7
Detector	ACIS-012367	ACIS-012367	Obspar file type	PREDICTED	ACTUAL
Grating	NONE	NONE	Obspar update status	NONE	UPDATED
Data mode	FAINT	FAINT	Number of optional ACIS chips dropped	0	0
Observation mode	SECONDARY	SECONDARY	On-chip summing requested	N	N
[deg] Pointing RA	0	204.4213430409589	Subarray requested	NONE	NONE
[deg] Pointing Dec	0	-2.579480252857188	Alternating exposures requested	N	N
[deg] Pointing Roll	0.0	95.20687716451754	[s] Primary exposure time	3.2	3.2
[mm] SIM focus pos	-1.429586	-0.6828225247311905			
[mm] SIM defocus	0.1037507710433287	0.8505141146731063			
[mm] SIM translation stage pos	250.455976	250.466033080201			
[mm] SIM translation stage offset	0	-0.01005468664627074			
[s] Observation start time (MET)	354803091.251905	354803090.22692			
Observation start date	2009-03-30T12:24:51	2009-03-30T12:24:50			
[s] Observation end time (MET)	354808173.202157	354808172.17717			
Observation end date	2009-03-30T13:49:33	2009-03-30T13:49:32			
Read mode	TIMED	TIMED			

## **2.3 Star Slots**

## **2.4 FID Slots**

## A Summary

### A.1 Status

V&V Scientist	Jen Lauer
V&V Date (YYYY-MM-DD)	2012.06.07
V&V Edition	1
V&V Disposition and Status	OK
V&V Charge Time	3.2735999878645

### A.2 Comments