

# V&V Reference Report

## L2 ASCDS Version : 8.4.5

Observation 57118 - L2 Version 2  
Chandra X-Ray Center

L2 Processing Date : Jun 7 2012

## Contents

<b>1</b>	<b>Front</b>	<b>2</b>
<b>2</b>	<b>OBI</b>	<b>3</b>
2.1	OBI . . . . .	3
2.1.1	Images . . . . .	3
2.1.2	Bias . . . . .	3
2.1.3	Parameters . . . . .	4
2.1.4	Events . . . . .	4
2.2	Compared Parameters . . . . .	5
2.3	Star Slots . . . . .	6
2.4	FID Slots . . . . .	6
<b>A</b>	<b>Summary</b>	<b>7</b>
A.1	Status . . . . .	7
A.2	Comments . . . . .	7

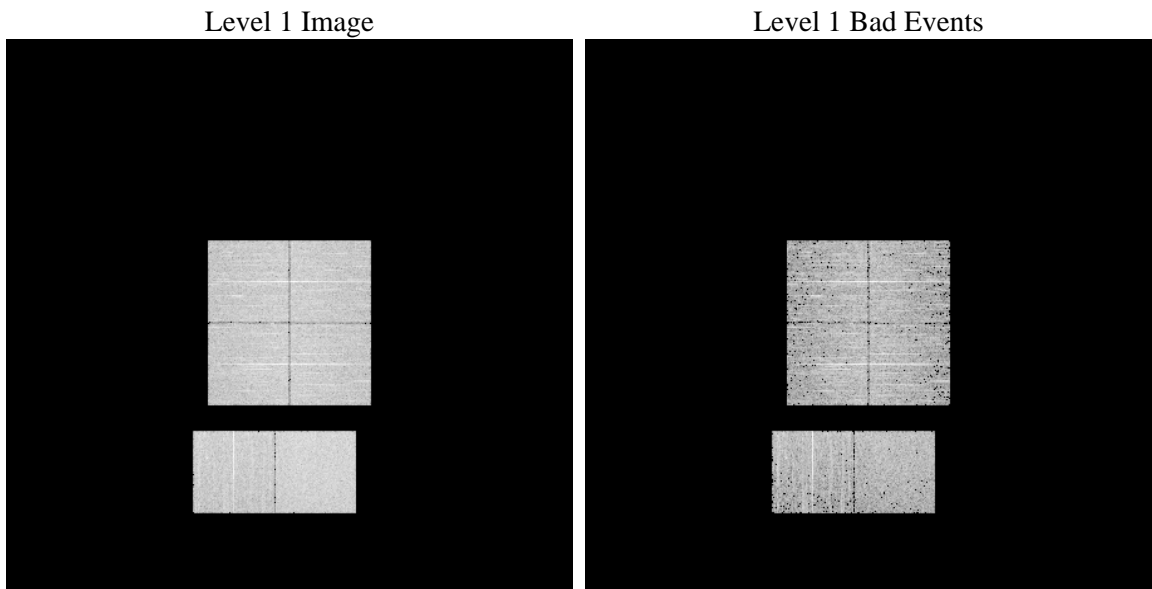
# 1 Front

seq_num	&#160	Sequence number
obs_id	57118	Observation id
title	ACIS-012367 diagnostics	Proposal title
observer	CHANDRA engineering request/realtime commanding	Principal investig
object	&#160	Source name
dtcycle	0	&#160
cycle	P	events from which exps? Prim/Second/Both
ra_targ	0.0	Observer's specified target RA [deg]
dec_targ	0.0	Observer's specified target Dec [deg]
ra_nom	221.44244666693	Nominal RA [deg]
dec_nom	-4.0011785842528	Nominal Dec [deg]
roll_nom	198.59534019276	Nominal Roll [deg]
revision	2	Processing version of data
ontime	3273.5999878645	Sum of GTIs [s]
livetime	3232.1476936929	Livetime [s]
ontime0	3273.5999878645	Sum of GTIs [s]
ontime1	3273.5999878645	Sum of GTIs [s]
ontime2	3273.5999878645	Sum of GTIs [s]
ontime3	3272.3601888418	Sum of GTIs [s]
ontime6	3273.5999878645	Sum of GTIs [s]
ontime7	3273.5999878645	Sum of GTIs [s]
l2events	194416	Number of level 2 events

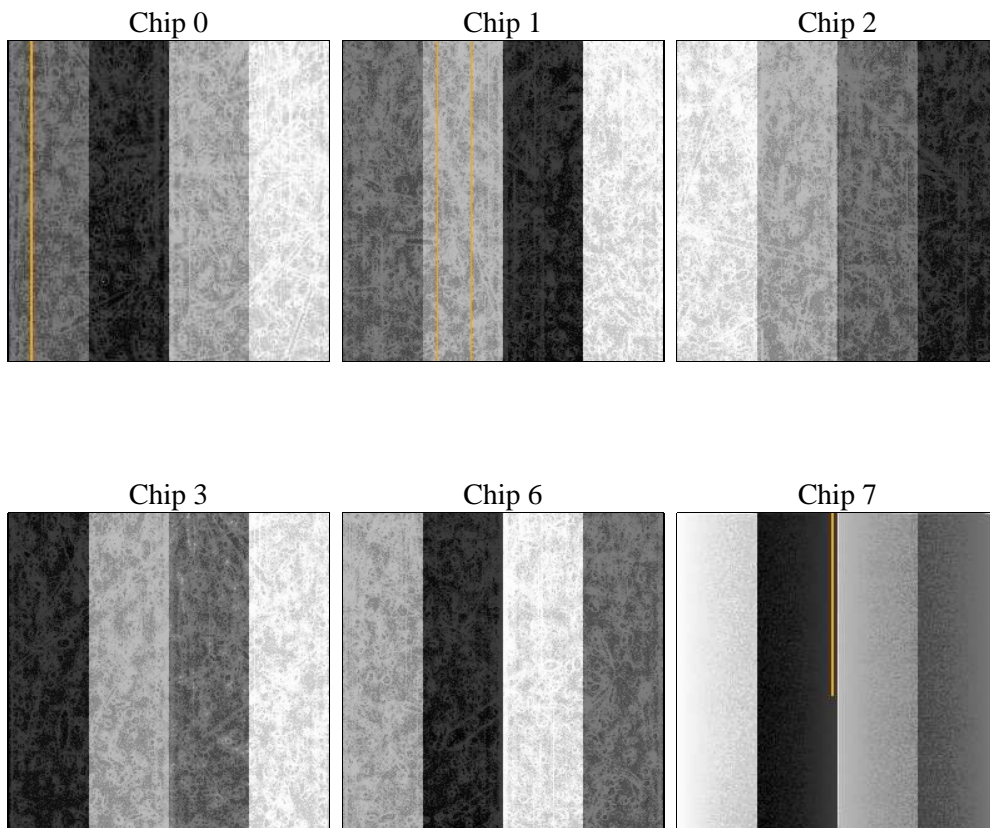
## 2 OBI

### 2.1 OBI

#### 2.1.1 Images



#### 2.1.2 Bias



### 2.1.3 Parameters

obi_num	0	Obi number	sched_exp_time	0.0	[s] Scheduled observation exposure time
ascdsver	8.4.5	Processing system revision	ontime	3273.5999878645	Sum of GTIs [s]
caldsver	4.4.10	&#160	ontime0	3273.5999878645	Sum of GTIs [s]
date	2012-06-07T04:16:10	Date and time of file creation	ontime1	3273.5999878645	Sum of GTIs [s]
revision	2	Processing version of data	ontime2	3273.5999878645	Sum of GTIs [s]
			ontime3	3272.3601888418	Sum of GTIs [s]
			ontime6	3273.5999878645	Sum of GTIs [s]
			ontime7	3273.5999878645	Sum of GTIs [s]
			l1events	378882	Number of level 1 events

### 2.1.4 Events

	ccd 0	ccd 1	ccd 2	ccd 3	ccd 6	ccd 7		ccd 0	ccd 1	ccd 2	ccd 3	ccd 6	ccd 7
level 1 events	60079	59267	61244	60953	62616	74723	grade 0 events	16875	16607	17057	17099	17008	8741
rejected events	28458	27759	29894	29261	29877	27986		28%	28%	27%	28%	27%	11%
rejected %	47%	46%	48%	48%	47%	37%	grade 1 events	127	124	144	133	137	62
								0%	0%	0%	0%	0%	0%
							grade 2 events	5707	5814	5410	5736	5987	10146
								9%	9%	8%	9%	9%	13%
							grade 3 events	2188	2131	2217	2169	2181	4400
								3%	3%	3%	3%	3%	5%
							grade 4 events	2146	2105	2150	2159	2098	4299
								3%	3%	3%	3%	3%	5%
							grade 5 events	1663	1690	1545	1801	1755	4577
								2%	2%	2%	2%	2%	6%
							grade 6 events	4737	4874	4545	4529	5503	19191
								7%	8%	7%	7%	8%	25%
							grade 7 events	26636	25922	28176	27327	27947	23307
								44%	43%	46%	44%	44%	31%

## 2.2 Compared Parameters

Parameter	Planned	Actual	Parameter	Planned	Actual
Instrument	ACIS	ACIS	Obspar format version number	7	7
Detector	ACIS-012367	ACIS-012367	Obspar file type	PREDICTED	ACTUAL
Grating	NONE	NONE	Obspar update status	NONE	UPDATED
Data mode	FAINT	FAINT	Number of optional ACIS chips dropped	0	0
Observation mode	SECONDARY	SECONDARY	On-chip summing requested	N	N
[deg] Pointing RA	0	221.4424466669276	Subarray requested	NONE	NONE
[deg] Pointing Dec	0	-4.001178584252778	Alternating exposures requested	N	N
[deg] Pointing Roll	0.0	198.5953401927625	[s] Primary exposure time	3.2	3.2
[mm] SIM focus pos	-1.429586	-0.7809083437167272			
[mm] SIM defocus	0.1037507710433287	0.7524282956875696			
[mm] SIM translation stage pos	250.455976	250.466033080201			
[mm] SIM translation stage offset	0	-0.01005468664627074			
[s] Observation start time (MET)	358233335.922707	358233334.89772			
Observation start date	2009-05-09T05:15:36	2009-05-09T05:15:34			
[s] Observation end time (MET)	358239090.272994	358239089.248			
Observation end date	2009-05-09T06:51:30	2009-05-09T06:51:29			
Read mode	TIMED	TIMED			

## **2.3 Star Slots**

## **2.4 FID Slots**

## **A Summary**

### **A.1 Status**

V&V Scientist	Jen Lauer
V&V Date (YYYY-MM-DD)	2012.06.11
V&V Edition	1
V&V Disposition and Status	OK
V&V Charge Time	3.2735999878645

### **A.2 Comments**