

# V&V Reference Report

## L2 ASCDS Version : 8.4.5

Observation 57104 - L2 Version 2  
Chandra X-Ray Center

L2 Processing Date : Jun 7 2012

## Contents

<b>1</b>	<b>Front</b>	<b>2</b>
<b>2</b>	<b>OBI</b>	<b>3</b>
2.1	OBI . . . . .	3
2.1.1	Images . . . . .	3
2.1.2	Bias . . . . .	3
2.1.3	Parameters . . . . .	4
2.1.4	Events . . . . .	4
2.2	Compared Parameters . . . . .	5
2.3	Star Slots . . . . .	6
2.4	FID Slots . . . . .	6
<b>A</b>	<b>Summary</b>	<b>7</b>
A.1	Status . . . . .	7
A.2	Comments . . . . .	7

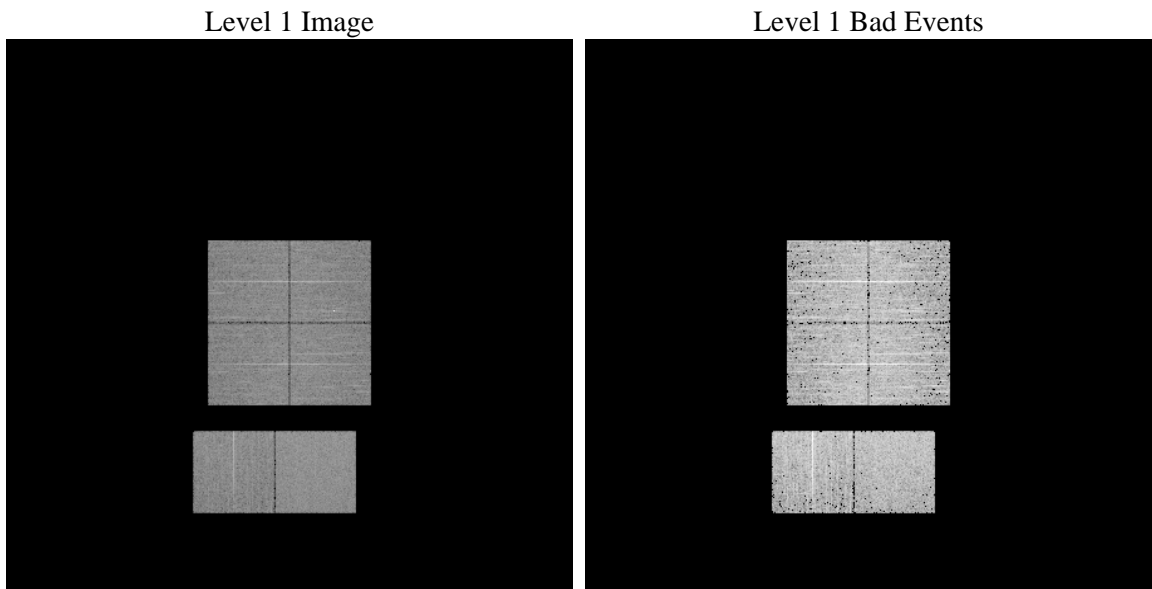
# 1 Front

seq_num	&#160	Sequence number
obs_id	57104	Observation id
title	ACIS-012367 diagnostics	Proposal title
observer	CHANDRA engineering request/realtime commanding	Principal investig
object	&#160	Source name
dtcycle	0	&#160
cycle	P	events from which exps? Prim/Second/Both
ra_targ	0.0	Observer's specified target RA [deg]
dec_targ	0.0	Observer's specified target Dec [deg]
ra_nom	24.874406101859	Nominal RA [deg]
dec_nom	-27.52026823155	Nominal Dec [deg]
roll_nom	145.8670656806	Nominal Roll [deg]
revision	2	Processing version of data
ontime	3270.3999878764	Sum of GTIs [s]
livetime	3228.9882140315	Livetime [s]
ontime0	3270.3999878764	Sum of GTIs [s]
ontime1	3270.3999878764	Sum of GTIs [s]
ontime2	3270.3999878764	Sum of GTIs [s]
ontime3	3270.3999878764	Sum of GTIs [s]
ontime6	3270.3965775967	Sum of GTIs [s]
ontime7	3270.3999878764	Sum of GTIs [s]
l2events	192975	Number of level 2 events

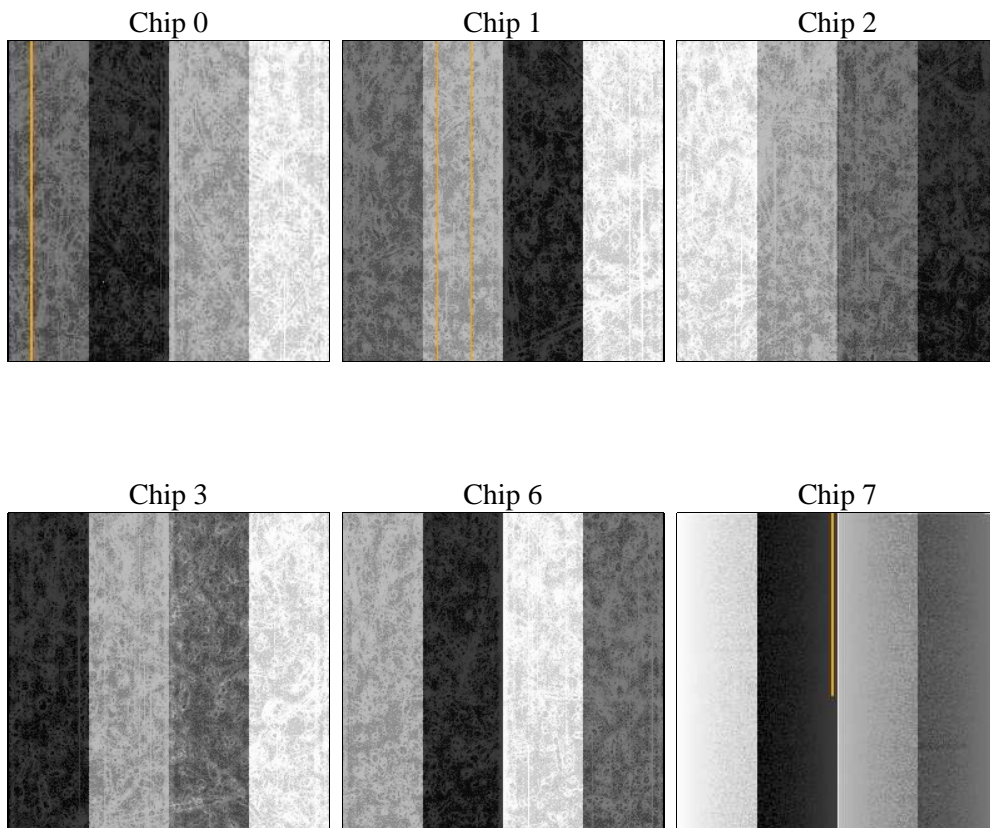
## 2 OBI

### 2.1 OBI

#### 2.1.1 Images



#### 2.1.2 Bias



### 2.1.3 Parameters

obi_num	0	Obi number	sched_exp_time	0.0	[s] Scheduled observation exposure time
ascdsver	8.4.5	Processing system revision	ontime	3270.3999878764	Sum of GTIs [s]
caldsver	4.4.10	&#160	ontime0	3270.3999878764	Sum of GTIs [s]
date	2012-06-07T15:32:37	Date and time of file creation	ontime1	3270.3999878764	Sum of GTIs [s]
revision	2	Processing version of data	ontime2	3270.3999878764	Sum of GTIs [s]
			ontime3	3270.3999878764	Sum of GTIs [s]
			ontime6	3270.3965775967	Sum of GTIs [s]
			ontime7	3270.3999878764	Sum of GTIs [s]
			l1events	382735	Number of level 1 events

### 2.1.4 Events

	ccd 0	ccd 1	ccd 2	ccd 3	ccd 6	ccd 7		ccd 0	ccd 1	ccd 2	ccd 3	ccd 6	ccd 7
level 1 events	60579	61040	60280	62418	62784	75634	grade 0 events	16562	17316	16987	17259	16893	8545
rejected events	29462	28705	29203	30940	30348	29061		27%	28%	28%	27%	26%	11%
rejected %	48%	47%	48%	49%	48%	38%	grade 1 events	125	127	116	145	112	76
								0%	0%	0%	0%	0%	0%
							grade 2 events	5653	5849	5481	5445	5838	9889
								9%	9%	9%	8%	9%	13%
							grade 3 events	2139	2188	2080	2084	2275	4347
								3%	3%	3%	3%	3%	5%
							grade 4 events	2142	2057	2015	2201	2166	4173
								3%	3%	3%	3%	3%	5%
							grade 5 events	1634	1728	1571	1787	1747	4703
								2%	2%	2%	2%	2%	6%
							grade 6 events	4648	4958	4547	4521	5292	19658
								7%	8%	7%	7%	8%	25%
							grade 7 events	27676	26817	27483	28976	28461	24243
								45%	43%	45%	46%	45%	32%

## 2.2 Compared Parameters

Parameter	Planned	Actual
Instrument	ACIS	ACIS
Detector	ACIS-012367	ACIS-012367
Grating	NONE	NONE
Data mode	FAINT	FAINT
Observation mode	SECONDARY	SECONDARY
[deg] Pointing RA	0	24.8744061018586
[deg] Pointing Dec	0	-27.5202682315503
[deg] Pointing Roll	0.0	145.8670656806005
[mm] SIM focus pos	-1.429586	-0.7809083437167272
[mm] SIM defocus	0.1037507710433287	0.7524282956875696
[mm] SIM translation stage pos	250.455976	250.4635187648994
[mm] SIM translation stage offset	0	-0.007540371344731511
[s] Observation start time (MET)	358918843.656947	358918842.6319
Observation start date	2009-05-17T03:40:44	2009-05-17T03:40:42
[s] Observation end time (MET)	358923667.307188	358923666.28214
Observation end date	2009-05-17T05:01:07	2009-05-17T05:01:06
Read mode	TIMED	TIMED

Parameter	Planned	Actual
Obspar format version number	7	7
Obspar file type	PREDICTED	ACTUAL
Obspar update status	NONE	UPDATED
Number of optional ACIS chips dropped	0	0
On-chip summing requested	N	N
Subarray requested	NONE	NONE
Alternating exposures requested	N	N
[s] Primary exposure time	3.2	3.2

## **2.3 Star Slots**

## **2.4 FID Slots**

## A Summary

### A.1 Status

V&V Scientist	Beth Sundheim
V&V Date (YYYY-MM-DD)	2012.06.11
V&V Edition	1
V&V Disposition and Status	OK
V&V Charge Time	3.2703999878764

### A.2 Comments