

# V&V Reference Report

## L2 ASCDS Version : 8.4.5

Observation 57083 - L2 Version 2  
Chandra X-Ray Center

L2 Processing Date : Jun 8 2012

## Contents

<b>1</b>	<b>Front</b>	<b>2</b>
<b>2</b>	<b>OBI</b>	<b>3</b>
2.1	OBI . . . . .	3
2.1.1	Images . . . . .	3
2.1.2	Bias . . . . .	3
2.1.3	Parameters . . . . .	4
2.1.4	Events . . . . .	4
2.2	Compared Parameters . . . . .	5
2.3	Star Slots . . . . .	6
2.4	FID Slots . . . . .	6
<b>A</b>	<b>Summary</b>	<b>7</b>
A.1	Status . . . . .	7
A.2	Comments . . . . .	7

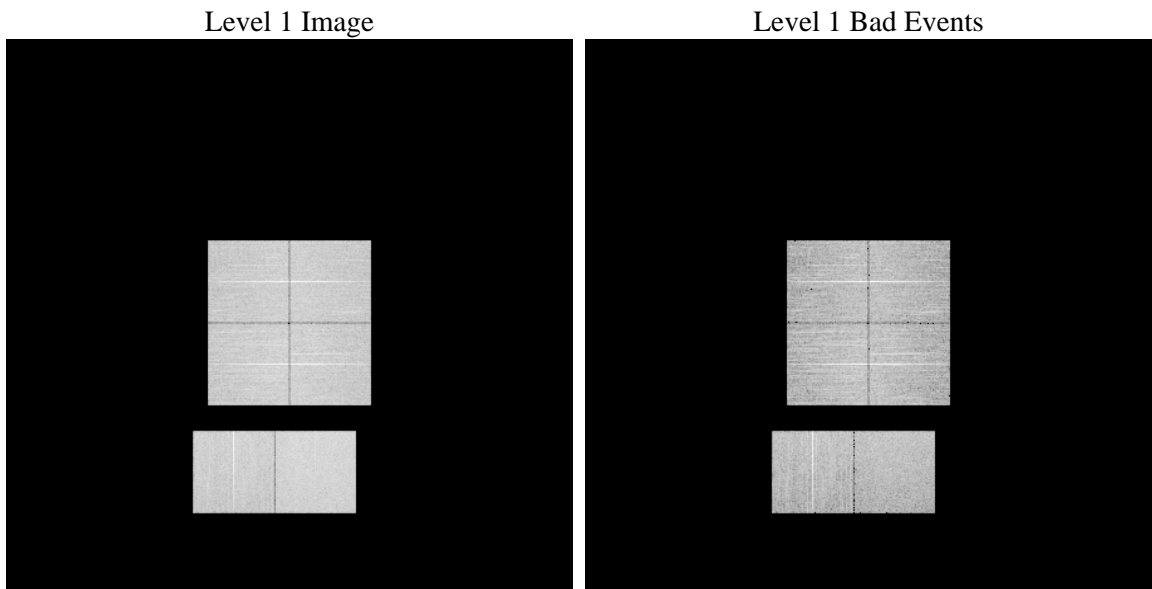
# 1 Front

seq_num	&#160	Sequence number
obs_id	57083	Observation id
title	ACIS-012367 diagnostics	Proposal title
observer	CHANDRA engineering request/realtime commanding	Principal investig
object	&#160	Source name
dtcycle	0	&#160
cycle	P	events from which exps? Prim/Second/Both
ra_targ	0.0	Observer's specified target RA [deg]
dec_targ	0.0	Observer's specified target Dec [deg]
ra_nom	279.97726938886	Nominal RA [deg]
dec_nom	-14.481512188455	Nominal Dec [deg]
roll_nom	107.0631135558	Nominal Roll [deg]
revision	2	Processing version of data
ontime	7381.9336301088	Sum of GTIs [s]
livetime	7288.4591416176	Livetime [s]
ontime0	7381.8925901055	Sum of GTIs [s]
ontime1	7381.8515501022	Sum of GTIs [s]
ontime2	7381.8105100989	Sum of GTIs [s]
ontime3	7381.9746701121	Sum of GTIs [s]
ontime6	7381.7694700956	Sum of GTIs [s]
ontime7	7381.9336301088	Sum of GTIs [s]
l2events	432403	Number of level 2 events

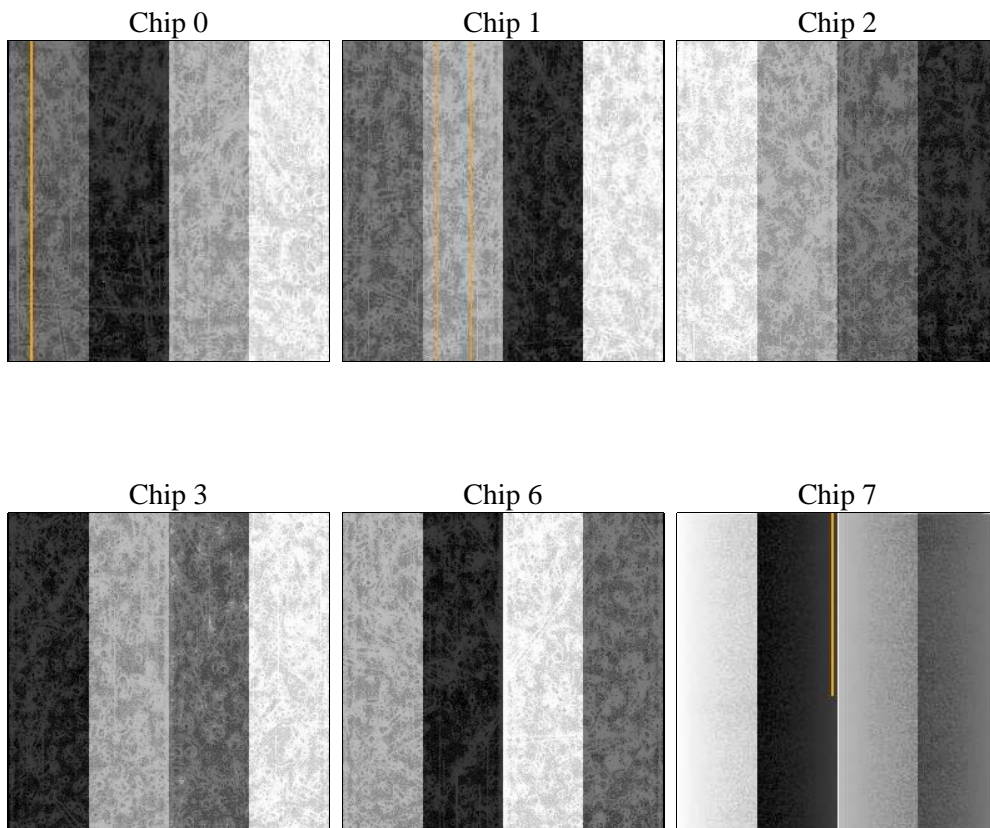
## 2 OBI

### 2.1 OBI

#### 2.1.1 Images



#### 2.1.2 Bias



### 2.1.3 Parameters

obi_num	0	Obi number	sched_exp_time	0.0	[s] Scheduled observation exposure time
ascdsver	8.4.5	Processing system revision	ontime	7381.9336301088	Sum of GTIs [s]
caldsver	4.4.10	&#160	ontime0	7381.8925901055	Sum of GTIs [s]
date	2012-06-08T06:36:35	Date and time of file creation	ontime1	7381.8515501022	Sum of GTIs [s]
revision	2	Processing version of data	ontime2	7381.8105100989	Sum of GTIs [s]
			ontime3	7381.9746701121	Sum of GTIs [s]
			ontime6	7381.7694700956	Sum of GTIs [s]
			ontime7	7381.9336301088	Sum of GTIs [s]
			l1events	873894	Number of level 1 events

### 2.1.4 Events

	ccd 0	ccd 1	ccd 2	ccd 3	ccd 6	ccd 7		ccd 0	ccd 1	ccd 2	ccd 3	ccd 6	ccd 7
level 1 events	135430	136575	145790	140978	144183	170938	grade 0 events	37287	36998	38085	38613	38427	19328
rejected events	66080	66227	76179	70638	71850	65853		27%	27%	26%	27%	26%	11%
rejected %	48%	48%	52%	50%	49%	38%	grade 1 events	294	245	296	324	252	132
								0%	0%	0%	0%	0%	0%
							grade 2 events	12576	13272	12049	12106	12792	22878
								9%	9%	8%	8%	8%	13%
							grade 3 events	4881	4755	4803	4819	4782	9835
								3%	3%	3%	3%	3%	5%
							grade 4 events	4658	4726	4779	4827	4732	9710
								3%	3%	3%	3%	3%	5%
							grade 5 events	3774	3824	3582	4087	4048	10452
								2%	2%	2%	2%	2%	6%
							grade 6 events	10382	11037	10334	10378	12013	43925
								7%	8%	7%	7%	8%	25%
							grade 7 events	61578	61718	71862	65824	67137	54678
								45%	45%	49%	46%	46%	31%

## 2.2 Compared Parameters

Parameter	Planned	Actual	Parameter	Planned	Actual
Instrument	ACIS	ACIS	Obspar format version number	7	7
Detector	ACIS-012367	ACIS-012367	Obspar file type	PREDICTED	ACTUAL
Grating	NONE	NONE	Obspar update status	NONE	UPDATED
Data mode	FAINT	FAINT	Number of optional ACIS chips dropped	0	0
Observation mode	SECONDARY	SECONDARY	On-chip summing requested	N	N
[deg] Pointing RA	0	279.9772693888646	Subarray requested	NONE	NONE
[deg] Pointing Dec	0	-14.48151218845458	Alternating exposures requested	N	N
[deg] Pointing Roll	0.0	107.0631135557958	[s] Primary exposure time	3.2	3.2
[mm] SIM focus pos	-1.429586	-0.6828225247311905			
[mm] SIM defocus	0.1037507710433287	0.8505141146731063			
[mm] SIM translation stage pos	250.455976	250.466033080201			
[mm] SIM translation stage offset	0	-0.01005468664627074			
[s] Observation start time (MET)	359869801.804204	359869800.77919			
Observation start date	2009-05-28T03:50:02	2009-05-28T03:50:00			
[s] Observation end time (MET)	359882030.054811	359882029.02979			
Observation end date	2009-05-28T07:13:50	2009-05-28T07:13:49			
Read mode	TIMED	TIMED			

## **2.3 Star Slots**

## **2.4 FID Slots**

## A Summary

### A.1 Status

V&V Scientist	Beth Sundheim
V&V Date (YYYY-MM-DD)	2012.06.12
V&V Edition	1
V&V Disposition and Status	OK
V&V Charge Time	7.3819336301088

### A.2 Comments