

V&V Reference Report

L2 ASCDS Version : 8.4.5

Observation 57045 - L2 Version 2
Chandra X-Ray Center

L2 Processing Date : Jun 8 2012

Contents

1	Front	2
2	OBI	3
2.1	OBI	3
2.1.1	Images	3
2.1.2	Bias	3
2.1.3	Parameters	4
2.1.4	Events	4
2.2	Compared Parameters	5
2.3	Star Slots	6
2.4	FID Slots	6
A	Summary	7
A.1	Status	7
A.2	Comments	7

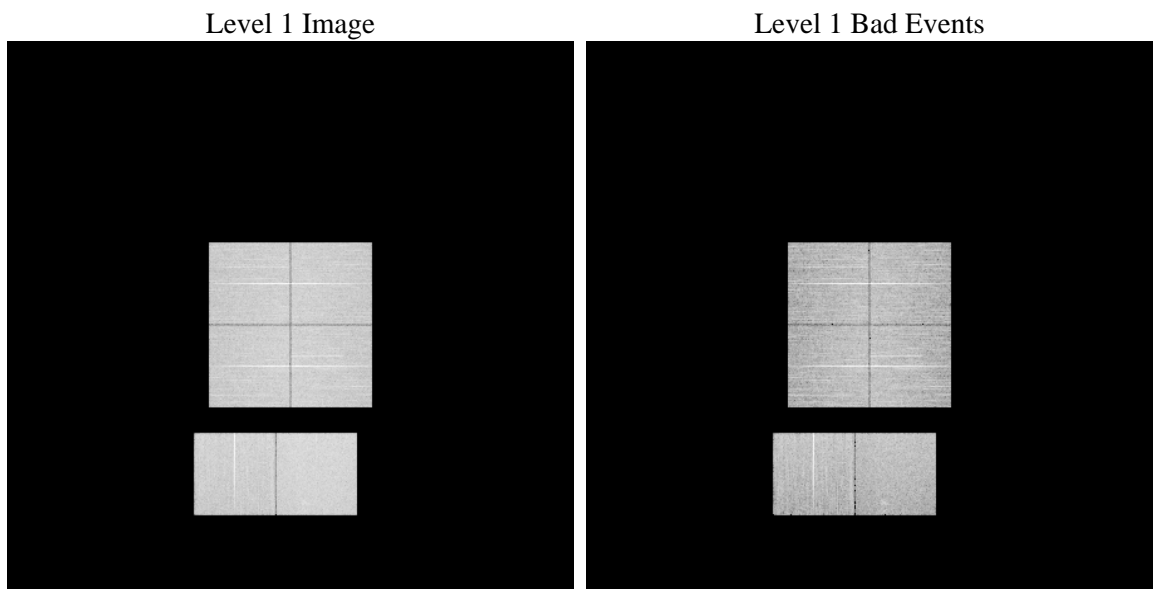
1 Front

seq_num	 	Sequence number
obs_id	57045	Observation id
title	ACIS-012367 diagnostics	Proposal title
observer	CHANDRA engineering request/realtime commanding	Principal investig
object	 	Source name
dtcycle	0	
cycle	P	events from which exps? Prim/Second/Both
ra_targ	0.0	Observer's specified target RA [deg]
dec_targ	0.0	Observer's specified target Dec [deg]
ra_nom	247.48753434675	Nominal RA [deg]
dec_nom	-2.0258321756184	Nominal Dec [deg]
roll_nom	211.30995497826	Nominal Roll [deg]
revision	2	Processing version of data
ontime	8447.2445709109	Sum of GTIs [s]
livetime	8340.280473834	Livetime [s]
ontime0	8447.2035309076	Sum of GTIs [s]
ontime1	8447.1624909043	Sum of GTIs [s]
ontime2	8447.121450901	Sum of GTIs [s]
ontime3	8447.2856109142	Sum of GTIs [s]
ontime6	8447.0804108977	Sum of GTIs [s]
ontime7	8447.2445709109	Sum of GTIs [s]
l2events	485876	Number of level 2 events

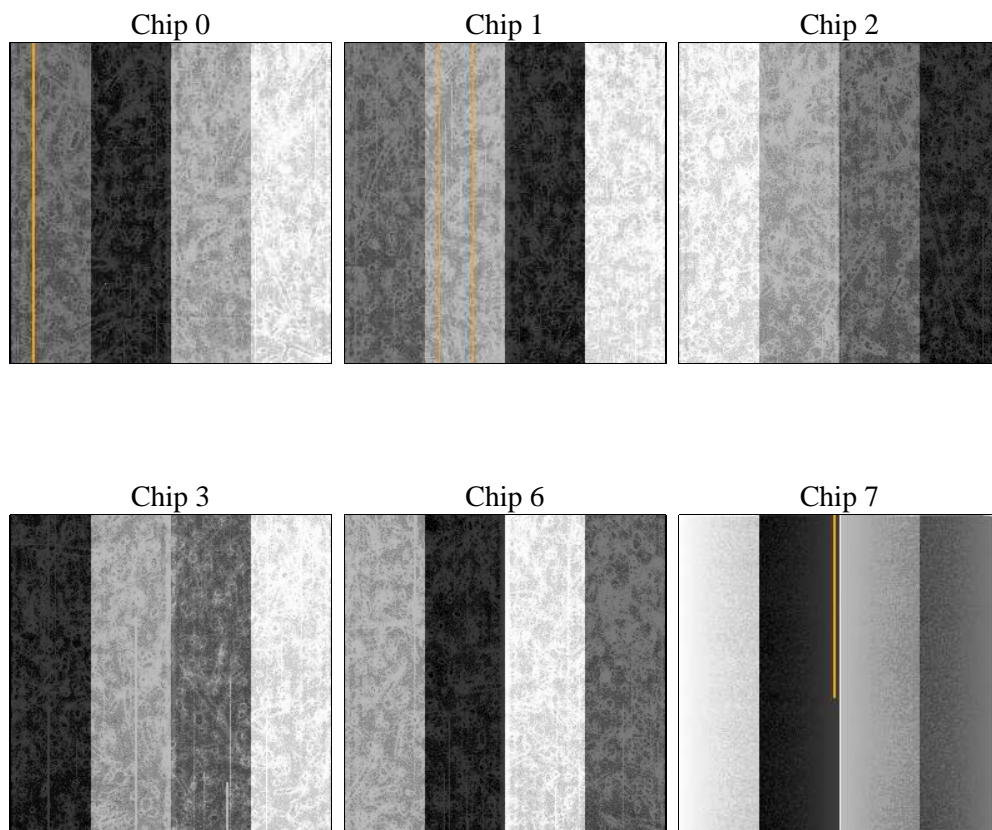
2 OBI

2.1 OBI

2.1.1 Images



2.1.2 Bias



2.1.3 Parameters

obi_num	0	Obi number	sched_exp_time	0.0	[s] Scheduled observation exposure time
ascdsver	8.4.5	Processing system revision	ontime	8447.2445709109	Sum of GTIs [s]
caldsver	4.4.10	 	ontime0	8447.2035309076	Sum of GTIs [s]
date	2012-06-08T21:32:32	Date and time of file creation	ontime1	8447.1624909043	Sum of GTIs [s]
revision	2	Processing version of data	ontime2	8447.121450901	Sum of GTIs [s]
			ontime3	8447.2856109142	Sum of GTIs [s]
			ontime6	8447.0804108977	Sum of GTIs [s]
			ontime7	8447.2445709109	Sum of GTIs [s]
			l1events	988373	Number of level 1 events

2.1.4 Events

	ccd 0	ccd 1	ccd 2	ccd 3	ccd 6	ccd 7		ccd 0	ccd 1	ccd 2	ccd 3	ccd 6	ccd 7
level 1 events	154745	156134	157598	162118	164209	193569	grade 0 events	41786	40722	43268	42944	41661	21081
rejected events	76423	77268	78800	83416	83377	75114		27%	26%	27%	26%	25%	10%
rejected %	49%	49%	50%	51%	50%	38%	grade 1 events	304	310	351	368	295	189
								0%	0%	0%	0%	0%	0%
							grade 2 events	14163	15432	13249	13520	15101	26062
								9%	9%	8%	8%	9%	13%
							grade 3 events	5264	5122	5385	5396	5110	10660
								3%	3%	3%	3%	3%	5%
							grade 4 events	5111	5140	5319	5440	5255	10433
								3%	3%	3%	3%	3%	5%
							grade 5 events	4258	4297	3947	4556	4494	11492
								2%	2%	2%	2%	2%	5%
							grade 6 events	12025	12488	11603	11430	13734	50258
								7%	7%	7%	7%	8%	25%
							grade 7 events	71834	72623	74476	78464	78559	63394
								46%	46%	47%	48%	47%	32%

2.2 Compared Parameters

Parameter	Planned	Actual	Parameter	Planned	Actual
Instrument	ACIS	ACIS	Obspar format version number	7	7
Detector	ACIS-012367	ACIS-012367	Obspar file type	PREDICTED	ACTUAL
Grating	NONE	NONE	Obspar update status	NONE	UPDATED
Data mode	FAINT	FAINT	Number of optional ACIS chips dropped	0	0
Observation mode	SECONDARY	SECONDARY	On-chip summing requested	N	N
[deg] Pointing RA	0	247.4875343467492	Subarray requested	NONE	NONE
[deg] Pointing Dec	0	-2.02583217561843	Alternating exposures requested	N	N
[deg] Pointing Roll	0.0	211.3099549782648	[s] Primary exposure time	3.2	3.2
[mm] SIM focus pos	-1.429586	-0.7809083437167272			
[mm] SIM defocus	0.1037507710433287	0.7524282956875696			
[mm] SIM translation stage pos	250.455976	250.4635187648994			
[mm] SIM translation stage offset	0	-0.007540371344731511			
[s] Observation start time (MET)	361239599.572505	361239598.5475			
Observation start date	2009-06-13T00:20:00	2009-06-13T00:19:58			
[s] Observation end time (MET)	361252959.423173	361252958.39817			
Observation end date	2009-06-13T04:02:39	2009-06-13T04:02:38			
Read mode	TIMED	TIMED			

2.3 Star Slots

2.4 FID Slots

A Summary

A.1 Status

V&V Scientist	Beth Sundheim
V&V Date (YYYY-MM-DD)	2012.06.12
V&V Edition	1
V&V Disposition and Status	OK
V&V Charge Time	8.4472445709109

A.2 Comments